



**206 HP**



**89,300 lbs.**



**Material Handling Machine D-Series**

# **830 R-HD**



Ideal maintenance access.

**SENNEBOGEN Hydroclean** – This system, using a 2 micron filter, keeps the hydraulic circuit free from water and contamination. This extends the life of the hydraulic components and reduces machine maintenance and operating costs.

Cooling system with water radiator, turbo intercooler and hydraulic oil cooler side by side.

## Innovative Material Handling



Hydraulic driven fan with flow optimized fan blades, reversible to keep the coolers free of debris.





Easy and safe access to the uppercarriage.



Uppercarriage designed specifically for heavy lifting with continuous bearing plates from boom to counterweight.



Excellent access to the batteries.





Access from the ground to hydraulic components, air filter, diesel tank, central lubrication, electric panel and battery disconnect switch.

## Innovative Material Handling



Hydraulic valves mounted all together for easy maintenance.  
Test ports in a centralized location for easy trouble shooting of the hydraulic system.





Fuses and relays are positioned together for ease of maintenance. The battery disconnect switch and main fuses are easily accessible from the ground level.

Visibility is improved with the standard hydraulic elevating cab.

Sliding cab door – the ideal access, safe and comfortable.

Two hydraulic lifting cylinders enhance cab stability and safety.



Redesigned cab including a catwalk and fixed handrails, has enhanced cab access and cab safety.



Cooling efficiency is improved using wider fin spacing and coarse particle separation placed in front of radiator and coolers.





Hydraulic elevating cab with tinted safety glass.

Sliding cab door makes access to the cab very safe and comfortable.



Larger cab with improved visibility and comfort.

Adjustable air vents.



Tiltable steering column, air suspended seat with lumbar support, fully adjustable to the joysticks as well as to the foot controls, seat heater.

## Safety and Comfort first



Standard catwalk with fixed railings guarantees safe access to the cab.

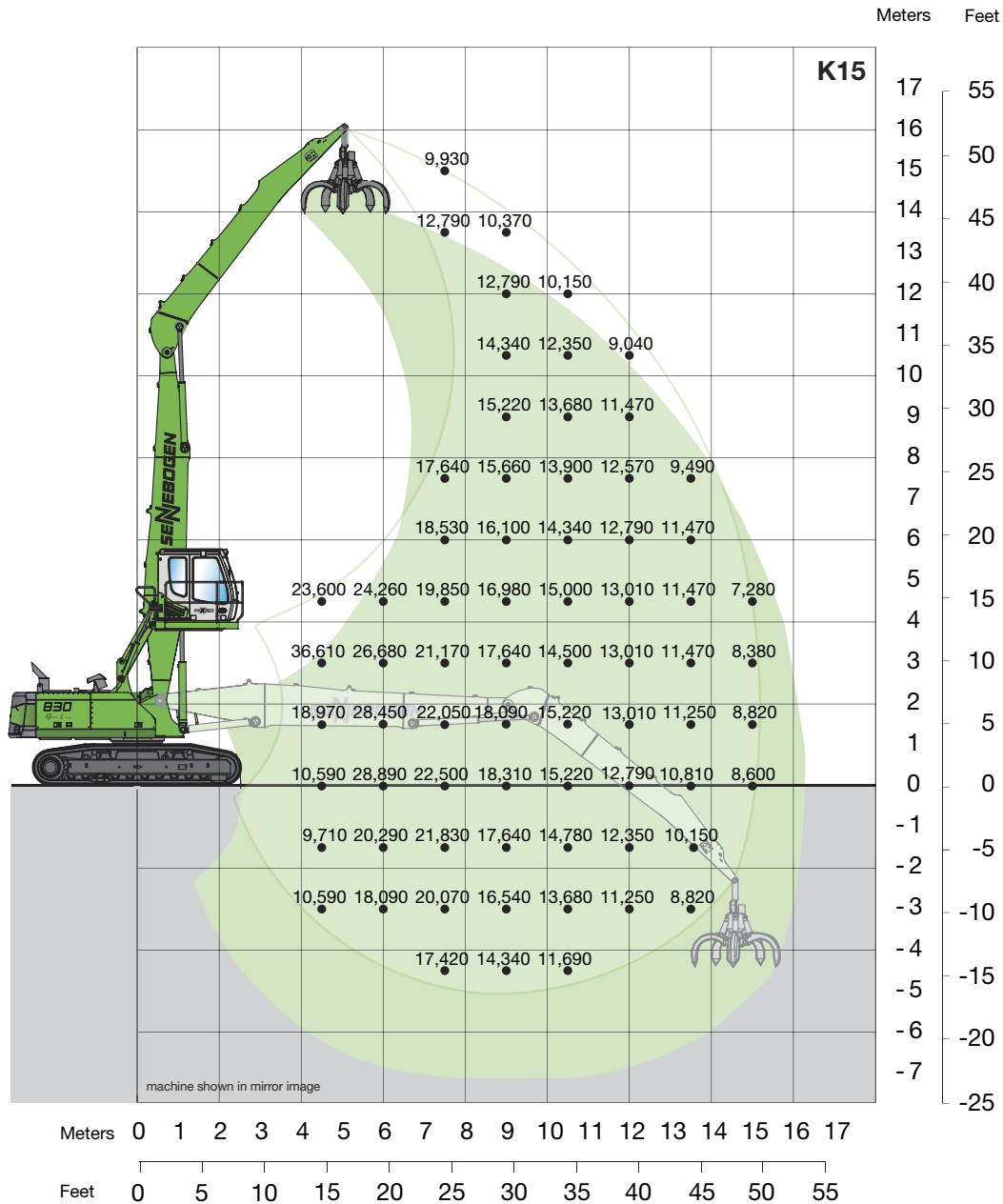


Fully automatic climate control – heating and air conditioning with temperature presetting, fresh / recirculated air flow modes, air filter and 8 adjustable air vents.



**SENNEBOGEN** diagnostic system – automatic monitoring, warning and storage of all essential operating conditions.





### Working Equipment

K15 50'3" reach  
boom 27'11"  
stick 23'

### Operator's Cab

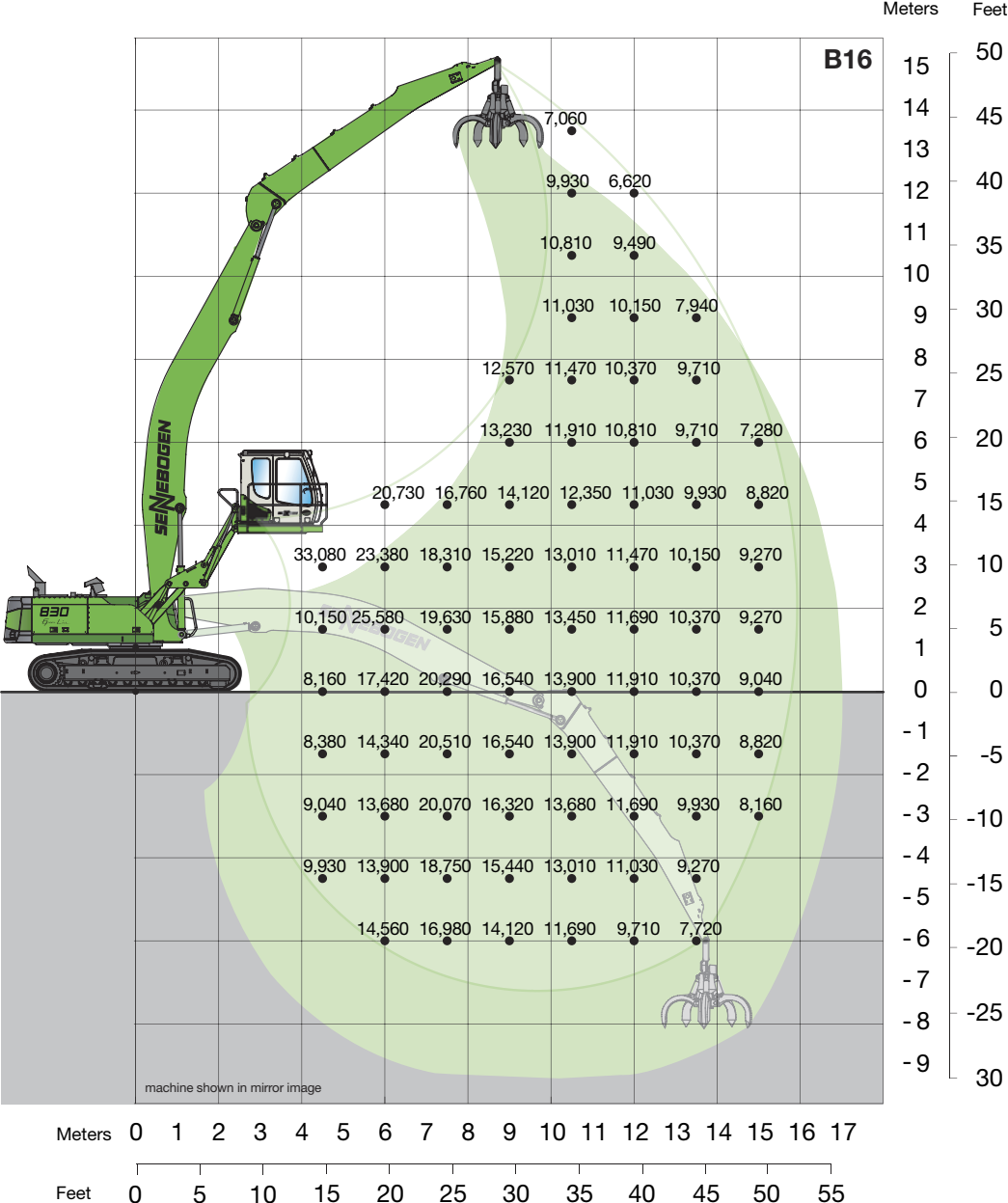
D270 maXCab  
hydraulic elevating  
eye level 17'6"

### Undercarriage

R20/370-280L with mechanically  
extendable tracks  
triple grouser track shoes 2'3" (canted)

Lift capacities are stated in pounds. Indicated loads are based on ISO 10567 and do not exceed 75% of tipping and 87% of hydraulic capacity. Machine on firm, level supporting surface. Loads valid for 360° with machine supported on outriggers. Lifting capacities do not include working attachments such as scrap grapples, magnets, etc. Their weights must be deducted from the numbers indicated in the lifting charts.

# 830 R-HD



## Working Equipment

B16 52'6" reach  
boom 29'6"  
stick 23'

## Operator's Cab

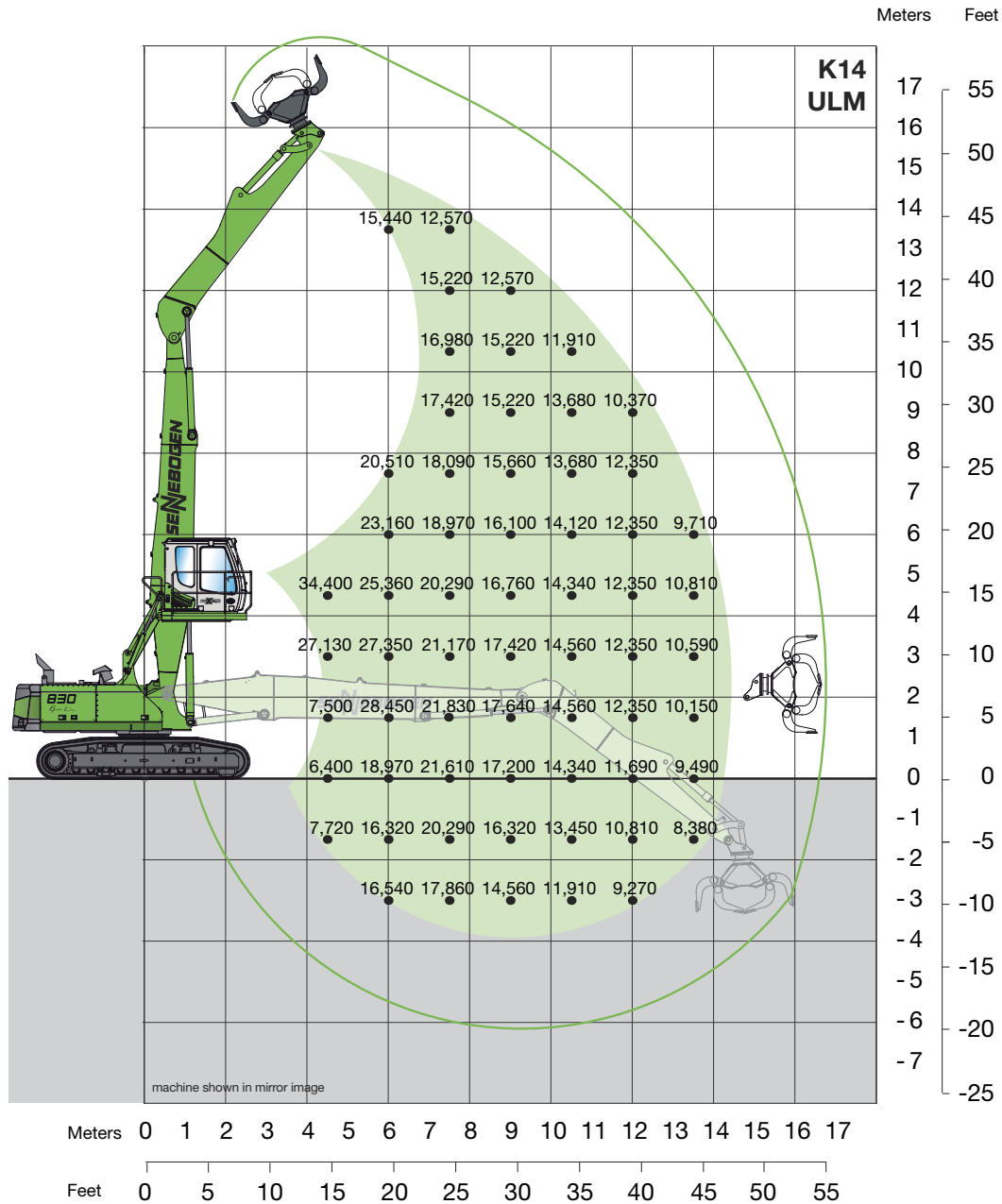
D 300/260 maXCab (optional)  
hydraulic elevating / forward moving  
eye level 18'8"

## Undercarriage

R20/370-280L with mechanically  
extendable tracks  
triple grauser track shoes 2'3" (canted)

Lift capacities are stated in pounds. Indicated loads are based on ISO 10567 and do not exceed 75% of tipping and 87% of hydraulic capacity. Machine on firm, level supporting surface. Loads valid for 360° with machine supported on outriggers. Lifting capacities do not include working attachments such as scrap grapples, magnets, etc. Their weights must be deducted from the numbers indicated in the lifting charts.





### Working Equipment

K14 ULM      47'7" reach  
boom      27'11"  
straight stick      19'8" with reversing  
                                 mechanism

### Operator's Cab

D270 maXCab  
hydraulic elevating  
eye level 17'6"

### Undercarriage

R20/370-280L with mechanically  
extendable tracks  
triple grauser track shoes 2'3" (canted)

Lift capacities are stated in pounds. Indicated loads are based on ISO 10567 and do not exceed 75% of tipping and 87% of hydraulic capacity. Machine on firm, level supporting surface. Loads valid for 360° with machine supported on outriggers. Lifting capacities do not include working attachments such as scrap grapples, magnets, etc. Their weights must be deducted from the numbers indicated in the lifting charts.

## Technical Specifications

### Engine

Model:	Cummins QSB6.7
Type:	6 cylinder, inline
Cooling:	Water cooled
Rating (ISO 9249):	206 HP (151 kW) at 2,000 rpm
Fuel Tank:	130 gal
Air Filter:	Dual stage with prefilter

### Electrical System

Operating Voltage:	24 V
Batteries:	2 x 12 V, 110 Ah
Light Package:	2 x uppercarriage 2 x cab (front)

<b>Optional:</b>	
Light Package	2 x boom 2 x stick

### Hydraulic System

Flow Rate:	140 gpm
Working Pressure:	4930 psi
Hydraulic Tank:	82 gal
Oil Filtration:	full flow return filters plus 2 micron <b>SENNEBOGEN</b> Hydroclean

### Swing System

Drive:	Axial piston motor, planetary gear, multidisc brake
Swing Speed:	0-8 rpm
Swing Bearing:	Sealed ball bearing with internal teeth

### Undercarriage

System:	Mechanically extendable wide gauge undercarriage
Drive:	Independent driven by an axial piston motor through a compact-planetary motor through a compact-planetary
Steering:	Foot pedals / levers
Travel Speed:	0 – 2.1 mph
Crawler:	B60 maintenance free crawler
Tracks:	2'3" (27.6") triple grouser track shoes (canted)
Safety:	Travel alarm

<b>Optional:</b>	
System:	hydraulic extendable
Tracks:	2'7 triple grouser track shoes (canted) 3' triple grouser track shoes (canted)

### Operator's Cab

Model:	maXCab with sliding door
Interior:	Fully automatic climate control Air suspended seat, heated with lumbar support, adjustable arm rests Adjustable steering wheel AM/FM radio with CD player SDS diagnostic system Safety lever for all controls Interior lightning Parallel windshield wiper and washer Sunshade for windshield and skylight

<b>Optional:</b>	
Exterior:	FOPS protection guard Windshield guard Bullet proof glass

### Cab System

Standard:	D270 maXCab Hydraulic elevating with two cylinders Eye level 17'6"
<b>Optional:</b>	D300/260 maXCab hydraulic elevating and forward moving Eye level 18'8" D150 maXCab Fix cab riser 5' Eye level 14'7"

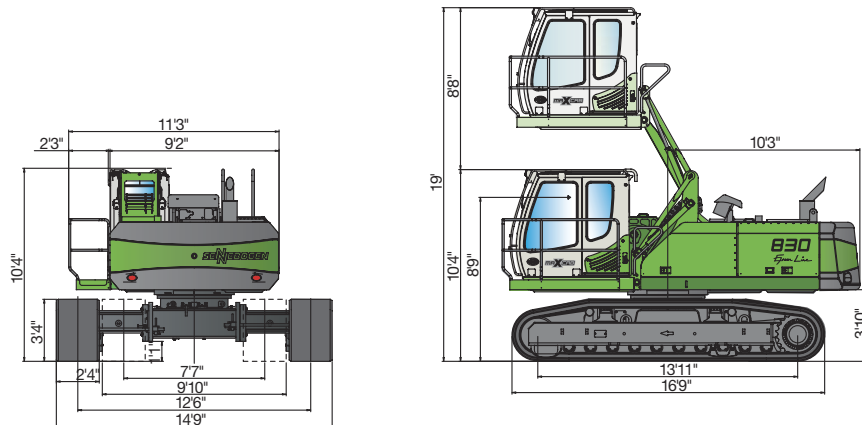
### Magnet System

Drive:	Belt driven
Rating:	20 kW
Controller:	Hubbell
Generator:	Baldor

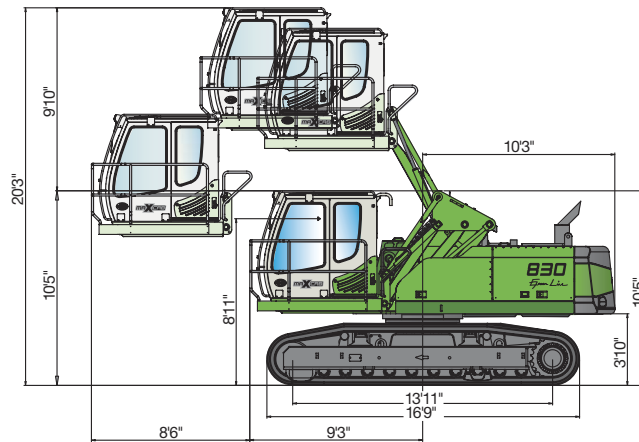
### Attachments

- 0.75, 1.0 and 1.25 cu. yds. scrap grapple with rotation, 4 or 5 tine, open, semi-closed or closed, depending on the weight of the grapple and operating reach
- 0.75 to 2.0 cu. yds. clamshell grapple with rotation, depending on the material density, weight of the grapple and operating reach
- Log grapple available in different sizes and configurations depending on material being handled
- Contact **SENNEBOGEN** for approval of the attachment before operating the machine
- Always refer to the lifting capacities on the chart before installing any attachment

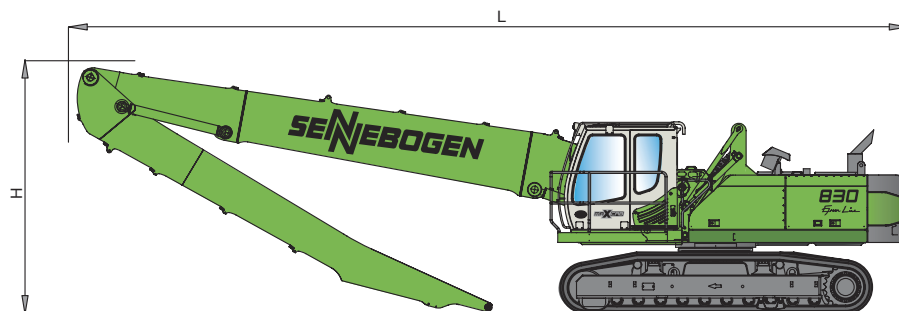
## Machine Dimensions



Cab D270



Cab D300/260



	Boom	Stick	Transport length (L)	Transport height (H)
K15	27'11"	23'	41'	12'8"
B16	30'10"	23'	44'	11'6"
K14 ULM	27'11"	19'8"	41'	12'8"



# 830 R-HD

*make your competition ...*

***“Green With Envy”***



Under our policy of continuous improvement, we reserve the right to change specifications and design without prior notice. The illustrations shown may include optional equipment.

## **SENNEBOGEN LLC**

2835 Jeff Adams Drive  
Charlotte, NC 28206

Phone: +1 (704) 347-4910  
Fax: +1 (704) 347-8894  
E-Mail: [sales@sennebogenllc.com](mailto:sales@sennebogenllc.com)

[www.sennebogen-na.com](http://www.sennebogen-na.com)

