

preliminary

SENEBOGEN[®]
Leading Through Innovation



206 HP



90,000 lbs.



Material Handling Machine **D-Series**

830 M-T

Technical Specifications

Engine

Model:	Cummins QSB6.7
Type:	6 cylinder, inline
Cooling:	Water cooled
Rating (ISO 9249):	206 HP (151 kW) at 2,000 rpm
Fuel Tank:	130 gal
Air Filter:	Dual stage with prefilter

Electrical System

Operating Voltage:	24 V
Batteries:	2 x 12 V, 110 Ah
Light Package:	2 x uppercarriage 2 x cab (front)

Optional:

Light Package	2 x boom 2 x stick
---------------	-----------------------

Hydraulic System

Flow Rate:	140 gpm
Working Pressure:	4930 psi
Hydraulic Tank:	82 gal
Oil Filtration:	full flow return filters plus 2 micron SENNEBOGEN Hydroclean

Swing System

Drive:	Axial piston motor, planetary gear, multidisc brake
Swing Speed:	0-8 rpm
Swing Bearing:	Sealed ball bearing with external teeth

Undercarriage

Drive:	Variable displacement hydraulic motor, dual stage power shift transmission, all wheel drive
Steering:	Steering wheel
Travel Speed:	0 - 15 mph
Axles:	Front axle: oscillating with hydraulic lock Rear axle: fixed
Brakes:	Multidisc in both axles
Tires:	4 x 650 / 65R25 pneumatic
Safety:	Travel alarm

Optional:

Steering:	Joy stick & steering wheel
-----------	----------------------------

Operator's Cab

Model:	maXCab with sliding door
Interior:	Fully automatic climate control Air suspended seat, heated with lumbar support, adjustable arm rests Adjustable steering wheel AM/FM radio with CD player SDS diagnostic system Safety lever for all controls Interior lightning Parallel windshield wiper and washer Sunshade for windshield and skylight

Optional:

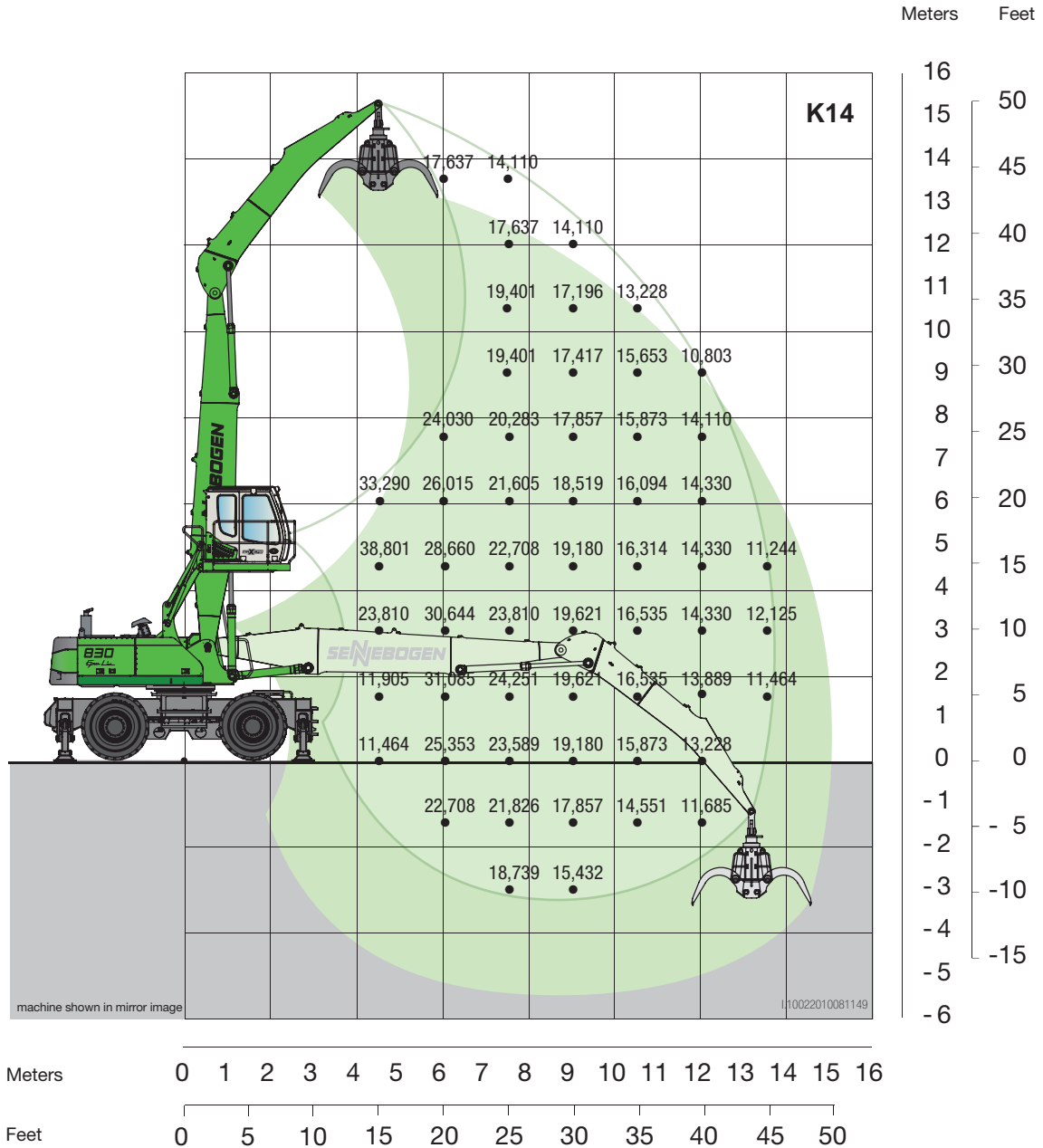
Exterior:	FOPS protection guard Windshield guard Bullet proof glass
-----------	---

Cab System

Standard:	D270 maXCab Hydraulic elevating with two cylinders Eye level 20'
-----------	--

Optional:

D150 maXCab Fix cab riser 5' Eye level 16'
--



Working Equipment

K14 45' reach
boom 26'9"
stick 19'

Operator's Cab

D270 maXCab
hydraulic elevating
eye level 20'

Undercarriage

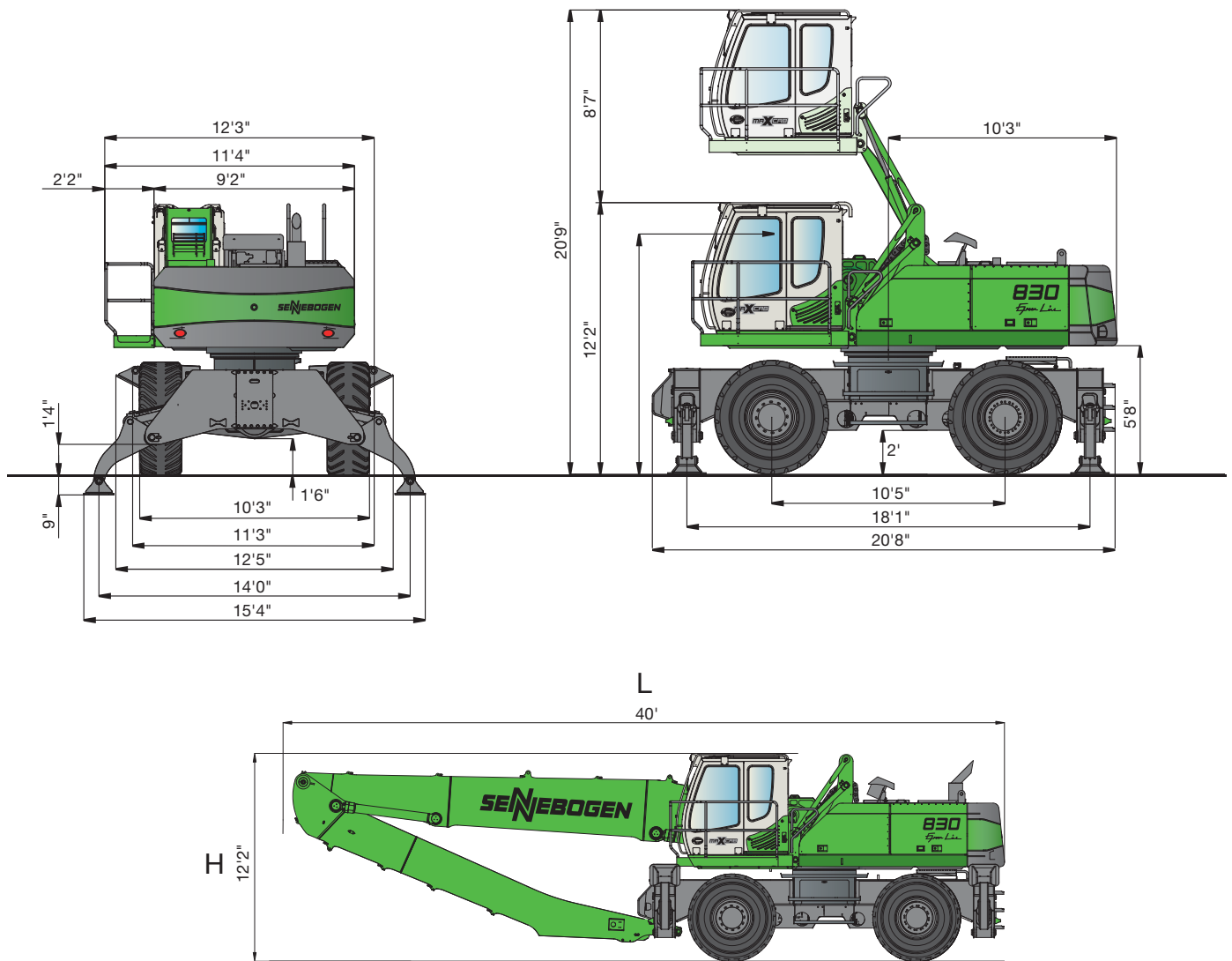
MP38D with 4-point outriggers
Tires 4 x 650/65R25 pneumatic

Lift capacities are stated in pounds. Indicated loads are based on ISO 10567 and do not exceed 75% of tipping and 87% of hydraulic capacity. Machine on firm, level supporting surface. Loads valid for 360° with machine supported on outriggers. Lifting capacities do not include working attachments such as scrap grapples, magnets, etc. Their weights must be deducted from the numbers indicated in the lifting charts.

830_{M-T}

make your competition ...

“Green With Envy”



SENNEBOGEN LLC

1957 Sennebogen Trail
Stanley, NC 28164

Phone: +1 (704) 347-4910

Fax: +1 (704) 347-8894

E-Mail: sales@sennebogenllc.com

www.sennebogen-na.com