

DEUTZ Serial Number Cross-Reference Guide

Use the bookmarks for fast navigation
Tech Library <http://engine.od.ua>



Serial Number cross-reference guide

Contents

Air-Cooled engines **Page 2 - 13**

Family 909	Page 2
Family 910.....	Page 3
Family 411/511	Page 4
Family F2L912.....	Page 5
Family 912/913.....	Page 6 - 8
Family 914.....	Page 9 - 11
Family 413 F/W	Page 12
Family 513	Page 13

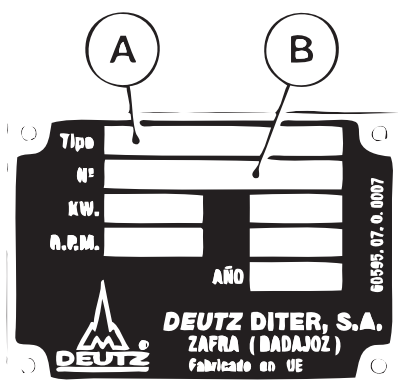
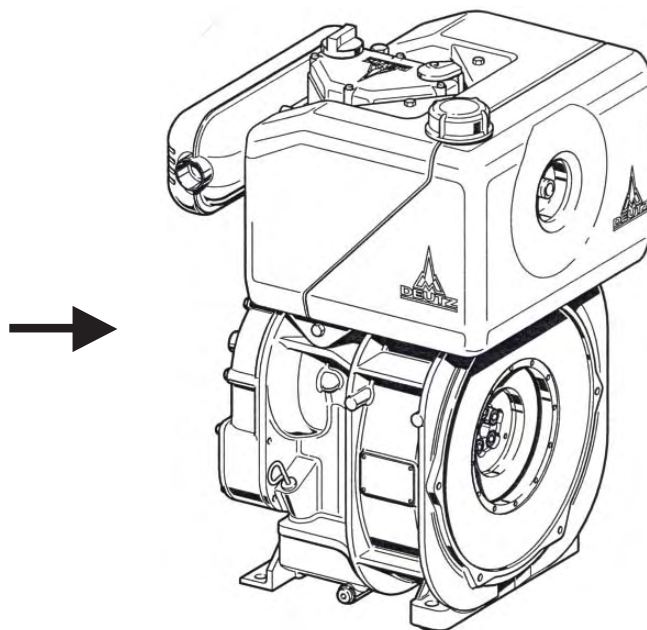
Liquid-Cooled engines **Page 14 - 26**

Family 1008/1008 F	Page 14
Family 2008/2009	Page 15
Family 1011/1011 F.....	Page 16 - 17
Family 2011.....	Page 18- 20
Family 1012/1013.....	Page 21 - 22
Family 2012/2013.....	Page 23 - 24
Family 1015	Page 25
Family 2015.....	Page 26

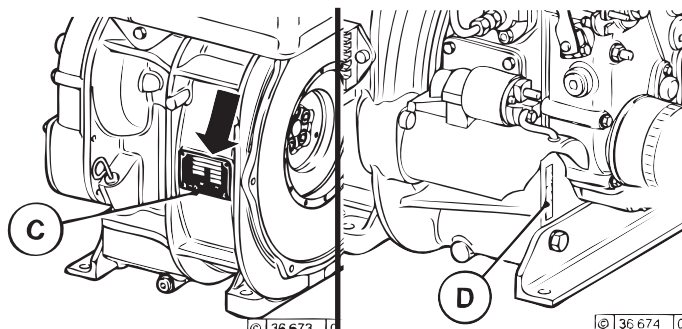
Family 909

Engine D909L01

- D** ▶ Diesel engine
- 909** ▶ Engine family
- L** ▶ Cylinders in In-line configuration
- 01** ▶ Number of cylinders



The model type A and the engine serial No. B are given in the engine identification plate.

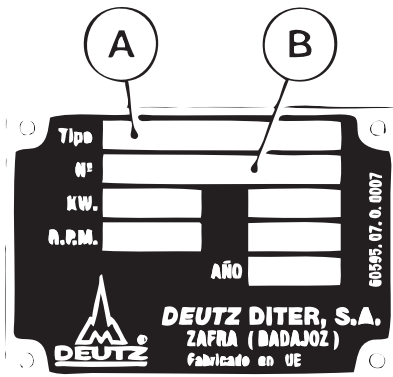
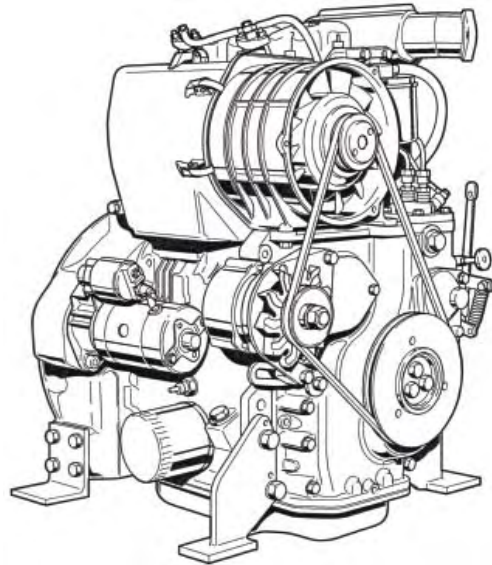


The engine identification plate C is located on the crankcase. The serial No. D is also stamped on the engine block.

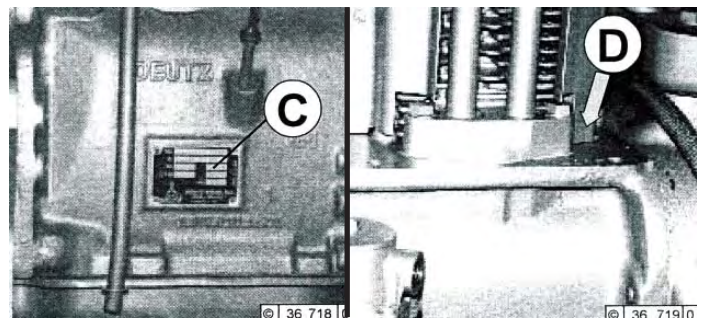
Family 910

Engine D910L02

- D** ▶ Diesel engine
- 910** ▶ Engine family
- L** ▶ Cylinders in In-line configuration
- 02** ▶ Number of cylinders



The model type A and the engine serial No. B are given in the engine identification plate.

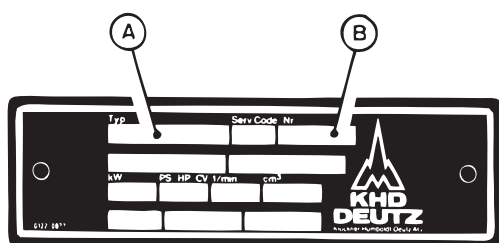
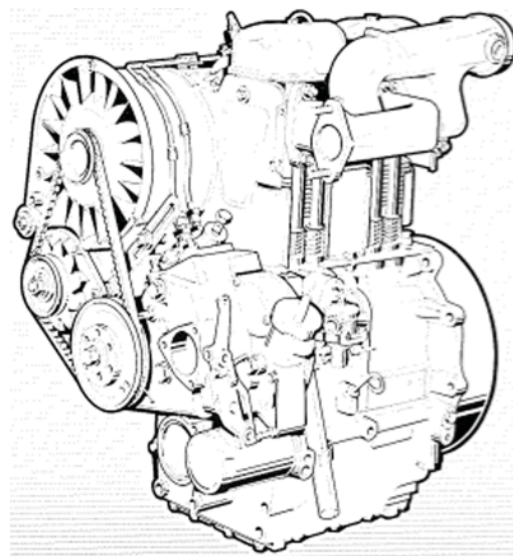


The engine identification plate C is located on the crankcase. The serial No. D is also stamped on the engine block.

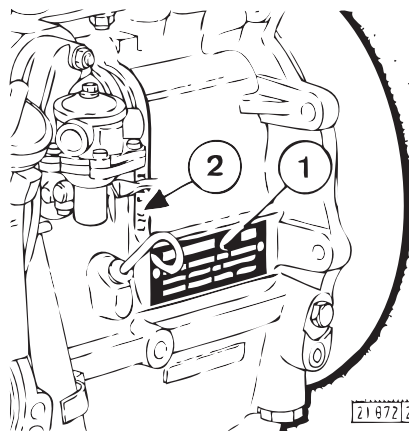
Family 411/511

Engine F2L511W

- F** ▶ Highspeed, compact engine
- 2** ▶ Number of cylinders
- L** ▶ Air-Cooled
- 511** ▶ Engine family
- W** ▶ Indirect injected for underground operation



The model type A and the engine serial No. B are given in the engine identification plate.

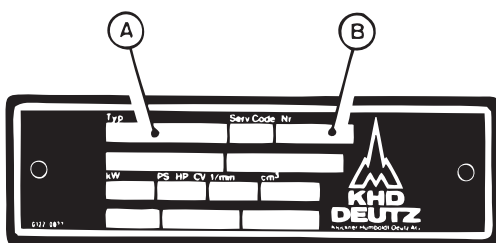
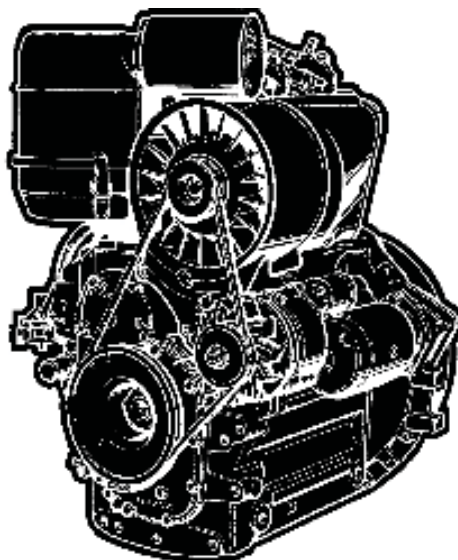


The engine identification plate 1 is mounted to the crankcase.
The serial No. 2 is also stamped into the crankcase.

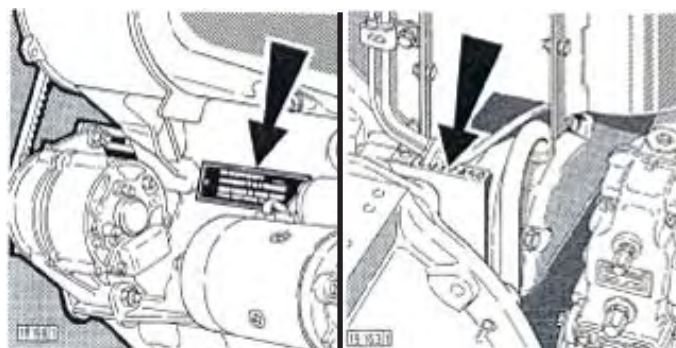
Family F2L912

Engine F2L912W

F	▶	High speed, compact engine
2	▶	Number of cylinders
L	▶	Air-Cooled
912	▶	Engine family
W	▶	Indirect injected for underground operation



The model type A and the engine serial No. B are given in the engine identification plate.



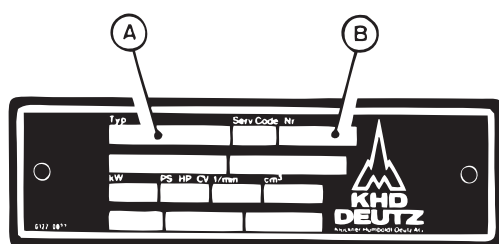
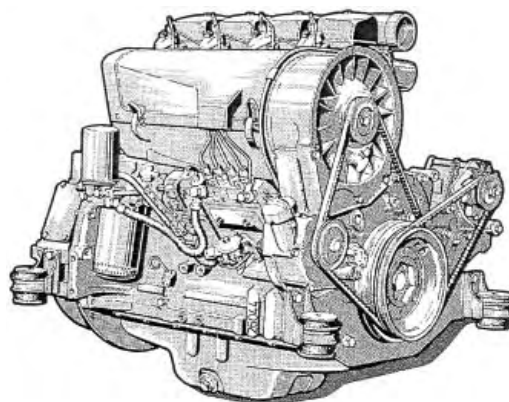
The engine identification plate is mounted to the crankcase.

The serial No. is also stamped into the crankcase.

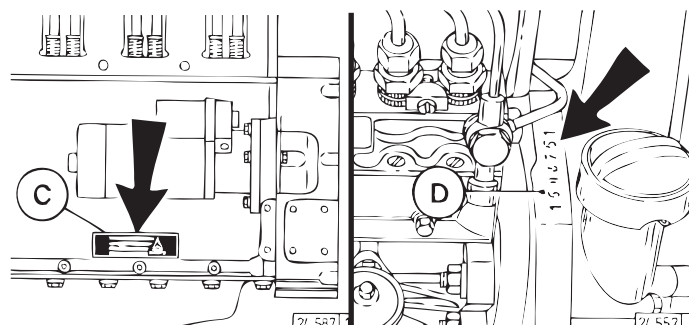
Family 912/913

Engine F6L912W

- F** ▶ High speed, compact engine
- 6** ▶ Number of cylinders
- L** ▶ Air-Cooled
- 912** ▶ Engine family
- W** ▶ Indirect injected for underground operation



The model type A and the engine serial No. B are given in the engine identification plate.

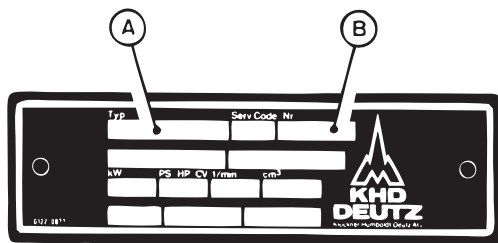
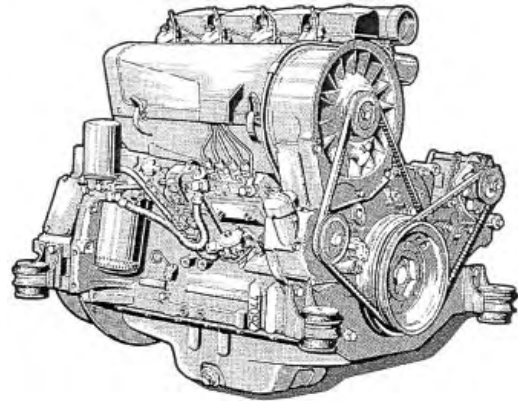


The engine identification plate C is mounted to the crankcase.

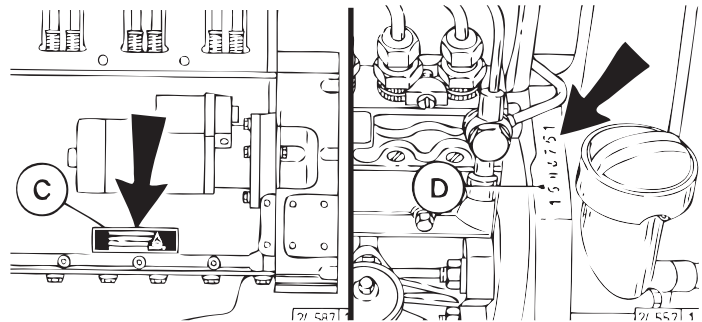
The serial No. D is also stamped into the crankcase.

Family 912/913 Engine BF6L913C

- B** ▶ Turbo
- F** ▶ Highspeed, compact engine
- 6** ▶ Number of cylinders
- L** ▶ Air-Cooled
- 913** ▶ Engine family
- C** ▶ Charge Air Cooled



The model type A and the engine serial No. B are given in the engine identification plate.

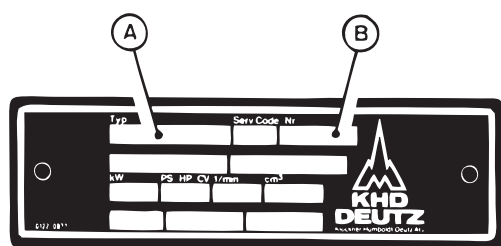
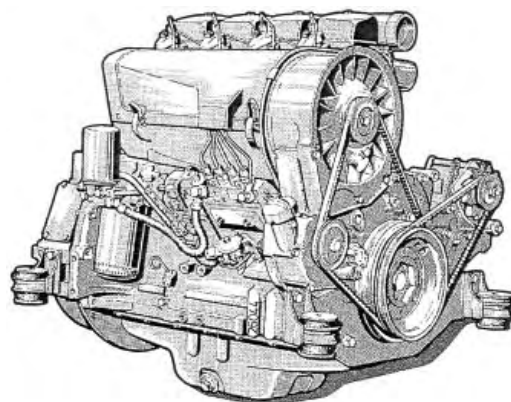


The engine identification plate C is mounted to the crankcase.

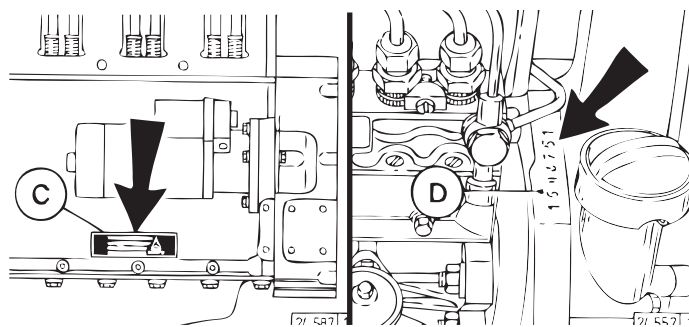
The serial No. D is also stamped into the crankcase.

Family 912/913 Engine GBF6L913C

- G** ▶ Gas engine
- B** ▶ Turbo
- F** ▶ High speed, compact engine
- 6** ▶ **Number of cylinders**
- L** ▶ **Air-Cooled**
- 913** ▶ Engine family
- C** ▶ Charge Air Cooled



The model type A and the engine serial No. B are given in the engine identification plate.

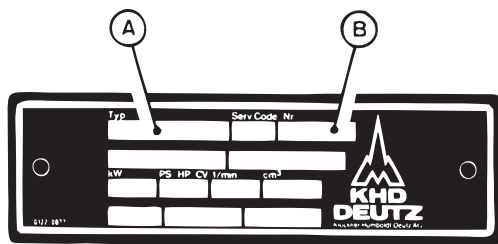
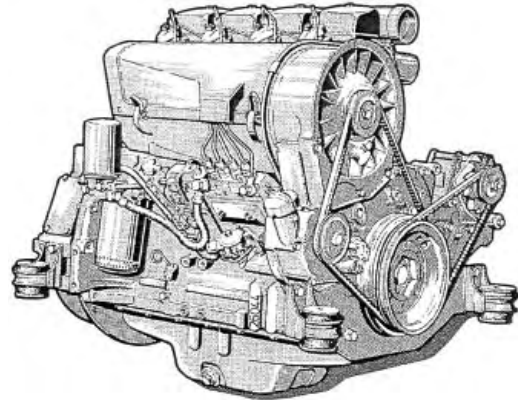


The engine identification plate C is mounted to the crankcase.
The serial No. D is also stamped into the crankcase.

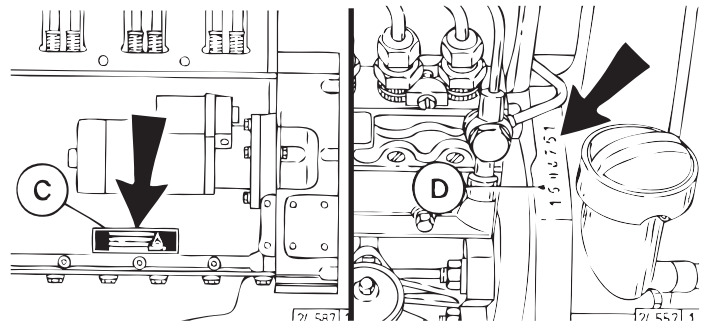
Family 914

Engine BF4L914

- B** ▶ Turbo
- F** ▶ Highspeed, compact engine
- 4** ▶ **Number of cylinders** →
- L** ▶ Air-Cooled
- 914** ▶ Engine family



The model type A and the engine serial No. B are given in the engine identification plate.



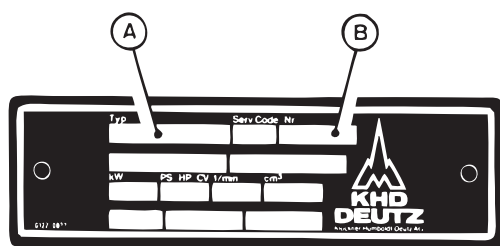
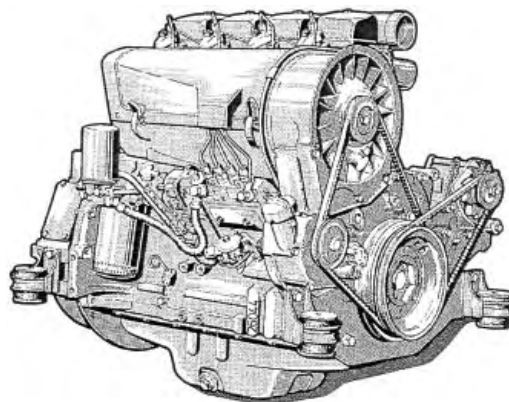
The engine identification plate C is mounted to the crankcase.

The serial No. D is also stamped into the crankcase.

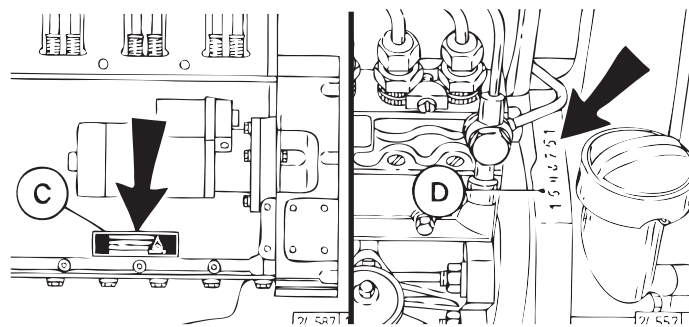
Family 914

Engine TCD914L06

- T** ▶ Turbo
- C** ▶ Charge Air Cooled
- D** ▶ Diesel engine
- 914** ▶ Engine family
- L** ▶ Cylinders in In-line configuration
- 06** ▶ Number of cylinders



The model type A and the engine serial No. B are given in the engine identification plate.

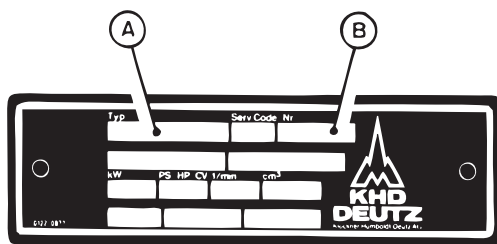
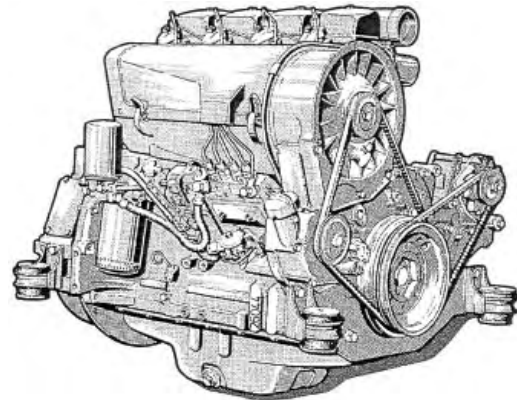


The engine identification plate C is mounted to the crankcase.
The serial No. D is also stamped into the crankcase.

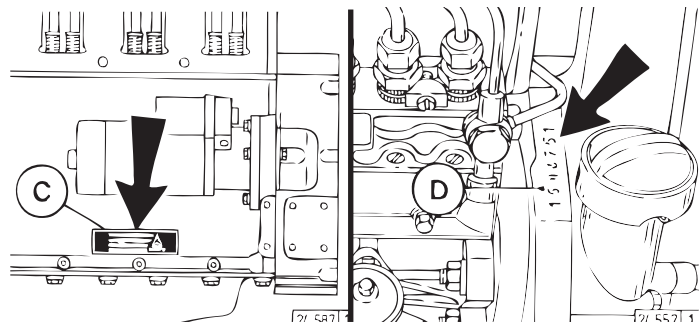
Family 914

Engine TCG914L06

- T** ▶ Turbo
- C** ▶ Charge Air Cooled
- G** ▶ Gas
- 914** ▶ Engine family
- L** ▶ Cylinder in In-line configuration
- 06** ▶ Number of cylinders



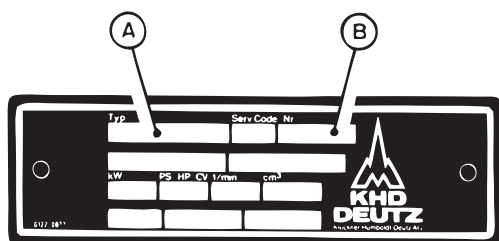
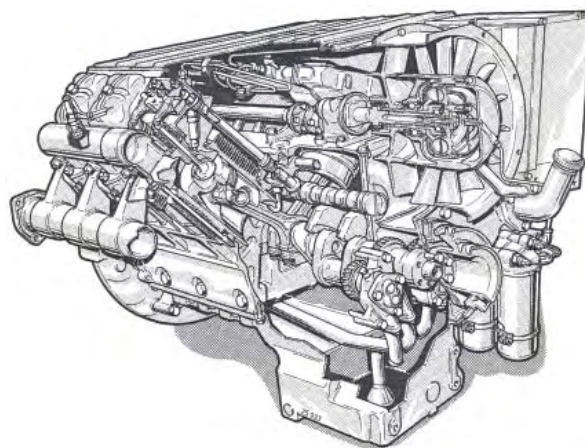
The model type A and the engine serial No. B are given in the engine identification plate.



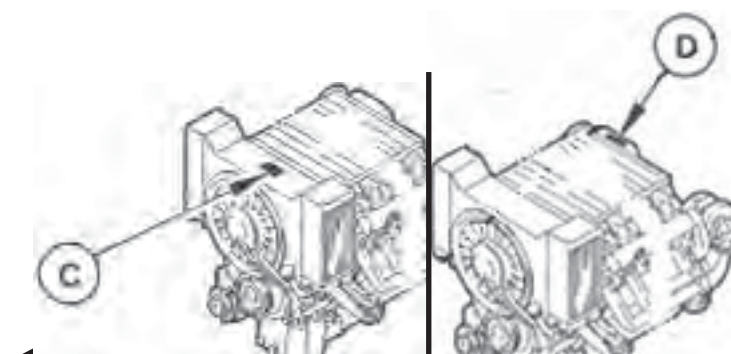
The engine identification plate C is mounted to the crankcase.
The serial No. D is also stamped into the crankcase.

Family 413 F/W Engine F6L413FRW

- F** ▶ Highspeed, compact engine
- 6** ▶ Number of cylinders
- L** ▶ Air-Cooled
- 413** ▶ Engine family
- F** ▶ Further developed
- R** ▶ Cylinders in In-line configuration
- W** ▶ Indirect injected for underground operation



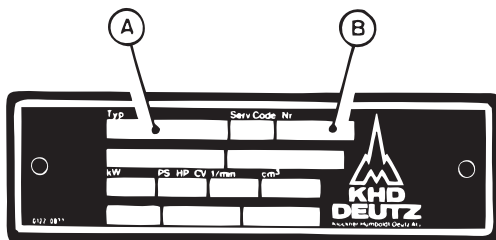
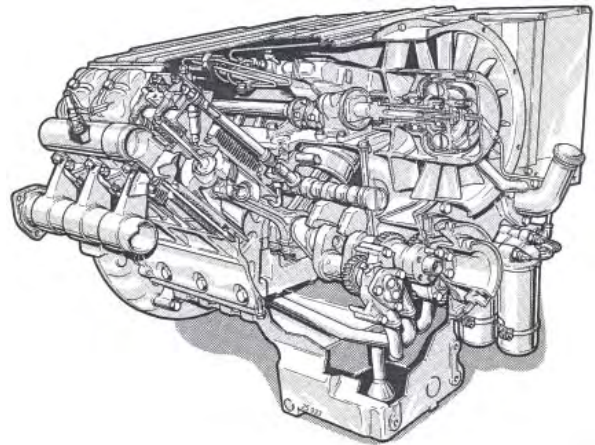
The model type A and the engine serial No. B are given in the engine identification plate.



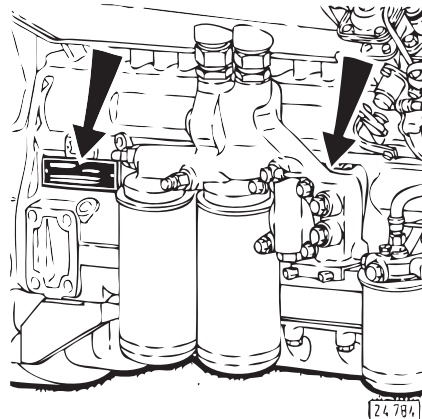
The engine identification plate C is affixed to the oil cooler cover. The engine serial number D is stamped on the gear cover.

Family 513 Engine BF6L513RCP

- B** ▶ Turbo
- F** ▶ High speed, compact engine
- 6** ▶ Number of cylinders
- L** ▶ Air-Cooled
- 513** ▶ Engine family
- R** ▶ In-line configurator
- C** ▶ Charge Air-Cooled
- P** ▶ High output version



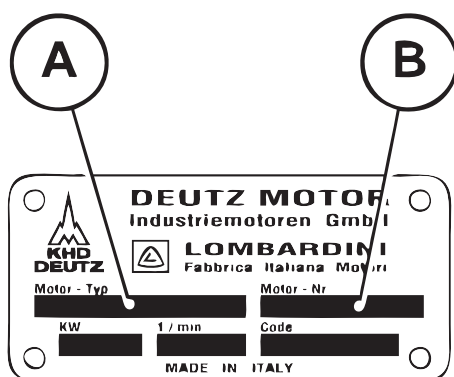
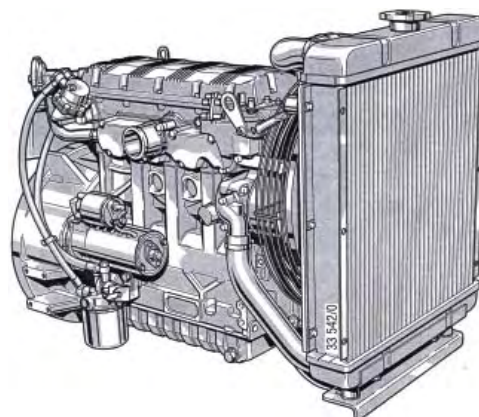
The model type A and the engine serial No. B are given in the engine identification plate.



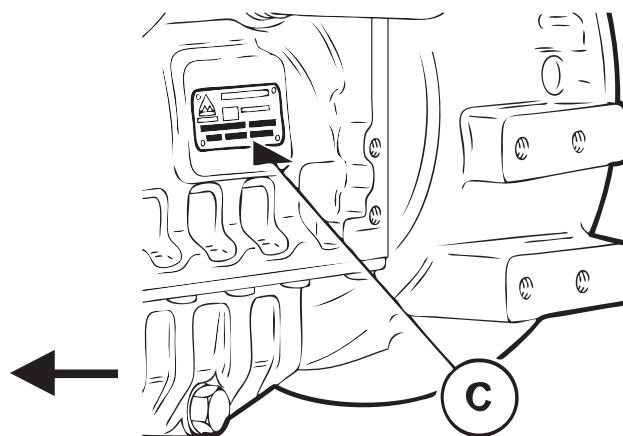
The engine identification plate is mounted to the crankcase at left of the lube filters and in the air cowling. The serial No. is also stamped into the crankcase at the flange for mounting the oil filters.

Family 1008/1008F Engine BF4M1008F

- B** ▶ Turbo
- F** ▶ Highspeed, compact engine
- 4** ▶ **Number of cylinders**
- M** ▶ **Liquid-Cooled**
- 1008** ▶ Engine family
- F** ▶ Further developed



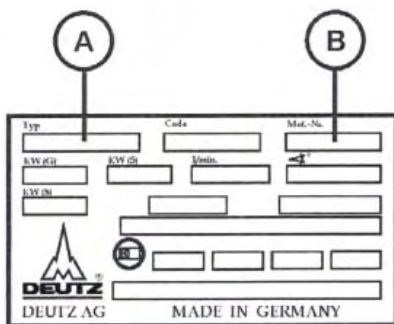
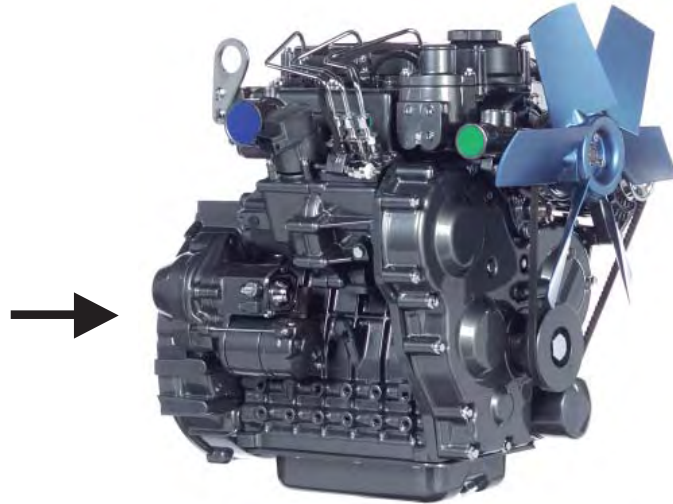
The model type A and the engine serial No. B are given in the engine identification plate.



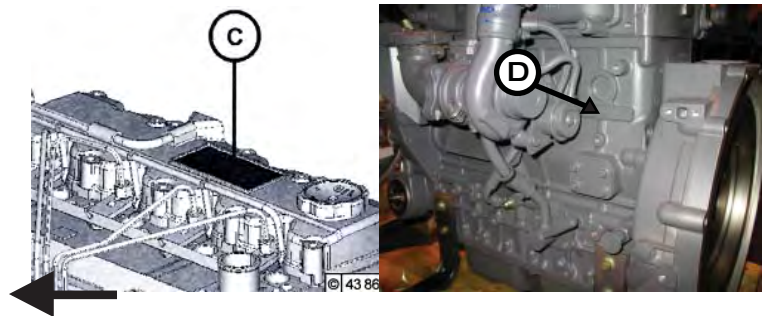
The engine identification plate C is mounted to the crankcase. The serial No. is not stamped into the crankcase.

Family 2008/2009 Engine TD2009L04

T ▶ Turbo
D ▶ Diesel engine
2009 ▶ Engine family
L ▶ Cylinders in in-line configuration
04 ▶ Number of cylinders



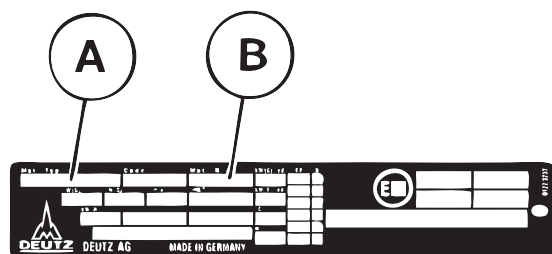
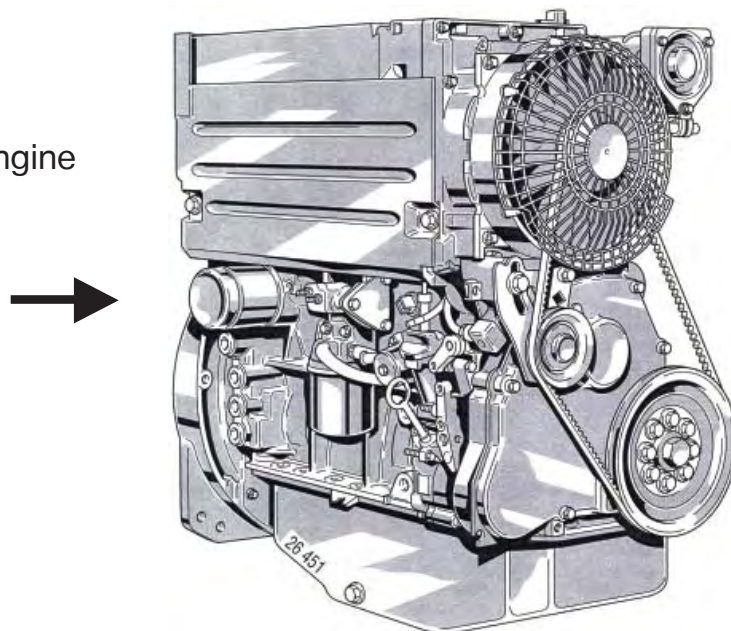
The model type A and the engine serial No. B are given in the engine identification plate.



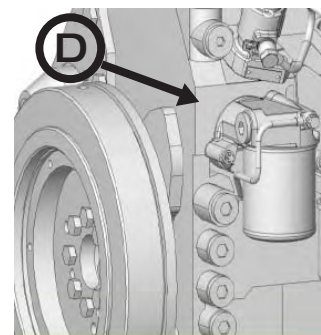
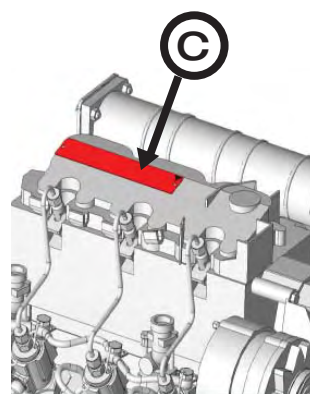
The engine identification plate C is mounted to the valve covering hood. The serial No. D is also stamped into the crankcase.

Family 1011/1011F Engine BF4L1011FT

- B** ▶ Turbo
- F** ▶ Highspeed, compact engine
- 4** ▶ **Number of cylinders**
- L** ▶ **Air-Cooled**
- 1011** ▶ Engine family
- F** ▶ Further developed
- T** ▶ Slight turbo charged



The model type A and the engine serial No. B are given in the engine identification plate.

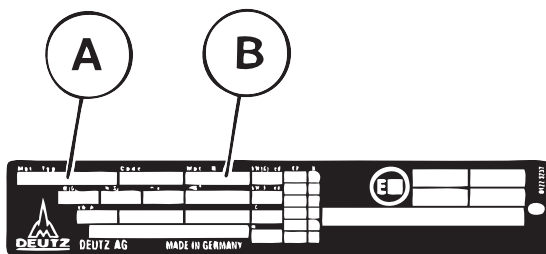


The engine identification plate C is mounted to the valve cover.
The serial No. D is also stamped into the crankcase.

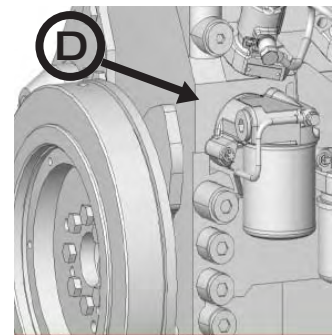
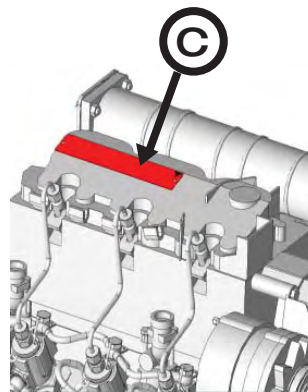
For integrated cooled engines with air discharge duct the engine identification plate is located between cooling blower housing and air duct.

Family 1011/1011F Engine BF4M1011FL

- B** ▶ Turbo
- F** ▶ Highspeed, compact engine
- 4** ▶ Number of cylinders
- M** ▶ Liquid-Cooled
- 1011** ▶ Engine family
- F** ▶ Further developed
- L** ▶ Longstroke Version



The model type A and the engine serial No. B are given in the engine identification plate.



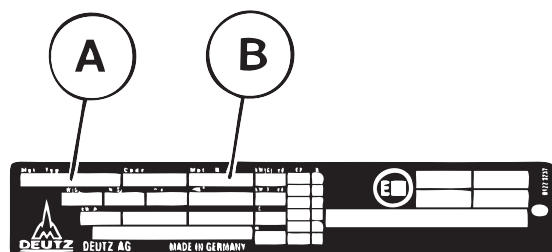
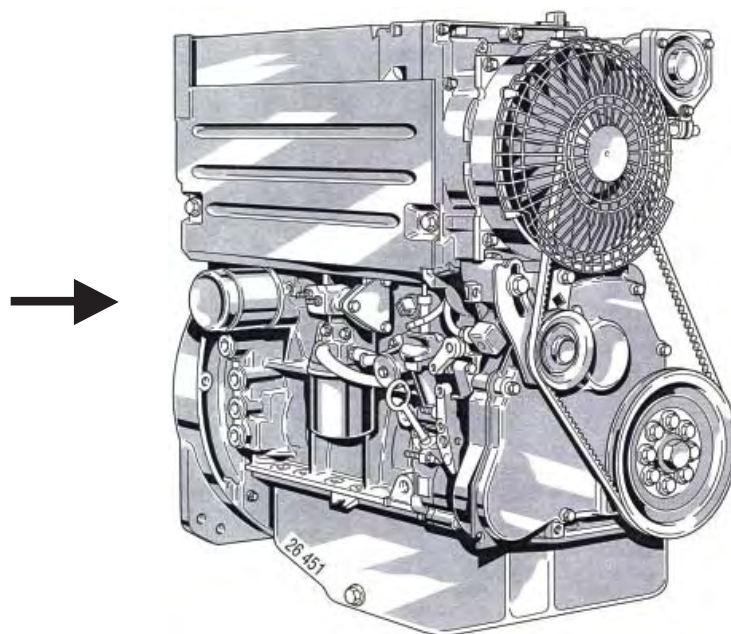
The engine identification plate C is mounted to the valve cover.

The serial No. D is also stamped into the crankcase.

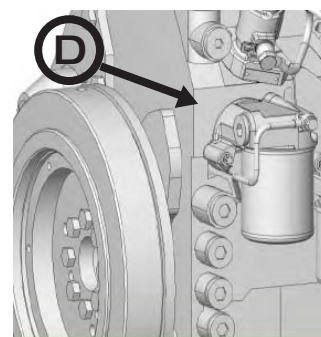
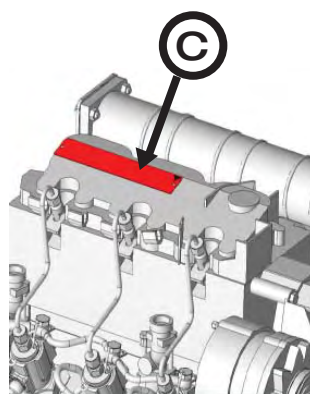
Family 2011

Engine D2011L04i

- D** ▶ Diesel engine
- 2011** ▶ Engine family
- L** ▶ Cylinders in In-line configuration
- 04** ▶ **Number of cylinders**
- i** ▶ Integrated (oil) cooled



The model type A and the engine serial No. B are given in the engine identification plate.



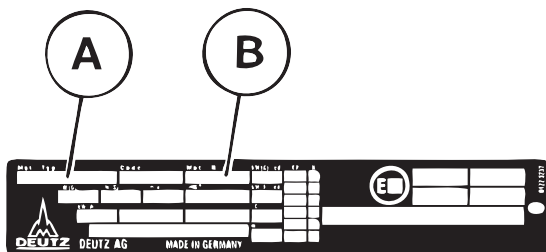
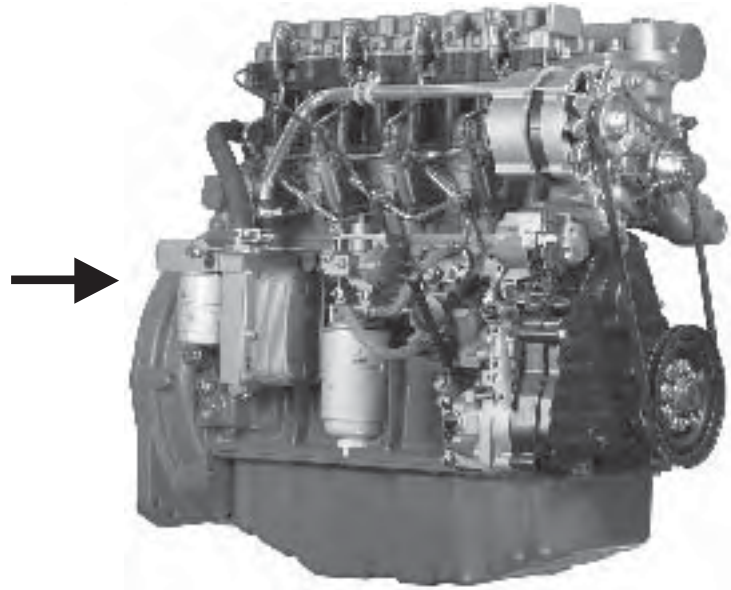
The engine identification plate C is mounted to the valve cover.
The serial No. D is also stamped into the crankcase.

For integrated cooled engines with air discharge duct the engine identification plate is located between cooling blower housing and air duct.

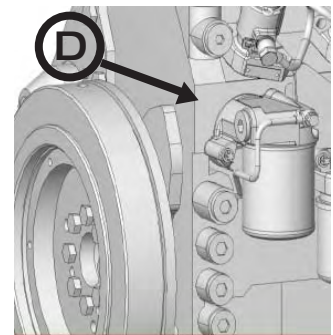
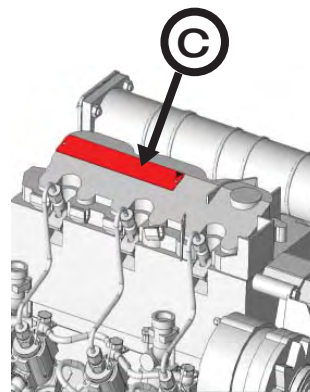
Family 2011

Engine D2011L04W

- D** ▶ Diesel engine
- 2011** ▶ Engine family
- L** ▶ Cylinders in In-line configuration
- 04** ▶ **Number of cylinders**
- W** ▶ External (water) cooled



The model type A and the engine serial No. B are given in the engine identification plate.



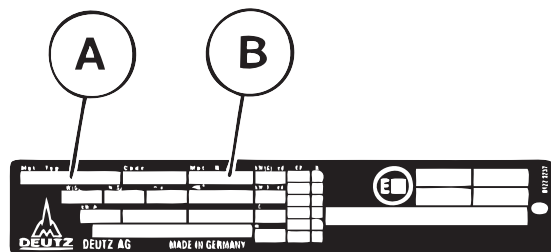
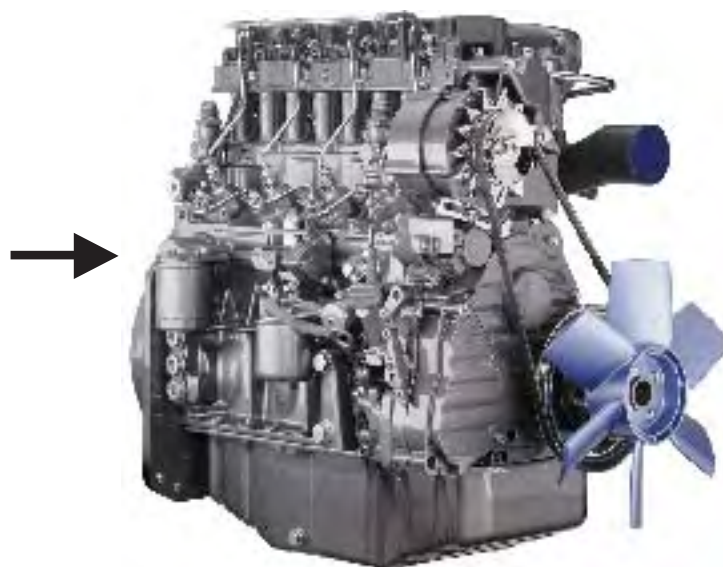
The engine identification plate C is mounted to the valve cover.

The serial No. D is also stamped into the crankcase.

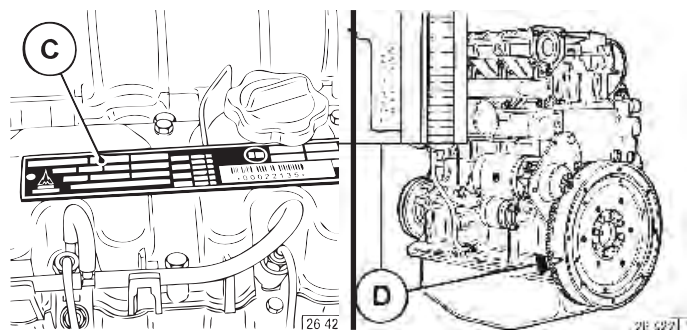
Family 2011

Engine D2011L04_

- D** ▶ Diesel engine
- 2011** ▶ Engine family
- L** ▶ Cylinders in In-line configuration
- 04** ▶ **Number of cylinders**
- _** ▶ External (oil) cooled



The model type A and the engine serial No. B are given in the engine identification plate.

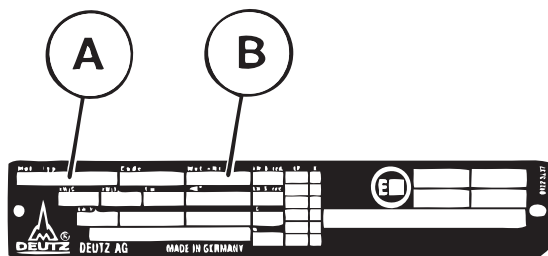
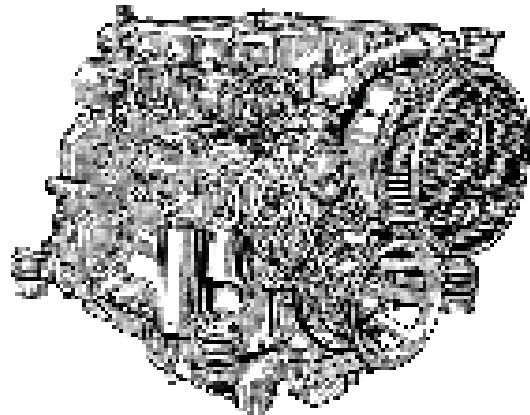


The engine identification plate C is mounted to the valve cover.
The serial No. D is also stamped into the crankcase.

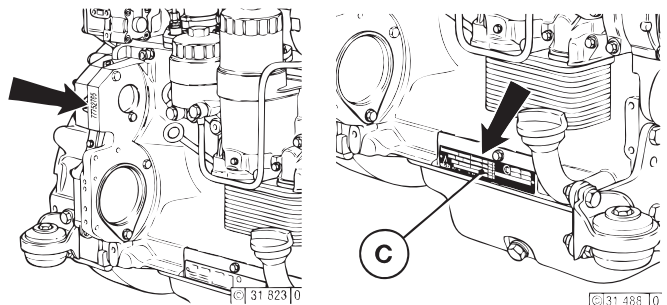
Family 1012/1013

Engine BF4M1012_C

- B** ▶ Turbo
- F** ▶ Highspeed, compact engine
- 4** ▶ Number of cylinders
- M** ▶ Liquid-Cooled
- 1012** ▶ Engine family
- ▶ Integrated cooled
- C** ▶ Charge Air Cooled



The model type A and the engine serial No. B are given in the engine identification plate.



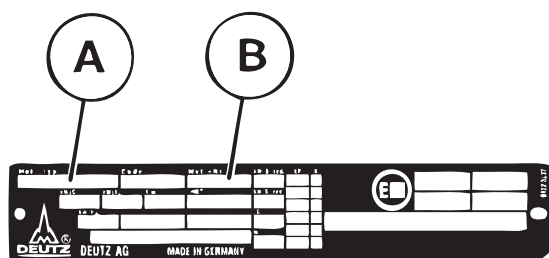
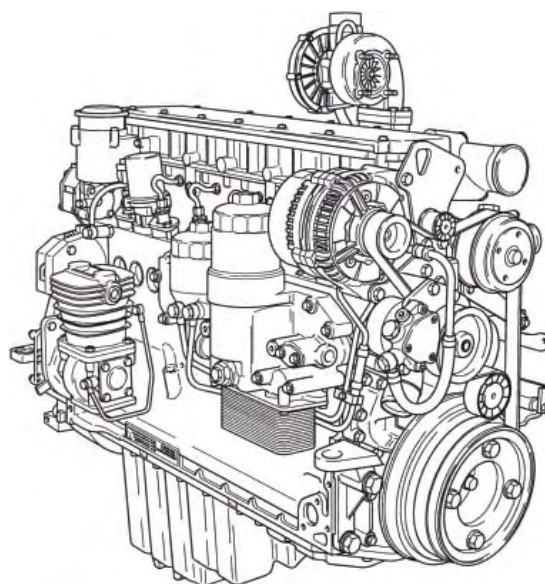
The engine identification plate C is mounted to the crankcase.

The serial No. is also stamped into the crankcase.

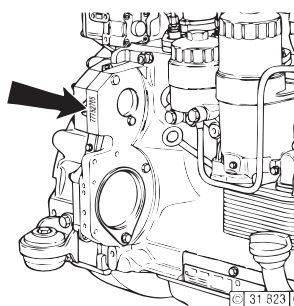
Family 1012/1013

Engine BF6M1013MECP

- B** ▶ Turbo
- F** ▶ Highspeed, compact engine
- 6** ▶ Number of cylinders
- M** ▶ Liquid-Cooled
- 1013** ▶ Engine family
- M** ▶ Marine
- E** ▶ External Cooled
- C** ▶ Charge Air Cooled
- P** ▶ High out put version

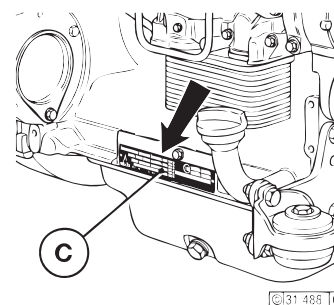


The model type A and the engine serial No. B are given in the engine identification plate.



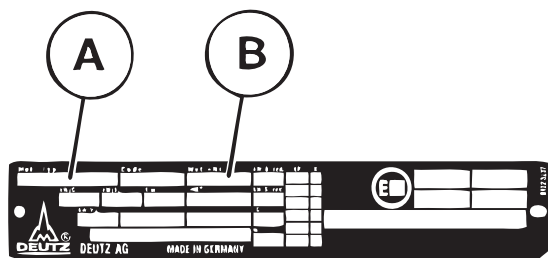
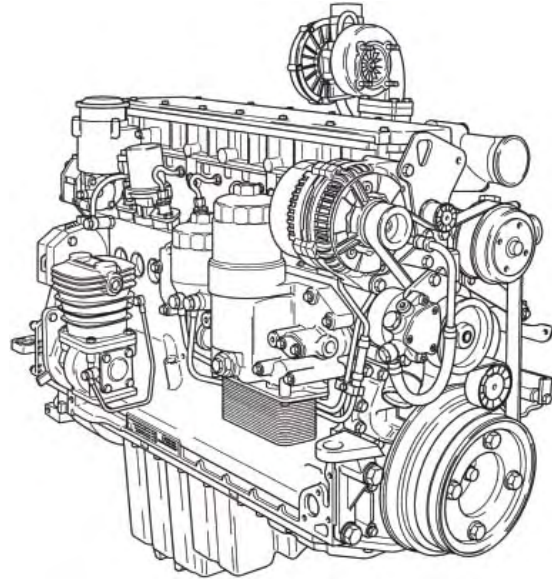
The engine identification plate is mounted to the crankcase.

The serial No. is also stamped into the crankcase.

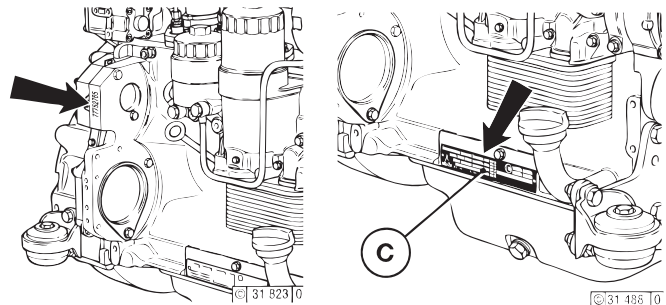


Family 2012/2013 Engine BF6M2012C

- B** ▶ Turbo
- F** ▶ Highspeed, compact engine
- 6** ▶ **Number of cylinders**
- M** ▶ **Liquid-Cooled**
- 2012** ▶ Engine family
- C** ▶ Integrated cooled



The model type A and the engine serial No. B are given in the engine identification plate.



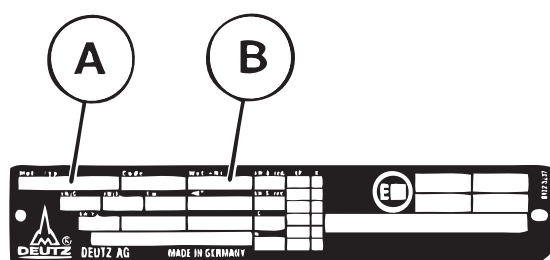
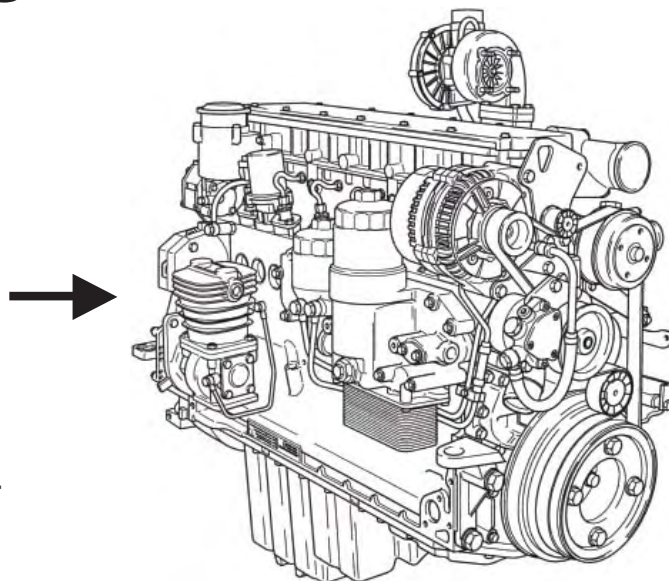
The engine identification plate C is mounted to the crankcase.

The serial No. is also stamped into the crankcase.

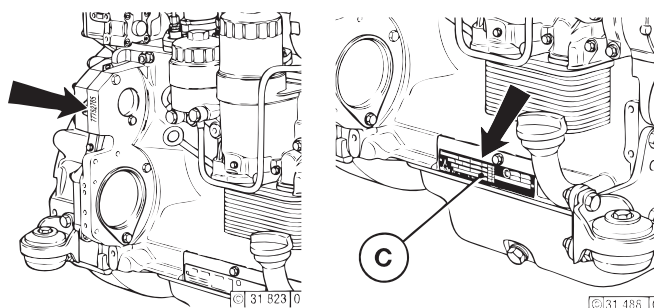
Family 2012/2013

Engine TCD2013L064V

T	▶ Turbo
C	▶ Charge Air Cooled
D	▶ Diesel engine
2013	▶ Engine family
L	▶ Cylinders in In-line configuration
06	▶ Number of cylinders
4V	▶ Four valves per cylinder



The model type A and the engine serial No. B are given in the engine identification plate.

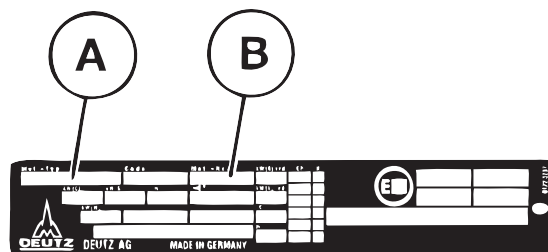
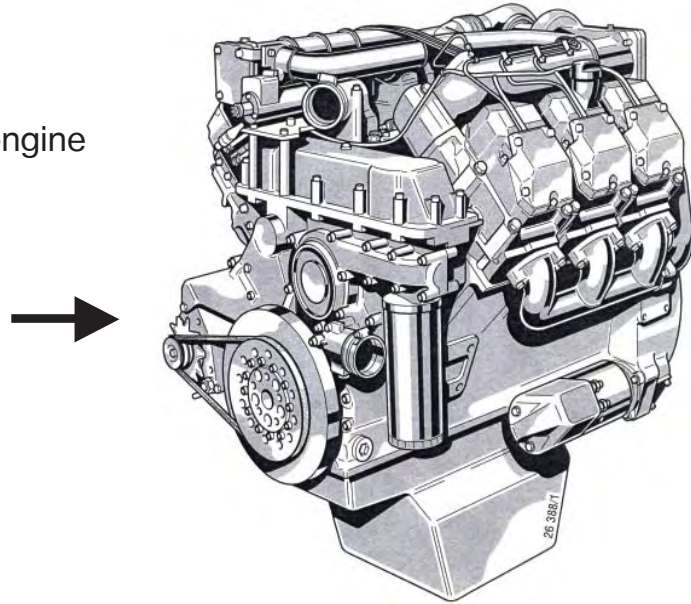


The engine identification plate C is mounted to the crankcase.

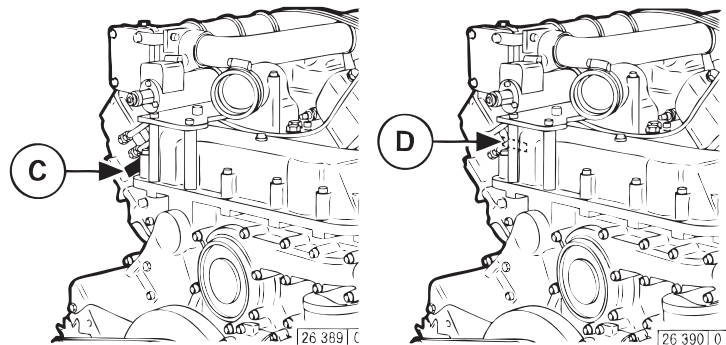
The serial No. is also stamped into the crankcase.

Family 1015 Engine BF6M1015MCP

- B** ▶ Turbo
- F** ▶ Highspeed, compact engine
- 6** ▶ Number of cylinders
- M** ▶ Liquid-Cooled
- 1015** ▶ Engine family
- M** ▶ Marine
- C** ▶ Charge Air Cooled
- P** ▶ High output version



The model type A and the engine serial No. B are given in the engine identification plate.

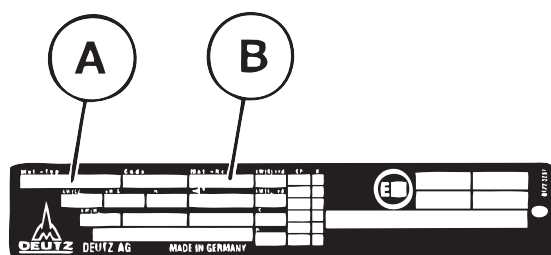
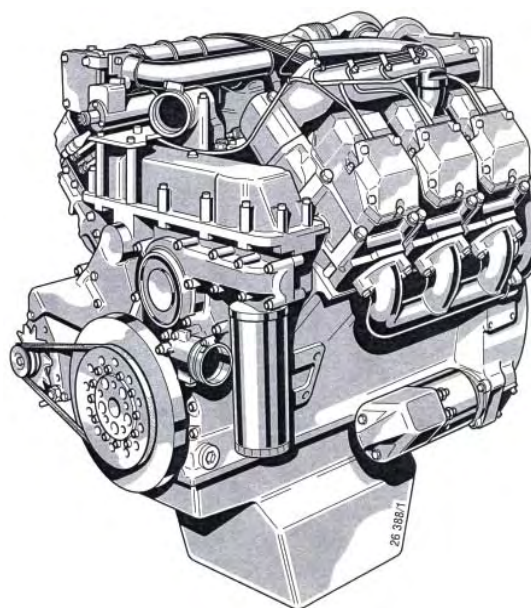


The engine identification plate C is mounted to the crankcase.

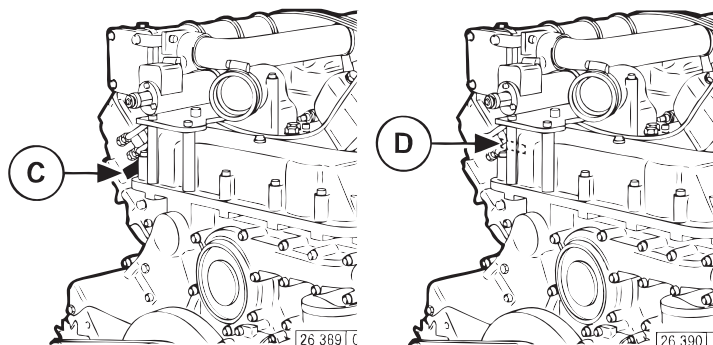
The serial No. D is also stamped into the crankcase.

Family 2015 Engine TCD2015V06

- T** ▶ Turbo
- C** ▶ Charge air cooled
- D** ▶ Diesel engine
- 2015** ▶ Engine family
- V** ▶ Cylinders in V-Configuration
- 06** ▶ Number of cylinders



The model type A and the engine serial No. B are given in the engine identification plate.



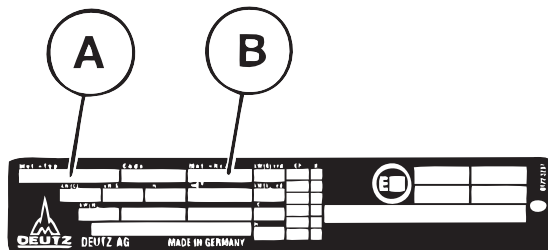
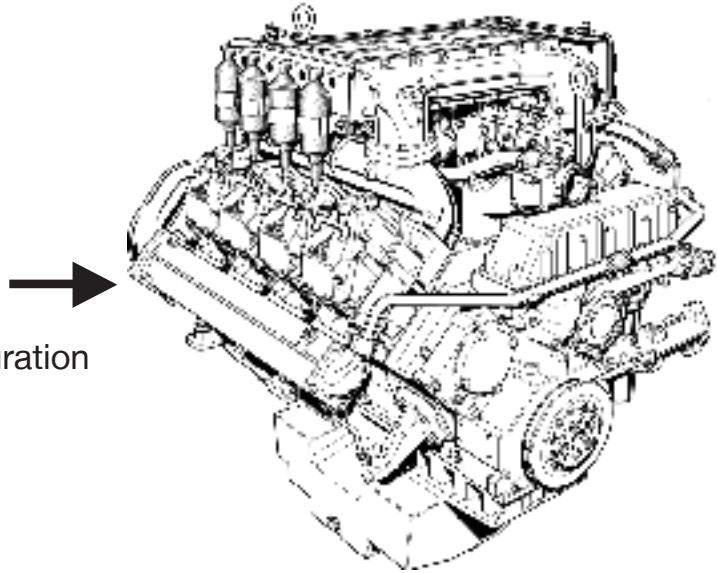
The engine identification plate C is mounted to the crankcase.

The serial No. D is also stamped into the crankcase.

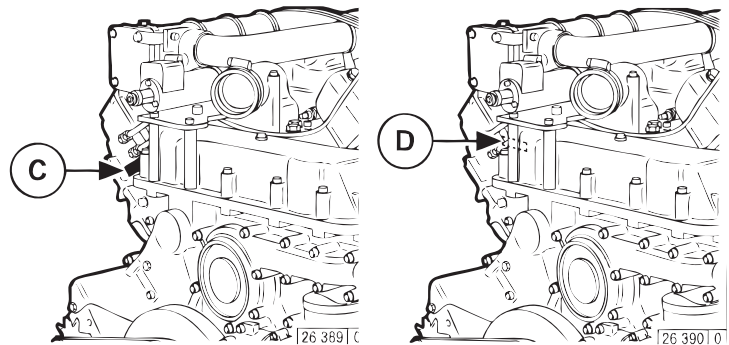
Family 2015

Engine TCG2015V06

T	▶ Turbo
C	▶ Charge air cooled
G	▶ Gass engine
2015	▶ Engine family
V	▶ Cylinders in V-Configuration
06	▶ Number of cylinders



The model type A and the engine serial No. B are given in the engine identification plate.



The engine identification plate C is mounted to the crankcase.

The serial No. D is also stamped into the crankcase.