

**SERVICE MANUAL**

**CRAWLER EXCAVATOR  
R55-3**

**H  
Y  
U  
N  
D  
A  
I**

## CRAWLER EXCAVATOR R55-3

**FOREWORD****SECTION 1****GENERAL**

- Group 1 Safety Hints
- Group 2 Specifications

**SECTION 2****STRUCTURE AND FUNCTION**

- Group 1 Hydraulic Circuit Diagram
- Group 2 Hydraulic Pump
- Group 3 Main Control Valve
- Group 4 Travel Device
- Group 5 Swing Machinery
- Group 6 RCV Lever
- Group 7 Power Train
- Group 8 Swing Circle
- Group 9 Track Frame and Tension Spring

**SECTION 3****TESTING AND ADJUSTING**

- Group 1 Operational Performance Test
- Group 2 Testing and Adjusting Hydraulic Pressure

**SECTION 4****ELECTRICAL SYSTEM**

- Group 1 Component Location
- Group 2 Electrical Circuit Diagram
- Group 3 Electrical Circuit Operation
- Group 4 Monitoring System

**SECTION 5****TROUBLESHOOTING**

- Group 1 Electrical System
- Group 2 Hydraulic Components

**SECTION 6****MAINTENANCE STANDARD**

- Group 1 Major Components
- Group 2 Track and Work Equipment

**SECTION 7****DISASSEMBLY AND ASSEMBLY**

- Group 1 Hydraulic Pump
- Group 2 Main Control Valve
- Group 3 Swing Motor
- Group 4 Travel Motor
- Group 5 Remote Control Valve
- Group 6 Turning Joint

# SECTION 7 DISASSEMBLY AND ASSEMBLY

## GROUP 1 HYDRAULIC PUMP

### 1. NECESSARY TOOLS AND JIGS

The following tools and jigs are necessary to disassemble and reassemble the pump.

#### 1) TOOLS

Name	Quantity	Size (Nominal)
Hexagonal bar spanner	One each	5, 6, 8, 10
Spanner	1	17, 24
Plastic hammer	1	Medium size
Snap ring pliers	1	For hole (Stop ring for 72)
Snap ring pliers	1	For shaft (Stop rings for 28 and 30)
Standard screw-driver	2	Medium size
Torque wrench	-	Wrench which can tighten at the specified torque
Grease	Small	-
Adhesives	Small	LOCTITE #270

#### 2) JIGS

(1) Disassembling table.

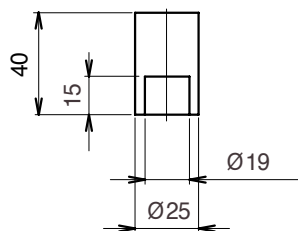


R55NM7HP01

This is plate to stand the pump facing downward.

A square block may be used instead if the shaft end does not contact.

(2) Bearing assembling jig



R55NM7HP02

## **2. CAUTIONS DURING ASSEMBLING AND DISASSEMBLING**

### **1) CAUTIONS FOR DISASSEMBLING**

- Never attempt operating the adjusting screw unless absolutely necessary. Otherwise, the set power may be changed, affecting adversely to the system.
- Take utmost care during disassembly not to knock or drop each part.

### **2) CAUTIONS FOR ASSEMBLING**

- Wash each part thoroughly
- During assembling, take utmost care not to damage the part or allow foreign materials to enter.
- As a rule, the O-ring and oil seal should not be reused.
- In our assembly work, the torque wrench is used to control the torque. Be sure to use the torque wrench.

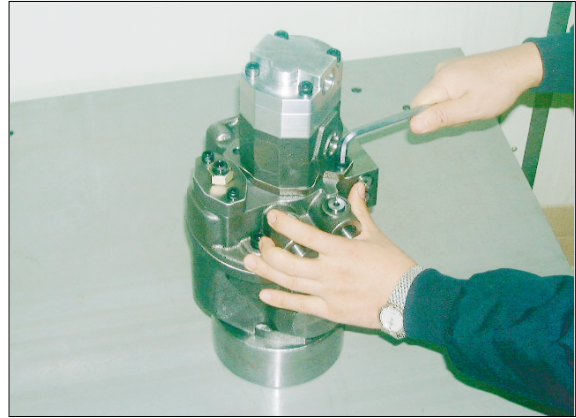
### 3. DISASSEMBLY PROCEDURE

#### 1) DISASSEMBLING THE GEARED PUMP

Remove the hexagonal socket headed bolts (M10 x 25, 2 pieces)

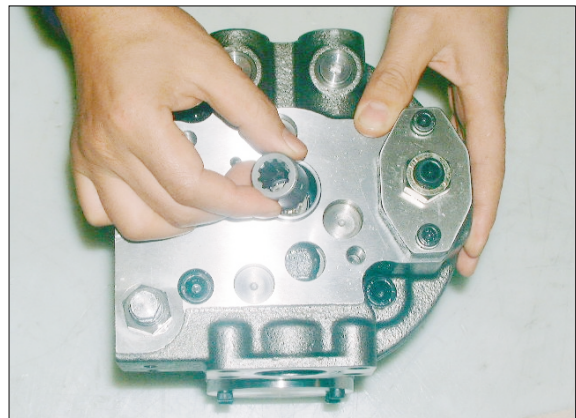
Hexagonal bar spanner  
(Hex. side distance : 8)

Be careful because the O-ring and filter are provided to the match surface of the geared pump.



R55NM7HP03

Remove the coupling.



R55NM7HP04

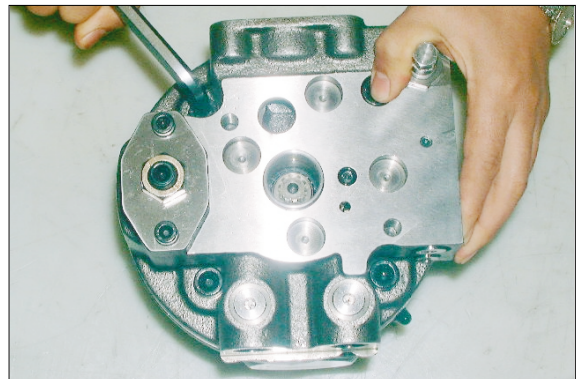
#### 2) DISASSEMBLING THE MAIN PUMP

Remove the cover.

Remove the hexagonal socket headed bolts. (M12 x 30, 3pieces)

and (M12 x 55, 1piece)

Hexagonal bar spanner  
(Hex. side distance : 10)



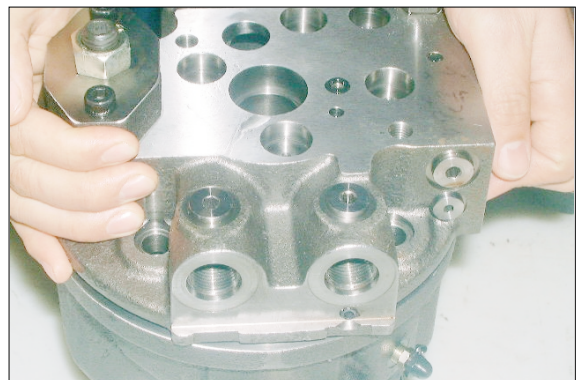
R55NM7HP05

Remove the cover in a horizontal condition.

Connect motor to work table.

Be careful because the control plate is provided to the backside.

When the cover is difficult to remove, knock lightly with a plastic hammer.



R55NM7HP06

Diesel Engines

ABS	Agco-Sisu
Akasaka	Baudouin
BMW	Bukh
Caterpillar	CHN 25/34
Cummins	Daihatsu
Detroit	Deutz
Doosan-Daewoo	Fiat
Ford	GE
Grenaa	Guascor
Hanshin	Hatz
Hino	Honda
Hyundai	Isotta
Isuzu	Iveco
John-Deere	Kelvin
Kioti	Komatsu
Kubota	Liebherr
Lister	Lombardini
MAK	MAN B&W
Mercedes	Mercruiser
Mirrlees BS	Mitsubishi
MTU	MWM
Niigata	Paxman
Perkins	Pielstick
Rolls / Bergen	Ruggerini
Ruston	Scania
Shibaura	Sisu-Valmet
SKL	Smit-Bolnes
Sole	Stork
VM-Motori	Volvo
Volvo Penta	Westerbeke
Wichmann	Yanmar

Machinery

ABG	Airman
Akerman	Ammann
Astra	Atlas Copco
Atlas Weyha.	Atlet
Bell	Bendi
Bigjoe	Bobcat
Bomag	BT
Carelift	Case
Caterpillar	Cesab
Challenger	Champion
Claas	Clark
Combilift	Crown
Daewoo-Doosan	Demag
Deutz-Fahr	Dressta

Machinery

Drott	Dynapack
Extec	Faun
Fendt	Fiat
Fiatallis	Flexicoil
Furukawa	Gehl
Genie	Grove-gmk
Halla	Hamm
Hangcha	Hanix
Hanomag	Hartl
Haulpack	Hiab
Hidromek	Hino truck
Hitachi	Hyster
Hyundai	IHI
Ingersoll-rand	JCB
JLG	John-Deere
Jungheinrich	Kalmar
Kato	Kioti
Kleeman	Kobelco
Komatsu	Kramer
Kubota	Lamborghini
Landini	Liebherr
Linde	Link-belt
Manitou	Massey-Ferg.
Mccormick	MDI-Yutani
Mitsubishi	Moxy
Mustang	Neusson
New-Holland	Nichiyu
Nissan	OK
OM-Pimespo	others-tech
Pel-Job	PH-mining
Poclain	Powerscreen
Same	Samsung
Sandvik	Scania
Schaefer	Schramm
Sennebogen	Shangli
Shibaura	Steiger
Steinbock	Steyr
Still	Sumitomo
Super-pac	Tadano
Takeuchi	TCM
Terex	Toyota
Valpadana	Venieri
Versatile	Vogele
Volvo	Weidemann
Wirtgen	Yale
YAM	Yanmar