

PARTS CATALOG

**CRAWLER EXCAVATOR
R130LC-3**

HYUNDAI

Use the bookmarks for navigation inside the Parts book

Contents of Parts Catalogue

Page	Contents	Serial_No	Revision_No
1	ENGINE		
1010	ENGINE MOUNTING		2001. 2. 1 REV.16
1011	ENGINE MOUNTING(LOW EMISSION)		2001. 2. 1 REV.16
1020	FUEL SYSTEM		
1021	FUEL SYSTEM(LOW EMISSION)		'98.1.31 REV.8
1030	COOLING SYSTEM(-#0808)	- #0808	'96. 2.29 REV.2
1031	COOLING SYSTEM(#0809-)	#0809 -	'97.10.15 REV.7
1032	COOLING SYSTEM(LOW EMISSION)		'98.1.31 REV.8
1040	AIR INTAKE SYSTEM		2001. 9.30 REV.17
1050	EXHAUST SYSTEM		'97.1.10 REV.4
1051	EXHAUST SYSTEM(LOW EMISSION)		2001. 2. 1 REV.16
1060	ENGINE CONTROL SYSTEM		'97. 1.10 REV.4
1061	ENGINE CONTROL SYSTEM(L/EMISSION)		2001. 9.30 REV.17
1070	FUEL TANK(R130LC-3,LCD-3)		2000. 5.31 REV.15
1071	FUEL TANK(R130LCM-3)		2000. 5.31 REV.15
2	HYDRAULIC SYSTEM		
2010	PUMP MOUNTING		'98.1.31 REV.8
2011	PUMP MOUNTING(LOW EMISSION)		'98.1.31 REV.8
2020	MAIN PUMP(-#0177)	- #0177	'98.1.31 REV.8
2021	MAIN PUMP(#0178-)	#0178 -	'98.1.31 REV.8
2022	REGULATOR		'97.1.10 REV.4
2023	GEAR PUMP(-#0177)	- #0177	'96. 2.29 REV.2
2024	GEAR PUMP(#0178-)	#0178 -	'97.1.10 REV.4
2030	HYDRAULIC TANK(R130LC-3, LCD-3)		2002. 8.15 REV.18
2031	HYDRAULIC TANK(R130LCM-3)		2002. 8.15 REV.18
2040	UPPER HYD PIPING(BASE, R130LC-3, LCM-3)		'00.1.20 REV.14
2041	UPPER HYD PIPING(ATTACH, R130LC-3,LCM-3)		2003. 4.28 REV.99
2042	UPPER HYD PIPING(TRAVEL, R130LC-3,LCM-3)		2002. 8.15 REV.18

Contents of Parts Catalogue

Page	Contents	Serial_No	Revision_No
2043	UPPER HYDRAULIC PIPING(R130LCD-3)		'97.6.30 REV.6
2044	TILT BUCKET & BREAKER UPPER PIPING		2002. 8.15 REV.18
2045	CONTROL VALVE(R130LCD-3)		'97.6.30 REV.6
2046	SINGLE ACTING MAIN PIPING(-#1616)	- #1616	2000. 5.31 REV.15
2047	QUICK ATTACH COUPLING PIPING(UPPER)		'98.11.10 REV.11
2048	SINGLE ACTING MAIN PIPING(#1617-)	#1617 -	2003.11.10 REV.99
2049	UPPER HYD PIPING 1(#1749-, 2 PIECE BOOM)	#1749 -	2001. 2. 1 REV.16
204A	UPPER HYD PIPING 2(#1749-, 2 PIECE BOOM)	#1749 -	2001. 2. 1 REV.16
204B	SINGLE PEDAL(#1749-, 2 PIECE BOOM)	#1749 -	2001. 2. 1 REV.16
2050	PILOT HYD PIP(-#0927,CNTL 1, LC-3,LCM-3)	- #0927	'96. 7.10 REV.3
2051	PILOT HYD PIP(-#0927,CNTL 2, LC-3,LCM-3)	- #0927	'96. 7.10 REV.3
2052	PILOT HYD PIPING(CNTL 3, LC-3, LCM-3)		2003. 4.28 REV.99
2053	PILOT HYD PIPING(BASE 1, R130LC-3,LCM-3)		2001. 9.30 REV.17
2054	PILOT HYD PIPING(BASE 2, R130LC-3,LCM-3)		2003. 4.28 REV.99
2055	PILOT HYD PIPING(BASE 3, R130LC-3,LCM-3)		2001. 9.30 REV.17
2056	PILOT HYDRAULIC PIPING(-#0927,R130LC-3)	- #0927	'99.2.20 REV.12
2057	PILOT HYD PIP(#0928-, CNTL 1,LC-3,LCM-3)	#0928 -	2002. 8.15 REV.18
2058	PILOT HYD PIP(#0928-, CNTL 2,LC-3,LCM-3)	#0928 -	2002. 8.15 REV.18
2059	PILOT HYD PIPING(#0928-, R130LCD-3)	#0928 -	2001. 9.30 REV.17
205A	SOLENOID VALVE		2001. 2. 1 REV.16
2060	TRAVEL HYD PIPING(-#1563, R130LC-3)	#1563 -	'00.1.20 REV.14
2061	TRAVEL HYD PIPING(-#1563, R130LCD-3)	#1563 -	'00.1.20 REV.14
2062	TRAVEL HYD PIPING(-#0630, R130LCM-3)	- #0630	'96. 2.29 REV.2
2063	TRAVEL HYD PIPING(#0631-1563,R130LCM-3)	#0631 - #1563	'00.1.20 REV.14
2064	TRAVEL HYD PIPING(#1564-, R130LC-3)	#1564 -	'00.1.20 REV.14
2065	TRAVEL HYD PIPING(#1564-, R130LCD-3)	#1564 -	'00.1.20 REV.14
2066	TRAVEL HYD PIPING(#1564-, R130LCM-3)	#1564 -	2001. 2. 1 REV.16
2067	TRAVEL HYD PIPING(#1804-, EU ONLY)	#1804 -	2001. 9.30 REV.17

Contents of Parts Catalogue

Page	Contents	Serial_No	Revision_No
2070	BOOM HYDRAULIC PIPING(4.6M)		'99.8.31 REV.13
2071	BOOM HYDRAULIC PIPING(4.1M)		'99.8.31 REV.13
2072	TILT BUCKET & BREAKER BOOM PIPING		'97.10.15 REV.7
2073	QUICK COUPLING PIPING(BOOM)		'98.11.10 REV.11
2074	BOOM HYD PIPING(#1749-, 2 PIECE BOOM)	#1749 -	2001. 2. 1 REV.16
2080	ARM HYDRAULIC PIPING(2.5M)		2003. 4.28 REV.99
2081	ARM HYDRAULIC PIPING(1.9M)		2003. 4.28 REV.99
2082	ARM HYDRAULIC PIPING(2.1M)		2003. 4.28 REV.99
2083	ARM HYDRAULIC PIPING(3.0M)		2003. 4.28 REV.99
2084	TILT BUCKET & BREAKER ARM PIPING		
2085	ARM HYDRAULIC PIPING(2.75M)		2003. 4.28 REV.99
2086	QUICK COUPLING PIPING(ARM)		'98.11.10 REV.11
2090	ATTACHMENT GREASE LUB SYSTEM(4.6M)		
2091	ATTACHMENT GREASE LUB SYSTEM(4.1M)		
2092	BOOM GREASE LUB SYS(#1749-,2 PIECE BOOM)	#1749 -	2001. 2. 1 REV.16
2100	MAIN CONTROL VALVE(1/2)		2002. 8.15 REV.18
2101	MAIN CONTROL VALVE(2/2, -#1129)	- #1129	2001. 2. 1 REV.16
2102	MAIN CONTROL VALVE(1/2, USA ONLY)		'97.10.15 REV.7
2103	MAIN CONTROL VALVE(2/2, USA ONLY)		'97.10.15 REV.7
2104	MAIN CONTROL VALVE(2/2, #1130-)	#1130 -	2002. 8.15 REV.18
2110	SWING MOTOR(-#1904)	- #1904	2002. 8.15 REV.18
2111	SWING REDUCTION GEAR(-#1904)	- #1904	2002. 8.15 REV.18
2112	SWING MOTOR(#1905-)	#1905 -	2002. 8.15 REV.18
2113	SWING REDUCTION GEAR(#1905-)	#1905 -	2002. 8.15 REV.18
2114	SWING REACTIONLESS VALVE BLOCK(#1905-)	#1905 -	2002. 8.15 REV.18
2120	REMOTE CONTROL LEVER(-#1442)	- #1442	'99.8.31 REV.13
2121	REMOTE CONTROL LEVER(#1443-)	#1443 -	2002. 8.15 REV.18
2122	REMOTE CONTROL LEVER(#1801-, EU ONLY)	#1801 -	2001. 2. 1 REV.16

Contents of Parts Catalogue

Page	Contents	Serial_No	Revision_No
2130	REMOTE CONTROL PEDAL		
2140	TURNING JOINT		'96. 2.29 REV.2
2141	TURNING JOINT(R130LCD-3)		'96. 2.29 REV.2
2150	TRAVEL MOTOR(1/2, -#1563, LC-3, LCD-3)	- #1563	'00.1.20 REV.14
2151	TRAVEL MOTOR(2/2, -#1563, LC-3, LCD-3)	- #1563	'00.1.20 REV.14
2152	TRAVEL REDUCTION GEAR(-#1563,LC-3,LCD-3)	- #1563	'00.1.20 REV.14
2153	TRAVEL MOTOR(1/2, #0631-1563, R130LCM-3)	#0631 - #1563	'00.1.20 REV.14
2154	TRAVEL MOTOR(2/2, #0631-1563, R130LCM-3)	#0631 - #1563	'00.1.20 REV.14
2155	TRAVEL REDUCTION GEAR(#0631-1563, LCM-3)	#0631 - #1563	'00.1.20 REV.14
2156	TRAVEL MOTOR(1/3, #1564-, LC-3, LCD-3)	#1564 -	'00.1.20 REV.14
2157	TRAVEL MOTOR(2/3, #1564-, LC-3, LCD-3)	#1564 -	'00.1.20 REV.14
2158	TRAVEL MOTOR(3/3, #1564-, LC-3, LCD-3)	#1564 -	'00.1.20 REV.14
2159	TRAVEL REDUCTION GEAR(#1564-,LC-3,LCD-3)	#1564 -	'00.1.20 REV.14
215A	TRAVEL MOTOR(1/3, #1564-, R130LCM-3)	#1564 -	'00.1.20 REV.14
215B	TRAVEL MOTOR(2/3, #1564-, R130LCM-3)	#1564 -	'00.1.20 REV.14
215C	TRAVEL MOTOR(3/3, #1564-, R130LCM-3)	#1564 -	'00.1.20 REV.14
215D	TRAVEL REDUCTION GEAR(#1564-, R130LCM-3)	#1564 -	'00.1.20 REV.14
215E	TRAVEL MOTOR(1/2, #1804-, EU ONLY)	#1804 -	2001. 9.30 REV.17
215F	TRAVEL MOTOR(2/2, #1804-, EU ONLY)	#1804 -	2001. 9.30 REV.17
215G	TRAVEL REDUCTION GEAR(#1804-, EU ONLY)	#1804 -	2001. 9.30 REV.17
2160	BOOM CYLINDER		2004. 1.27 REV.99
2161	BOOM CYLINDER(ADJUST, #1749-)	#1749 -	2004. 1.27 REV.99
2170	ARM CYLINDER		2004. 1.27 REV.99
2180	BUCKET CYLINDER		2001. 2. 1 REV.16
2190	DOZER BLADE CYLINDER(R130LCD-3)		'98.7.25 REV.10
2200	CYLINDER PROTECTOR(R130LCM-3)		
2211	ARM SAFETY LOCK SYSTEM		2001. 2. 1 REV.16
2220	BOOM SAFETY LOCK SYSTEM(-#1376)	- #1376	'99.2.28 REV.12

Contents of Parts Catalogue

Page	Contents	Serial_No	Revision_No
2221	BOOM SAFETY LOCK SYSTEM(#1377-1616)	#1377 - #1616	2000. 5.31 REV.15
2222	BOOM SAFETY LOCK SYS(#1617-)	#1617 -	2001. 2. 1 REV.16
2223	BOOM SAFETY LOCK SYSTEM(#1749-, 2 PIECE)	#1749 -	2001. 2. 1 REV.16
2230	ATTACH BREAKER PIPING(-#1616, S/ACTING)	- #1616	2000. 5.31 REV.15
2240	QUICK COUPLING CYLINDER		'98.11.10 REV.11
2245	ADJUST CYLINDER(2 PIECE BOOM)		2001. 2. 1 REV.16
2250	DOUBLE ACTING HYD PIPING KIT 1(#1617-)	#1617 -	2003.10.20 REV.99
2251	DOUBLE ACTING HYD PIPING KIT 2(#1617-)	#1617 -	2003.10.20 REV.99
2252	DOUBLE ACTING MAIN PIPING KIT(#1617-)	#1617 -	2002.11.10 REV.99
2252A	DOUBLE ACTING MAIN P/P(2 PIECE BOOM)		2003.12.05 REV.99
2253	ATTACH PIPING KIT(#1617-, S & D/ACTING)	#1617 -	2003.10.20 REV.99
2253A	ATTACH PIPING KIT(2 PIECE BOOM)		2003.11.10 REV.99
2254	SINGLE PEDAL(#1617-, DOUBLE ACTING)	#1617 -	2000. 5.31 REV.15
3	ELECTRIC SYSTEM		
3010	ELECTRIC PARTS 1(-#1168)	- #1168	'98.7.25 REV.10
3011	ELECTRIC PARTS 1(#1169-)	#1169 -	2003. 4.28 REV.99
3020	ELECTRIC PARTS 2(-#1168)	- #1168	'98.7.25 REV.10
3021	ELECTRIC PARTS 3(-#1168)	- #1168	
3022	ELECTRIC PARTS 2(#1169-)	#1169 -	2003. 4.28 REV.99
3023	ELECTRIC PARTS 3(#1169-)	#1169 -	2003. 4.28 REV.99
3024	ALTERNATOR(-#1249)	- #1249	
3030	CAB ELECTRIC 1(-#0927)	- #0927	'99.8.31 REV.13
3031	CAB ELECTRIC 2(-#0927)	- #0927	'99.8.31 REV.13
3033	CAB ELECTRIC 1(#0928-)	#0928 -	2003. 4.28 REV.99
3034	CAB ELECTRIC 2(#0928-)	#0928 -	2002. 8.15 REV.18
3040	CONTROL PANEL(-#0927)	- #0927	'96. 7.10 REV.3
3041	CONTROL PANEL(#0928-)	#0928 -	2000. 5.31 REV.15
3050	AIRCON & HEATER MOUNTING(-#0927)	- #0927	2002. 9. 5 REV.99

Contents of Parts Catalogue

Page	Contents	Serial_No	Revision_No
3051	HEATER & EVAPORATOR UNIT(-#0927)	- #0927	2001. 9.30 REV.17
3052	AIR CONDITIONER MOUNTING(-#0927)	- #0927	2002. 9. 5 REV.5
3053	AIR CONDITIONER DUCT ASSY(-#0927)	- #0927	'96. 7.10 REV.3
3060	HEATER MOUNTING(-#0927)	- #0927	'96. 7.10 REV.3
3070	AIRCON & HEATER MOUNTING(#0928-)	#0928 -	2003. 4.28 REV.99
3071	HEATER & EVAPORATOR UNIT(#0928-)	#0928 -	2001. 9.30 REV.17
3072	AIRCON MOUNTING(#0928-)	#0928 -	2003. 4.28 REV.99
3073	EVAPORATOR UNIT(#0928-)	#0928 -	2001. 9.30 REV.17
3080	HEATER MOUNTING(#0928-)	#0928 -	2003. 4.28 REV.99
3081	HEATER UNIT(#0928-)	#0928 -	2001. 9.30 REV.17
4	UPPER STRUCTURE		
4010	UPPER FRAME & C/WEIGHT(R130LC-3,LCD-3)		2002. 8.15 REV.18
4011	UPPER FRAME & COUNTERWEIGHT(R130LCM-3)		2002. 8.15 REV.18
4020	COWLING 1(R130LC-3, LCD-3)		'99.8.31 REV.13
4021	COWLING 1(R130LCM-3)		'99.8.31 REV.13
4022	COWLING 2(R130LC-3, LCD-3)		2002. 8.15 REV.18
4023	COWLING 2(R130LCM-3)		2002. 8.15 REV.18
4024	COWLING 3(R130LC-3, LCD-3)		'99.8.31 REV.13
4025	COWLING 3(R130LCM-3)		'99.8.31 REV.13
4030	ENGINE HOOD(-#0766, R130LC-3, LCD-3)	- #0776	'96. 2.29 REV.2
4031	ENGINE HOOD(#0767-, R130LC-3, LCD-3)	#0767 -	'99.8.31 REV.13
4032	ENGINE HOOD(-#1028, R130LCM-3)	- #1028	'97.10.15 REV.7
4033	ENGINE HOOD(#1029-, R130LCM-3)	#1029 -	'99.8.31 REV.13
4040	UNDER COVER(R130LC-3, LCD-3)		2002. 9.30 REV.17
4041	UNDER COVER(R130LCM-3)		2001. 9.30 REV.17
4050	CAB MOUNTING(-#0927, R130LC-3, LCD-3)	- #0927	'99.8.31 REV.13
4051	CAB MOUNTING(-#0927, R130LCM-3)	- #0927	'99.8.31 REV.13
4052	CAB ASSY(1/3, -#0927, R130LC-3, LCD-3)	- #0927	2000. 5.31 REV.13

Contents of Parts Catalogue

Page	Contents	Serial_No	Revision_No
4053	CAB ASSY(1/3, -#0927, R130LCM-3)	- #0927	2000. 5.31 REV.15
4054	CAB ASSY(2/3, -#0927, R130LC-3, LCD-3)	- #0927	'99.8.31 REV.13
4055	CAB ASSY(2/3, -#0927, R130LCM-3)	- #0927	'99.8.31 REV.13
4056	CAB MOUNTING(#0928-, R130LC-3, LCD-3)	#0928 -	2001. 9.30 REV.17
4057	CAB MOUNTING(#0928-, R130LCM-3)	#0928 -	2001. 9.30 REV.17
4058	CAB ASSY(1/3, #0928-, R130LC-3, LCD-3)	#0928 -	2001. 9.30 REV.17
4059	CAB ASSY(1/3, #0928-, R130LCM-3)	#0928 -	2001. 9.30 REV.17
405A	CAB ASSY(2/3, #0928-, R130LC-3, LCD-3)	#0928 -	2001. 9.30 REV.17
405B	CAB ASSY(2/3, #0928-, R130LCM-3)	- #0927	2001. 9.30 REV.17
4060	CAB ASSY(3/3, -#0927, R130LC-3, LCD-3)	- #0927	2005.10.31 REV.99
4061	CAB ASSY(3/3, -#0927, R130LCM-3)	#0928 -	2005.10.31 REV.99
4062	CAB ASSY(3/3, #0928-, R130LC-3, LCD-3)	#0928 -	2005.10.31 REV.99
4063	CAB ASSY(3/3, #0928-, R130LCM-3)	#0928 -	2005.10.31 REV.99
4070	CAB INTERIOR 1(-#0927)	- #0927	'99.8.31 REV.13
4071	CAB INTERIOR 2(-#0927)	- #0927	2002. 8.15 REV.18
4072	BOTTOM PLATE & MOUNTING(-#0927)	- #0927	'99.8.31 REV.13
4073	TILT BUCKET BOTTOM PLATE & MTG	- #0927	'99.8.31 REV.13
4074	CONSOLE BOX(-#0927)	- #0927	2001. 9.30 REV.17
4075	SEAT(-#1867)	- #1867	2002. 9. 5 REV.99
4075A	SEAT(#1868-)	#1868 -	2001. 9.30 REV.17
4076	CAB INTERIOR 1(#0928-1816)	#0928 - #1816	2001. 9.30 REV.17
4076A	CAB INTERIOR 1(#1817-)	#1817 -	2001. 9.30 REV.17
4077	CAB INTERIOR 2(#0928-)	#0928 -	'99.8.31 REV.13
4078	BOTTOM PLATE & MOUNTING(#0928-1006)	#0928 - #1006	'99.8.31 REV.13
4079	TILT BKT BOTTOM PLATE & MTG(#0928-1006)	#0928 - #1006	'99.8.31 REV.13
407A	CONSOLE BOX(#0928-)	#0928 -	'99.8.31 REV.13
407B	BOTTOM PLATE & MOUNTING(#1007-)	#1007 -	2000. 5.31 REV.15
407C	TILT BUCKET BOTTOM PLATE & MTG	#1007 -	'99.8.31 REV.13

Contents of Parts Catalogue

Page	Contents	Serial_No	Revision_No
407D	BOTTOM PLATE & MTG(#1749-, 2 PIECE BOOM)	#1749 -	2001. 2. 1 REV.16
4080	BATTERY BOX MOUNTING		'99.8.31 REV.13
4081	BATTERY BOX		'99.8.31 REV.13
4082	BATTERY BOX ELECTRIC PARTS		2001. 2. 1 REV.16
4083	FUEL FILLER PUMP(-#1575)	- #1575	2001. 2. 1 REV.16
4084	FUEL FILLER PUMP(#1576-)	#1576 -	2001. 2. 1 REV.16
4090	SWING RING GREASE LUB SYSTEM		2002. 8.15 REV.18
4100	CAB WINDOW PROTECTOR(R130LCM-3)		
5	LOWER STRUCTURE		
5010	LOWER FRAME(R130LC-3, LCD-3)		2002. 8.15 REV.18
5011	LOWER FRAME(-#0630, R130LCM-3)	- #0630	'96. 2.29 REV.2
5012	LOWER FRAME(#0631-, R130LCM-3)	#0631 -	2002. 8.15 REV.18
5013	LOWER COVER GROUP(R130LC-3, LCD-3)		2001. 2. 1 REV.16
5014	LOWER COVER GROUP(R130LCM-3)		2001. 2. 1 REV.16
5020	LOWER ROLLER(130LC-3, LCD-3)		'96. 7.10 REV.3
5021	UPPER & LOWER ROLLER(#0631-, R130LCM-3)	#0631 -	'96. 2.29 REV.2
5030	UPPER ROLLER(R130LC-3, LCD-3)		2002. 8.15 REV.18
5040	IDLER(R130LC-3, LCD-3, LCM-3)		2002. 8.15 REV.18
5041	IDLER(#0631-, R130LCM-3)		2002. 8.15 REV.18
5050	TRACK CHAIN(-#0981, R130LC-3, LCM-3)	- #0981	2001. 9.30 REV.17
5051	TRACK CHAIN(#0982-, R130LC-3, LCD-3)	#0982 -	2000. 5.31 REV.15
5052	TRACK CHAIN(-#0630, R130LCM-3)	- #0630	'98.4.30 REV.9
5053	TRACK CHAIN(#0631-, R130LCM-3)	#0631 -	2002. 8.15 REV.18
5060	ADJUST COMPONENT(R130LC-3, LCD-3, LCM-3)		2002. 8.15 REV.18
5061	ADJUST COMPONENT(#0631-, R130LCM-3)	#0631 -	2002. 8.15 REV.18
5070	DOZER BLADE(R130LCD-3)		'97.10.15 REV.7
6	ATTACHMENT		
6010	BOOM MOUNTING(4.6M)-STD(LC/LCD-3)		2003. 4.28 REV.99

Contents of Parts Catalogue

Page	Contents	Serial_No	Revision_No
6011	BOOM MOUNTING(-#0630, 4.6M, R130LCM-3)	- #0630	'98.11.10 REV.11
6012	BOOM MOUNTING(#0631-, 4.6M, R130LCM-3)	#0631 -	2001. 2. 1 REV.16
6013	BOOM MOUNTING(4.1M)		2000. 2. 1 REV.16
6014	BOOM MOUNTING(-#1438, 4.1M, R130LCM-3)	- #1438	2000. 5.31 REV.15
6015	BOOM MOUNTING(#1749-, 2 PIECE BOOM)	#1749 -	2001. 2. 1 REV.16
6016	BOOM(#1749-, 2 PIECE BOOM)	#1749 -	2002. 8.15 REV.18
6020	ARM(2.5M, STD)		2003. 4.28 REV.99
6021	ARM(-#1438, 2.5M, R130LCM-3)	- #1438	2000. 5.31 REV.15
6022	ARM(1.9M)		2001. 9.30 REV.17
6023	ARM(-#1438, 1.9M, R130LCM-3)	- #1438	2000. 5.31 REV.15
6024	ARM(2.1M)		2001. 9.30 REV.17
6025	ARM(-#1438, 2.1M, R130LCM-3)	- #1438	2000. 5.31 REV.15
6026	ARM(3.0M)		2001. 9.30 REV.17
6027	ARM(-#1438, 3.0M, R130LCM-3)	- #1438	2000. 5.31 REV.15
6028	ARM(2.75M)		2001. 9.30 REV.17
6029	ARM(-#1438, 2.75M, R130LCM-3)	- #1438	2000. 5.31 REV.15
6030	BUCKET CONTROL GROUP(R130LC-3, LCD-3)		2002. 8.15 REV.18
6031	BUCKET CONTROL GROUP(R130LCM-3)		2002. 8.15 REV.18
6032	QUICK COUPLING LINK ASSY		'98.11.10 REV.11
6040	BUCKET(0.51M3 PCSA HEAPED, STD)		2003. 4.28 REV.99
6041	BUCKET(0.22M3 PCSA HEAPED)		'98.11.10 REV.11
6042	BUCKET(0.40M3 PCSA HEAPED)		'98.11.10 REV.11
6043	BUCKET(0.46M3 PCSA HEAPED)		'98.11.10 REV.11
6044	BUCKET(0.58M3 PCSA HEAPED)		'98.11.10 REV.11
6045	BUCKET(0.63M3 PCSA HEAPED)		'98.11.10 REV.11
6046	BUCKET(0.76M3 PCSA HEAPED)		'98.11.10 REV.11
6047	BUCKET(0.55M3 PCSA HEAPED, S/F)		'98.1.31 REV.8
6048	BUCKET(0.45M3 PCSA HEAPED, D/C)		'98.1.31 REV.8

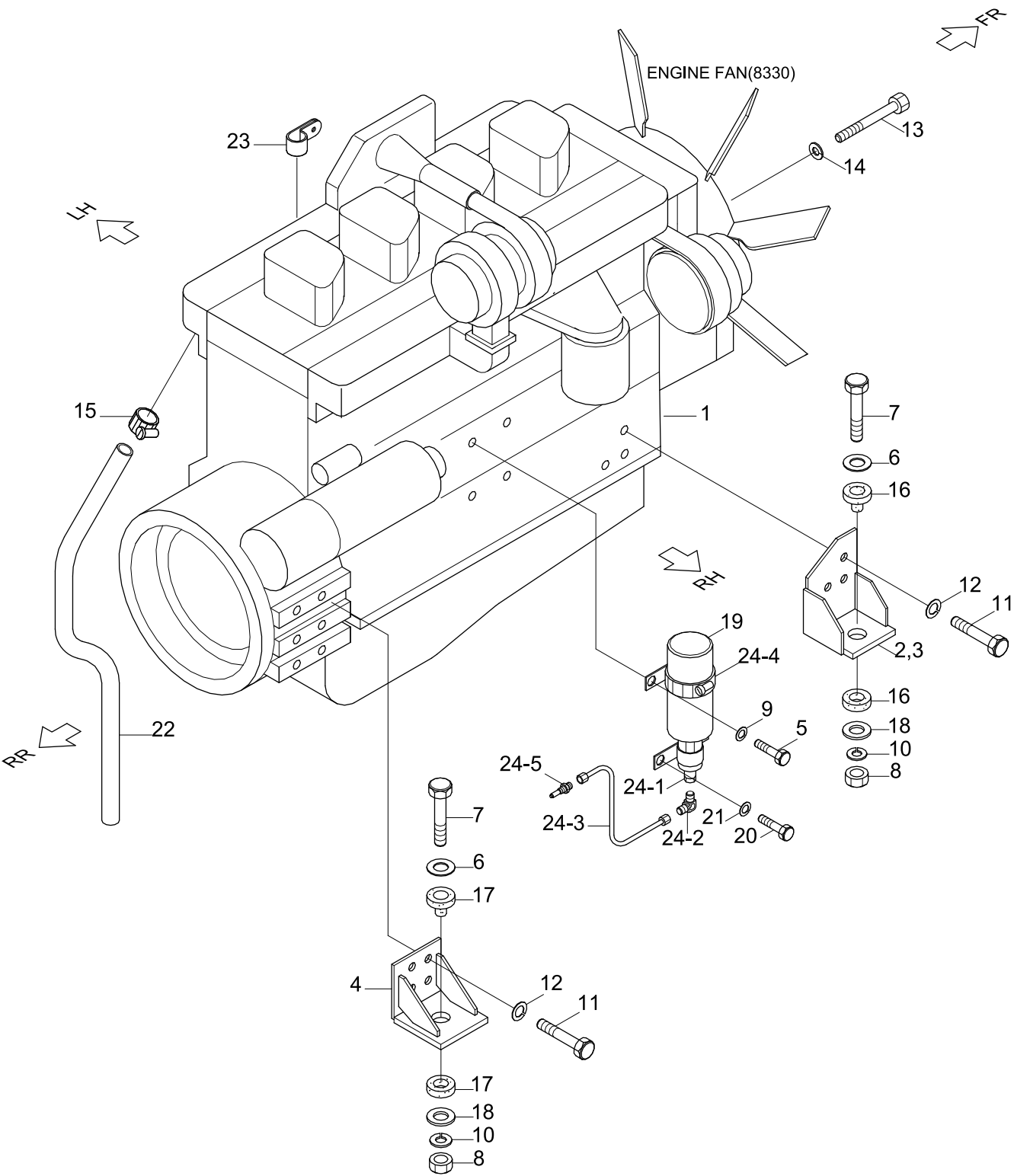
Contents of Parts Catalogue

Page	Contents	Serial_No	Revision_No
6049	BUCKET(0.56M3 PCSA HEAPED)		'99.8.31 REV.13
604A	BUCKET(0.68M3 PCSA HEAPED)		'00.1.20 REV.14
7	OTHERS		
7010	TOOLS		2001. 2. 1 REV.16
7020	DECALS(R130LC-3)		2002. 8.15 REV.18
7021	DECALS(R130LCD-3)		2002. 8.15 REV.18
7022	DECALS(R130LCM-3)		2002. 8.15 REV.18
7040	HYPER DAT		'96. 7.10 REV.3
7050	RECOMMEND SPARE PARTS KIT		2003.11.25 REV.99
8	ENGINE BASE		
8010	FRONT DRIVE ADAPTER		
8020	AIR INTAKE HEATER		
8030	DATAPLATE		
8040	ROCKER LEVERS		
8050	VALVE TAPPET		
8060	CYLINDER BLOCK		
8070	CRANKSHAFT AND MAIN BEARING		
8071	CRANKSHAFT AND MAIN BEARING		
8080	FRONT GEAR COVER		
8090	CAM FOLLOWER COVER		
8091	INJECTION STARTING AID		
8100	FRONT GEAR TRAIN ACCESORY DRIVE		
8110	FUEL DRAIN LOCATION		
8120	THERMOSTAT		
8130	ALTERNATOR LOCATION		
8140	ALTERNATOR DRIVE		
8150	MECHANICAL TACHOMETER DRIVE		

Contents of Parts Catalogue

Page	Contents	Serial_No	Revision_No
8160	FAN DRIVE		
8180	AIR FUEL CONTROL PLUMBING		
8190	FUEL FILTER		
8200	FUEL FILTER PLUMBING		
8210	FLYWHEEL HOUSING		
8211	ENGINE FAN		
8220	BASE FUEL PUMP		
8230	FUEL PUMP COUPLING		
8250	FUEL SYSTEM ACCESSORIES 2		
8260	FUEL PLUMBING		
8261	FUEL PLUMBING		
8270	FUEL SHUTOFF VALVE		2006.10.31 REV.6K
8280	FLYWHEEL		
8290	LIFTING BRACKET		
8300	LUBRICATING OIL COOLER		
8310	OIL LEVEL GAUGE 1		
8320	OIL LEVEL GAUGE 2		
8330	LUBRICATING OIL PUMP		
8340	CYLINDER BLOCK COVER		
8360	OIL PAN 1		
8370	OIL PAN 2		
8380	CONNECTING ROD AND PISTON		
8381	CONNECTING ROD AND PISTON		
8390	CAMSHAFT		
8400	FUEL INJECTOR		
8401	FUEL INJECTOR		
8410	CYLINDER HEAD		
8420	TURBOCHARGER 1		
8430	TURBOCHARGER 2		
8440	CYLINDER HEAD GASKET		
8450	STARTING MOTOR AND MOUNTING		2001. 9.30 REV.17
8460	FAN PILOT SPACER		
8480	TURBOCHARGER LOCATION		
8490	THERMOSTAT HOUSING		
8500	TURBOCHARGER LOCATION		
8510	VALVE COVER		
8520	AFTERCOOLER PLUMBING		
8530	ENGINE VENT PLUMBING		
8540	WATER INLET CONNECTION		
8560	WATER PUMP		
8570	EXHAUST PLUMBING		
8580	SERVICE GASKET SET(PRE-L/EMISSION)		

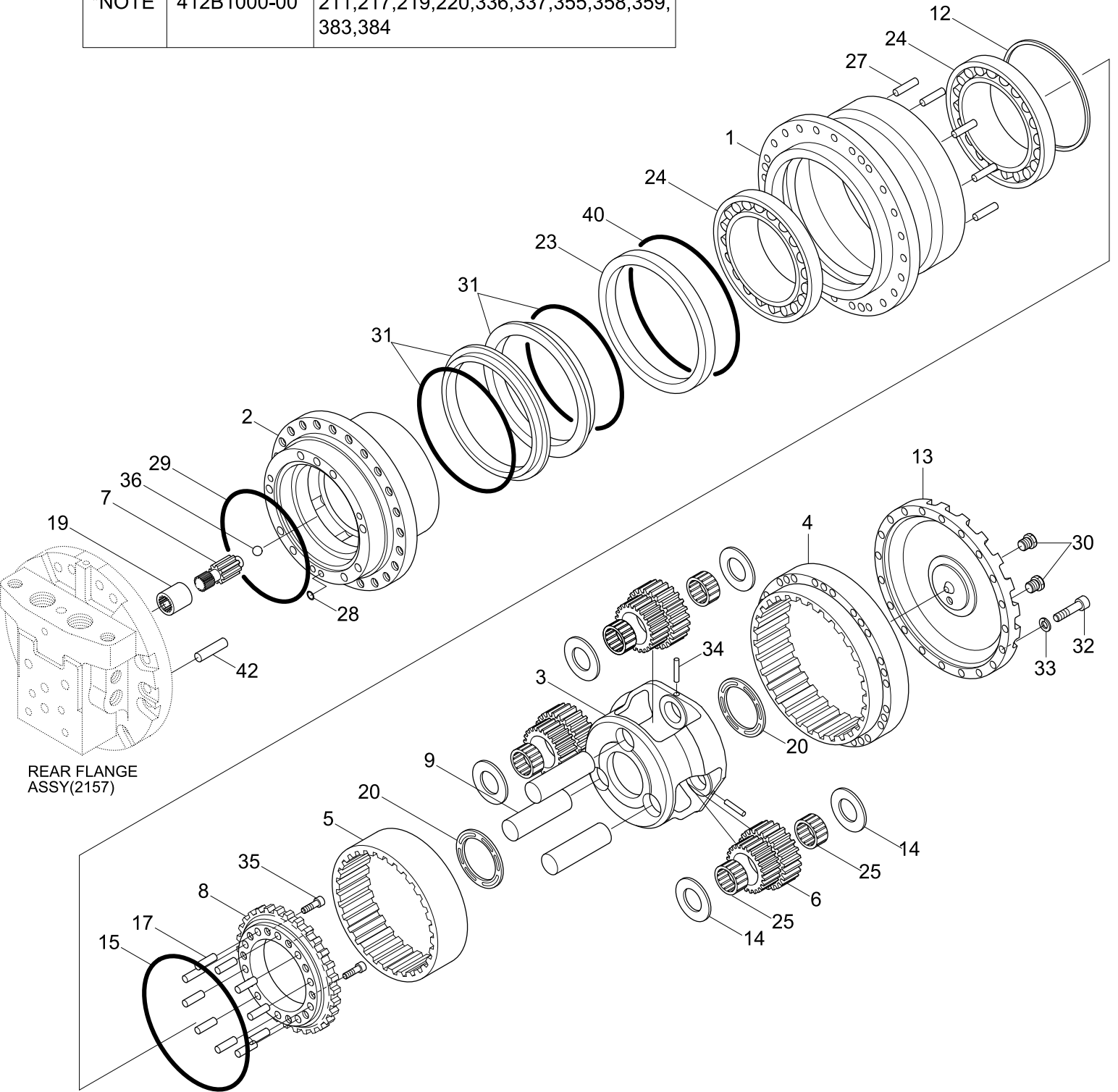
ENGINE MOUNTING



Item	Part_No	IS	Ord	T	Description	Qty	Serial_No	ITC	Remark
N1	11E6-1001	20			ENGINE ASSY	1			NOT
2	11E6-1015	20			BRACKET-FR , LH	1			
3	11E6-1016	20			BRACKET-FR , RH	1			
4	11E6-1017	20			BRACKET-REAR	2			
5	S015-080152				BOLT-HEX	2		-	
6	E111-1009	10			WASHER	8			
7	S017-221204				BOLT	4			
8	S205-221004				NUT-HEX	4			
9	S411-080002				WASHER-SPRING	2		-	
10	S411-220002				WASHER-SPRING	4			
11	S017-120252				BOLT-HEX	14			
12	S411-120002				WASHER-SPRING	4			
13	S017-100852				BOLT-HEX	4			
14	S401-102002				WASHER-PLAIN	1			
15	S520-027000				CLAMP-HOSE	1			
16	11E6-1008	10			RESILIENT-FRONT	2	#0001 -	-	
17	11E6-1009	10			RESILIENT-REAR	2	#0001 -	-	

TRAVEL REDUCTION GEAR(#1564-, LC-3, LCD-3)

	SEAL KIT NO	ITEM
*NOTE	412B1000-00	28,29,31,40,132,135,139,208,209,210,211,217,219,220,336,337,355,358,359,383,384



Item	Part_No	IS	Ord	T	Description	Qty	Serial_No	ITC	Remark
*	@				TRAVEL MOTOR	1	#1564 -	-	NOT
*-1	412B1001-000				.T/REDUCTION GEAR	1			
*-11	400B1141-00				..HUB ASSY	1			
1	400B1200-00				...HUB	1			
4	400B1004-020				...GEAR-RING	1			
*-12	400B1201-00				..SPINDLE KIT	1			
*-12	400B1008-010				...SPINDLE ASSY	1			
2	HE4B00217			SPINDLE	1			
8	400B1008-010			SPINDLE ASSY	1			
17	561012A				...PIN-PARALLEL	10			
N35	M16X2.0X30L				...BOLT-SOCKET	10			NOT
*-13	400B1100-00				...CARRIER KIT	1			
*-13	400B1101-00				...CARRIER	1			
3	400B1003-010			CARRIER	1			
6	400B1006-000			GEAR-CLUSTER	3			
9	400B1009-010			SHAFT	3			
14	140F1014-010			COLLAR-THRUST	6			