



Parts Manual

D353E MARINE ENGINE

S/N: 47B1-UP

Use the bookmarks for navigation inside of the catalog

D353E MARINE ENGINE

Media Number - UE034303-00 | Publication Date - 01/04/1984 | Date
Updated - 11/11/2006

8L3922 ENGINE ARRANGEMENT--Part 1 of 2
Serial No. 47B1780 to 47B4207 inclusive

ENTIRE GROUP

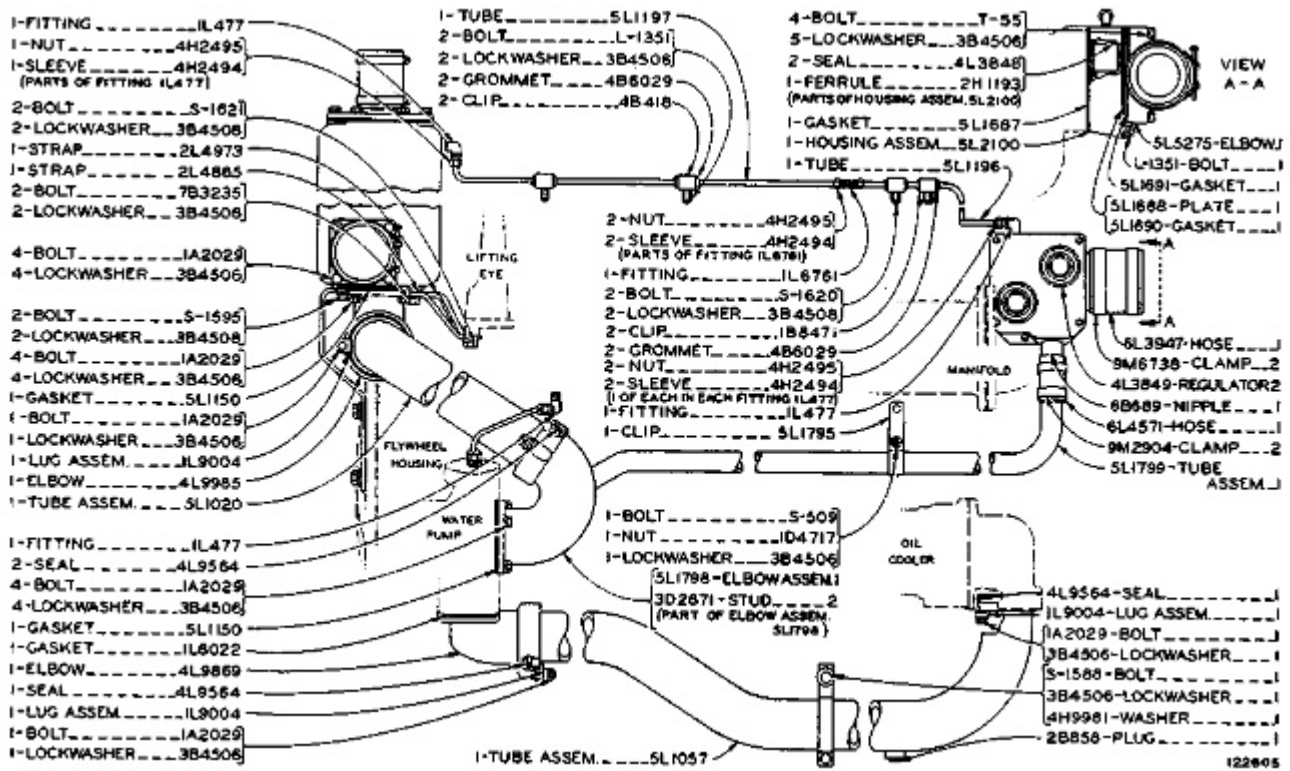
Ref. Qty.	NPR Note	Part No.	Part Name
Grp		8L-3922	ENGINE ARRANGEMENT

INDIVIDUAL PARTS

Ref. Qty.	NPR Note	Part No.	Req. Qty.	Part Name
	<u>NPR</u> Y	<u>4H-9984</u>	1	CAMSHAFT GROUP
	<u>NPR</u> Y	<u>5H-1113</u>	1	OIL FILTER GROUP
				- OR -
	<u>NPR</u> Y	<u>7N-1767</u>	1	OIL FILTER GROUP
	<u>NPR</u> Y	<u>5H-1117</u>	1	FUEL PUMP & GOVERNOR DRIVE GROUP
				- OR -
	<u>NPR</u> Y	<u>6N-0050</u>	1	FUEL PUMP & GOVERNOR DRIVE GROUP
	<u>NPR</u> Y	<u>5H-1429</u>	1	OIL PUMP DRIVE GROUP
	<u>NPR</u> Y	<u>6H-1672</u>	1	BREATHER GROUP
	<u>NPR</u> Y	<u>6H-6580</u>	1	IDLER GEAR GROUP
	<u>NPR</u> RY	<u>7H-3408</u>	1	CYLINDER HEAD & VALVE MECHANISM GROUP
R	<u>NPR</u>	<u>0R-2159</u>	1	HEAD GP-CYL -UTN
R	<u>NPR</u>	<u>0R-1406</u>	1	HEAD GP-CYL -A
	<u>NPR</u> Y	<u>2L-3512</u>	1	OIL PAN GROUP
	Y	<u>2L-6985</u>	1	FUEL FILTER GROUP
				- OR -
	<u>NPR</u> Y	<u>8L-4941</u>	1	FUEL FILTER GROUP
	<u>NPR</u> Y	<u>4L-8616</u>	1	SURGE TANK & WATER LINES GROUP
	Y	<u>8L-3926</u>	1	MANIFOLD GROUP
				- OR -
	Y	<u>1N-8267</u>	1	MANIFOLD GROUP
				- OR -
	<u>NPR</u> Y	<u>2N-8072</u>	1	MANIFOLD GROUP
	<u>NPR</u> Y	<u>4L-8619</u>	1	AFTERCOOLER GROUP
				- OR -
	<u>NPR</u> Y	<u>3N-2931</u>	1	AFTERCOOLER GROUP
	<u>NPR</u> Y	<u>4L-8625</u>	1	OIL COOLER GROUP
	<u>NPR</u> Y	<u>5L-1936</u>	1	WATER PUMP GROUP
				- OR -
	<u>NPR</u> RY	<u>2N-5649</u>	1	WATER PUMP GROUP
R	<u>NPR</u>	<u>0R-0805</u>	1	PUMP GP-WATER

Key:

R - REMFG PART MAY BE AVAILABLE
Y - SEPARATE ILLUSTRATION



GRAPHIC #1
c122605

D353E MARINE ENGINE

Media Number - UE034303-00 | Publication Date - 01/04/1984 | Date Updated - 11/11/2006

SURGE TANK AND WATER LINES--Side View--Part 1 of 2

Serial No. 47B409 to 47B1779 inclusive

Note: 6F6041 Rust Inhibitor is available. Refer also to Pages 70 through 73 and 78 for special parts

ENTIRE GROUP

Ref. Qty.	NPR Note	Part No.	Part Name
Grp			SURGE TANK AND WATER LINES

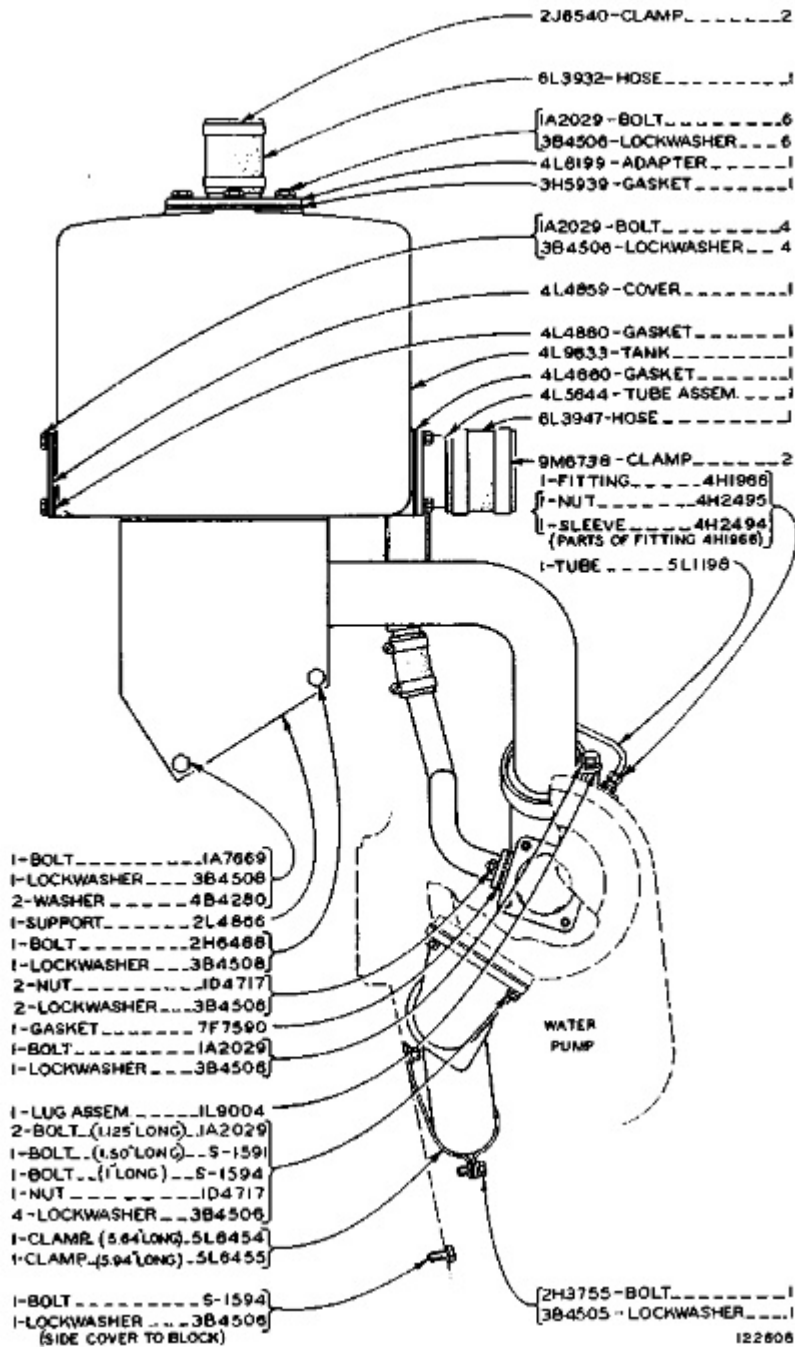
INDIVIDUAL PARTS

Ref. Qty.	NPR Note	Part No.	Req. Qty.	Part Name
	NPR	1L-0477	1	FITTING
	NPR	4H-2495	1	NUT
	NPR	4H-2494	1	SLEEVE (PARTS OF FITTING 1L477)
	NPR	0S-1621	2	BOLT
	NPR	3B-4508	2	LOCKWASHER
	NPR	2L-4973	1	STRAP
	NPR	2L-4865	1	STRAP
	NPR	7B-3235	2	BOLT
	NPR	3B-4508	2	LOCKWASHER
	NPR	1A-2029	4	BOLT

NPR	3B-4506	4	LOCKWASHER
NPR	0S-1595	2	BOLT
NPR	3B-4508	2	LOCKWASHER
NPR	1A-2029	4	BOLT
NPR	3B-4506	4	LOCKWASHER
NPR	5L-1150	1	GASKET
NPR	1A-2029	1	BOLT
NPR	3B-4506	1	LOCKWASHER
NPR	1L-9004	1	LUG ASSEM.
NPR	4L-9985	1	ELBOW
NPR	5L-1020	1	TUBE ASSEM.
NPR	1L-0477	1	FITTING
NPR	4L-9564	2	SEAL
NPR	1A-2029	4	BOLT
NPR	3B-4506	4	LOCKWASHER
NPR	5L-1150	1	GASKET
NPR	1L-8022	1	GASKET
NPR	4L-9869	1	ELBOW
NPR	4L-9564	1	SEAL
NPR	1L-9004	1	LUG ASSEM.
NPR	1A-2029	1	BOLT
NPR	3B-4506	1	LOCKWASHER
NPR	5L-1197	1	TUBE
NPR	0L-1351	2	BOLT
NPR	3B-4506	2	LOCKWASHER
NPR	4B-6029	2	GROMMET
NPR	4B-0418	2	CLIP
NPR	4H-2495	2	NUT
NPR	4H-2494	2	SLEEVE
			(PARTS OF FITTING 1L6761)
NPR	1L-6761	1	FITTING
NPR	0S-1620	2	BOLT
NPR	3B-4508	2	LOCKWASHER
NPR	1B-8471	2	CLIP
NPR	4B-6029	2	GROMMET
NPR	4H-2495	2	NUT
NPR	4H-2494	2	SLEEVE
			(1 OF EACH IN EACH FITTING 1L477)
NPR	1L-0477	1	FITTING
NPR	5L-1795	1	CLIP
NPR	0S-0509	1	BOLT
NPR	1D-4717	1	NUT
NPR	3B-4506	1	LOCKWASHER
NPR	5L-1798	1	ELBOW ASSEM.
NPR	3D-2871	2	STUD
			(PART OF ELBOW ASSEM. 5L1798)
NPR	5L-1057	1	TUBE ASSEM.
NPR	0T-0055	4	BOLT

<u>NPR</u>	3B-4506	5	LOCKWASHER
<u>NPR</u>	4L-3848	2	SEAL
<u>NPR</u>	2H-1193	1	FERRULE
			(PARTS OF HOUSING ASSEM. 5L2100)
<u>NPR</u>	5L-1687	1	GASKET
<u>NPR</u>	5L-2100	1	HOUSING ASSEM.
	5L-1196	1	TUBE
<u>NPR</u>	5L-5275	1	ELBOW
<u>NPR</u>	0L-1351	1	BOLT
<u>NPR</u>	5L-1691	1	GASKET
<u>NPR</u>	5L-1688	1	PLATE
<u>NPR</u>	5L-1690	1	GASKET
<u>NPR</u>	6L-3947	1	HOSE
<u>NPR</u>	9M-6738	2	CLAMP
<u>NPR</u>	4L-3849	2	REGULATOR
<u>NPR</u>	6B-0689	1	NIPPLE
<u>NPR</u>	6L-4571	1	HOSE
<u>NPR</u>	9M-2904	2	CLAMP
<u>NPR</u>	5L-1799	1	TUBE ASSEM.
<u>NPR</u>	4L-9564	1	SEAL
<u>NPR</u>	1L-9004	1	LUG ASSEM.
<u>NPR</u>	1A-2029	1	BOLT
<u>NPR</u>	3B-4506	1	LOCKWASHER
<u>NPR</u>	0S-1588	1	BOLT
<u>NPR</u>	3B-4506	1	LOCKWASHER
<u>NPR</u>	4H-9981	1	WASHER
<u>NPR</u>	2B-0858	1	PLUG

SMCS Codes



GRAPHIC #1
 c122606

D353E MARINE ENGINE

Media Number - UE034303-00 | Publication Date - 01/04/1984 | Date Updated - 11/11/2006

SURGE TANK AND WATER LINES--Front View--Part 2 of 2
 Serial No. 47B409 to 47B1779 inclusive

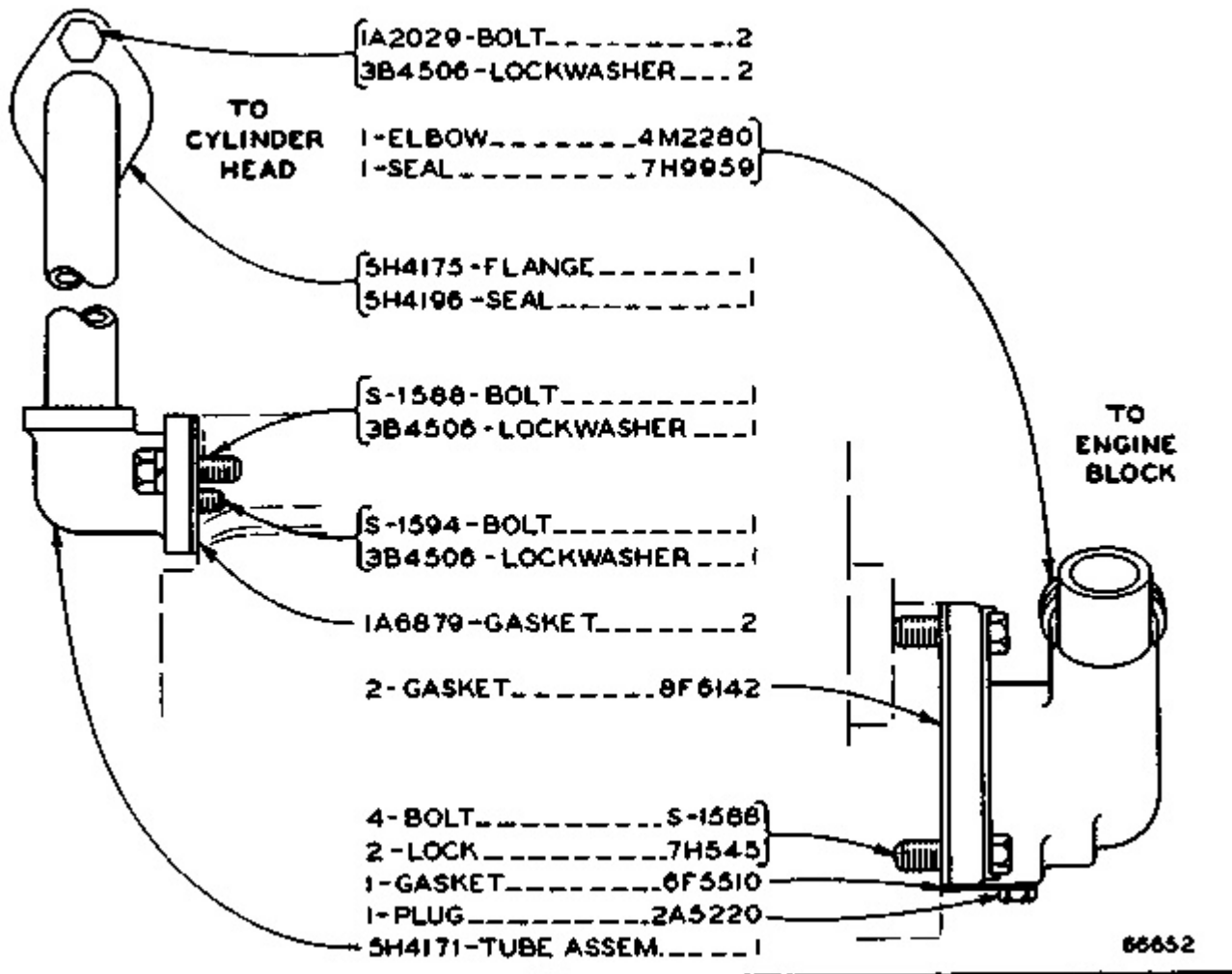
ENTIRE GROUP

Ref. Qty.	NPR Note	Part No.	Part Name
Grp			SURGE TANK AND WATER LINES

INDIVIDUAL PARTS

Ref. Qty.	NPR Note	Part No.	Req. Qty.	Part Name
	<u>NPR</u>	1A-7669	1	BOLT
	<u>NPR</u>	3B-4508	1	LOCKWASHER
	<u>NPR</u>	4B-4280	2	WASHER
	<u>NPR</u>	2L-4866	1	SUPPORT
	<u>NPR</u>	2H-6488	1	BOLT
	<u>NPR</u>	3B-4508	1	LOCKWASHER
	<u>NPR</u>	1D-4717	2	NUT
	<u>NPR</u>	3B-4506	2	LOCKWASHER
	<u>NPR</u>	7F-7590	1	GASKET
	<u>NPR</u>	1A-2029	1	BOLT
	<u>NPR</u>	3B-4506	1	LOCKWASHER
	<u>NPR</u>	1L-9004	1	LUG ASSEM.
	<u>NPR</u>	1A-2029	2	BOLT (1.125" LONG)
	<u>NPR</u>	0S-1591	1	BOLT (1.50" LONG)
	<u>NPR</u>	0S-1594	1	BOLT (1" LONG)
	<u>NPR</u>	1D-4717	1	NUT
	<u>NPR</u>	3B-4506	4	LOCKWASHER
	<u>NPR</u>	5L-6454	1	CLAMP (5.64" LONG)
	<u>NPR</u>	5L-6455	1	CLAMP (5.94" LONG)
	<u>NPR</u>	0S-1594	1	BOLT
	<u>NPR</u>	3B-4506	1	LOCKWASHER (SIDE COVER TO BLOCK)
		026-6540	2	CLAMP
	<u>NPR</u>	6L-3932	1	HOSE
	<u>NPR</u>	1A-2029	6	BOLT
	<u>NPR</u>	3B-4506	6	LOCKWASHER
	<u>NPR</u>	4L-8199	1	ADAPTER
	<u>NPR</u>	3H-5939	1	GASKET
	<u>NPR</u>	1A-2029	4	BOLT
	<u>NPR</u>	3B-4506	4	LOCKWASHER
	<u>NPR</u>	4L-4859	1	COVER
	<u>NPR</u>	4L-4860	1	GASKET
	<u>NPR</u>	4L-9633	1	TANK
	<u>NPR</u>	4L-4860	1	GASKET
	<u>NPR</u>	4L-5644	1	TUBE ASSEM.
	<u>NPR</u>	6L-3947	1	HOSE
	<u>NPR</u>	9M-6738	2	CLAMP
	<u>NPR</u>	4H-1966	1	FITTING
	<u>NPR</u>	4H-2495	1	NUT
	<u>NPR</u>	4H-2494	1	SLEEVE (PARTS OF FITTING 4H1966)
	<u>NPR</u>	5L-1198	1	TUBE
	<u>NPR</u>	2H-3755	1	BOLT
	<u>NPR</u>	3B-4505	1	LOCKWASHER

SMCS Codes



GRAPHIC #1
c66652

D353E MARINE ENGINE

Media Number - UE034303-00 | Publication Date - 01/04/1984 | Date
Updated - 11/11/2006

4M3304 WATER LINES GROUP

SERIAL NO. 47B409 TO 47B756 INCLUSIVE
PART OF 4L9844 GASOLINE STARTING ENGINE ARRANGEMENT
LISTED ON PAGE 45

ENTIRE GROUP

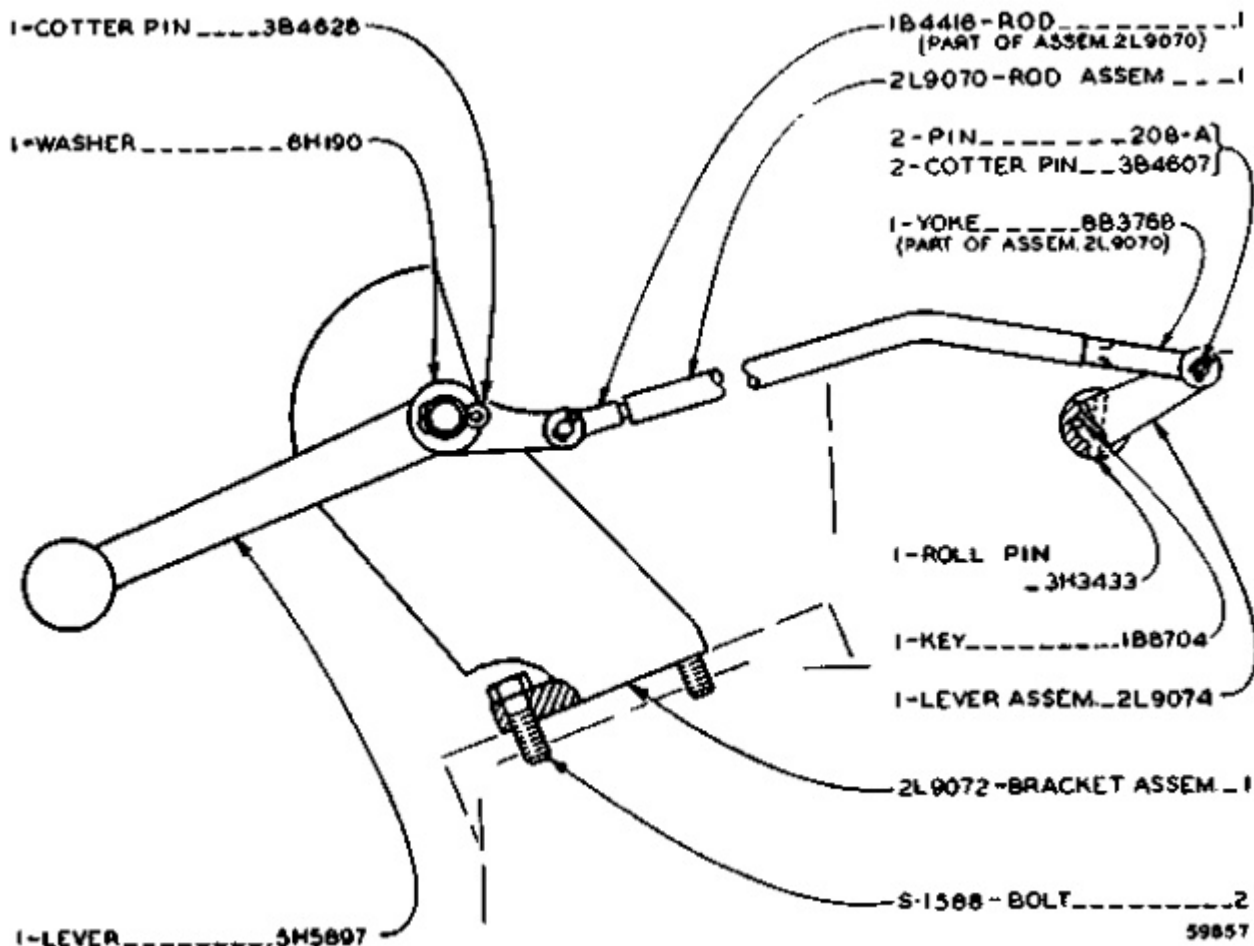
Ref.	Qty.	NPR Note	Part No.	Part Name
Grp		NPR	4M-3304	WATER LINES GROUP

INDIVIDUAL PARTS

Ref.	Qty.	NPR Note	Part No.	Req. Qty.	Part Name
		NPR	1A-2029	2	BOLT
		NPR	3B-4506	2	LOCKWASHER
		NPR	4M-2280	1	ELBOW
		NPR	7H-9959	1	SEAL
		NPR	5H-4175	1	FLANGE
		NPR	5H-4196	1	SEAL

<u>NPR</u>	0S-1588	1	BOLT
<u>NPR</u>	3B-4506	1	LOCKWASHER
<u>NPR</u>	0S-1594	1	BOLT
<u>NPR</u>	3B-4506	1	LOCKWASHER
<u>NPR</u>	1A-6879	2	GASKET
<u>NPR</u>	8F-6142	2	GASKET
<u>NPR</u>	0S-1588	4	BOLT
<u>NPR</u>	7H-0545	2	LOCK
<u>NPR</u>	6F-5510	1	GASKET
<u>NPR</u>	2A-5220	1	PLUG
<u>NPR</u>	5H-4171	1	TUBE ASSEM.

SMCS Codes		
1380		



GRAPHIC #1
c59857

D353E MARINE ENGINE

Media Number - UE034303-00 | Publication Date - 01/04/1984 | Date
Updated - 11/11/2006

**2L9069 COMPRESSION RELEASE CONTROL GROUP
PART OF 4L9844 GASOLINE STARTING ENGINE ARRANGEMENT
LISTED ON PAGE 45**

ENTIRE GROUP

Ref. Qty.	NPR Note	Part No.	Part Name
Grp	<u>NPR</u>	2L-9069	COMPRESSION RELEASE CONTROL GROUP

INDIVIDUAL PARTS

Ref. Qty.	NPR Note	Part No.	Req. Qty.	Part Name
	<u>NPR</u>	3B-4628	1	COTTER PIN
	<u>NPR</u>	6H-0190	1	WASHER
	<u>NPR</u>	5H-5897	1	LEVER
	<u>NPR</u>	1B-4416	1	ROD (PART OF ASSEM. 2L9070)
	<u>NPR</u>	2L-9070	1	ROD ASSEM.
		208A	2	PIN