

SCANIA

parts catalogue

Customized catalog for

DC14 62 A40D

Generator set

s/n 6504055

<http://engine.od.ua/Scania>

0 General

1 Engine

2 Cooling system

3 Fuel and exhaust system

4

5

6

7

8

9

10

11

12

13 Steering - Hydraulic pump

14 Engine controls

16 Electrics

17 Instruments

18

19

End of Warranty	2003-02-04	Installation	
Warranty information	Basic warranty is 12 months	-Code	
Start-up date	2002-02-04	-Type	GENSET LIMITED TIME
Delivery date	2002-01-07	-Name	
Invoice date	2002-01-04	-Number	
Assembly date	2002-01-01	Scania generator set	
Power standard	ISO 3046	Type designation	
Power (KW)	342	Order No Customer	A 01-0116
Power (HP)	465	Order No Factory	25798100
Power 110% (KW)	376	Order type	A
Power 110% (HP)	511	Order customer	
Power curve	LTP	-Country code & number	DE006
RPM	1500	-Name	AVS Aggregatebau
Speed droop	GEN	Distributor	
Classification code	Not prepared for classification	-Country code	DE
Classification society		-Number	001
Parts catalogue	18846	-Name	ScanDiesel GmbH Ermlandstrasse 55 D-28777 BREMEN GERMANY
TVC No		End user	KLEEMANN + REINER HILDENBRANDSTR. 18 D-73035 GÖPPINGEN GERMANY

TVC Date
00 General

Assembly level	Completely Build Up	Product class	Industrial and marine products
Development level	4	Engine assembly place	IME
Deviation specification	Without	Classification, prepared	No
Classification company	Without	Conservation	Without
Corrosion inhibitor	With	IMO certification	Without
SIS	Without	Installation instructions DEC2	Without
Operator's manual language	Without	Operator's man extra language	German
Operator's man third language	Without	Run-in time	0,5 hour

01 Engine

Alfa-angle	12°	Engine stroke volume	14
Engine type, industrial/marine	DC14 62A	Engine type designation D14A/M	DC14 62 A40D
Engine adaptation	Generator	Engine application	Industrial
Operation speed	1500	Engine rpm.	1500
Sensor tachometer	Without	Speed control, engine speed	4.5%
Engine colour	Orange (NCS 1080-Y80R)	Valve shaft sealing	Without
Crankcase ventilation, type	Closed	Crankcase ventilation, placing	Rocker cover
Crank shaft, connection	Cylindrical	Classification crankshaft	No
Flywheel	Flywheel SAE 14" coupling	Flywheel pilot hole	Diameter 80 mm
Flywheel housing with screw	Short	Flywheel housing material	Silumin
Flywheel housing conn.rear end	According to SAE1	Piston, make	Mahle
Piston, gallery cooled	With	Piston ring type	Keystone
Compression ring surface cond.	Molybdenum	Connection f conv.oil cool	Without
Oil cleaner placing	Front of engine block	Monitor lubrication oil press.	Without
Sensor/guard lubr.oil pressure	With	Oil filling	In valve cover
Oil filler, rocker cover	Third cylinder	Oil level check,running engine	Yes
Oil dipstick, placing	Right hand side	Oil drain	With pump
Oildraining placing	Right hand side	Oil pan	Truck type
Oil pan material	Aluminium	Exhaust pipe, direction	Upwards
Exhaust manifold, cooling	Not cooled	Exhaust manifold material	Sheet metal
Thermal shield, manifold pipe	Without	Turbocharger	With
Turbo chargers twin mounted	Without	Turbo charger position	Top assy
Turbo exhaust pipe	Bend adjustable 114-155	Turbo filter lube oil placing	Left side on intake manifold
Intake manifold direction	Forwards	Air cleaner safety filter	With

Air cleaner position	Over flywheel housing	Air cleaner engine, paper area	16 m ²
Precleaner air intake	With	Engine tilt angle,intermittent	Max 25 degrees
Engine susp. bracket front	Fixed, low -120 mm	Engine suspension bracket rear	Without
Rubber block front	Without	Rubber block rear	Without
Crankshaft damper	Without alfa reading	Protect.cover crankshaftdamper	Without
Surge damper	Without	Power take off engine side	Without
Power take off, fr. crankshaft	Without	Protection cover, belt drive	Without
Catwalk	Without		

02 Cooling system

Cooling system engine	Radiator	Radiator	With 1.0 m ²
Radiator suspension	Radiator suspension with	Charge air cooler	Air cooled
Charge air by-pass	Without	Fan, type	Pusher
Fan mounted on engine	With	Fan, moved forward placing	No
Fan, placing	On fan, bearing housing	Fan, diameter	912 mm
Fan, gear ratio	0.975:1	Coolant pump	With
Fan ring	With	Fan cover	With
Protection mesh fan	With	Thermostat housing, position	On cylinder head
Thermostat engine coolant	Disc	Pulley extra	Without
Belt stretcher 2 grooves	Without	Belt stretcher 3 groove	Without
Bilge pump	Without	Water pump extra	Without
Expansion tank	With	Guard/sensor coolant level	Without
Monitor coolant temperature	98 degrees 2-pole	Sensor coolant temperature	With
Engine heater, type	Without		

03 Fuel and exhaust systems

Fuel	Diesel	Governor, injec.pump, type	RQ
EDC Electronic diesel control	Without	Accelerator position sensor	Without
Fuel, pressure tube	Standard	Fuel filter, reversible	Without
Fuel filter, position	On left inlet manifold	Fuel heater	Without
Fuel cooler	Without	Monitor fuel leakage	Without
Exhaust pipe	With	Exhaust outlet direction	Left hand side
Exhaust flange, diameter	130	Exh.pipe compensator	Without
Silencer	Without	Rain protection cap	Without

04 Clutch

Reverse gear	Without	Clutch rear	Without
--------------	---------	-------------	---------

10 Pneumatic system

Compressor compressed air	Without	Exhaust brake	Without
---------------------------	---------	---------------	---------

13 Hydraulic pump

Hydraulic pump, steering gear	Without
-------------------------------	---------

14 Engine controls

Engine stop, ordinary	Without	Accelerator control	Electronic
-----------------------	---------	---------------------	------------

16 Electrical system

Electrical syst. SjöV classif.	Without	Generator	1-pole
Alternator charge	65 A	Alternator engine mounted	With
Alternators twin mounted	Without	Alternator charge placing	Above left
Starter, type	JE	Start engine	1-pole
Start engine	Electric	Engine starting aid device	Without
Cable harness engine	Without		

17 Instruments

Instruments	Without	Exhaust temperature gauge	Without
-------------	---------	---------------------------	---------

18 Canopy

Compressor A/C	Without	Air conditioning	Without
Auxiliary heating	Without		



SCANIA

Engine number : 6504055

Engine Type : DC 14 62 A 41 D

Local Modifications

00-00-0001 Consumables, []

No illustration intended for this section.

00-00-0001 Consumables, []
Footnote

Part numbers in this section can not be ordered from Scania. These part numbers are intended to be used locally by the workshop when building local menu prices containing consumable. The idea is that the local dealer system shall recognise the part numbers and thereby help the administration of cost, price and consumption.

Part no.	Description
1771732	Air cond. cleaning agent
1771733	Acetone
1771734	Antibact. fluid f climate ctrl
1771735	Antifreeze for washer fluid
1771736	Antifreeze glycol
1771737	Antifreeze glycol
1771738	Antifreeze glycol
1771739	Automatic transmission fluid
1771740	Automatic transmission fluid
1771746	Liquefied petroleum gas
1771747	Chassis grease
1771748	Part cleaning agent
1771749	Part cleaning agent
1771750	Part cleaning agent
1771751	Clutch fluid
1771752	Clutch fluid
1771753	Clutch fluid
1771754	Compressor oil
1771755	Refrigerant oil
1771756	Contact spray
1771757	Corrosion protection
1771758	Diesel
1771759	Disc brake lubricating grease
1771760	Engine cleaning agent
1771771	Liquid gasket
1771772	Window cleaner
1771773	Glass fibre
1771774	Glass fibre filler
1771775	Glue
1771776	Glue
1771777	Glue
1771778	Glue
1771779	Glue
1771780	Glue
1771781	Glue
1771782	Glue
1771783	Glue
1771784	Glue
1771786	Lubricating grease
1771787	Lubricating grease
1771788	Lubricating grease
1771789	Lubricating grease
1771790	Lubricating grease
1771791	Hydraulic oil
1771792	Hydraulic oil

00-00-0001 Consumables, []

Part no.	Description
1771793	Hydraulic oil
1771794	Hydraulic oil
1771795	Leak detection spray
1771796	Oil absorbent
1771797	Paint
1771798	Paint
1771799	Paint
1771800	Paint
1771801	Paint
1771802	Paint
1771803	Paint
1771804	Paint
1771805	Paint
1771806	Paint
1771807	Self hardening filler
1771808	Polishing wax
1771809	Polyester
1771810	Polyester hardener
1771811	Radiator sealing cement
1771812	Refrigerant
1771813	Refrigerant
1771814	Refrigerant
1771815	Wheel rim cleaning agent
1771816	Rape methyl ester
1771817	Sealant
1771818	Sealant
1771819	Sealant
1771820	Sealant
1771821	Sealant
1771822	Sealant
1771823	Sealant
1771824	Sealant
1771825	Sealant
1771826	Sealant
1771827	Silicone paste
1771828	Soldering paste
1771829	Thinner
1771830	Thinner
1771831	Thinner
1771832	Thinner
1771833	Thinner
1771834	Lubricating spray
1771835	Lubricating spray
1771836	Lubricating spray
1771837	Lubricating spray
1771838	Lubricating spray
1771839	Starter gas
1771840	Textile cleaning agent
1771846	Autowasher liquid



SCANIA

Engine number : 6504055

00-00-0001 Consumables, []

Part no.	Description
1771847	Vehicle shampoo

No illustration intended for this section.

00-00-0002 Consumables, []

Part no.	Remark	Description
561205	Heat resistant	Grease
1933409	100 gr o-ring cyl. liner	Glycerol
		O-ring
		Cylinder liner
2123827		Grease
2002537	225 g	Grease
		Rubber
2033249	50 ml	Sealant
		Rear wheel hub
1793205		Marking compound
2033697	130x20dm ³	Corrosion protection
2033698	250x20dm ³	Corrosion protection
2033699	50x1dm ³	Corrosion protection
2186291	5 L	Antifreeze glycol
2186292	20 L	Antifreeze glycol
2186293	210 L	Antifreeze glycol
2186294	1000 L	Antifreeze glycol
2117983	Injection system - gas.	Thread seal tape
2117984	Injection system - gas.	Thread sealant paste
2117989	Injection system - gas.	High temperature grease
2202123	1 L	Washer fluid
2202125	5 L	Washer fluid
2202127	25 L	Washer fluid
2202129	208 L	Washer fluid
2202130	1000 L	Washer fluid

Products affected in series

Truck						Bus					Engine (I&M)		
3	4	P	G	R	T	3	4	K	N	F	P93	P96	E2011
X	X	X	X	X	X	X	X	X	X	X	X	X	X

Miscellaneous: Applies to warm markets

Coolant Scania Ready Mix 35/65

Background

The coolant has several characteristics which are important for the operation of the cooling system

- Corrosion inhibitor
- Antifreeze
- Raised boiling point

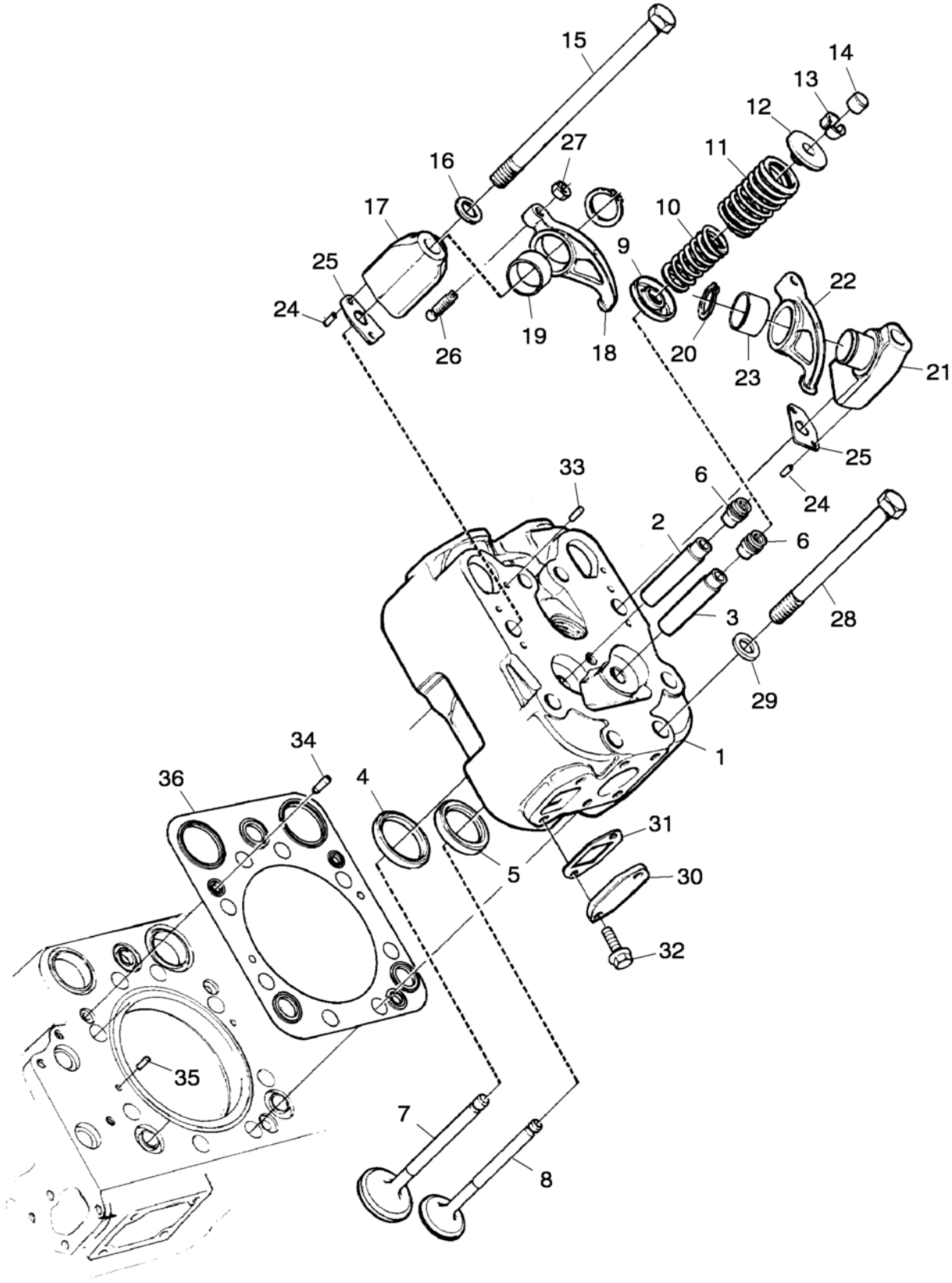
The coolant should always contain 35-55% by volume of antifreeze and corrosion inhibitor to ensure that the coolant works correctly.

Scania Ready Mix coolant is a pre-mixed coolant consisting of water, antifreeze (ethylene glycol) and corrosion inhibitor. In warm markets where there is no risk of freezing in the cooling system, the concentration of antifreeze and corrosion inhibitor (ethylene glycol) can be lower than in Scania Ready Mix 50/50. Scania Ready Mix 35/65 is being introduced for these markets. This means that the coolant contains 35% antifreeze and corrosion inhibitor (ethylene glycol) and 65% water.

Parts

Designation	Volume, litres	New part
Scania Ready Mix 35/65	5	2 186 291
Scania Ready Mix 35/65	20	2 186 292
Scania Ready Mix 35/65	210	2 186 293
Scania Ready Mix 35/65	1,000	2 186 294

01-01-0156 Cylinder head, []



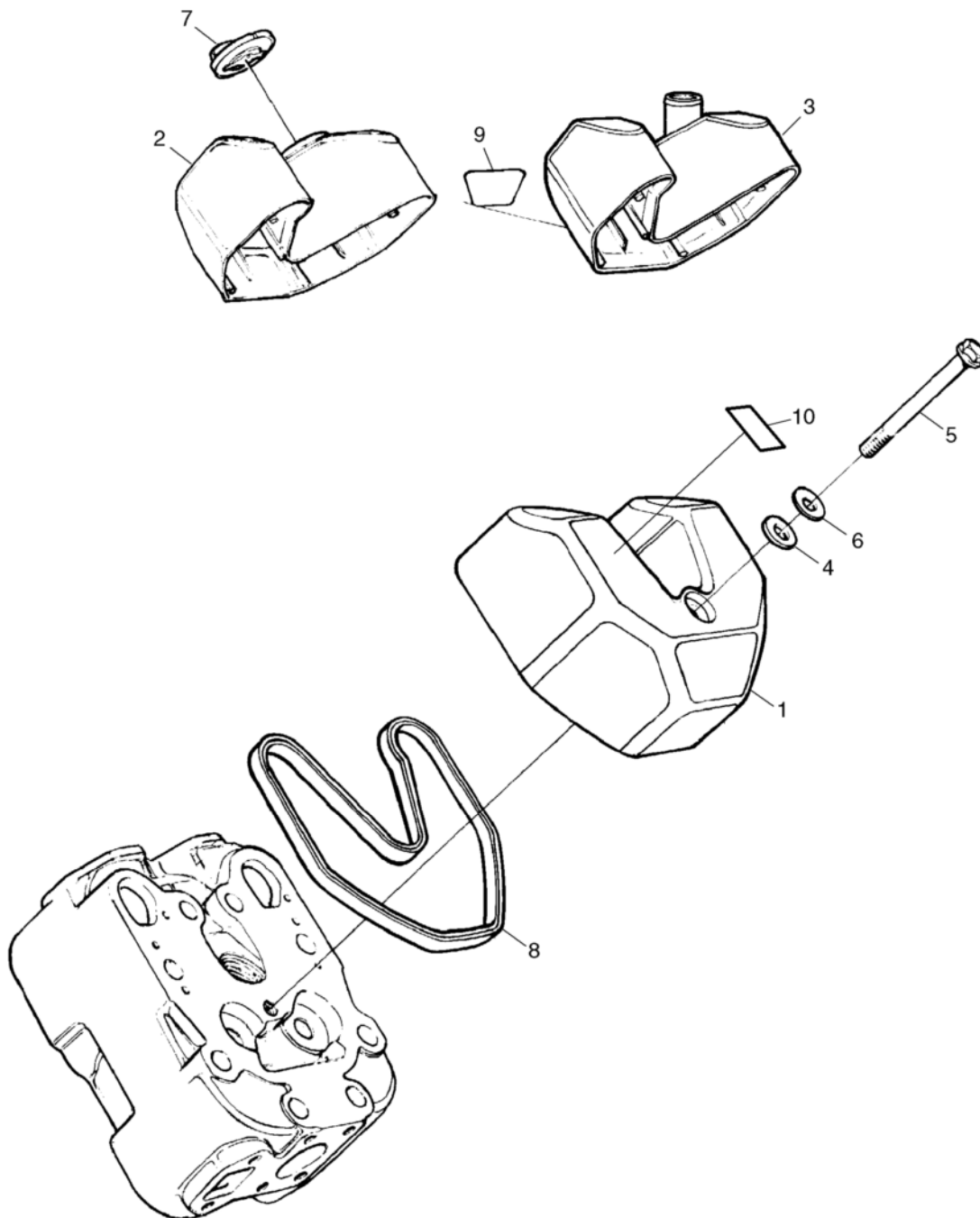
01-01-0156 Cylinder head, []

Pos.	Part no.	Remark	A	Description
1	1523420	X 397775	8	Cylinder head
	570080	570065	8	Cylinder head
2	1523410	300957	8	•Valve guide
				For cylinder head: 1 335 134
	1521210	393263	8	•Valve guide
				For cylinder head: 397 775
3	1521209	1398624 exhaust	8	•Valve guide
				For cylinder head: 1 335 134
	1521209	1398624 exhaust	8	•Valve guide
				For cylinder head: 397 775
4	289517	STD, intake	8	•Valve seat insert
	289518	osz 0.2 mm, intake	8	•Valve seat insert
5	372972	STD, exhaust	8	•Valve seat insert
	372973	osz 0.2 mm, exhaust	8	•Valve seat insert
6	1304293		8	Seal
				For cylinder head: 397 775
7	352211		8	Intake valve
8	1397521	1360834	8	Exhaust valve
9	1385563	170084	16	Valve spring collar
				Intake
10	1728922	170043	8	Valve spring
11	1728921	170042	8	Valve spring
12	1395189	170083	8	Valve spring collar
				Exhaust
10	1728922	170043	8	Valve spring
11	1728921	170042	8	Valve spring
12	1395189	170083	8	Valve spring collar
13	1501351	17113	32	Split collet
14	1371619		16	Valve stem cap
15	170057	M16x228	16	Screw
16	1103519	K	16	Washer
17	384433	intake	8	Bearing bracket
18	1102309		8	Rocker arm
19	1100675		8	•Bearing bush
20	804781	30x1,5x40,5	16	Retaining ring
21	384434	exhaust	8	Bearing bracket
22	1102308		8	Rocker arm
23	1100675		8	•Bearing bush
24	342341		32	Spiral pin
25	388422	K	16	Gasket
26	1481810	1408646 M10	16	Adjusting screw
27	394640	M10	16	Hexagon nut
28	170056	M16x160	48	Screw
29	157287	TH=4 mm	48	Washer

01-01-0156 Cylinder head, []

Pos.	Part no.	Remark	A	Description
30	372490		8	Cover
31	1445290	K 1392928	8	Gasket
32	812535	M10x22	16	Screw
33	804939	4x0,8x10	16	Pin
34	811791	8x0,67x20	16	Pin
35	804940	4x0,8x12	16	Pin
36	1403587	K 1313459	8	Cylinder head gasket
	551503	01-99-0201	8	Gasket kit
				Cylinder head

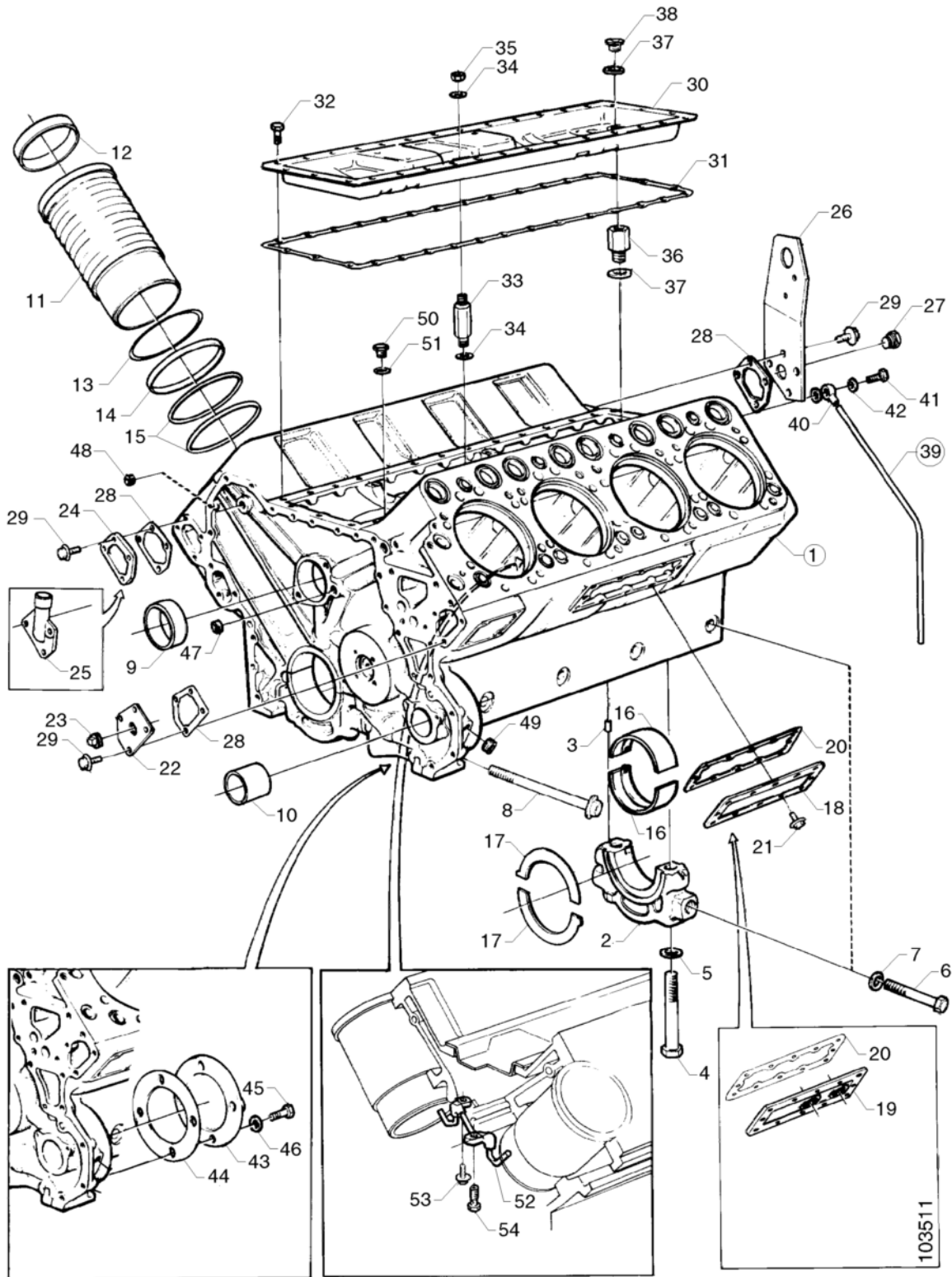
01-01-0631 Rocker cover, []



01-01-0631 Rocker cover, []

Pos.	Part no.	Remark	A	Description
1	170609		6	Rocker cover
2	320745		1	Rocker cover
3	1336211		1	Rocker cover
4	250608		8	Gasket
5	1328088	M10x107	8	Flange screw
6	250607		8	Washer
7	931106		1	Filler cap
8	1305959		8	Rocker cover gasket
9	1325380	DC/DSC14 62A, DI/DSI14 77A	1	Instruction plate
10		1588083	1	Plate
		Declaration of Incorp		

01-05-0156 Cylinder block, []



01-05-0156 Cylinder block, []

Pos.	Part no.	Remark	A	Description
1	1360233	assy	1	Cylinder block
2		nss	5	•Bearing cap
3	803466	8x20	5	•Pin
4	170227	M20x150	10	•Screw
5	170307		10	•Washer
6	1420090		9	•Screw
7	10297		9	•Washer
8	1420091	1348912	1	•Screw
9	322007	No.1, machined	1	•Bearing bush
	1368550	No.1, unmachined	1	•Bearing bush
	170071	No.2-6, unmachined	5	•Bearing bush
10	170582	unmachined	1	•Bearing bush
11	1103002	K assy	8	Cylinder liner
12	1101755	K	8	•Ring
13	312151	TH=0.20 mm	rq	Shim
	312152	TH=0.25 mm	rq	Shim
	312153	TH=0.30 mm	rq	Shim
	357775	TH=0.40 mm	rq	Shim
	312154	TH=0.50 mm	rq	Shim
	312155	TH=0.75 mm	rq	Shim
14	1302828	K	8	Sealing ring
15	1312934	K ø 140,5x4x148,5	16	O-ring
16	550490	STD 101.62 mm 2 x 302700	5	Bearing shell
	550481	usz1: 101.37 mm 2 x 358531	5	Bearing shell
	550482	usz2: 101.12 mm 2 x 358532	5	Bearing shell
	550483	usz3: 100.87 mm 2 x 358533	5	Bearing shell
	550484	usz4: 100.62 mm 2 x 358534	5	Bearing shell
	550485	usz5: 100.37 mm 2 x 358535	5	Bearing shell
	550486	usz6: 100.12 mm 2 x 358536	5	Bearing shell
17	255573	STD 3,429 mm	4	Thrust bearing
	255574	osz1: 3,505 mm	4	Thrust bearing
	255575	osz2: 3,556 mm	4	Thrust bearing
	255576	osz3: 3,683 mm	4	Thrust bearing
	255577	osz4: 3,937 mm	4	Thrust bearing
	255578	osz5: 4,318 mm	4	Thrust bearing
18	278519	RH	2	Side cover
19	332852		2	Side cover
				For engine heater
20	1392932	170694	2	Gasket
21	812516	M8x20	24	Flange screw
22	269728	DS/DSC14	1	Cover
23	125887	3/4 "-14 DS/DSC14	1	Screw plug
24	305656	DS/DSC14	1	Cover
25	1114602	DSI14	1	Flange

01-05-0156 Cylinder block, []

Pos.	Part no.	Remark	A	Description
26	1321885	LH	1	Lifting eye
	334619	RH	1	Lifting eye
	1379398	RH For DSI-engines with air intake mounted on intake manifold.	1	Lifting eye
	1359864	DI14 81A	1	Lifting eye
27	813209	M26x1.5Kx14,5	1	Screw plug
	812376	M22x1.5x9 DI14 81A	1	Screw plug
	812418	ø 22,2x26,9x1,5 DI14 81A	1	Gasket
28	1392933	170696	4	Gasket
29	812535	M10x22 DS/DSC14	16	Screw
	812535	M10x22 DSI14	14	Screw
	812536	M10x25 DSI14	2	Flange screw
30	170701		1	Cover plate
31	1338860		1	Gasket
32	812534	M10x20	25	Flange screw
33	170789		1	Union
34	170809		2	Gasket
35	815140	M16x1.5	1	Hexagon nut
36	170790		1	Union
37	170810		2	Gasket
38	170791		1	Banjo screw
39	331156	L=500 mm	1	Tube
40	812403	ø 10 mm	1	•Banjo union
41	812390	ø 10 M14x1,5	1	Banjo screw
42	237976		2	Gasket
43	170371		1	Cover
44	371497		1	Gasket
45	815048	M12x30	4	Screw
	814843	M12x45 PTO SAE B	4	Hexagon screw
				With side-mounted PTO
	814840	M12x30 PTO SAE B/C	4	Hexagon screw
				With side-mounted PTO
46	807311	13x24x2	4	Washer
				With side-mounted PTO
47	170407	NPTF 1/2"-14	2	Screw plug
48	211646	NPTF 3/8"-18	4	Screw plug
49	170602	NPTF 1/4"-18	3	Screw plug
50	812373	M16x1.5x9	2	Screw plug
51	812415	ø 16,2x19,9x1,5	2	Gasket
52	395463		4	Piston cooling nozzle
53	812518	M8x25	4	Flange screw
54	2107866	339840	4	Banjo screw
	551553	01-99-0000	8	Repair kit
				Piston and cylinder liner

Products affected in series

Truck						Bus					Engine (I&M)		
3	4	P	G	R	T	3	4	K	N	F	P93	P96	E2011
X	X	X	X	X	X	X	X	X	X	X	X	X	X

Miscellaneous:

Marking of reconditioned cylinder block

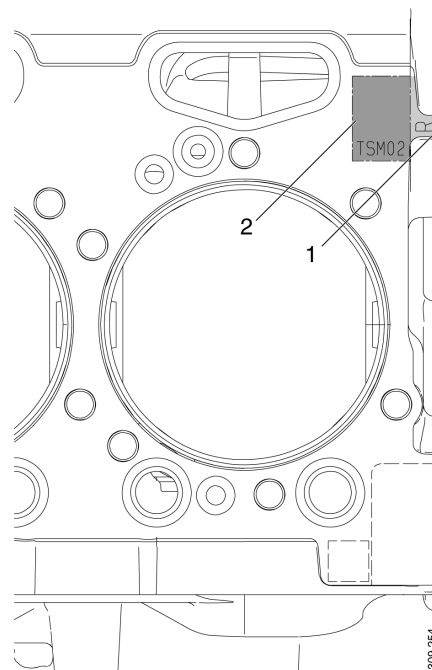
Background

Engines are reconditioned both by Scania and other workshops. In order to indicate what has been reconditioned in an engine, the cylinder block must be marked after reconditioning. When the cylinder block has been marked, it is easier for a workshop to source the correct part during repair work on a reconditioned engine.

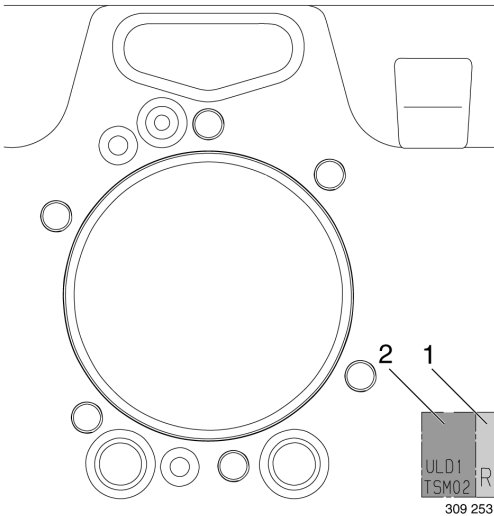
Marking of cylinder block

Field 1: Mandatory R to signify a reconditioned engine.

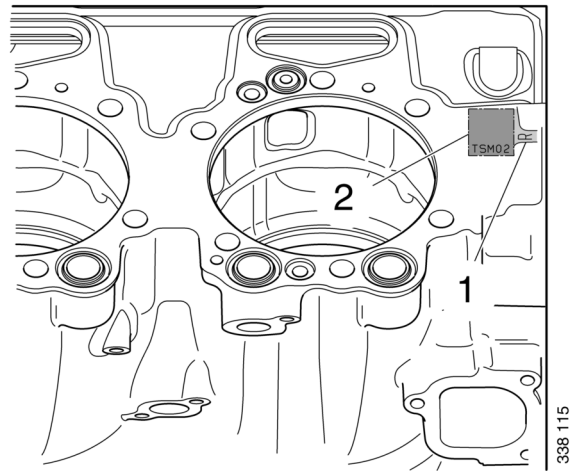
Field 2: Shows actions that were taken during reconditioning according to the table on the next page.



The location of the marking by the first cylinder on straight engines



The location of the marking by the first cylinder on 16 litre engines



The location of the marking by the first cylinders on 16 litre XPI engines

Codes for completed actions:

A*	B**	C***	Code	Action
X	X	X	TSM02	Cylinder head skimmed by 0.2 mm
X	-	X	ULD1	Upper liner seat diameter machined to 151 mm
X	X	X	SHM02	0.2 mm shim used to adjust liner height
X	X	X	SHM03	0.3 mm shim used to adjust liner height
X	X	X	SHM04	0.4 mm shim used to adjust liner height
X	X	X	GDP08	Guide pin hole adjusted to 8.8 mm in diameter
X	-	X	ULD05	Upper liner seat diameter machined to 150.5 mm
X	-	X	ULD15	Upper liner seat diameter machined to 151.5 mm
X	X	X	ULD20	Upper liner seat diameter machined to 152 mm

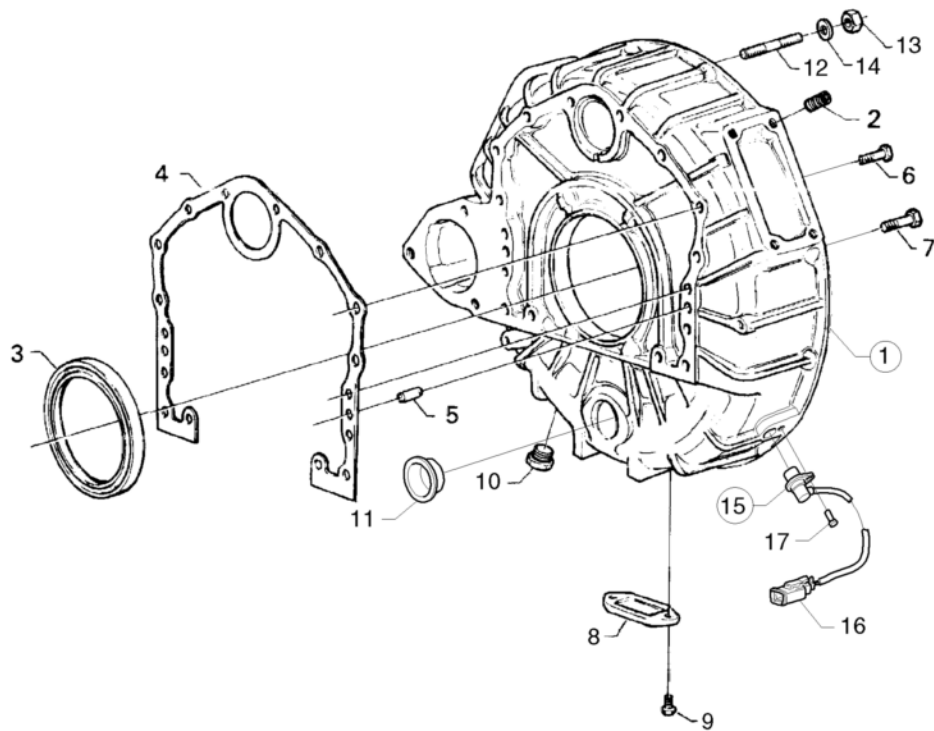
* 11 and 12 litre engines manufactured BEFORE September 2006 and 9 litre engines manufactured BEFORE September 2007.

** 11 and 12 litre engines manufactured AFTER September 2006 and 9 and 13 litre engines manufactured AFTER September 2007.

*** 16 litre engines.

Note:

The measurement of the thickest shim in the engine determines the marking for the cylinder block.

01-05-0871 Flywheel housing, Silumin, []

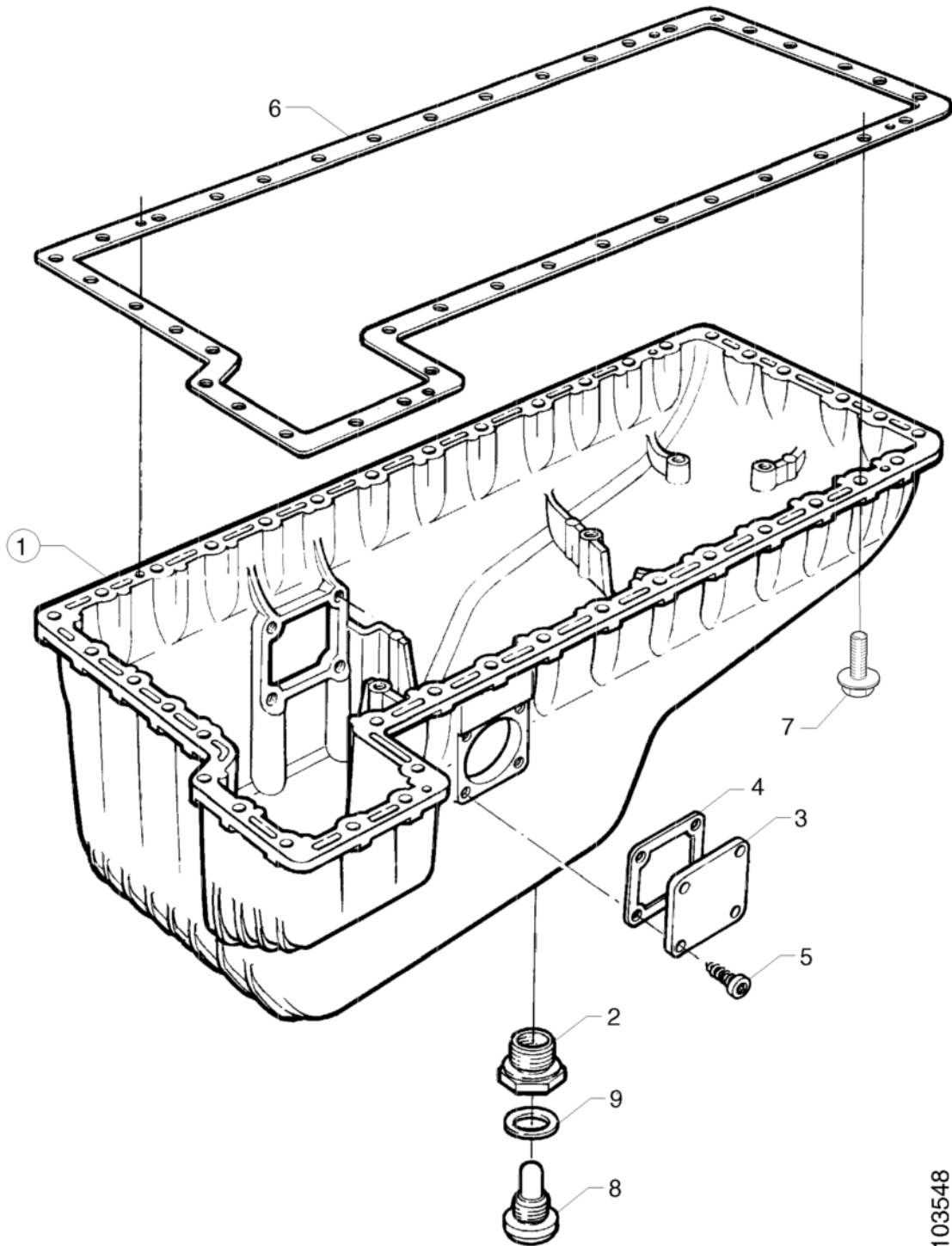
103544

01-05-0871 Flywheel housing, Silumin, []

Pos.	Part no.	Remark	A	Description
1	1390390	assy	1	Flywheel housing
2	348380		8	•Thread insert
3	369478		1	Shaft seal
4	1392935	371499	1	Gasket
5	803515	12x30	2	Pin
6	815050	M12x40	8	Flange screw
7	815052	M12x50	8	Flange screw
8	16022		1	Cover
9	812997	M8x16	2	Self-tapping screw
10	1300635		1	Plug
11	813163	ø41,4x44,6x42,8x39,8	1	Plug
12	800610	M10x50	12	Stud
13	815133	M10	12	Flange nut
14	803000	10,5x18x2	12	Washer
15	1394589	assy	1	Rotational speed sensor
16	1342963	2-pol	1	•Contact housing
	1347492	2-pol	1	•Wedge lock
	1361118	0,82-1,31 m ² gold	2	•Cable terminal, round socket
17	812987	M6x12	1	Self-tapping screw



01-05-1171 Oil sump, []

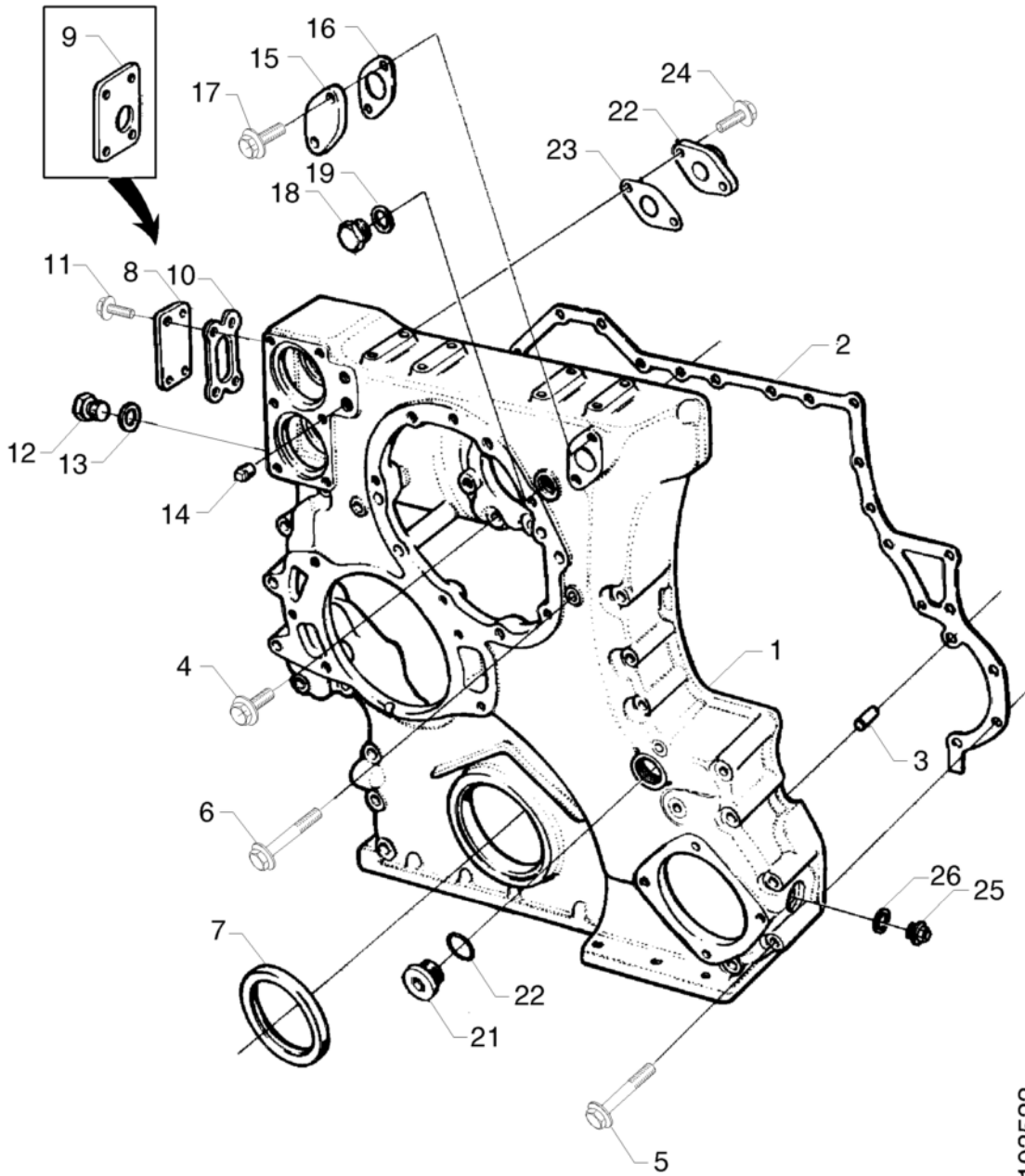


103548

01-05-1171 Oil sump, []
Footnote Oil sump with deep front.

Pos.	Part no.	Remark	A	Description
1	1360060		1	Oil sump
2	180435	M24xM30	1	•Thread insert
3	324737		1	Cover
4	1320292	K	1	Gasket
5	813000	M8x30	4	Self-tapping screw
6	1459004	K 371505	1	Gasket
7	812537	M10x30	40	Flange screw
8	1433641	1423608	1	Magnetic plug
9	1439814	K 1423610 24,2 x 4,2	1	Sealing washer
	551365	01-99-0296	1	Gasket kit
				Oil sump

01-05-0476 Timing gear casing, []



103522

01-05-0476 Timing gear casing, []

Qty A
 B DS/DSC14
 C DSI14

Pos.	Part no.	Remark	A	B	C	Description
1	1101530		1			Timing gear casing
2	1392934	371498	1			Gasket
3	803515	12x30	2			Pin
4	812535	M10x22	3			Screw
5	1390092	M10x95	16			Flange screw
6	1360987	M10x110	5			Flange screw
7	369477		1			Shaft seal
8	312079			1		Cover
9	1123248				1	Cover
10	1363029		1			Gasket
11	812516	M8x20	4			Flange screw
12	812372	M14x1.5x9	3			Screw plug
13	303098	14,2x19,9x1,5	3			Gasket
14	124446	1/2 "-14	2			Screw plug
15	205576		1			Cover
16	170916		1			Gasket
17	812534	M10x20	2			Flange screw
18	812374	M18x1.5x9	1			Screw plug
19	812416	ø 18,2x21,9x1,5	1			Gasket
20	1342956	M44x1.5	1			Screw plug
21	1332304		1			Gasket
22	208309	RH		1		Flange
23	170367			1		Gasket
24	812535	M10x22		2		Screw
25	168342	M22	1			Screw plug
26	241057		1			Gasket
		When there is no compressor. 01-05-0000	1			Cover
		When there is no fan. 02-00-0000	1			Cover
		When there is no hydraulic pump. 13-00-0000	1			Cover