



**D 2842**  
**LZE**

**5530242 / 000002**



# Spare parts

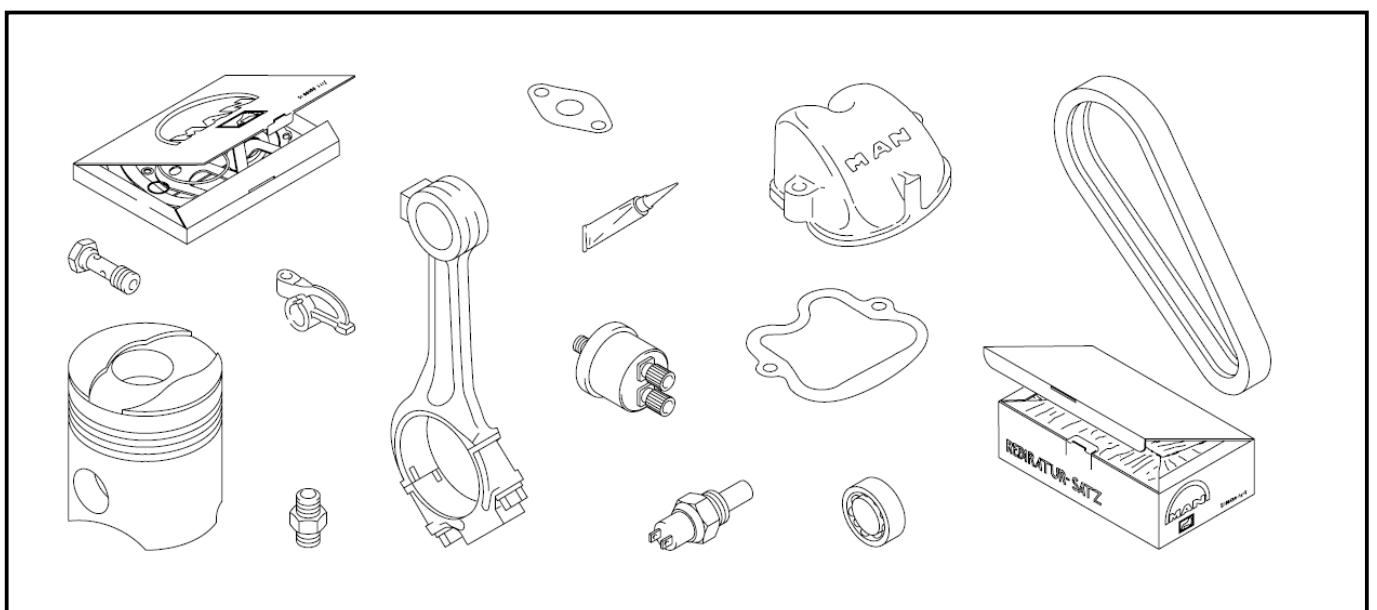


## Diesel engine

# D 2842 LZE

Order number

5530242 / 000002





The right to make technical changes as the result of developments is reserved.

© 1995 MAN

Reprinting, duplication or translation of this text, in part or in whole, is not permitted without the written permission of MAN. All rights in accordance with the copyright act are expressly reserved by MAN.

## TABLE OF CONTENTS

IMPORTANT NOTE	II
ENGINE NUMBERS	III
INTRODUCTION	IV
LIST OF TEXT TABLES	V
SUMMARY OF SALES GROUPS	VI
CATALOGUE	1



## **IMPORTANT NOTE**

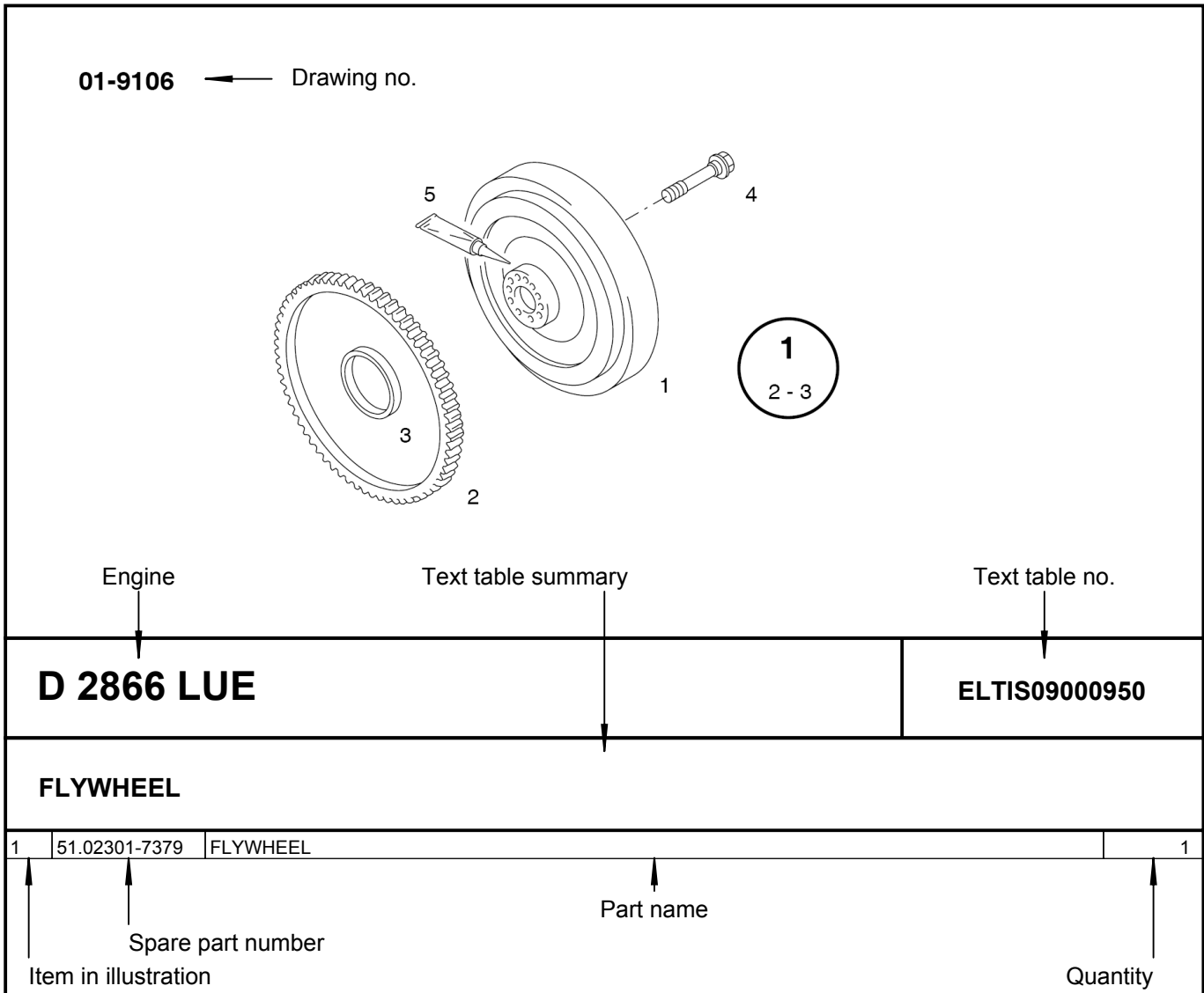
This catalogue is an exclusive edition for MAN engines, with the order number given at the bottom of each page. It is therefore in the owner's interest that it is kept in good condition. Spare parts for the engines in question can only be ordered using this catalogue. For this reason it is not permitted, even when using MAN's customer service, to keep the catalogue handy and supply the complete information for use when re-selling the engine. If any additional copies are required, these can be obtained on a spare parts basis. The order number for the catalogue is the same as the order number according to the purchase agreement for the engine.



## ENGINE NUMBERS

This catalogue contains the spare parts for the following orders and engine numbers:

Order number	Engine number	Frame number
5530242 000002	7006453110A301	



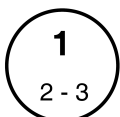
V-GR.:51.#0310-0101

← Sales group numbers

This spare parts catalogue is divided into function groups and text tables. The text tables show the contents of the sales groups.

In order to aid clarity, larger sales groups are divided into several function groups and text tables.

Quoting the sales group number in written correspondence and on the telephone speeds up processing.



Parts listed under 2 to 3 are also included in the scope of delivery for the part number under 1. These parts can also be ordered individually.

**When ordering spare parts, make sure you provide the following information:**

- o Engine type, engine no. and the order number according to engine type plate. Follow the instructions in the instruction manual (type plate).
- o Note repair stages.
- o Name of the spare part: Spare part number, name, quantity required.
- o Required dispatch method: Postal package, freight, express, special delivery, airfreight, etc.
- o Addressee's precise address.



# LIST OF TEXT TABLES



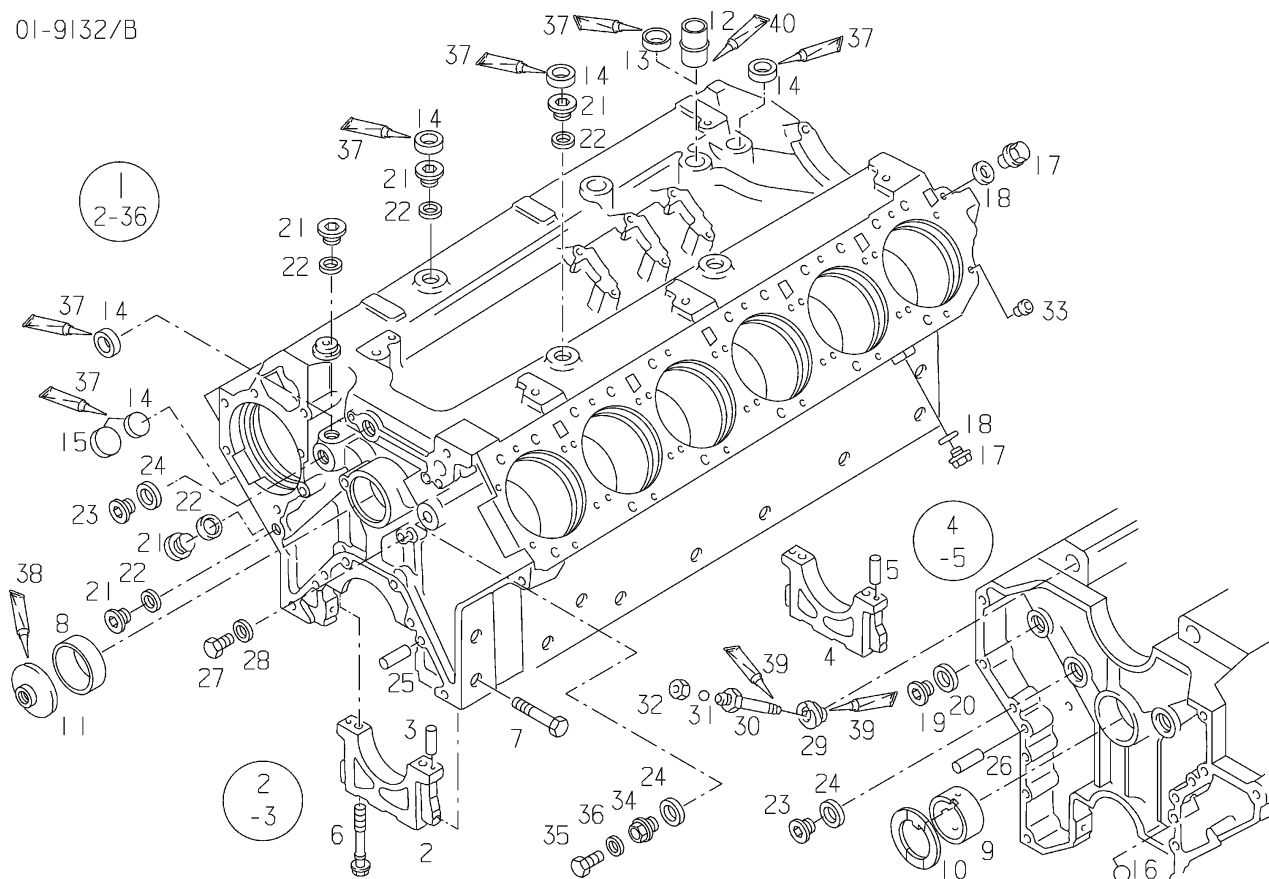
TABLE NUMBER	TEXT TABLE CONTENT	SEITE
#000001000004	CRANKCASE	1
ELTIS01040110	CRANKCASE BLEEDER	2
#000001000006	CRANKCASE FRONT COVER	3
ELTIS01010050	CYLINDER LINER COVER	4
ELTIS01010010	MITRE GEAR	5
ELTIS01010030	OIL SPRAYER NOZZLE	6
#027001000009	TIMING CASE	7
ELTIS01060010	TIMING CASE MOUNTING PARTS	8
ELTIS02060030	CONNECTING ROD CONROD BEARING	9
ELTIS02060020	PISTON COMPLETE	10
ELTIS02060020	PISTON COMPLETE	11
ELTIS02005010	TIMING GEAR - CRANKSHAFT BEARING	12
ELTIS02010020	VIBRATION DAMPER	13
ELTIS03000010	CYLINDER HEAD	14
ELTIS03020020	CYLINDER HEAD BOLT CYLINDER HEAD GASKET	15
ELTIS03030300	OIL FILLER COVER	16
#000004000001	VALVE CONNECTION PUSH ROD	17
ELTIS04050020	VALVES	18
ELTIS27020090	CONNECTING PARTS OIL SUPPLY	19
ELTIS05000030	OIL PUMP	20
#013005002620	OIL SUMP	21
#012005001150	TWIN OIL FILTER INSTALLATION	22
ELTIS05050010	TWIN OIL FILTER WITHOUT CHANGE-OVER COMPONENTS	23
ELTIS06000010	COOLANT PUMP	24
ELTIS08080030	EXHAUST ELBOW	25
ELTIS08010030	INTAKE MANIFOLD	26
ELTIS08060050	PLUGGING PARTS	27
ELTIS10000020	NOZZLE HOLDER NOZZLE	28
ELTIS11010120	INJECTION PUMP	29
ELTIS11000190	OIL RETURN PIPE	30
ELTIS17000060	ENGINE MOUNTING	31
ELTIS26030020	STARTER	32
ELTIS27010100	LEVEL MONITOR COOLING WATER	34
#061027000001	OIL PRESSURE CONTROL	35
ELTIS27020150	OIL PRESSURE SENDER	36
ELTIS38005010	RAW WATER PUMP DRIVE	37
ELTIS38005030	RAW WATER PUMP POWER TAKE-OFF WITH COMPONENTS	38
ELTIS99099980	INSTRUCTION PLATES	39
ELTIS99000050	SET OF GASKETS FOR ENGINE	40



## SUMMARY OF SALES GROUPS

Sales group no.	CONTENT OF SALES GROUPS	SEITE
51.#0000-0700	INTERCHANGEABLE PARTS D2842 LXE/LYE/LZE/LE400/01 / 02/06/08	1, 3, 4, 5, 8, 9, 11, 12, 13, 14, 15, 16, 17, 18, 30, 39, 40
51.#0020-0759	INJECTION PUMP WITH LDA 2300 U/MIN VARIABLE	28, 29
51.#0050-0122	STARTER 24V/6,6KW INSULATED + CONNECTOR 48	32
51.#0080-0255	VARIANT PARTS D2866 LU01 LOW-LOADING ARTIC	6, 10
51.#0110-0177	FOR WET AIR FILTER + AIR CLEANER DELETION	2, 26
51.#0120-0083	OIL FILTER WITHOUT CHANGE-OVER ON ENGINE INSTALLED	19, 22, 23
51.#0130-0125	OIL SUMP DEEP OIL DIPSTICK RIGHT / LEFT	20, 21
51.#0140-0415	HEAT EXCHANGER WITH EXHAUST SYSTEM WATER COOLED	24
51.#0160-0138	EXHAUST SYSTEM WATER COOLED	27
51.#0270-0046	TIMING CASE FOR POWER TAKE-OFF	7
51.#0360-0206	DRIVE FOR RAW WATER PUMP ONLY IKEGAI	37, 38
51.#0410-0262	ENGINE MOUNTING GS 900/50.	31
51.#0450-0094	EXHAUST ELBOW WITH EXHAUST SYSTEM WATER COOLED ( NOT INSTALLED )	25
51.#0600-0102	LEVEL MONITOR FOR COOLING WATER 2 PIN	34
51.#0610-0031	OIL PRESSURE CONTROL	35
51.#0730-0033	OIL PRESSURE SENDER 2 PIN	36

01-9132/B



## D 2842 LZE

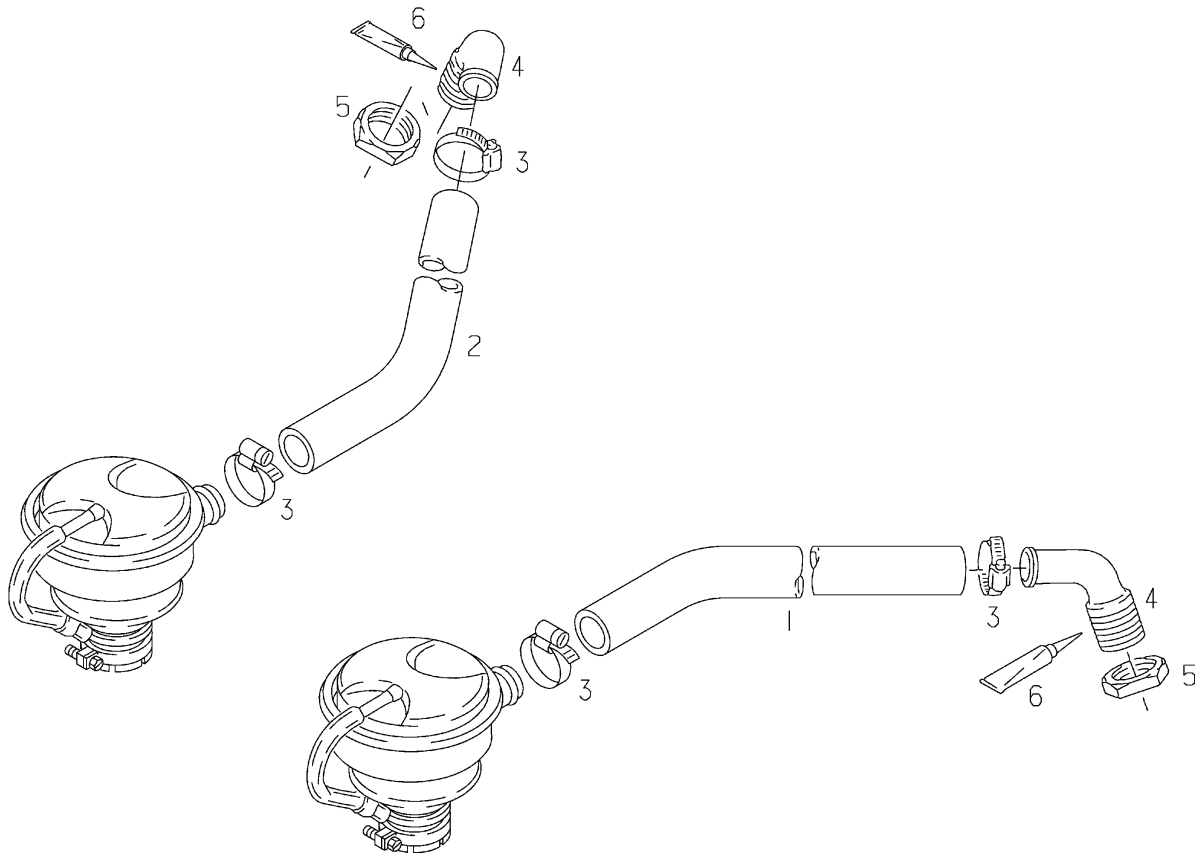
#000001000004

### CRANKCASE

		REPLACED BY	*
1	51.01100-6164	CRANKCASE 12-CYLINDER ENGINES ASSEMBLY REPLACEMENT GROUP	1
-	06.08099-0019	DRAIN PLUG AM22X1,5-ST-MAN183-B1	1
-	06.56631-0110	SEAL 22,7X30X2-ST/FPM1-80 WITH ELASTOMER LIP	1
-	-	OR OPTIONAL	*
14	51.91606-0049	COVER A36,2/10-X5CRNI1810N	12

V-GR.: 51.#0000-0700

01-9147



**D 2842 LZE**

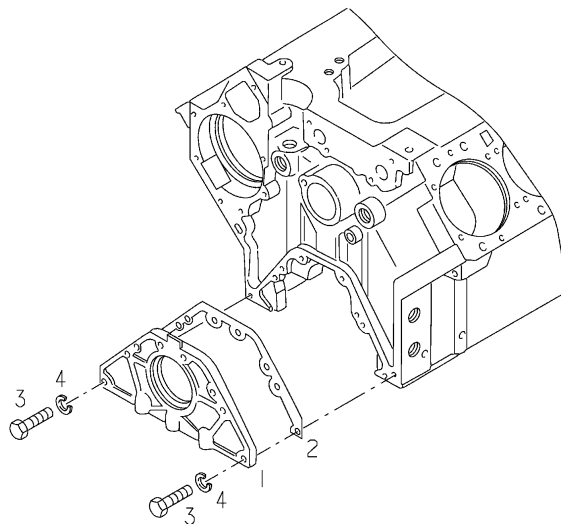
**ELTIS01040110**

**CRANKCASE BLEEDER**

3	06.67128-0313	HOSE CLAMP AS32-39	4
4	51.54120-0270	INTAKE MANIFOLD	2
7	-	DELETED	*
8	-	DELETED	*
9	-	DELETED	*
10	-	DELETED	*
11	-	DELETED	*
12	-	DELETED	*
13	-	DELETED	*

V-GR.: 51.#0110-0177

01-9226



**D 2842 LZE**

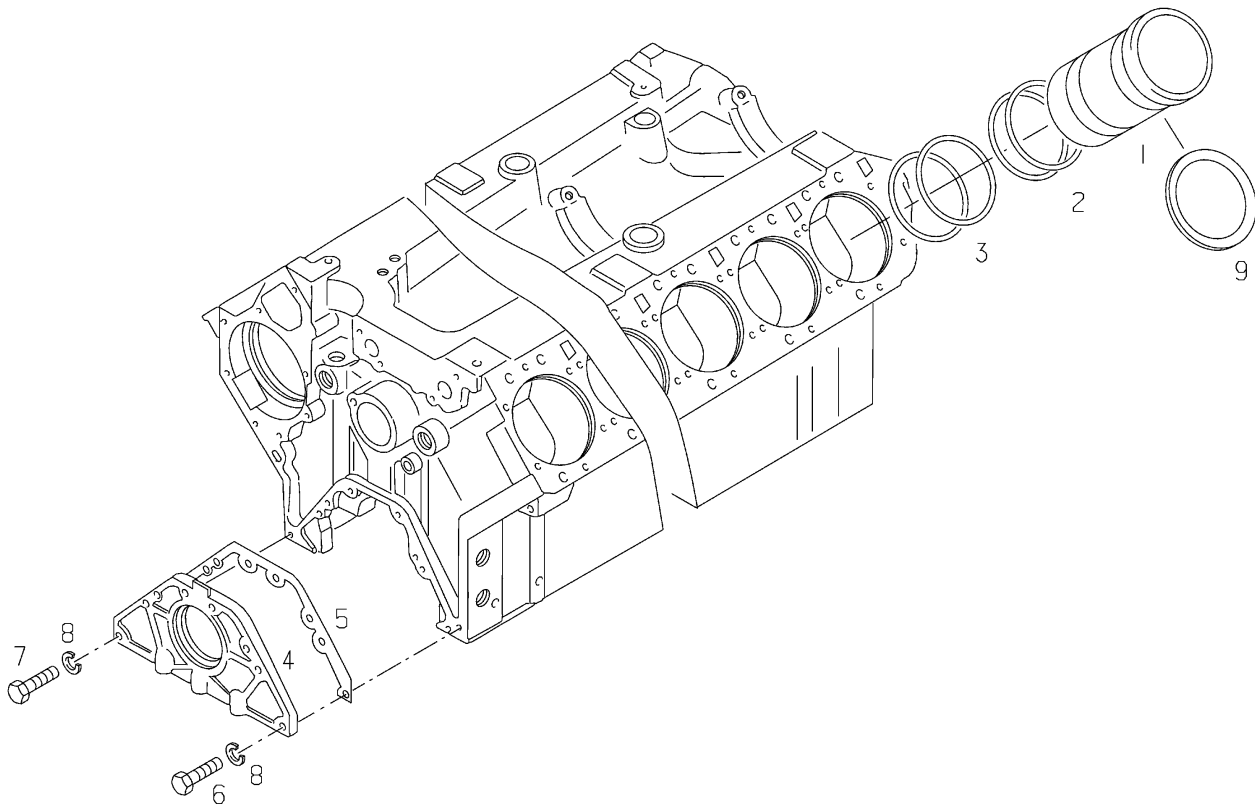
**#000001000006**

**CRANKCASE FRONT COVER**

-	51.01510-6004	RADIAL SHAFT SEAL 105X130X12RD-ACM/PTFE/FILZ ASSEMBLY	1
-	51.02130-0032	RACE DIAMETER 100,00	1
2	51.01903-0251	GASKET ASBESTOS-FREE	1
4	06.16043-0210	SPRING WASHER B8-FST-A3C	6

V-GR.: 51.#0000-0700

01-9134



**D 2842 LZE**

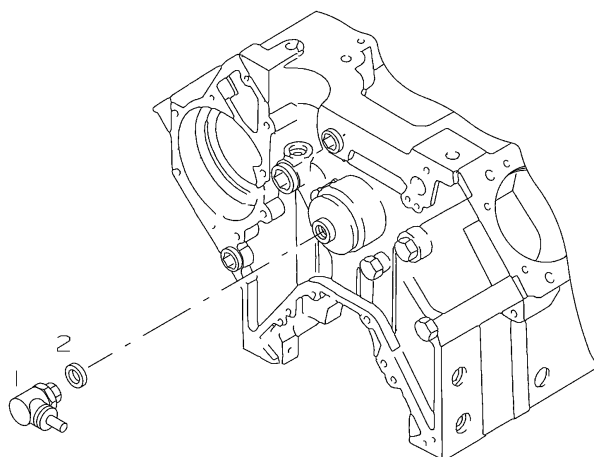
**ELTIS01010050**

**CYLINDER LINER COVER**

1	51.01201-0305	CYLINDER LINER NORMAL COLLAR HEIGHT 10,05 MM	12
1	51.01201-0342	CYLINDER LINER HEIGHT: + 0,2	12
1	51.01201-0306	CYLINDER LINER OVERSIZE DIAMETER 0.50 MM OUTSIDE DIAMETER	12
1	51.01201-0307	CYLINDER LINER OVERSIZE DIAMETER 1.00 MM OUTSIDE DIAMETER	12
2	51.96501-0493	TORIC SEAL 138X2,1-FPM2-70	24
3	51.96501-0522	TORIC SEAL 144X4-FPM2-70	24
4	51.01501-6017	FRONT COVER ASSEMBLY	1
5	51.01903-0251	GASKET ASBESTOS-FREE	1
6	06.01283-5115	HEX BOLT M8X25-8.8-MAN183-B1	4
7	06.01283-5117	HEX BOLT M8X30-8.8-MAN183-B1	2
8	06.16043-0210	SPRING WASHER B8-FST-A3C	6
9	51.01222-0002	SHIM 147,5X153,8X0,05-X12CRNI177 FOR BUSHES	2

V-GR.: 51.#0000-0700

01-9142



**D 2842 LZE**

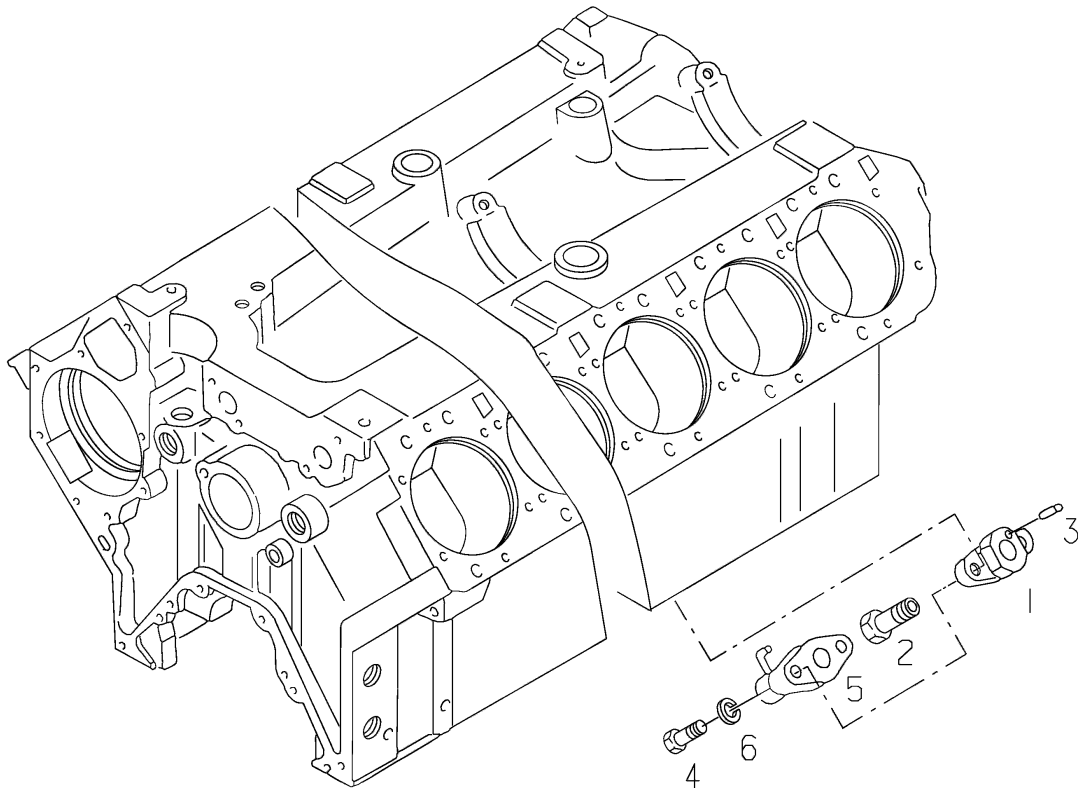
**ELTIS01010010**

**MITRE GEAR**

1	51.27120-7013	MITRE GEAR	1
2	06.56190-0719	SEAL A22X29-CU	1

V-GR.: 51.#0000-0700

01-9133/B



**D 2842 LZE**

**ELTIS01010030**

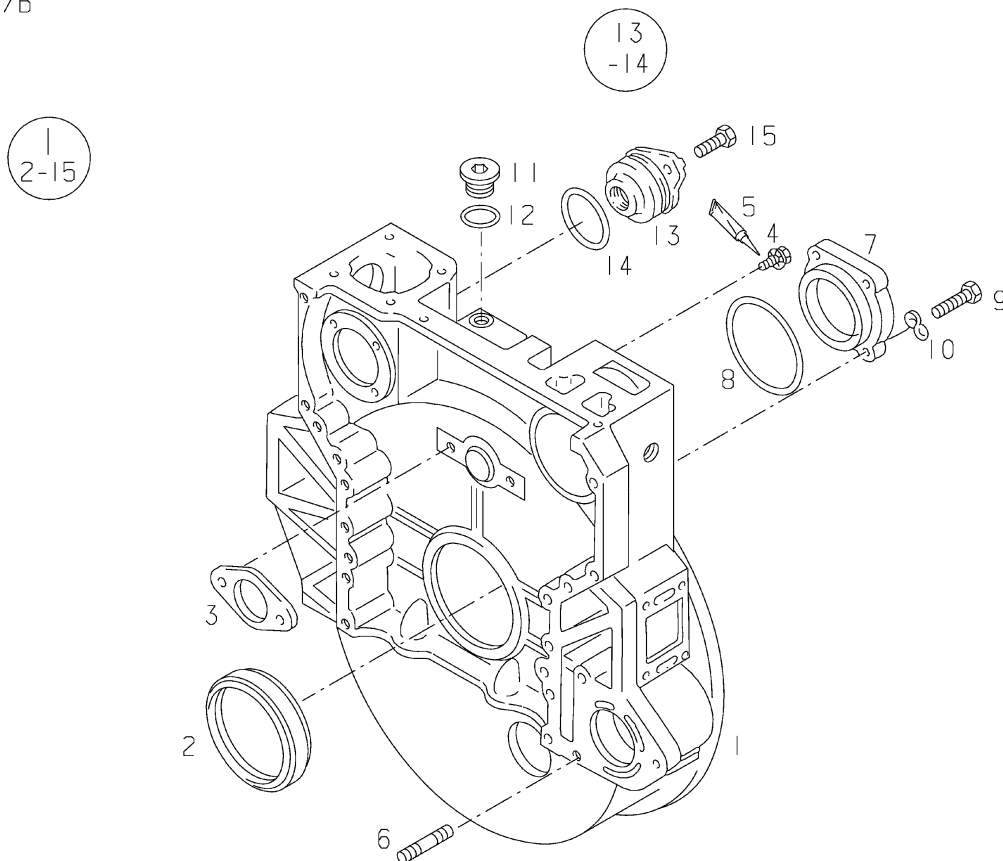
**OIL SPRAYER NOZZLE**

1	51.01601-0007	FLANGE	12
-	51.96601-0387	GASKET ASBESTOS-FREE	12
2	51.98150-0051	HOLLOW SCREW M14X1,5X38-92MNPB28K-SW19	12
3	06.22220-0804	SPIRAL DOWEL PIN 3,5X8-ST	12
4	06.56190-0706	SEAL A14X20-CU	12
5	51.01601-5073	OIL SPRAYER NOZZLE	12
6	06.16043-0208	SPRING WASHER B6-FST-A3C	24
7	06.01284-4915	HEX BOLT M6X25-10.9-MAN183-B1	24

V-GR.: 51.#0080-0255



01-9136/B



## D 2842 LZE

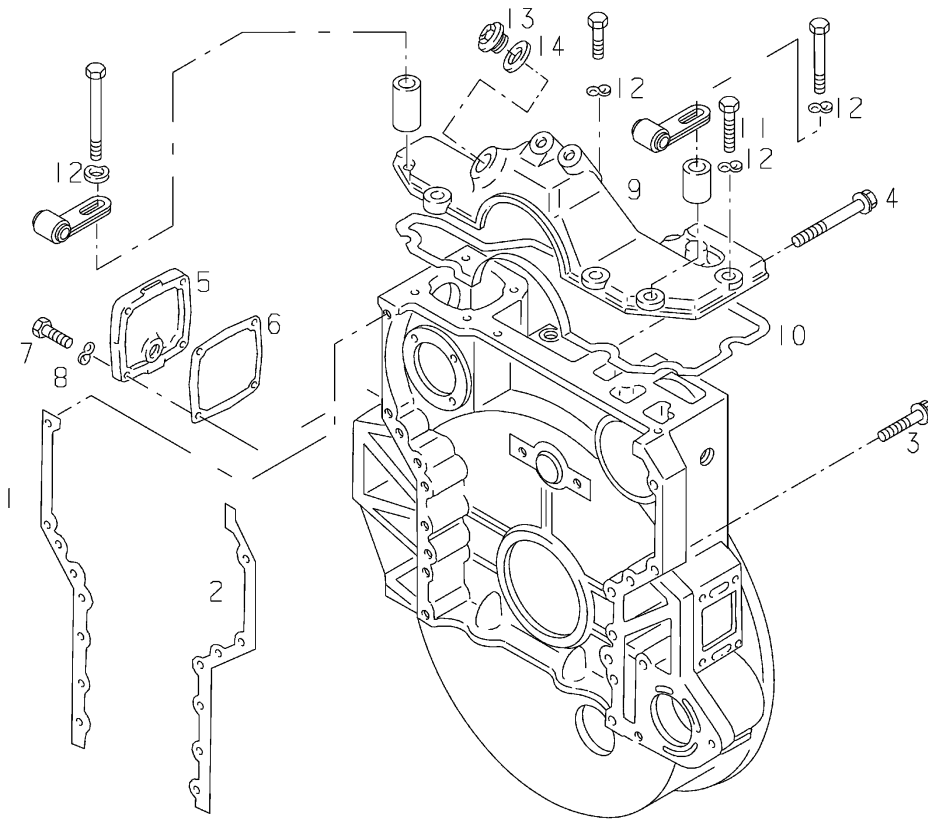
#027001000009

### TIMING CASE

1	51.01401-6137	TIMING CASE ASSEMBLY	1
2	51.01510-0206	RADIAL SHAFT SEAL 120X140X13-ACM/PTFE	1
3	51.90720-0200	THRUST WASHER	1
5	04.10160-9164	ADHESIVE 50 ML BOTTLE	1
6	06.06145-0308	STUD M12-M12X1,5X30-8.8	3
8	51.96501-0262	TORIC SEAL 92X3-FPM1-70-GN	1
9	06.01284-3117	HEX BOLT M8X30-10.9-MAN183-A2C	5
10	06.16739-0014	SPRING WASHER A8-MAN183-B1	5
11	06.08042-0609	DRAIN PLUG M26X1,5-ST-A3C	2
12	06.56190-0726	SEAL A26X31-CU	2
13	51.54130-5003	RIVETTED FLANGE	1
14	51.96501-0415	TORIC SEAL 78X3-FPM1-60-GN	1
15	06.01283-5215	HEX BOLT M10X25-8.8-MAN183-B1	2

V-GR.: 51.#0270-0046

01-9137



**D 2842 LZE**

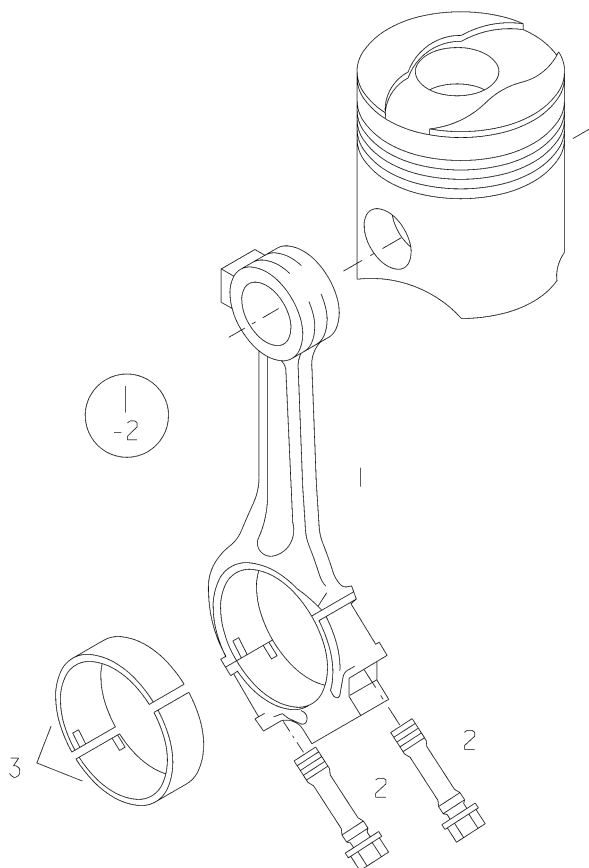
**ELTIS01060010**

**TIMING CASE MOUNTING PARTS**

1	51.01903-0249	GASKET ASBESTOS-FREE	1
2	51.01903-0250	GASKET ASBESTOS-FREE	1
3	51.90020-0258	DODECAGON COLLAR SCREW M12X1,5X57-12.9	10
4	51.90020-0183	HEX COLLAR BOLT M10X164-12.9	2
5	51.01402-0044	COVER	1
6	51.01903-0247	GASKET ASBESTOS-FREE	1
7	06.01283-5117	HEX BOLT M8X30-8.8-MAN183-B1	4
8	06.16043-0210	SPRING WASHER B8-FST-A3C	4
9	51.01402-0043	COVER	1
10	51.01903-0166	GASKET ASBESTOS-FREE	1
11	06.01284-3117	HEX BOLT M8X30-10.9-MAN183-A2C	5
12	06.16043-0210	SPRING WASHER B8-FST-A3C	8
13	51.98130-0412	REDUCING UNION	1
14	06.56200-0701	SEAL A38X44-CU	1

V-GR.: 51.#0000-0700

02-9098



**D 2842 LZE**

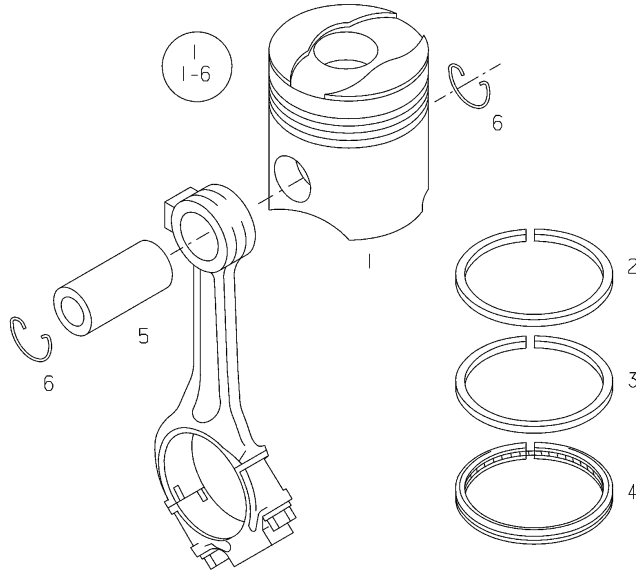
**ELTIS02060030**

**CONNECTING ROD CONROD BEARING**

1	51.02401-6234	CONNECTING ROD ASSEMBLY	12
2	51.90020-0139	ELONGATING HEX COLLAR BOLT M16X1,5X67,5-10.9-PHR	24
3	51.02410-6488	CONROD BEARING NORMAL ASSEMBLY SPUTTERED	12
3	51.02410-6515	CONROD BEARING NORMAL 1 = 0,10 MM ASSEMBLY SPUTTERED	12
3	51.02410-6516	CONROD BEARING REPAIR STAGE 1 = 0,25 MM ASSEMBLY SPUTTERED	12
3	51.02410-6517	CONROD BEARING REPAIR STAGE 2 = 0,50 MM ASSEMBLY SPUTTERED	12
3	51.02410-6518	CONROD BEARING REPAIR STAGE 3 = 0,75 MM ASSEMBLY SPUTTERED	12
3	51.02410-6519	CONROD BEARING REPAIR STAGE 4 = 1,00 MM ASSEMBLY SPUTTERED	12

V-GR.: 51.#0000-0700

02-9097



**D 2842 LZE**

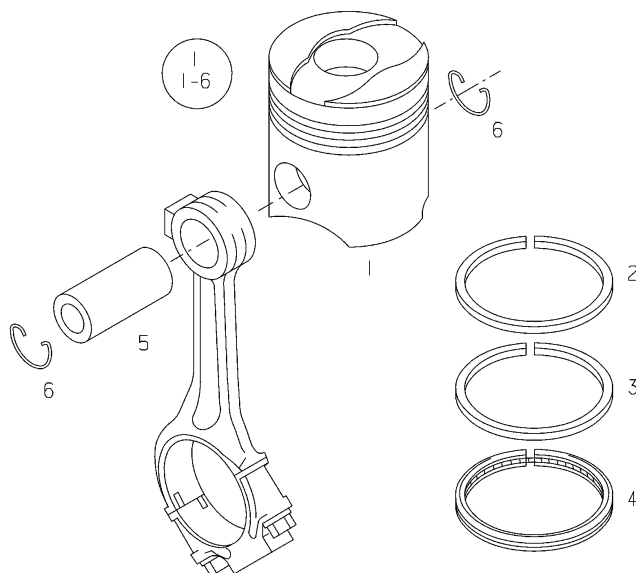
**ELTIS02060020**

**PISTON COMPLETE**

3	51.02503-0661	TAPER FACE SCRAPER RING 128/117,6 X 3	12
4	51.02503-0651	BEVELLED OIL SCRAPER RING WITH SPRING EXPANDER 128,00 MM	12
5	51.02502-0098	PISTON PIN	12
6	51.90810-0011	CIRCLIP 52X1,75-FST	24

V-GR.: 51.#0080-0255

02-9097



**D 2842 LZE**

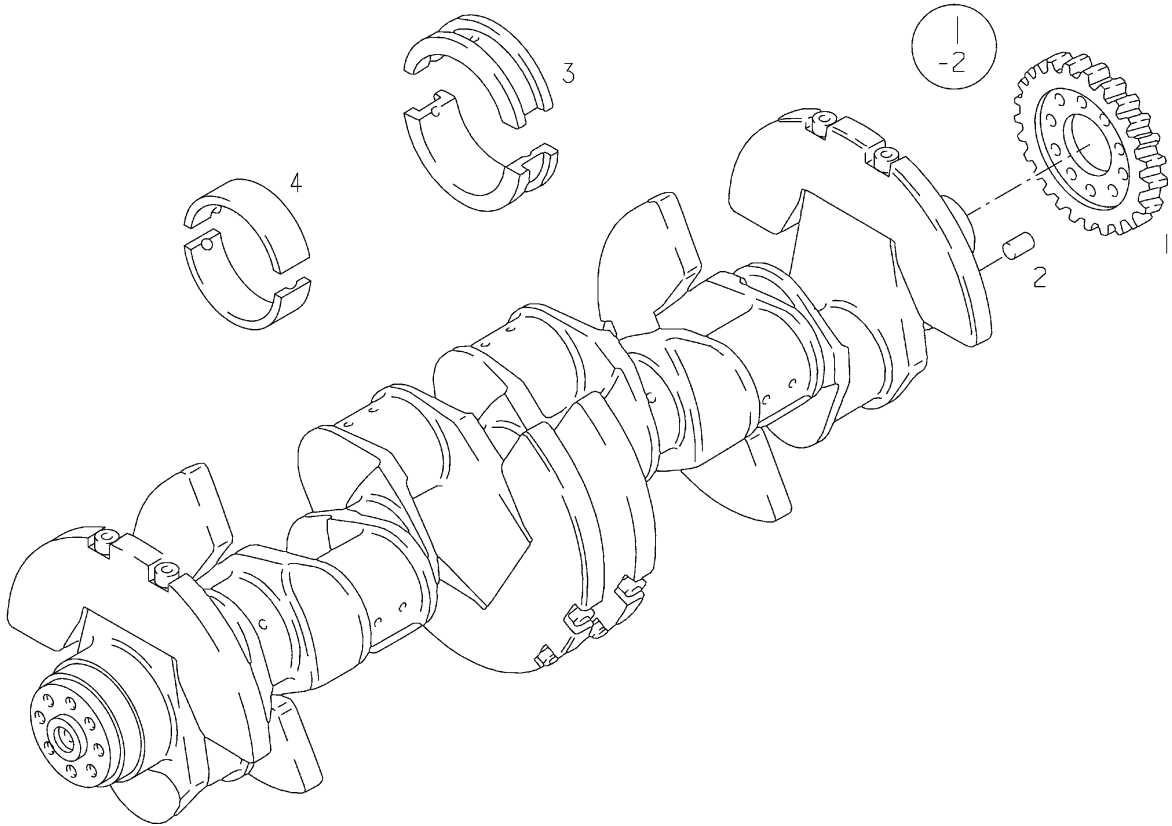
**ELTIS02060020**

**PISTON COMPLETE**

3	51.02503-0661	TAPER FACE SCRAPER RING 128/117,6 X 3	12
4	51.02503-0651	BEVELLED OIL SCRAPER RING WITH SPRING EXPANDER 128,00 MM	12
5	51.02502-0098	PISTON PIN	12
6	51.90810-0011	CIRCLIP 52X1,75-FST	24

V-GR.: 51.#0000-0700

02-9109



**D 2842 LZE**

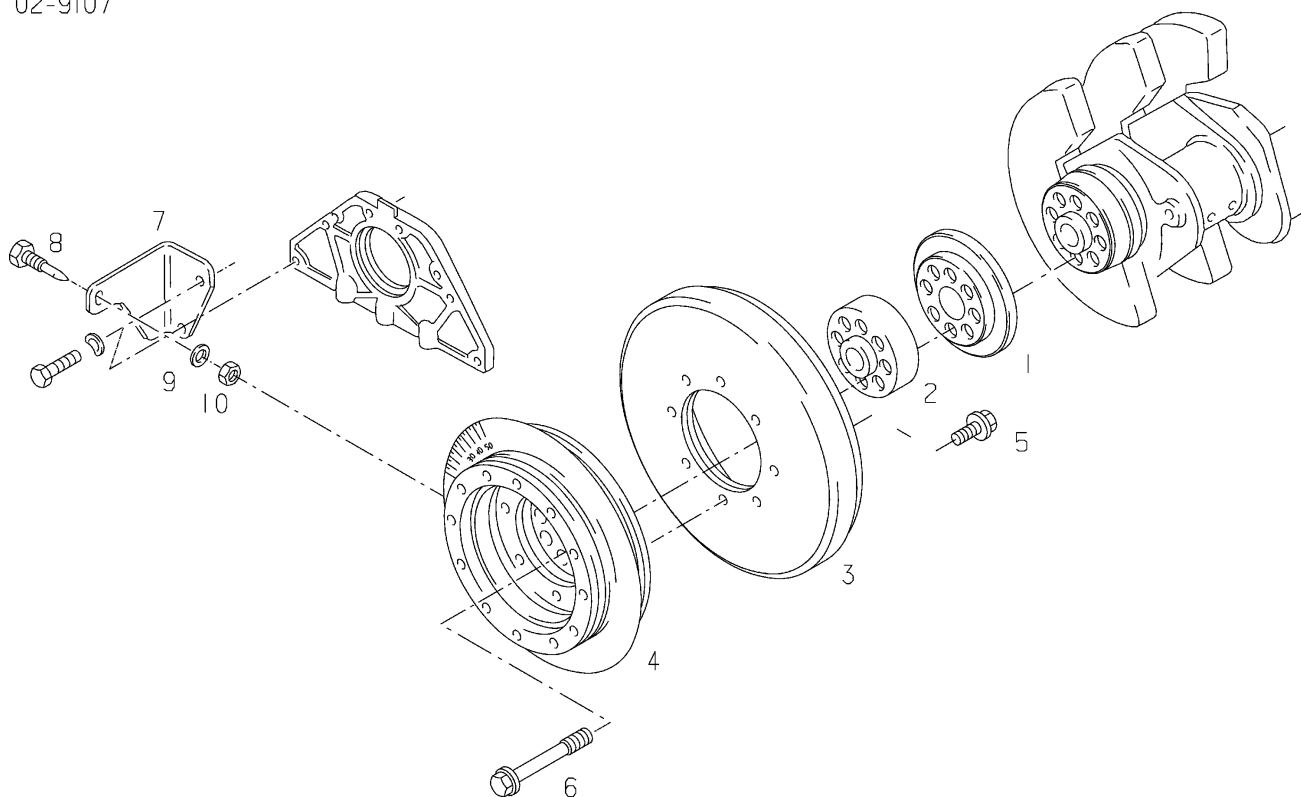
**ELTIS02005010**

**TIMING GEAR - CRANKSHAFT BEARING**

1	51.02115-6006	TIMING GEAR - CRANKSHAFT ASSEMBLY	1
2	06.22022-3015	DOWEL PIN 8H8X32-ST50-2K	1
3	51.01114-6085	THRUST BEARING NORMAL ASSEMBLY	1
3	51.01114-6087	THRUST BEARING REPAIR STAGE 1 = 0,25 MM ASSEMBLY	1
3	51.01114-6088	THRUST BEARING REPAIR STAGE 2 = 0,50 MM ASSEMBLY	1
3	51.01114-6089	THRUST BEARING REPAIR STAGE 3 = 0,75 MM ASSEMBLY	1
3	51.01114-6090	THRUST BEARING REPAIR STAGE 4 = 1,00 MM ASSEMBLY	1
4	51.01110-6528	MAIN BEARING NORMAL	6
4	51.01110-6529	MAIN BEARING NORMAL 1 = 0,10 MM	6
4	51.01110-6530	MAIN BEARING REPAIR STAGE 1 = 0,25 MM	6
4	51.01110-6531	MAIN BEARING REPAIR STAGE 2 = 0,50 MM	6
4	51.01110-6532	MAIN BEARING REPAIR STAGE 3 = 0,75 MM	6
4	51.01110-6533	MAIN BEARING REPAIR STAGE 4 = 1,00 MM	6

V-GR.: 51.#0000-0700

02-9107



**D 2842 LZE**

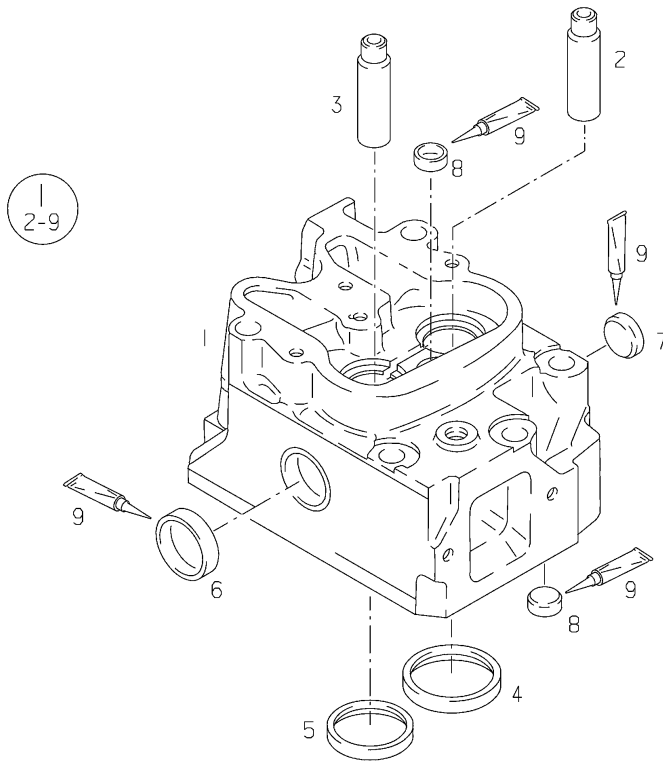
**ELTIS02010020**

**VIBRATION DAMPER**

1	51.01505-5009	SLINGER	1
2	51.02115-0127	HUB	1
3	51.02201-0081	CRANKSHAFT VIBRATION DAMPER	1
4	51.02601-5005	V-BELT PULLEY 2Z244-8X74 2-GROOVE SCALE	1
5	06.03216-8404	HEX FLANGE BOLT M10X20-10.9-MAN183-B1	8
6	51.90020-0246	HEX COLLAR BOLT M16X1,5X75-10.9-SW19-ZNPHR3F	8
7	51.97908-0052	CARRIER	1
8	51.97908-0050	POINTER	1
9	06.15013-0409	WASHER 6X12X1,6-200HV-MAN183-B1	1
10	06.11064-2112	HEXAGON NUT M6-8-MAN183-B1	1

V-GR.: 51.#0000-0700

03-9010



**D 2842 LZE**

**ELTIS03000010**

**CYLINDER HEAD**

3	51.03201-0103	VALVE GUIDE NORMAL 1 EXHAUST 18,25MM	12
---	---------------	---	----

V-GR.: 51.#0000-0700



03-9013/B

Erster Nachzug der Zylinderkopfschrauben erledigt  
gemaess SI 88 05 20/0

---

First retightening of cylinder head-bolts completed  
according to SI 88 05 20/0

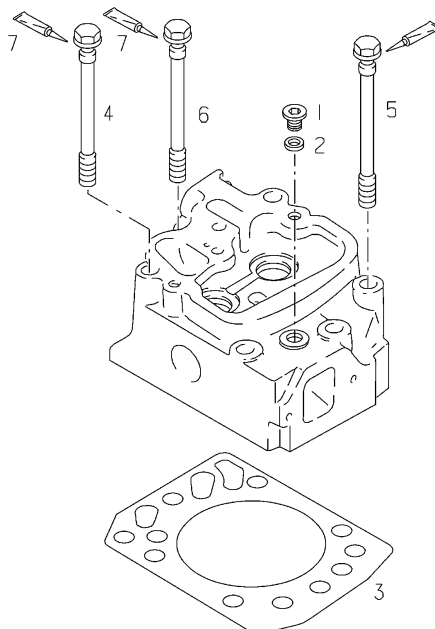
8

Zweiter Nachzug der Zylinderkopfschrauben erledigt  
gemaess SI 88 05 20/0

---

Second retightening of cylinder head-bolts completed  
according to SI 88 05 20/0

9



**D 2842 LZE**

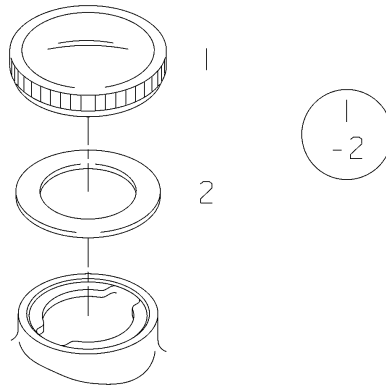
**ELTIS03020020**

**CYLINDER HEAD BOLT CYLINDER HEAD GASKET**

1	06.08042-0603	DRAIN PLUG M14X1,5-ST-A3C	12
1	06.08042-0603	DRAIN PLUG M14X1,5-ST-A3C	12
2	06.56190-0706	SEAL A14X20-CU	12
3	51.03901-0298	CYLINDER HEAD GASKET ASBESTOS-FREE	12
4	51.90490-0022	EXTERNAL HEX ROUND BOLT M15X2X168-1200N/MM2-E20-ZNPHR3	24
5	51.90490-0023	EXTERNAL HEX ROUND BOLT M15X2X144-1200N/MM2-E20-ZNPHR3	36
6	51.90490-0024	EXTERNAL HEX ROUND BOLT M15X2X109-1200N/MM2-E20-ZNPHR3	12
7	51.97801-0212	ADHESIVE LABEL 75X35/KST-WS/GN-SW	2
7	51.97801-0214	ADHESIVE LABEL 75X35/KST-WS/GN-SW	2
7	51.97801-0212	ADHESIVE LABEL 75X35/KST-WS/GN-SW	2
7	-	ASSEMBLY PASTE 100 G TUBE	1
-	51.97801-0212	ADHESIVE LABEL 75X35/KST-WS/GN-SW	2

V-GR.: 51.#0000-0700

03-9033



**D 2842 LZE**

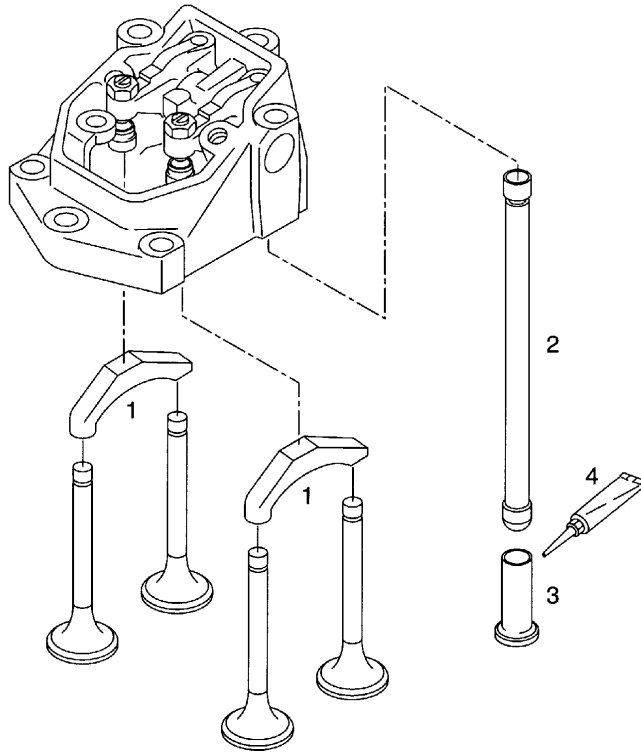
**ELTIS03030300**

**OIL FILLER COVER**

1	81.12210-0007	BAYONET CAP 40	1
2	51.96601-0313	SEAL 38X57X3-NBR-70	1

V-GR.: 51.#0000-0700

04-8039



**D 2842 LZE**

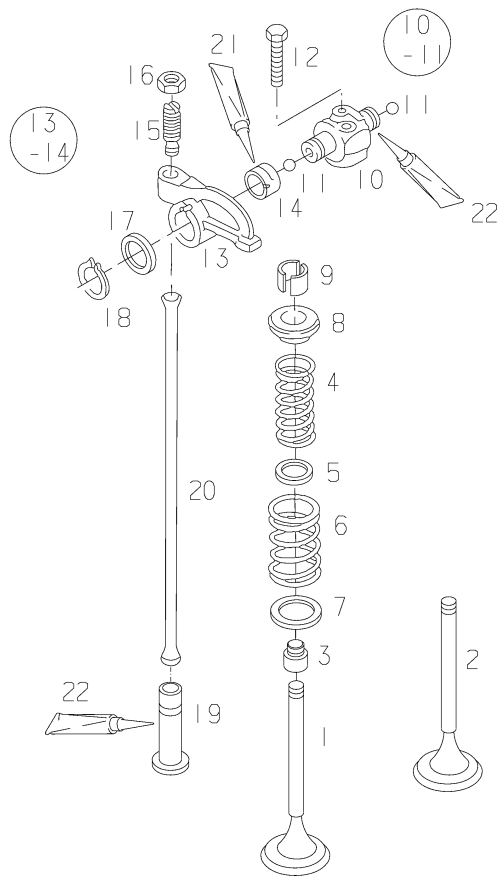
**#000004000001**

**VALVE CONNECTION PUSH ROD**

1	-	DELETED	*
2	-	DELETED	*

V-GR.: 51.#0000-0700

04-9017



**D 2842 LZE**

**ELTIS04050020**

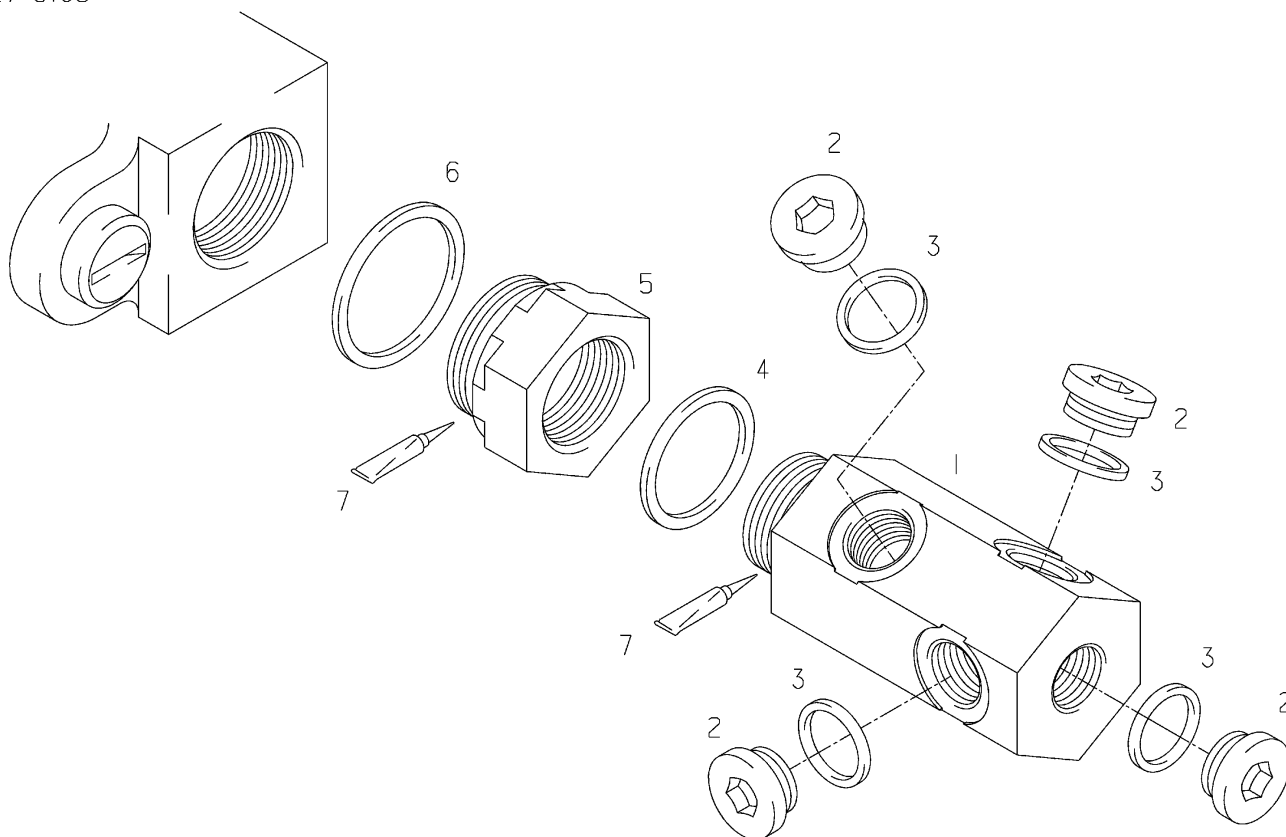
**VALVES**

18 | 06.29019-0320 | CIRCLIP 24X1,20

24

V-GR.: 51.#0000-0700

27-9105



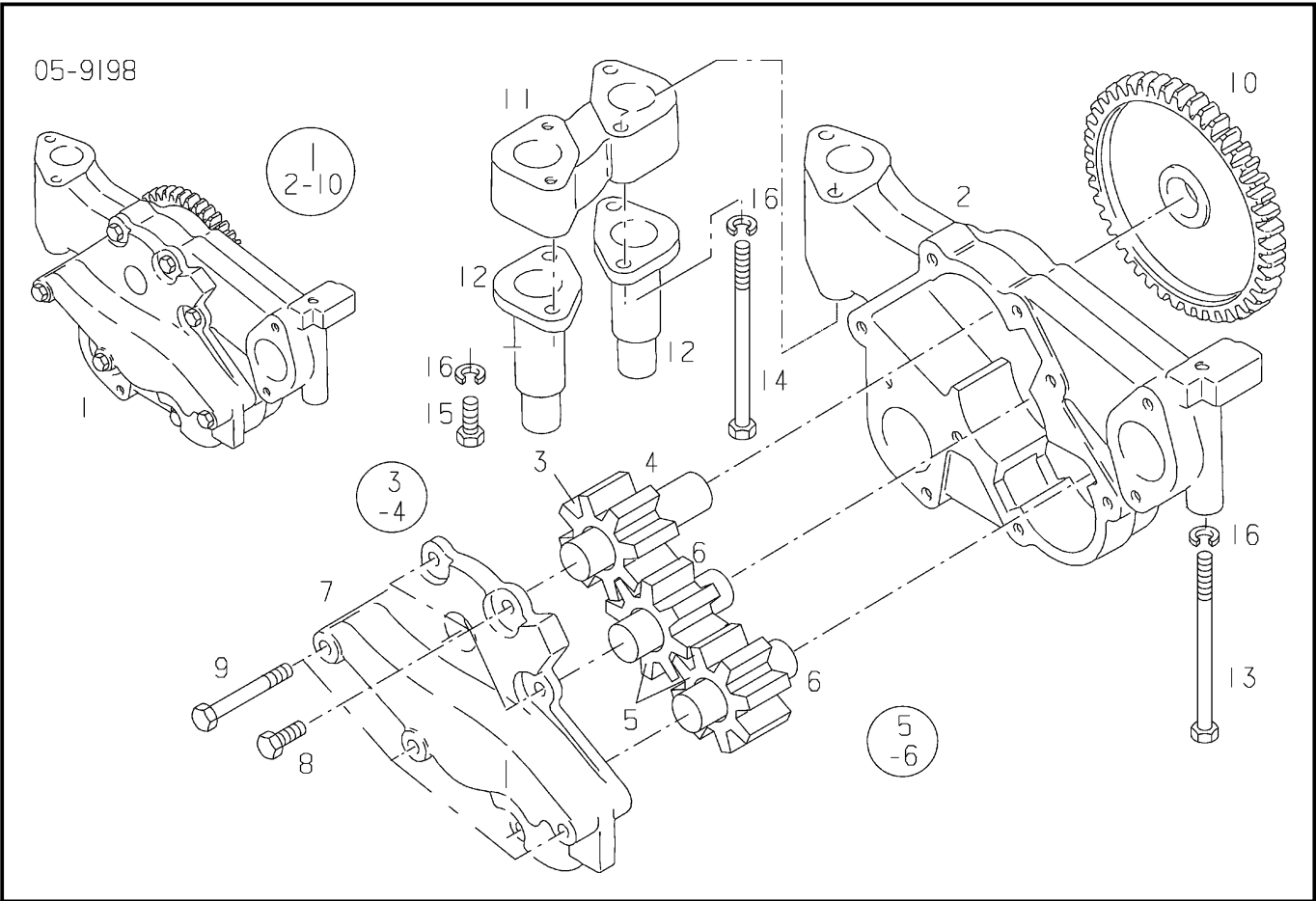
**D 2842 LZE**

**ELTIS27020090**

**CONNECTING PARTS OIL SUPPLY**

2	06.08042-0605	DRAIN PLUG M18X1,5-ST-A3C	7
3	06.56190-0812	SEAL A18X22-AL	7
4	06.56190-0832	SEAL A30X36-AL	1
6	06.56190-0839	SEAL A36X42-AL	1

V-GR.: 51.#0120-0083



**D 2842 LZE**

**ELTIS05000030**

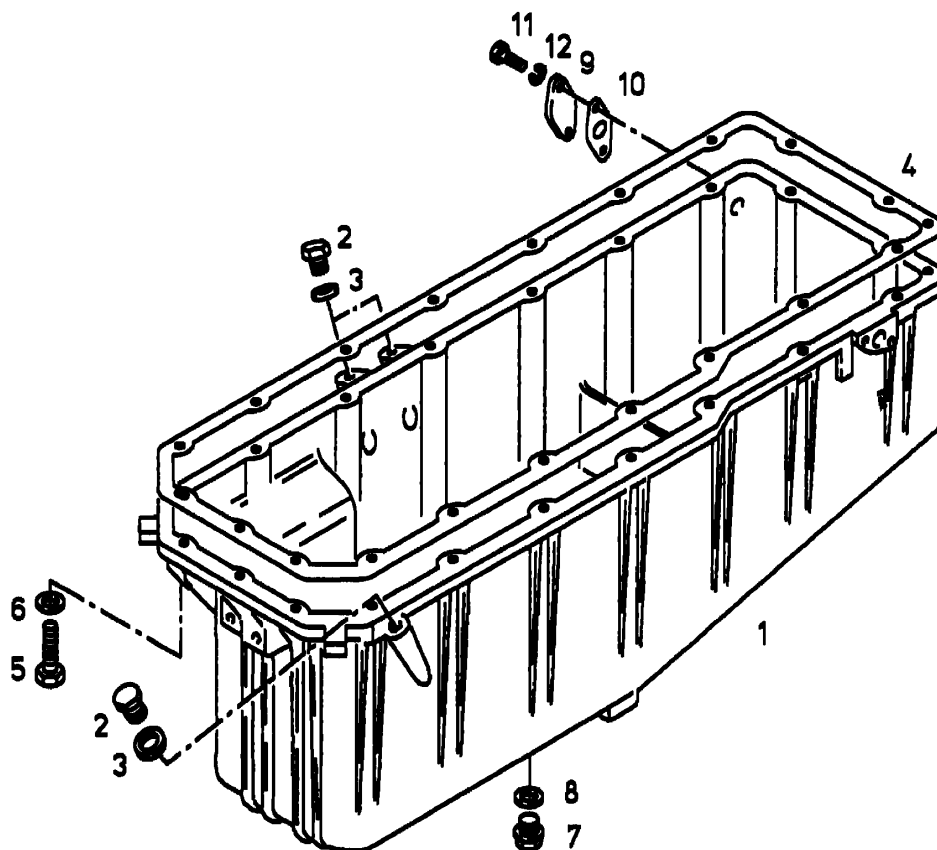
**OIL PUMP**

15 | 06.01283-3112 | HEX BOLT M8X18-8.8-A2C

2

V-GR.: 51.#0130-0125

05-9234



**D 2842 LZE**

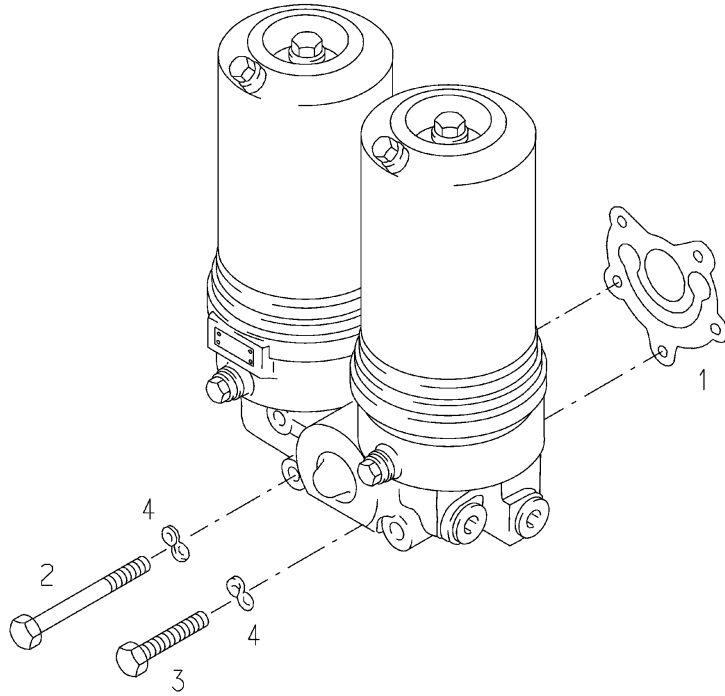
**#013005002620**

**OIL SUMP**

1	51.05801-5378	OIL SUMP DEEP	1
3	06.56190-0706	SEAL A14X20-CU	3
5	06.01284-7118	HEX BOLT M8X35-10.9-MAN183-PHR	20
6	06.15033-0813	WASHER 8X15X1,6-200HV-MAN183-B1	20
7	51.90310-0186	DRAIN PLUG M26X1,5X20-9SMNPB28K	1
8	51.96601-0352	GASKET ASBESTOS-FREE	1
9	51.98112-0123	RIVETTED FLANGE	1
10	51.96601-0383	GASKET 26X52,5X11X1,5-AFOE2 ASBESTOS-FREE	1
11	06.01283-5215	HEX BOLT M10X25-8.8-MAN183-B1	2
12	06.16739-0012	SPRING WASHER A10-MAN183-B1	2

V-GR.: 51.#0130-0125

05-9178/1



**D 2842 LZE**

**#012005001150**

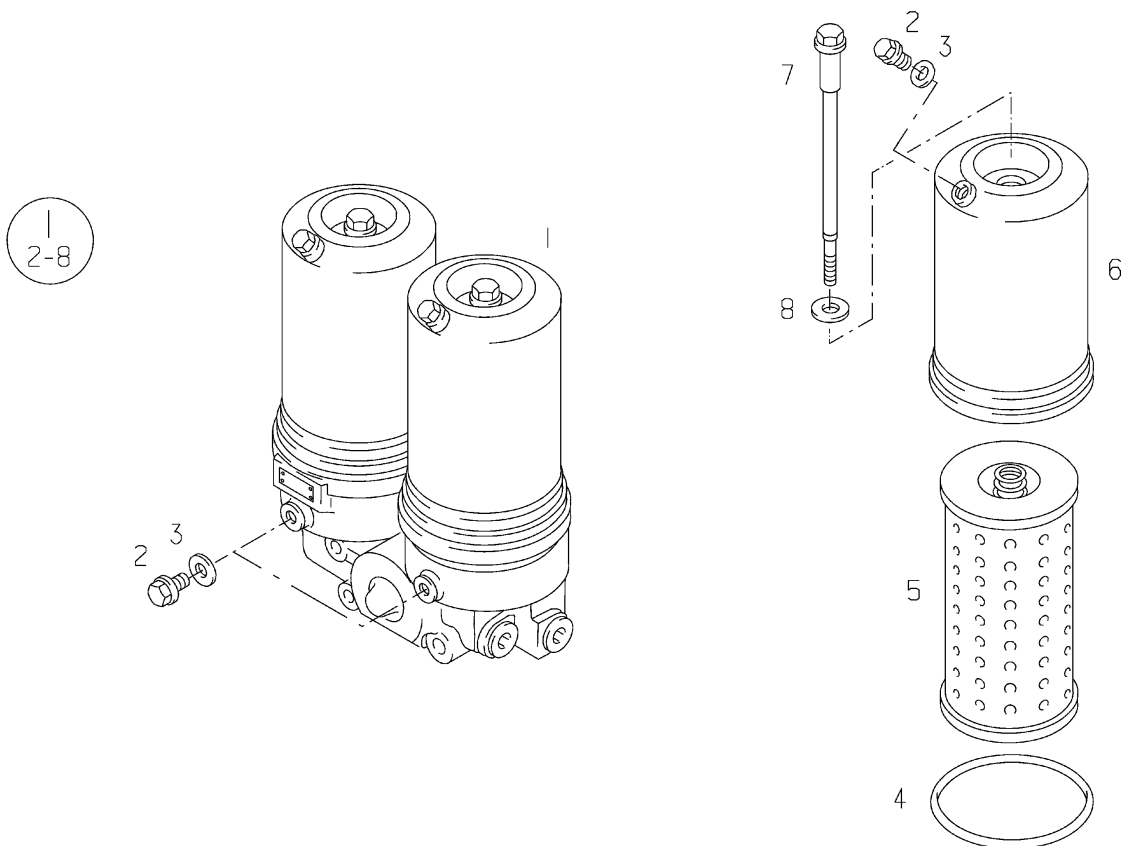
**TWIN OIL FILTER INSTALLATION**

2	06.01019-0124	HEX SHOULDER STUD M10X115-8.8-A3C	4
3	06.01283-5221	HEX BOLT M10X50-8.8-MAN183-B1	1

V-GR.: 51.#0120-0083



05-9175/A



**D 2842 LZE**

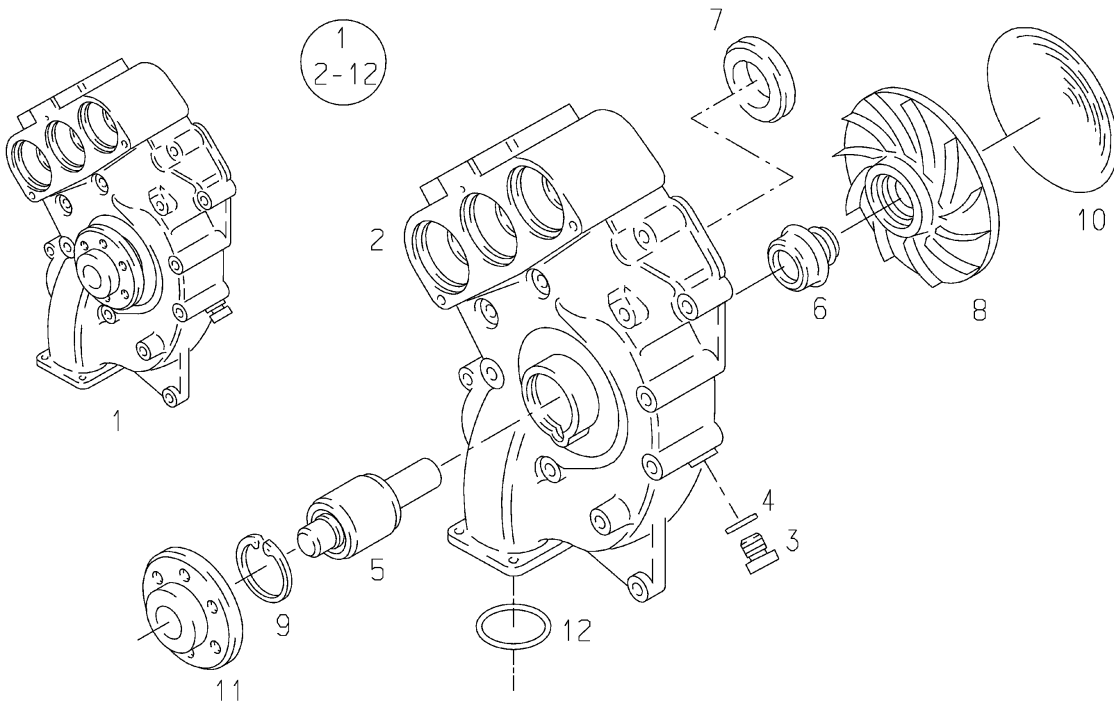
**ELTIS05050010**

**TWIN OIL FILTER WITHOUT CHANGE-OVER COMPONENTS**

1	51.05501-7151	TWIN OIL FILTER WITHOUT CHANGE-OVER ASSEMBLY	1
-	-	FOR TWIN OIL FILTER 51.05501-7177	*
5	51.05504-0104	ENGINE OIL FILTER ELEMENT	2
-	-	FOR TWIN OIL FILTER 51.05501-7195	*
6	51.05502-6008	FILTER HOUSING	2
-	-	FOR TWIN OIL FILTER 51.05501-7177	*
-	-	FOR TWIN OIL FILTER 51.05501-7195	*
8	06.56190-0706	SEAL A14X20-CU	2
-	-	FOR TWIN OIL FILTER 51.05501-7177	*
8	06.56190-0905	SEAL A14X18-ST	2
-	-	FOR TWIN OIL FILTER 51.05501-7195	*

V-GR.: 51.#0120-0083

06-9307/1



**D 2842 LZE**

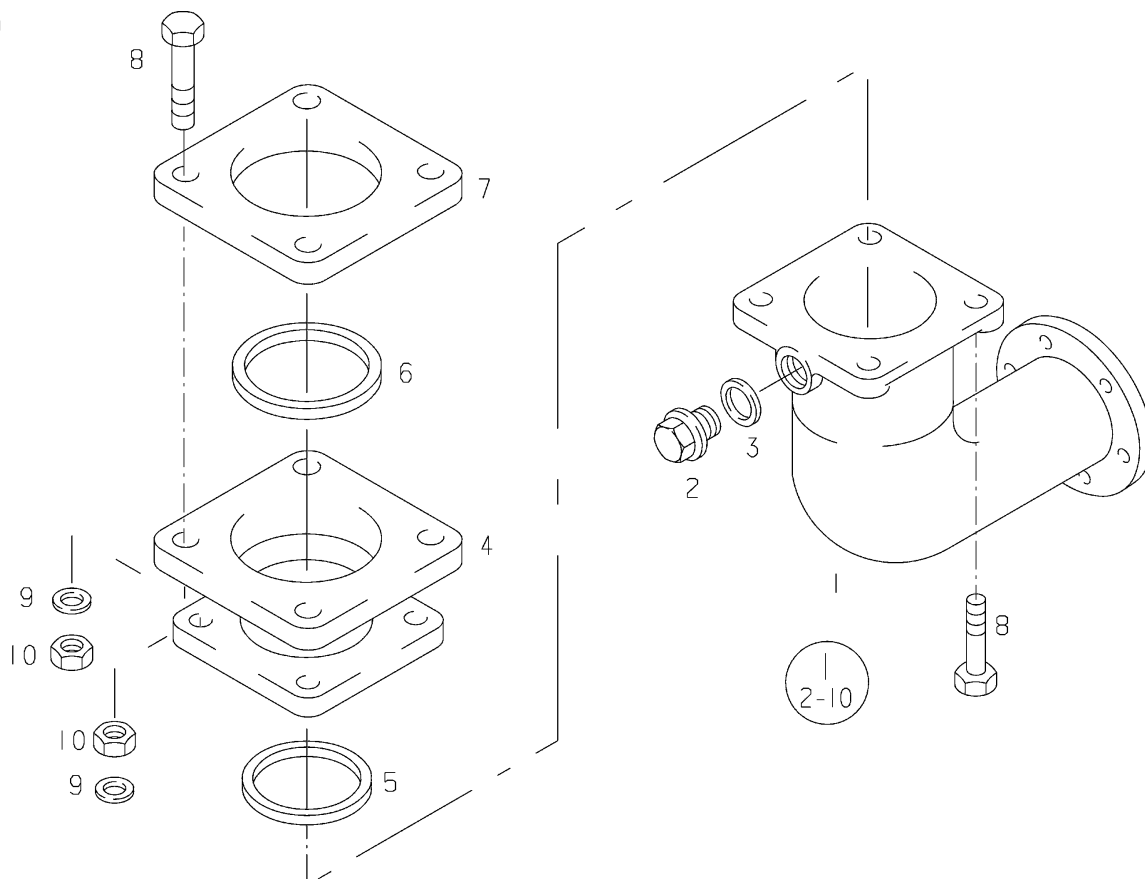
**ELTIS06000010**

**COOLANT PUMP**

4	06.56190-0709	SEAL A16X22-CU	1
8	51.06506-6003	DIFFUSER	1

V-GR.: 51.#0140-0415

08-9020



**D 2842 LZE**

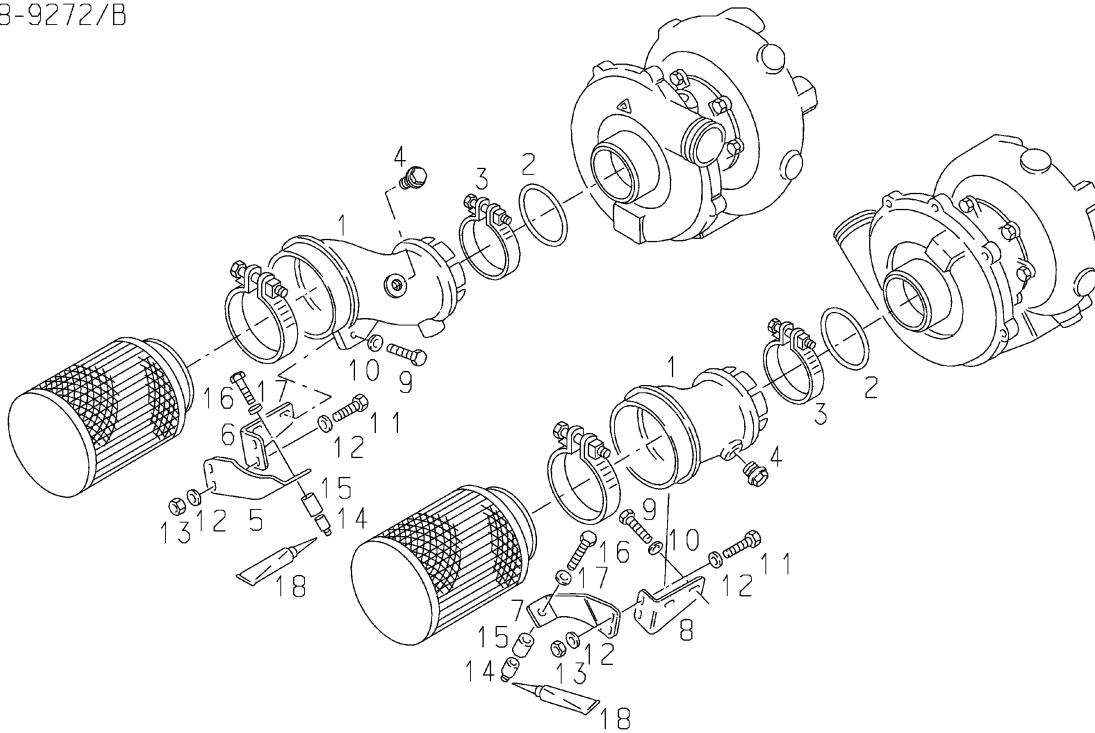
**ELTIS08080030**

**EXHAUST ELBOW**

2	06.08069-0054	DRAIN PLUG G3/4"A-ST-A3C	1
8	06.01289-0187	HEX BOLT M16X60-8.8-MAN183-A3C	8
9	06.15013-0416	WASHER 16X30X3-200HV-MAN183-B1	8

V-GR.: 51.#0450-0094

08-9272/B



**D 2842 LZE**

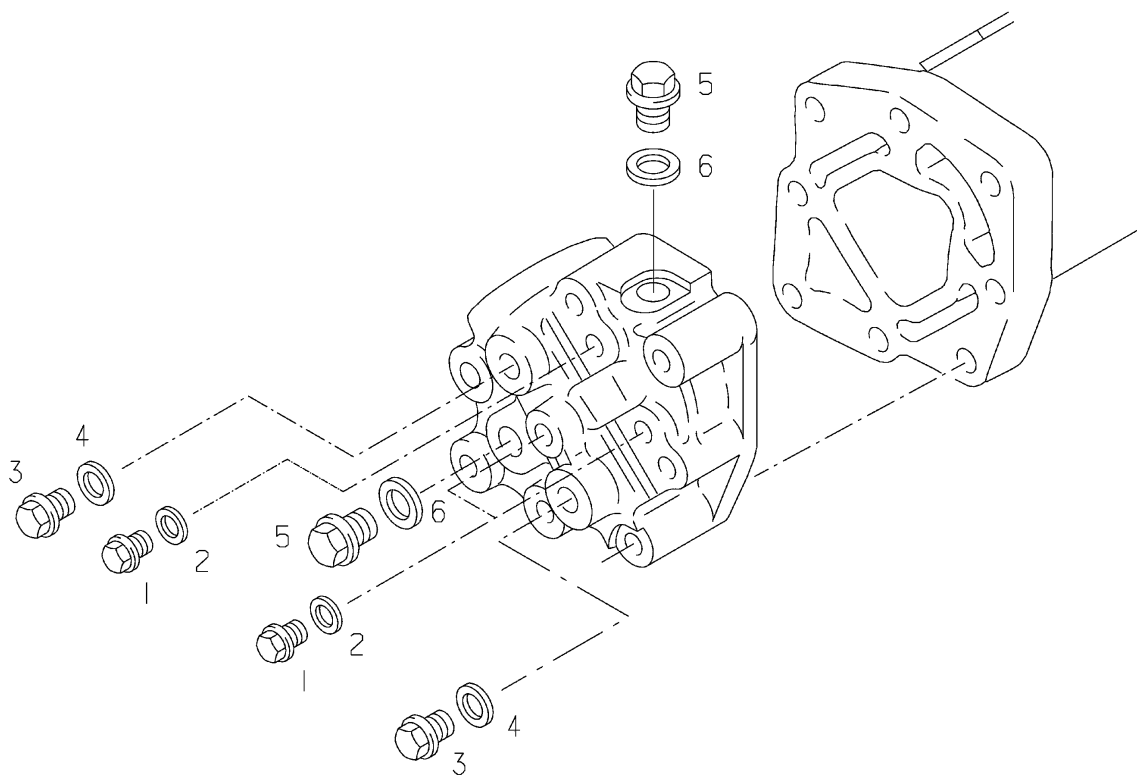
**ELTIS08010030**

**INTAKE MANIFOLD**

9	06.01283-5115	HEX BOLT M8X25-8.8-MAN183-B1	4
13	06.11064-2114	HEXAGON NUT M8-8-MAN183-B1	4

V-GR.: 51.#0110-0177

08-9242



**D 2842 LZE**

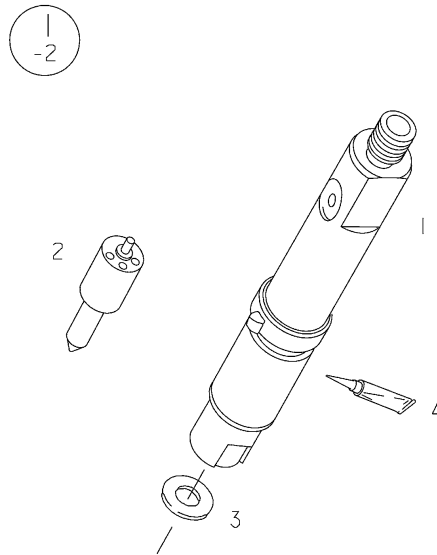
**ELTIS08060050**

**PLUGGING PARTS**

2	06.56631-0106	SEAL 14,7X22X1,5-ST/FPM1-80 WITH ELASTOMER LIP	3
4	06.56631-0109	SEAL 18,7X26X1,5-ST/FPM1-80 WITH ELASTOMER LIP	2
6	06.56631-0110	SEAL 22,7X30X2-ST/FPM1-80 WITH ELASTOMER LIP	2

V-GR.: 51.#0160-0138

10-9043



**D 2842 LZE**

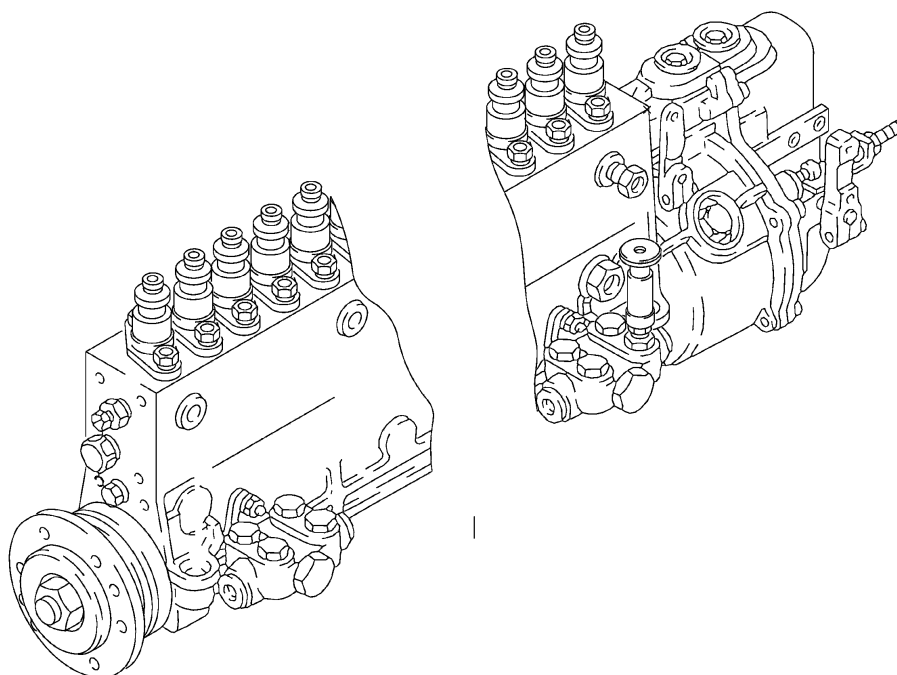
**ELTIS1000020**

**NOZZLE HOLDER NOZZLE**

3	51.98701-0065	SEAL 9,5X20X1-CU	12
3	51.98701-0075	SEAL 9,5X20X0,5-CU	12
3	51.98701-0076	SEAL 9,5X20X1,5-CU	12
3	51.98701-0086	SEAL 9,5X20X2-CU	12
3	51.98701-0087	SEAL 9,5X20X2,5-CU	12
3	51.98701-0088	SEAL 9,5X20X3-CU	12

V-GR.: 51.#0020-0759

11-9239



**D 2842 LZE**

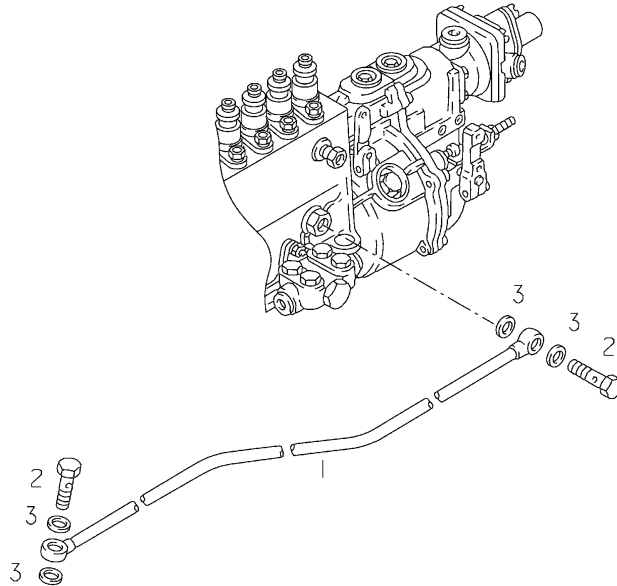
**ELTIS11010120**

**INJECTION PUMP**

1	51.11103-7156	INJECTION PUMP WITH REGULATOR	1
---	---------------	-------------------------------	---

V-GR.: 51.#0020-0759

11-9184



**D 2842 LZE**

**ELTIS11000190**

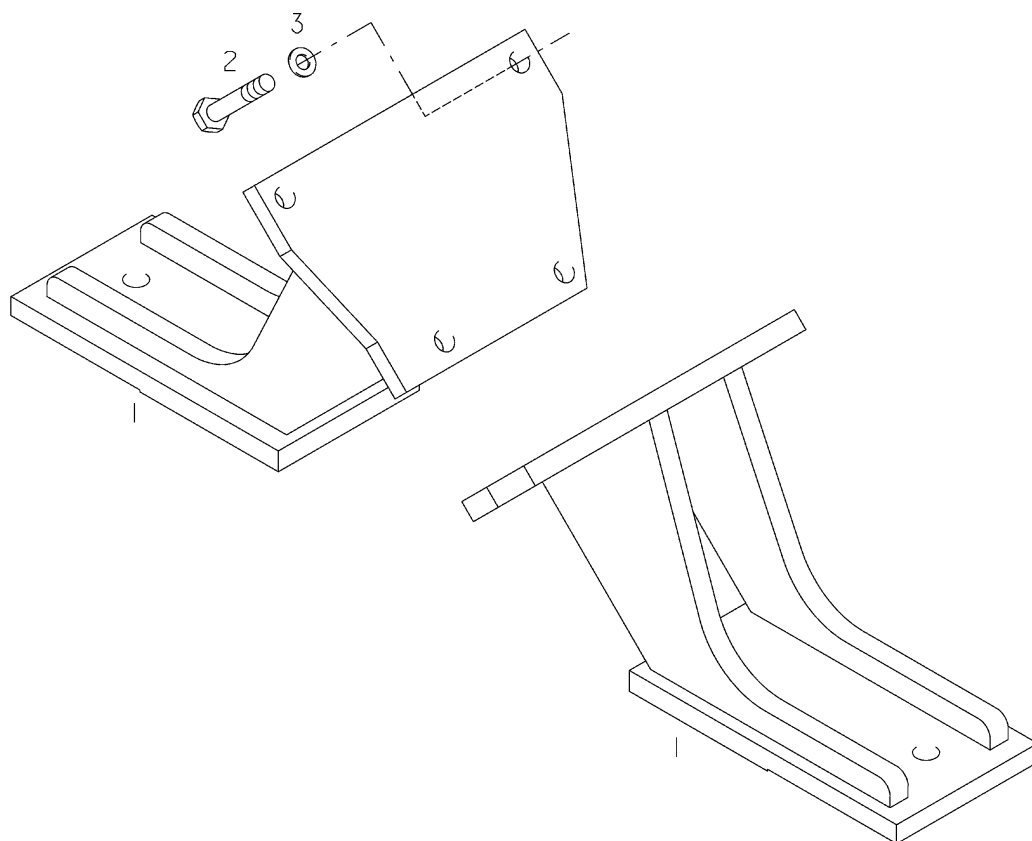
**OIL RETURN PIPE**

1	51.05702-5676	OIL RETURN PIPE	1
2	51.98150-0110	HOLLOW SCREW M14X1,5X26E-9SMNPB28K	2
2	51.98150-0175	HOLLOW SCREW M14X1,5X26E-ST-SW19-P3A	2
3	06.56190-0706	SEAL A14X20-CU	4
3	06.56631-0106	SEAL 14,7X22X1,5-ST/FPM1-80 WITH ELASTOMER LIP	4

V-GR.: 51.#0000-0700



17-9088



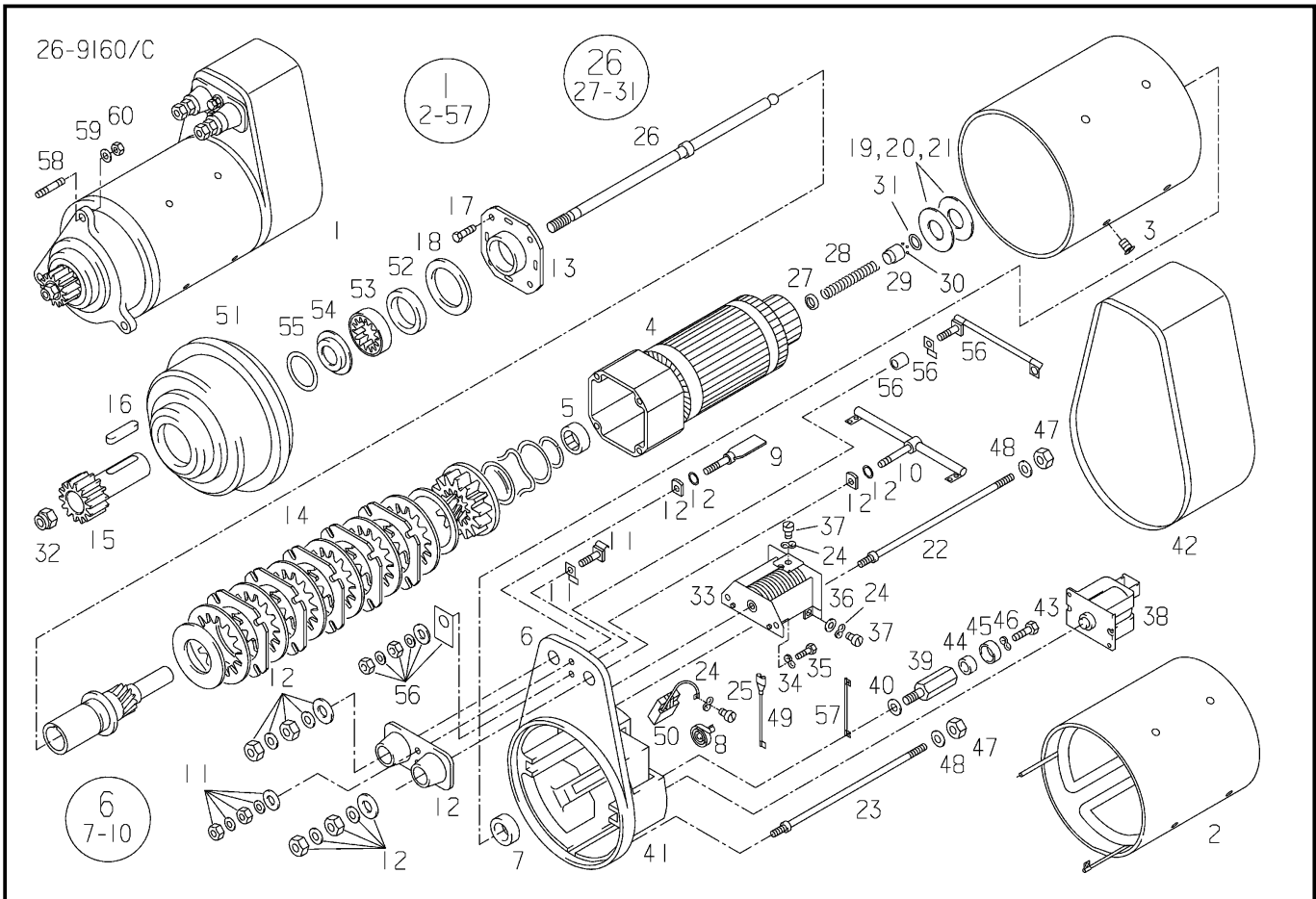
**D 2842 LZE**

**ELTIS17000060**

**ENGINE MOUNTING**

1	51.17310-5118	ENGINE SUPPORT OPPOSITE FLYWHEEL END	2
---	---------------	--------------------------------------	---

V-GR.: 51.#0410-0262



**D 2842 LZE**

**ELTIS26030020**

**STARTER**

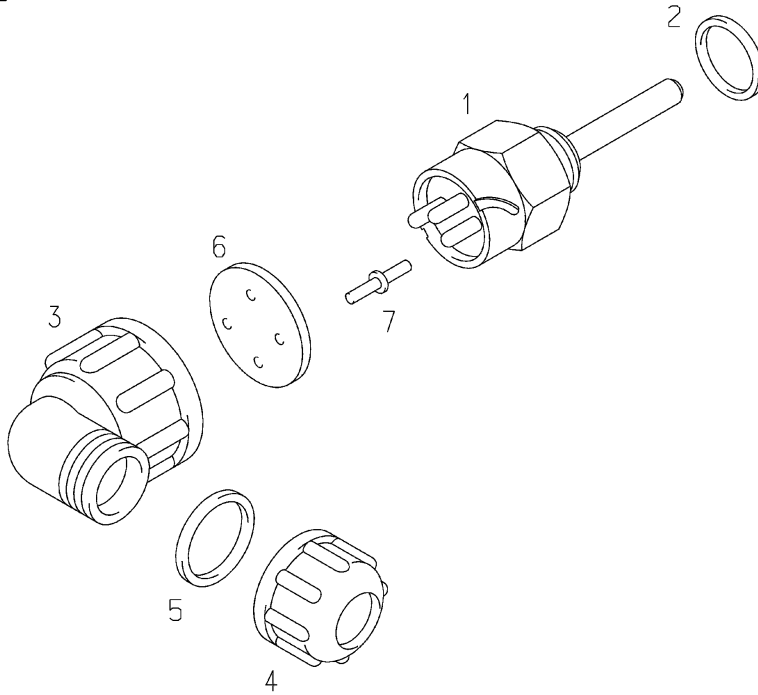
1	51.26201-7139	STARTER	1
2	81.26204-0033	EXCITER WINDING	1
3	81.90040-0043	COUNTERSUNK SCREW M10X18-8.8-T50 WITH INTERNAL TORX	8
4	81.26203-6019	ARMATURE ASSEMBLY	1
5	81.93401-0013	NEEDLE SLEEVE HK1816-J	1
6	81.26207-6026	COMMUTATOR END SHIELD	1
7	81.93020-0428	BUSH	1
8	81.97601-0601	PRESSURE SPRING	4
9	51.26220-0001	BAR	1
10	81.25402-6804	CABLE HARNESS	1
11	51.26232-6004	PARTS KIT 50 CONNECTOR	1
12	51.26232-6003	PARTS KIT 30,31 CONNECTOR	1
13	81.26221-0006	BEARING CAP	1
14	81.26225-6003	CLUTCH SHAFT	1
15	81.26209-0015	STARTER PINION Z=9	1
16	06.29100-4209	KEY A6X4X32-ST60-2K	1
17	06.02849-0008	HEX LOCK SCREW M5X14C-MK7,5-10.9-A2C	4
18	81.90701-0688	WASHER	1
19	81.90701-0686	WASHER 22,7X31,8X0,3-ST	1
20	81.90701-0687	WASHER 22,7X31,8X0,5-ST	1

V-GR.: 51.#0050-0122

<b>D 2842 LZE</b>			<b>ELTIS26030020</b>
21	81.90701-0685	WASHER 22,7X31,8X0,2-ST	1
22	90.81690-1127	STUD	1
23	81.90210-0035	STUD M6X10X20X230-M.I.	3
24	06.16739-0010	SPRING WASHER A5-MAN183-B1	8
25	81.90030-0057	CYLINDER SCREW M5X14SD-A2B	2
26	81.26214-0003	ARMATURE SHAFT	1
27	06.18879-0001	STOP RING	1
28	81.97602-0320	PRESSURE SPRING	1
29	81.90712-0718	STOP RING	1
30	06.31630-0311	BALL 3G20	11
31	81.90820-0069	CIRCLIP	1
32	81.90501-0141	HEX LOCK NUT BM10-13,8-ST-SW17-A3A	1
33	81.26212-0014	SOLENOID SWITCH	1
34	51.90810-0019	SPRING WASHER	2
35	06.01283-5111	HEX BOLT M8X16-8.8-MAN183-B1	2
36	06.15013-0408	WASHER 5X10X1-200HV-MAN183-B1	3
37	81.90030-0045	CYLINDER SCREW M5X10SD-A2B	6
38	51.26212-0004	SOLENOID SWITCH HEAT-RESISTANT	1
39	81.90201-0092	THREADED PIN	2
40	81.90711-0480	WASHER	2
41	81.96501-0472	SEAL ASBESTOS-FREE	1
42	81.26221-0008	CAP	1
43	06.04255-1209	CYLINDER SCREW M6X16-8.8-A3C	2
44	81.26233-0002	SEALING WASHER	2
45	81.97651-0026	DISHED WASHER	2
46	06.16739-0011	SPRING WASHER A6-MAN183-B1	2
47	06.11064-2112	HEXAGON NUT M6-8-MAN183-B1	4
48	06.15030-0812	WASHER 6,4X11X1,6-140HV-MAN183-B1	4
48	06.15033-0812	WASHER 6X11X1,6-200HV-MAN183-B1	4
49	81.25400-6786	POWER CABLE STARTER	1
50	81.25921-6051	CARBON BRUSH 36X12X27 SET	1
51	81.26215-6014	DRIVE BEARING	1
52	81.93020-0427	BUSH	1
53	81.26215-6009	SLEEVE RH33X48X15	1
54	81.96501-0575	SEAL	1
55	81.97601-0659	PRESSURE SPRING	1
56	51.26232-6001	PARTS KIT	1
57	81.25402-6805	CABLE HARNESS	1
58	06.06145-0308	STUD M12-M12X1,5X30-8.8	3
59	06.16739-0013	SPRING WASHER A12-MAN183-B1	3
60	06.11064-2316	HEXAGON NUT M12X1,5-8-MAN183-B1	3

V-GR.: 51.#0050-0122

27-9083/D



**D 2842 LZE**

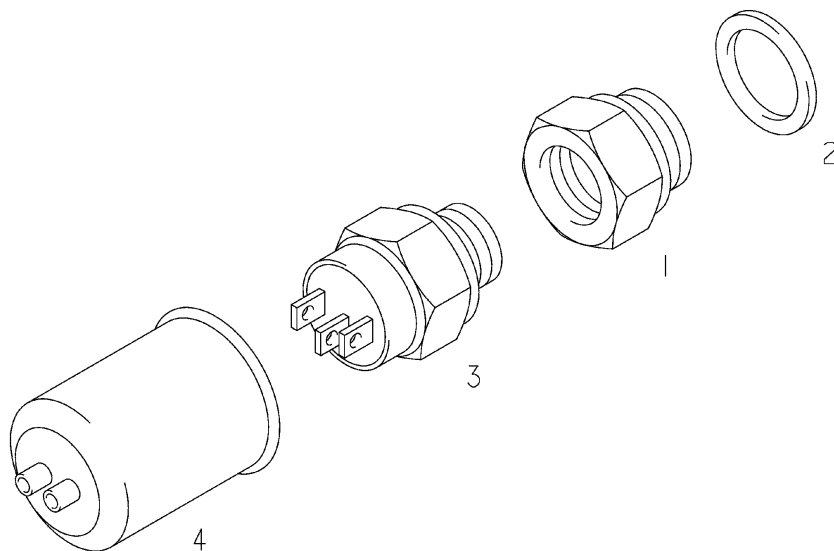
**ELTIS27010100**

**LEVEL MONITOR COOLING WATER**

1	51.27421-0083	FLUID LEVEL PROBE	1
2	06.56190-0712	SEAL A18X22-CU	1
3	07.91164-0097	ADAPTER BAJO27,6-PG11-PA6-SW ANGULAR	1
4	07.91168-0046	UNION NUT A-NW10-PG11-PA UM7	1
5	81.96503-0050	COMPRESSION SEAL 10-MAN304-CR1-40	1
6	81.25435-0498	GASKET 4-HOLE ASBESTOS-FREE	1
7	07.91201-5127	ROUND CONNECTOR 4,0-2,5-CUZN-AG XK7-2<5	3

V-GR.: 51.#0600-0102

27-9023/A



**D 2842 LZE**

**#061027000001**

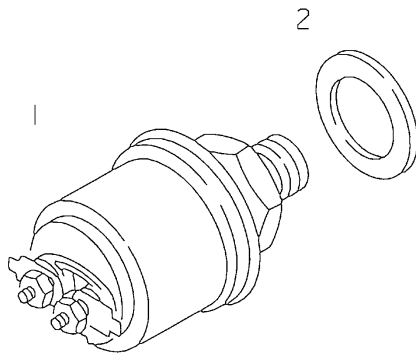
**OIL PRESSURE CONTROL**

2	06.56190-0712	SEAL A18X22-CU
---	---------------	----------------

1
---

V-GR.: 51.#0610-0031

x  
27-9115



x

**D 2842 LZE**

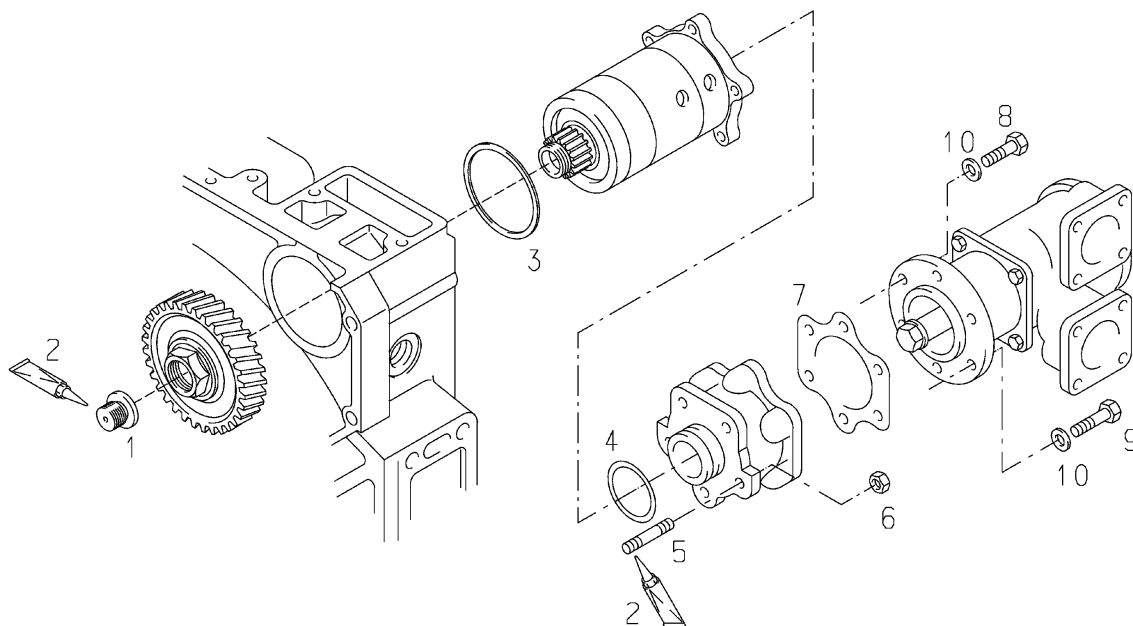
**ELTIS27020150**

**OIL PRESSURE SENDER**

1	50.27421-0033	OIL PRESSURE SENDER	1
2	06.56190-0713	SEAL A18X24-CU	1

V-GR.: 51.#0730-0033

38-9040



**D 2842 LZE**

**ELTIS38005010**

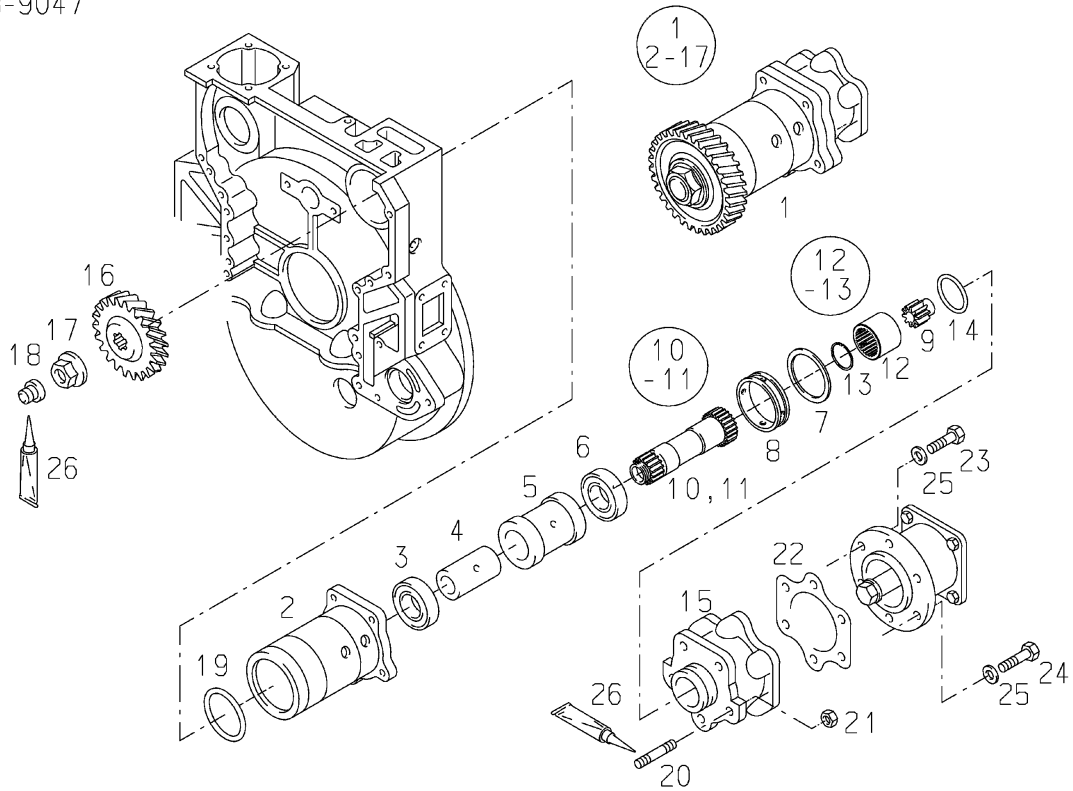
**RAW WATER PUMP DRIVE**

4	06.56343-2241	TORIC SEAL 75X3B-FPM1-70-GN
---	---------------	-----------------------------

1
---

V-GR.: 51.#0360-0206

38-9047



**D 2842 LZE**

**ELTIS38005030**

**RAW WATER PUMP POWER TAKE-OFF WITH COMPONENTS**

10	51.38516-6002	DRIVE SHAFT	1
14	06.56343-2241	TORIC SEAL 75X3B-FPM1-70-GN	1

V-GR.: 51.#0360-0206



1

2

**Ventilspiel**  
Einlass 0,5mm  
Auslass 0,5mm

3

**OELEINFUELLMENGE**  
**OIL PAN CAPACITY**  
MINIMUM : XX LTR.  
MAXIMUM : XX LTR.

4

Erster Nachzug der Zylinderkopfschrauben erledigt  
-----  
First retightening of cylinder-head-bolts completed

5

Zweiter Nachzug der Zylinderkopfschrauben erledigt  
-----  
Second retightening of cylinder-head-bolts completed

6

Premier resserage des vis de culasses effectuee conformement  
-----  
Primer reapriete de los tornillos de culata efectuado

7

Second resserage des vis de culasses effectuee conformement  
-----  
Segundo reapriete de los tornillos de culata efectuado

8

9

**Ventilspiel / Valve Lash**  
Einlass / Intake 0,5mm  
Auslass / Exhaust 0,6mm

10

**Ventilspiel**  
Einlass 0,6mm  
Auslass 0,6mm

11

12

**ACHTUNG/ATTENTION**  
NUR SYNTHETIC MOTORENÖL NACH  
MAN-NORM M3277 VERWENDEN!  
USE ONLY SYNTHETIC ENGINE OIL  
ACCORDING MAN STANDARD M3277

13

<b>D 2842 LZE</b>	<b>ELTIS99099980</b>
-------------------	----------------------

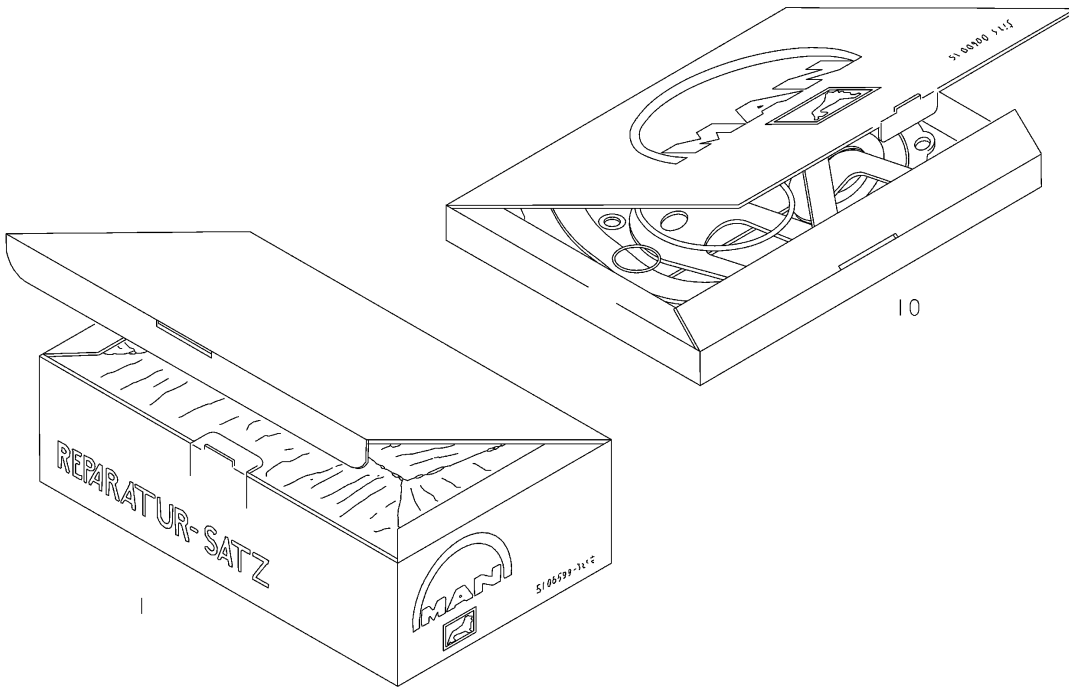
**INSTRUCTION PLATES**

4	51.97801-0211	ADHESIVE LABEL 75X35/KST-WS/RT-SW	2
5	51.97801-0212	ADHESIVE LABEL 75X35/KST-WS/GN-SW	2
6	51.97801-0213	ADHESIVE LABEL 75X35/KST-WS/RT-SW	2
7	51.97801-0214	ADHESIVE LABEL 75X35/KST-WS/GN-SW	2

V-GR.: 51.#0000-0700



90-9002



**D 2842 LZE**

**ELTIS99000050**

**SET OF GASKETS FOR ENGINE**

-	51.03901-0298	CYLINDER HEAD GASKET ASBESTOS-FREE	12
-	51.96501-0417	TORIC SEAL 138X2,1-FPM--80	24

V-GR.: 51.#0000-0700





Printed in Germany