



SULZER

RLA/RLB76

Spare Parts Code Book

“Marine”

Vessel:

Type:

Engine No.:

Book No.:

Wärtsilä Switzerland Ltd
PO Box 414
CH-8401 Winterthur
Switzerland

24hrs Support: +41 52 262 80 10
technicalsupport.chts@wartsila.com

For Particular Attention

This manual is put at the disposal of the recipient solely for use in connection with the corresponding type of diesel engine.
It has always to be treated as confidential.

The intellectual property regarding any and all of the contents of this manual, particularly the copyright, remains with **Wärtsilä Switzerland Ltd**. This document and parts thereof must not be reproduced or copied without their written permission, and the contents thereof must not be imparted to a third party nor be used for any unauthorized purpose.

To ensure the best efficiency, reliability and lifetime of the engine and its components, only **original spare parts** should be used.

The data, instructions and graphical illustrations etc. in this manual are based on drawings made by **Wärtsilä Switzerland Ltd** and correspond to the actual standard at the time of printing (year of printing is indicated on title page).

Those specifications and recommendations of the classification societies which are essential for the design have been considered therein. It must be recognized that such data, instructions and graphical illustrations may be subject to changes due to further development, widened experience or any other reason.

This manual has been prepared to the best knowledge and ability of its authors. However, neither Wärtsilä Switzerland Ltd nor their employees assume any liability – under any legal aspect whatsoever, including possible negligence – in connection with this manual, its contents, or modifications to it or in connection with its use.

Claims relating to any damage whatsoever or claims of other nature such as, but not limited to, demands for additional spares supplies, service or others are expressly excluded.

Wärtsilä Switzerland Ltd
Winterthur
Switzerland

Instructions for Use of Code Book

1. Contents

The different parts of the diesel engine concerned are listed in this Code Book and provided with code numbers.

The scope comprises all engine components except the following parts which have no code number and which are therefore not listed in the Code Book:

- Single components from sub-suppliers
- Commercially standard parts (screws, bolts, nuts, washers etc.)
- Standard piping including flanges and screwed connections

This Spare Parts Code Book contains various design executions (Alternatives). Care must be taken that only such spare parts are ordered which are really fitted to the engine.

These design execution alternatives have been marked in the table of contents 020, as well as in the respective text sheet with (●). It is here necessary to determine which design executive is actually fitted.

Engine components shown/described on pages marked with (○) may but not must be fitted (depending on the engine plant).

2. Required information for a spare part order

To ensure that the enquiry or order respectively are correctly executed, the following indications are indispensable:

a) Ship's name or site of installation for stationary engines

b) Engine type, building year and maker

c) Cylinder or engine number

d) Design execution (code sheet number) according to table of contents 020

e) Code number with denomination of parts

f) Quantity of desired part

g) Classification society (only required for parts requiring acceptance by classification society)

Attention

The indication of a complete code number is essential for a satisfactory spare parts supply.

In cases of doubt **Wärtsilä Switzerland Ltd** or the **engine manufacturer** must be contacted for clarification.

Telephonic order must be immediately confirmed in writing.

Address: Wärtsilä Switzerland Ltd
 Service
 PO Box 414
 CH-8401 Winterthur, Switzerland
 Tel.: +41 52 262 44 11
 Tel.: +41 52 262 80 10 Technical Support (24/7)
 Tel.: +41 79 671 87 67 Spare Parts Support (24/7)
 Fax: +41 52 262 07 22
 E-Mail: service.sales.ch@wartsila.com

Table of contents

Group 0

Instruction for use of code book	RL . R 000/1
For particular attention	RL . R 000/2
Table of contents	R 020/1

Group 1

Bedplate	R 111-2
Main bearing (jack bolt)	R 113-2
Thrust bearing (arrangement)	R 120-5
Thrust bearing engine with fixed pitch propeller	RL ● R 120-6
Thrust bearing engine with controllable pitch propeller	RL ● R 120-7
Columns for the working cylinders	R 140-2
Guide bar for the working cylinders	R 148-1
Outer casings for columns	(4-6 cylinder) ● R 152-3
Outer casings for columns	(7-10 cylinder) ● R 152-4
Door for columns (relief valve) HOERBIGER	RL . R 170
Door for columns	FUEL PUMP SIDE RL ● R 171-1
Door for columns	FUEL PUMP SIDE RL ● R 171-2
End casing	FREE END R 172-2
Tie rod	RL . R 191

Group 2

Cylinder jacket (cover arrangement)	RL . R 211-1
Cylinder jacket	R 211-3
Cylinder liner, lubricating quill with accumulator	RL . R 214
Gland box	R 231-2
Cylinder cover	R 270-1
Fuel injection valve	R 272-3
Starting valve	RL . R 274
Relief valve, indicator valve	RL . R 277

Group 3

Crankshaft	(6 cylinder) ● R 310
Crankshaft	(4 cylinder) ● R 310-3
Crankshaft	(5 cylinder) ● R 310-5
Turning gear (vertical worm shaft)	R 323
Turning gear (pinion shaft)	R 324-1
Turning gear (horizontal worm shaft)	R 324-4
Turning gear (disengaging device)	R 325
Connecting rod	R 330
Crosshead	R 333-1
Crosshead lubricating	RL . R 334
Piston	piston head "flat type" ● R 340-2
Piston	piston head "conical type" ● R 340-5
Piston cooling (chest)	R 361
Piston cooling (stand pipe)	R 361-1
Piston cooling (gland box)	R 362
Flow observation box for piston cooling	RL . R 363

Group 4

Pressure-reducing station	RL	R 400
Control elements (unit for emergency control air supply)	RL	R 404
Intermediate wheel for camshaft drive		R 411
Vertical drive	RL	R 413
Camshaft (arrangement) (4–6 cylinder)	RL	● R 421
Camshaft (arrangement) (7–8 cylinder)	RL	● R 421–1
Camshaft (arrangement) (9–10 cylinder)	RL	● R 421–2
Camshaft (fuel pump cam)	RL	R 421–4
Reversing servomotor on camshaft		● R 423
Reversing servomotor on camshaft (7–10 cylinder)		● R 423–1
Bearing housing for reversing servomotor		R 425
Starting air distributor	RL	R 431
Automatic starting air stop valve	RL	R 436
Non-return valve for starting air	RL	● R 437
Automatic starting air stop valve (locking device)		R 437–2
Non-return valve for starting air "HOERBIGER"		● R 437–3
Reversing valve	RL	R 451
Rods for reversing valve (three-position cylinder)	RL	R 451–1
Rods for reversing valve (spring link rod)	RL	R 451–2
Rotation direction safeguard	RL	R 453
Cut-out servomotor (<u>with</u> starting fuel limiting device)	RL	● R 455
Cut-out servomotor (<u>without</u> starting fuel limiting device)	RL	● R 455–1
Control element (insert unit at EM manoeuvring stand) VPC-control	RL	● R 461–1
Control element (insert unit at EM manoeuvring stand) telegraph-rec.	RL	● R 461–3
Control element (cabinet OSC-2)	RL	● R 462–1
Control element (cabinet OSC-1)	RL	● R 462–2
Control element (load control transmitter) engine with CPP, KMW		● R 462–3
Control element (cabinet) with SBC	RL	● R 463
Control element (cabinet, arrangement)	RL	R 463–1
Control element (cabinet) VPC-control		● R 463–3
Control element (critical speed jump)	RL	R 463–4
Pneumatic manoeuvring unit (arrangement)	RL	R 464
Pneumatic manoeuvring unit	RL	R 464–1
Pneumatic control system PMU (reversing lever blocking)	RL	R 464–2
Overspeed and remote tachometer transmitter	RL	R 467
Emergency manoeuvring stand (reversing interlock)	RL	R 481
Emergency manoeuvring stand (arrangement of lever bearing)	RL	R 481–1
Tachometer drive	RL	R 491

Group 5

Governor drive (4–6 cylinder)		● R 511–5
Governor drive with booster (4–6 cylinder)		● R 511–6
Governor drive (7–10 cylinder)		● R 511–7
Governor drive with booster (7–10 cylinder)		● R 511–8
Safety cut-out device	RL	R 532
Fuel injection pump (housing and covers)		R 551–7
Fuel injection pump (driving piston, eccentric shaft)	RL	R 551–8
Regulating linkage for fuel injection pump		R 552–2
Fuel injection pump (fuel injection pump block)		R 553
Fuel pump (orifice, connections)		R 553–1
Fuel pump (closing pump)		○ R 553–2

Fuel injection pump (relief valve)	RL .	R 553-3
Load indicator	for f.p./regulating linkage	R 554
Setting plate	for f.p./regulating linkage	RL . R 554-2
Horizontal regulating linkage (arrangement)		R 581-6
Horizontal regulating linkage (arrangement intermediate regulating shaft)		R 581-7
Horizontal regulating linkage (intermediate reg. shaft with spring, bearing) ..	●	R 581-10
Horizontal regulating linkage (at EM manoeuvring stand) 7-12 cylinder	●	R 581-12
Horizontal regulating linkage (at EM manoeuvring stand) 4-6 cylinder	●	R 581-13
Variable injection timing		R 585-3

Group 6

Charge air receiver (valves)	RL .	R 646-2
Charge air receiver (<u>pneum.</u> air flap)	RL ●	R 646-4
Charge air receiver (switch box for <u>pneum.</u> air flap)	RL ●	R 646-5
Charge air receiver (valve and cover) with <u>mech.</u> air flap	●	R 646-8
Charge air receiver (relief valve)	HOERBIGER	RL . R 646-10
Charge air receiver (<u>mech.</u> air flap)	RL ●	R 646-11
Charge air receiver (switch box for <u>mech.</u> air flap)	RL ●	R 646-12
Charge air receiver (valves and covers) .. with <u>pneum.</u> air flap	RL ●	R 646-13
Charge air receiver (<u>mech.</u> flap drive)	RL ●	R 648
Charge air receiver (positioning cylinder for <u>mech.</u> flap drive)	RL ●	R 649-1
Arrangement of turbocharger		R 651-2

Group 7

Visual flow control for cylinder lubrication	RL .	R 721-1
Cylinder lubricating pumps drive	(7,8 cylinder)	● R 721-6
Cylinder lubricating pumps drive (coupling)	RL .	R 721-7
Cylinder lubricating pumps drive	(4-6 cylinder)	● R 721-8
Cylinder lubricating pumps drive	(9+10 cylinder)	● R 721-9
Cylinder lubricating pumps drive (gear pump)	RL .	R 725
Cylinder lubricating pumps drive (flow control valve)	RL .	R 726-1
Cylinder lubricating pumps drive (spring link rod arrangement)	RL .	R 726-2
Balancer (balancer shaft)	DRIVING END	○ R 770-1
Balancer (lub. oil pipe)		○ R 770-5
Balancer (driving wheel)	DRIVING END	○ R 770-6
Balancer (driving wheel)	FREE END	○ R 770-7
Balancer (balancer shaft)	FREE END	○ R 770-8
Balancer (chain tensioning device)		○ R 770-9

Group 8

Exhaust piping (cover for manhole)	RL .	R 811-1
Exhaust piping	(4 cylinder)	● R 811-10
Exhaust piping	(5 cylinder)	● R 811-11
Exhaust piping	(6 cylinder)	● R 811-12
Exhaust piping	(7+8 cylinder)	● R 811-13
Exhaust piping	(9+10 cylinder)	● R 811-14
Relief valve for starting air piping	RL .	R 869
Fuel pressure pipe	RL .	R 870-1
Fuel suction and spill piping		R 870-2
Pressure retaining valve	(fuel)	RL . R 877
Fuel shut-off cock		RL . R 877-1
Pressure gauge arrangement	for pressure retaining valve ..	RL . R 880
Pressure gauge arrangement (for main bearing- and control oil)	RL .	R 880-1

Pressure gauge arrangement	for charge air	RL .	R 880-2
U-tube pressure gauge	for charge air cooler	RL .	R 880-3
Pressure gauge arrangement	for cyl. lubr. pump drive	RL .	R 880-4

Group 9

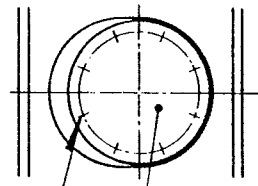
Arrangement of measuring instruments		●	R 920-1
Arrangement of measuring instruments ..	FUEL PUMP SIDE		R 920-5
Arrangement of measuring instruments ..	(4 cylinder)	●	R 920-6
Remote thermometer	for exhaust gas temperature .	RL .	R 920-9
Pressure gauge panel			R 921
Transmitter for remote rotation indicator		RL .	R 928-1
Transmitter for remote load indicator			R 928-2

Remarks:

- Attention is drawn to **diverse design execution alternatives**. It is necessary to determine which design execution has been fitted in the customer's engine.
- Attention is drawn to **special design executions**. These engine components **may but not must be built-in** (non-standard components).

Group 1

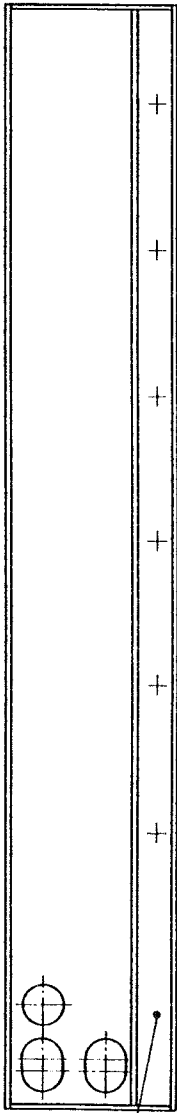
Plaque de fondation
 Grundplatte
 Bedplate
 Bancada



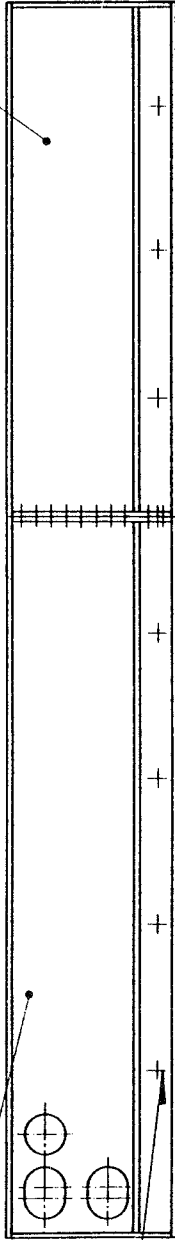
R 11105

R 11101
 R 11112

R 11300

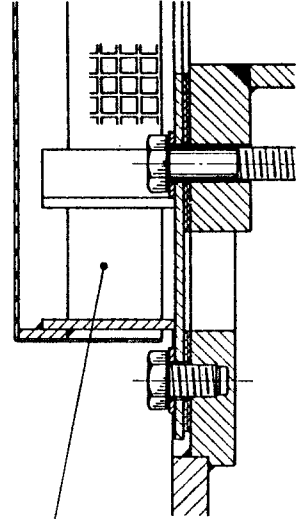


R 11400



R 11400

R 11101
 R 11112

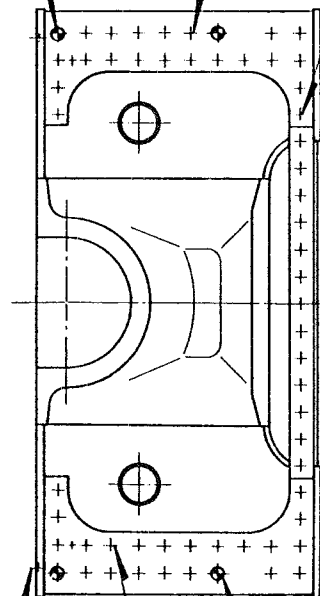


R 11227

R 11102

R 11103

R 11106



R 11403
 R 11410

R 11103

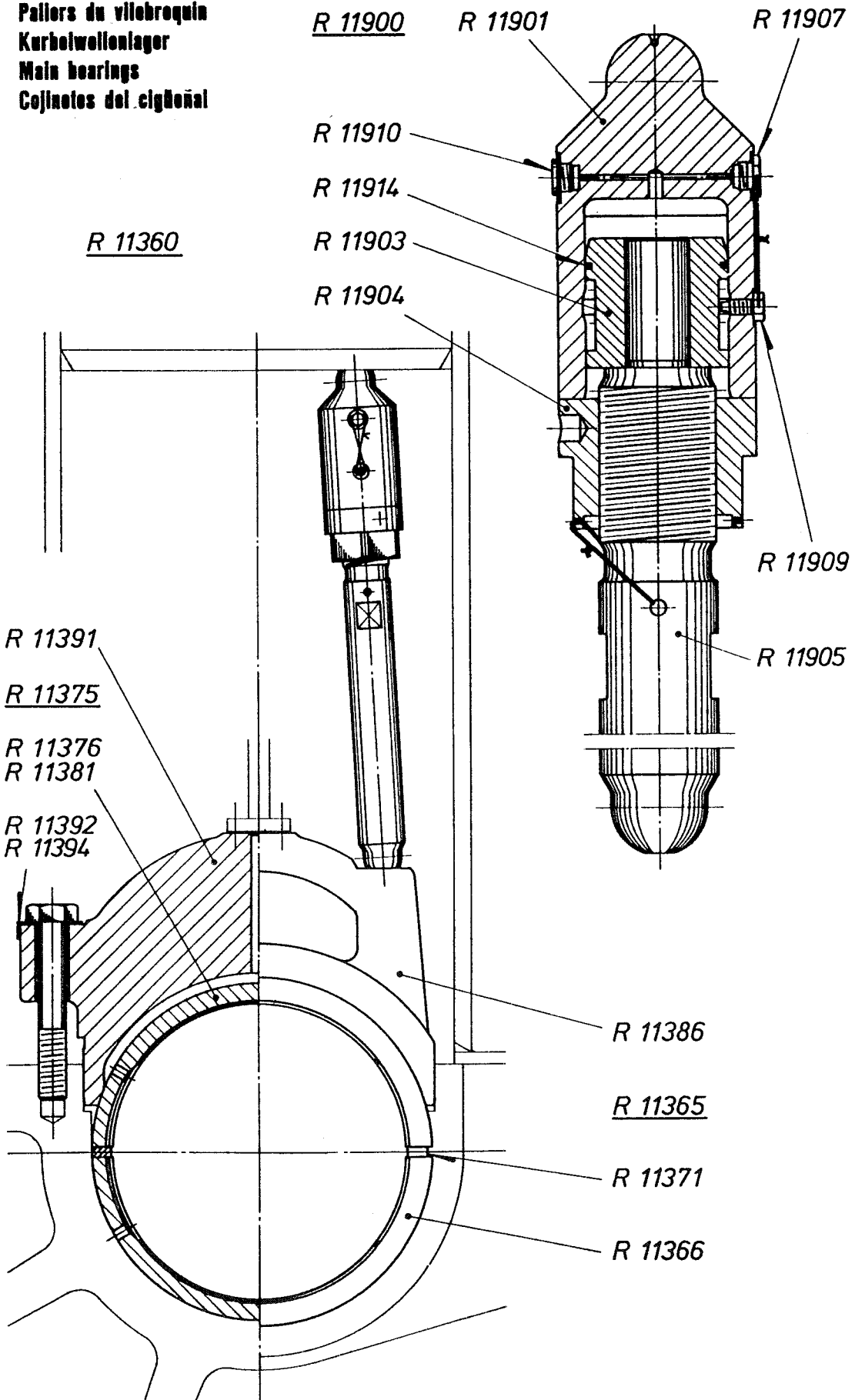
R 11106

R 111-2

Bedplate

- R 11101 Blind flange for bedplate
- R 11102 Connecting screw, compl. for bedplate
- R 11103 Connecting screw, compl. for bedplate
- R 11105 Screw, compl. for blind flange R 11101
- R 11106 Fitted bolt, compl. for bedplate
- R 11112 Joint for blind flange R 11101
- R 11227 Oil strainer, compl. for oil drain
- R 11300 Bedplate – Free end
- R 11400 Bedplate – Driving end
- R 11403 Screw plug for bedplate
- R 11410 Joint ring for crew plug R 11403

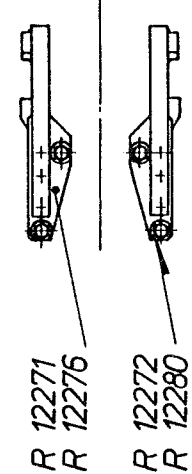
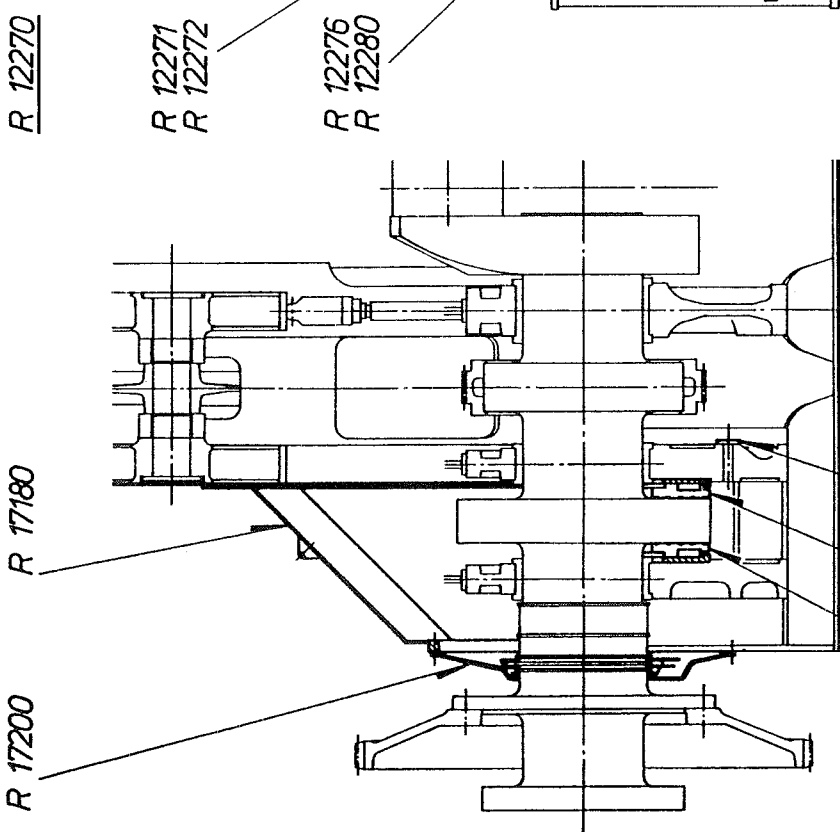
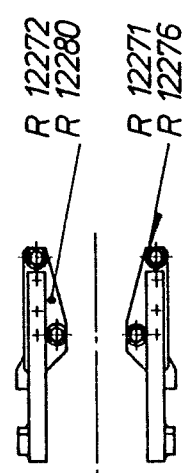
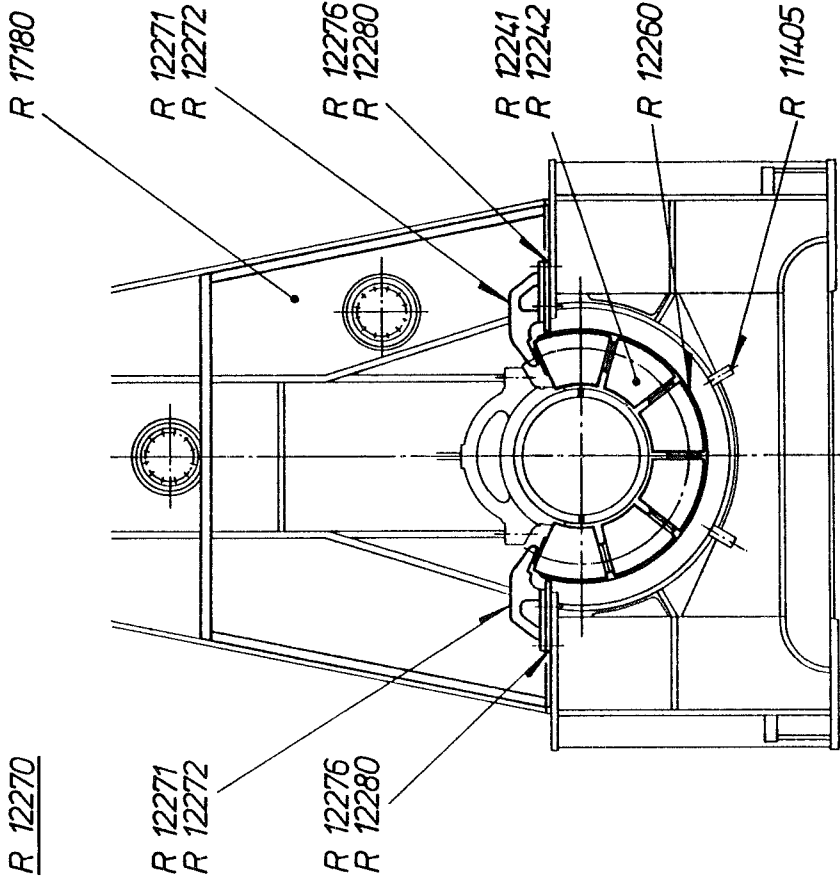
Paliers du vilebrequin
Kurbelwellenlager
Main bearings
Cojinetes del cigüeñal



Main bearing

- R 11360 Main bearing, complete
- R 11365 Main bearing in two parts, complete with shim
- R 11366 Bearing shell for main bearing R 11365
- R 11371 Shim for main bearing R 11365
- R 11375 Main bearing – driving end, in two parts, complete with shim
- R 11376 Bearing shell for main bearing – driving end R 11375
- R 11381 Shim for main bearing – driving end R 11375
- R 11386 Bearing cover for main bearing R 11365
- R 11391 Bearing cover for main bearing – driving end R 11375
- R 11392 Screw for bearing cover R 11391
- R 11394 Locking plate for screw R 11392
- R 11900 Jack bolt with hydraulic prestressing device, complete for bearing cover R 11386
- R 11901 Sleeve for jack bolt R 11900
- R 11903 Piston for jack bolt R 11900
- R 11904 Nut for jack bolt R 11900
- R 11905 Stud for jack bolt R 11900
- R 11907 Venting valve, complete, for jack bolt R 11900
- R 11909 Screw for jack bolt R 11900
- R 11910 Screw plug with spring washer, complete, for jack bolt R 11900
- R 11914 Piston sealing ring for piston R 11903

Palier de butée
 Drucklager
 Thrust bearing
 Cojinete de empuje



Zurückklotze
 Astern pads

Vorausklotze
 Ahead pads

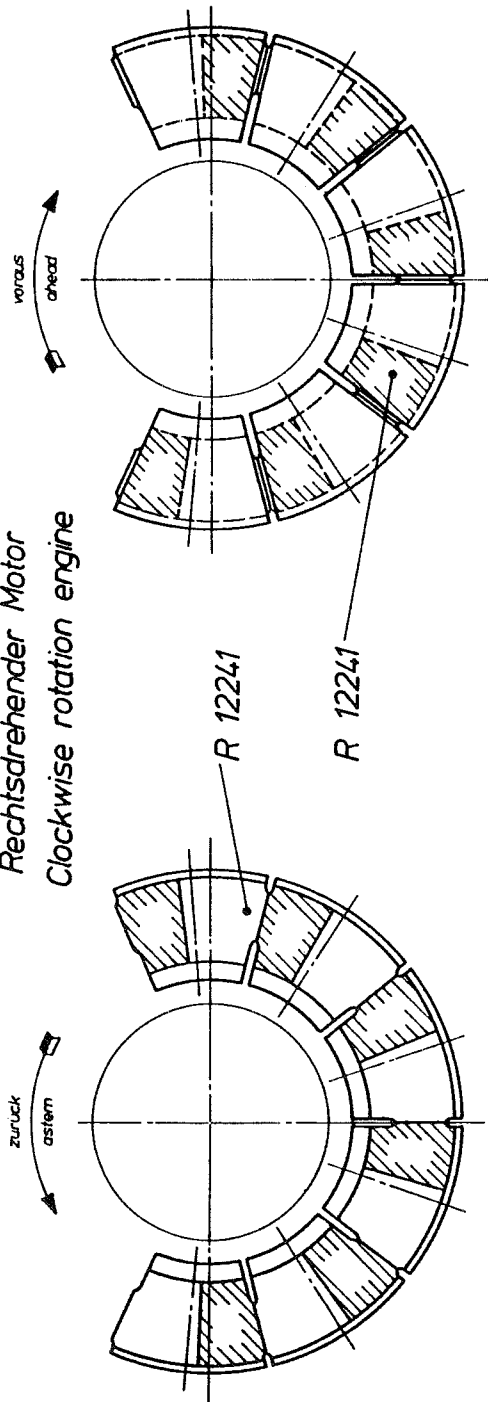
Thrust bearing

- R 11404 Blind flange for bedplate
- R 11405 Screw plug for bedplate
- R 11409 Joint ring for blind flange R 11404
- R 12241 Thrust pad for thrust bearing
- R 12242 Thrust pad for thrust bearing
- R 12260 Ring for thrust bearing
- R 12270 Stopper in thrust bearing, complete (R 12271 – R 12280)
- R 12271 Bracket on stopper
- R 12272 Bracket on stopper
- R 12276 Stop plate on bracket R 12271
- R 12280 Stop plate on bracket R 12272
- R 17180 End casing – Driving end, complete
- R 17200 Oil baffle, in two parts, for thrust bearing (Driving end)

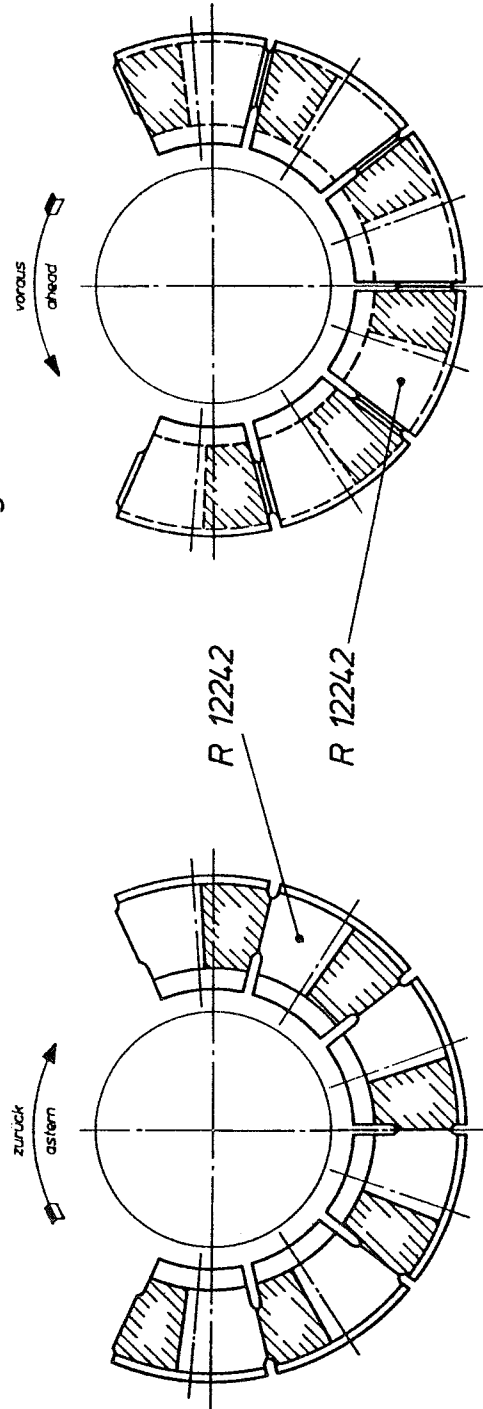
Pallier de butée
Drucklager
Thrust bearing
Cojinete de empuje

Détails
Details
Details
Detalles

Rechtsdrehender Motor
Clockwise rotation engine



Linksdrehender Motor
Counter clockwise rotation engine



● Thrust bearing

Details

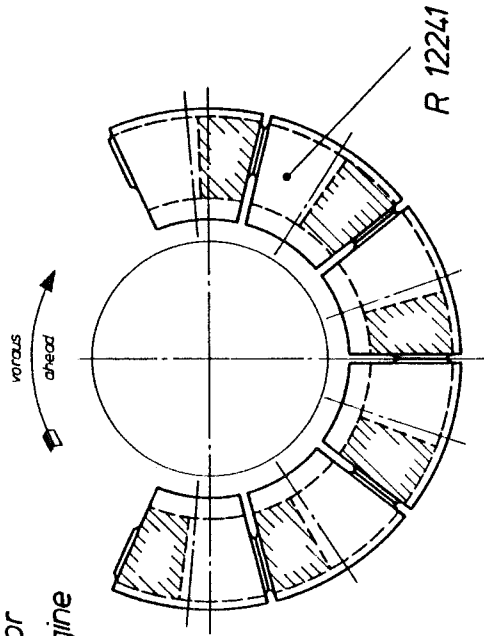
R 12241 Thrust pad (Clockwise rotation engine)

R 12242 Thrust pad (Counter clockwise rotation engine)

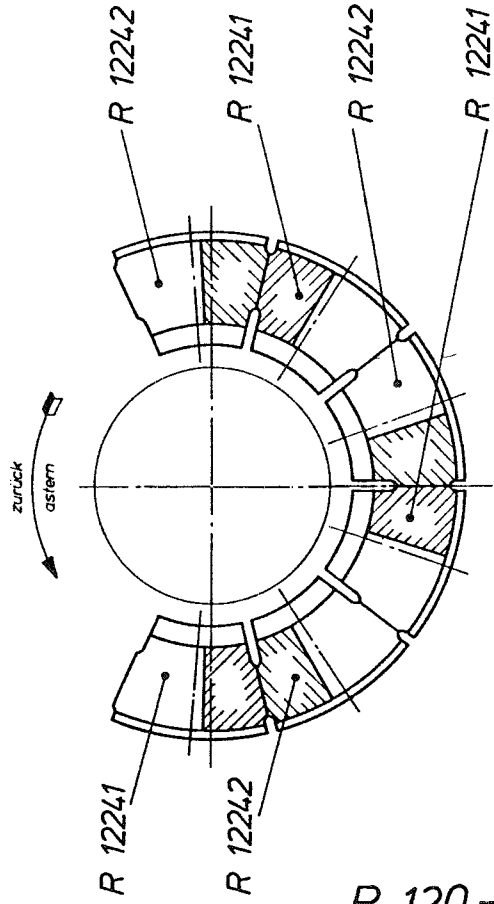
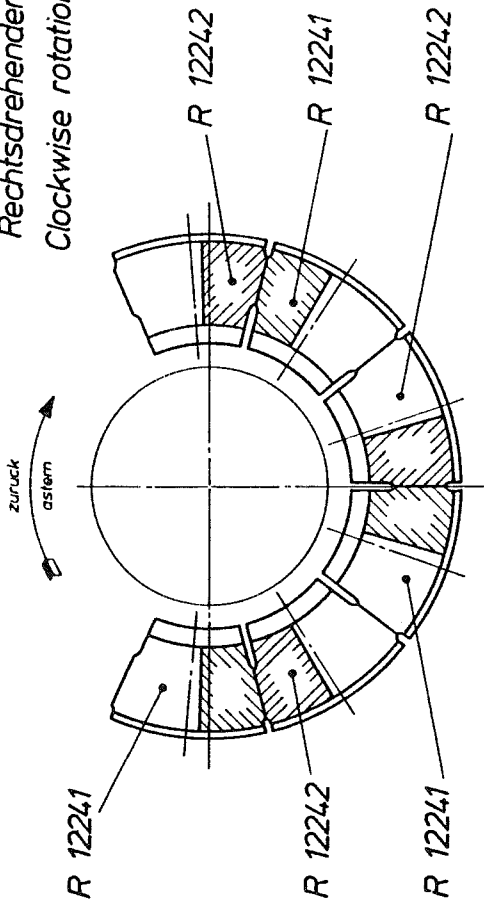
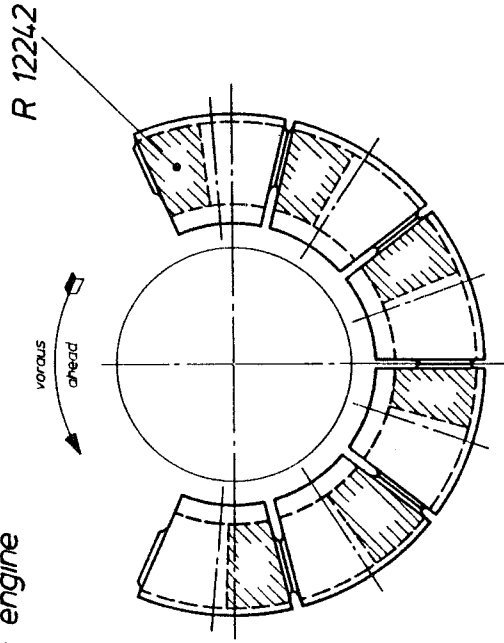
Palier de butée
 Drucklager
 Thrust bearing
 Cojinete de empuje

Détails
 Details
 Details
 Detalles

Rechtsdrehender Motor
 Clockwise rotation engine



Linksdrehender Motor
 Counter clockwise rotation engine



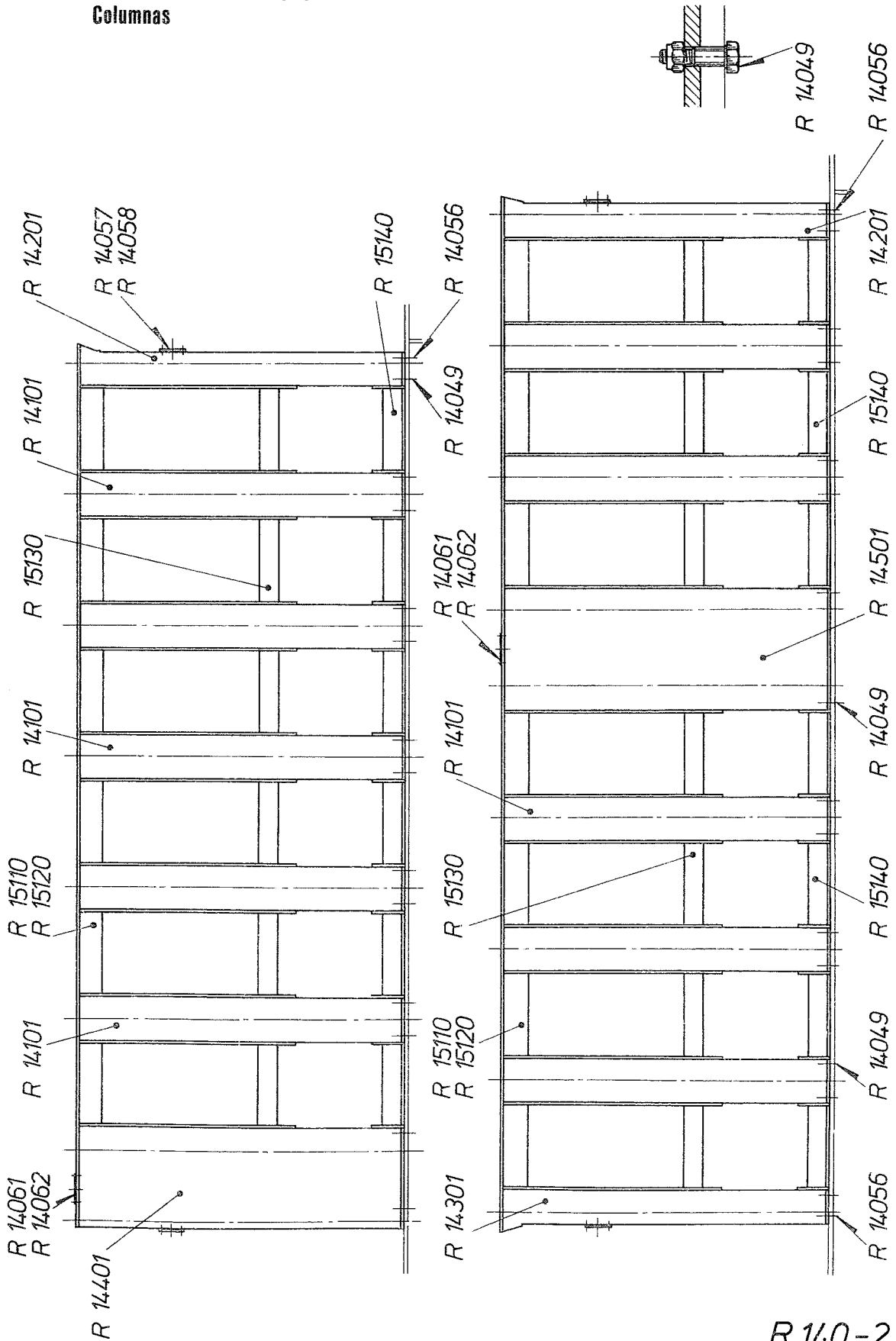
● Thrust bearing
Engine with controllable pitch propeller

Details

R 12241 Thrust pad

R 12242 Thrust pad

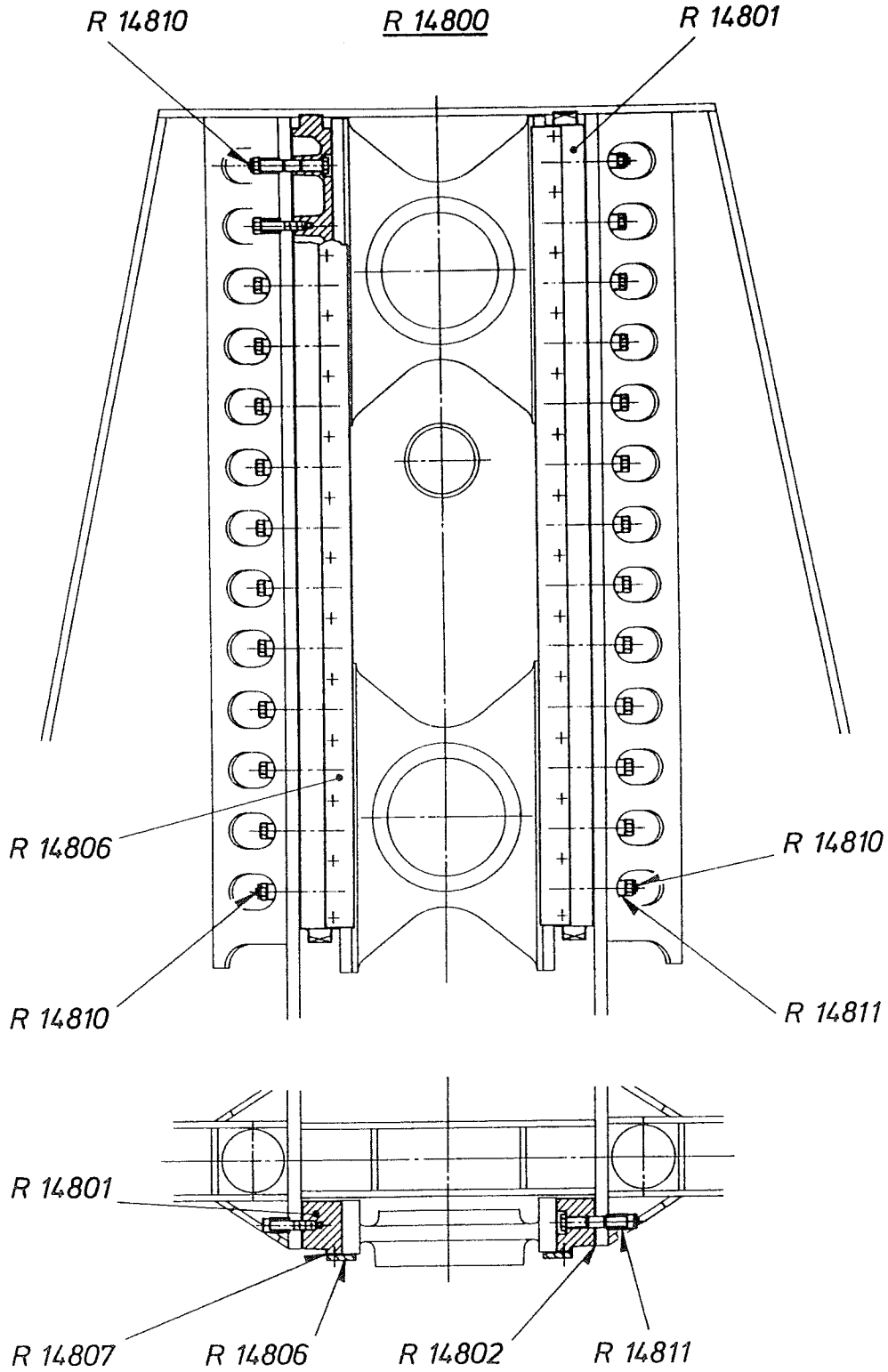
Bâti des cylindres moteurs
 Ständer zu den Arbeitszylindern
 Columns for the working cylinders
 Columnas



Engine frames for main cylinder

R 14049	Fitted bolt, complete
R 14056	Distance sleeve for the endcolumns
R 14057	Cover for the end columns
R 14058	Joint for cover R 14057
R 14061	Cover for double column
R 14062	Joint for cover R 14061
R 14101	Column
R 14201	End column – Free end
R 14301	End column – Driving end
R 14401	Double column – gear drive end
R 14501	Double column – gear drive centre
R 15110	Upper stiffening angle for the columns – fuel pump side
R 15120	Upper stiffening angle for the columns – exhaust side
R 15130	Middle stiffening bar for the columns
R 15140	Lower stiffening angle for the columns

Glissières pour cylindres moteurs
Gleitbahn zu den Arbeitszylindern
Crosshead guides for working cylinders
Guías de los patines de cruceta

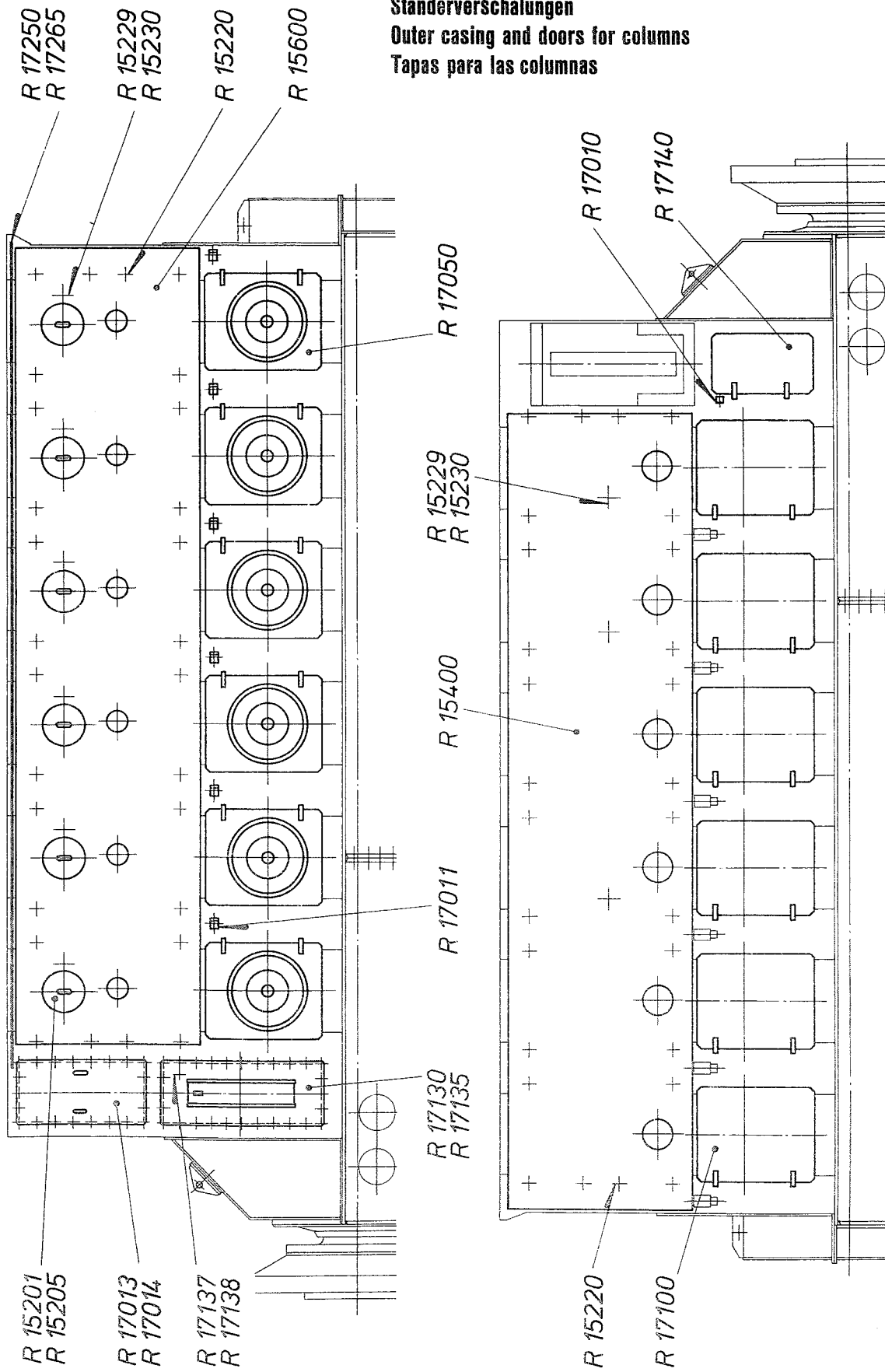


R 148-1

Guide bar for crosshead of the working cylinders

- R 14800 Arrangement of guide bar, complete
- R 14801 Guide bar for crosshead
- R 14802 1 set of shims, complete for guide bar
- R 14806 Guide rail for guide bar
- R 14807 1 set of shims, complete for guide rail
- R 14810 Fitted bolt, complete for guide bar
- R 14811 Distance sleeve for R 14810

Panneaux et plaques frontales pour bâtis
Ständerverschalungen
Outer casing and doors for columns
Tapas para las columnas



● Outer casings and doors for columns

R 15201	Inspection cover for stiffening plate – exhaust side R 15600
R 15205	Joint for inspection cover R 15201
R 15220	Fitted bolt, complete for the stiffening plates
R 15229	Screw plug for the stiffening plates
R 15230	Joint ring for screw plug R 15229
R 15400	Stiffening plate for the columns – fuel pump side
R 15600	Stiffening plate for the columns – exhaust side
R 17010	Door clip for casing door – fuel pump side R 17140
R 17011	Door clip for crankcase door – exhaust side R 17050
R 17013	Cover on double column – exhaust side
R 17014	Joint for cover R 17013
R 17050	Crankcase door, complete – exhaust side
R 17100	Crankcase door, complete – fuel pump side
R 17130	Casing on double column – exhaust side
R 17135	Joint for casing R 17130
R 17137	Screw plug for casing R 17130 (RL76)
R 17138	Joint ring for screw plug R 17137 (RL76)
R 17140	Casing door, complete – fuel pump side
R 17250	Oil collector rail on frame
R 17265	Joint for oil collector R 17250