



132 HP



51,600 lbs.

821_{R-HD}

C Series

***green line* Material Handling Machine**



SEIBOGEN[®]

LEADING THROUGH INNOVATION

- Working radius up to 44'
- No computers required to control hydraulic system
- Ultra fine hydraulic oil filtration system reduces maintenance cost and down time of machine
- Central lubrication system standard
- State-of-the-art load-sensing hydraulic system
- Powerful maintenance-friendly design
- Low noise emission

Specifications



Engine

- 4 cylinder, water cooled, Tier III, QSB 4.5 Cummins diesel engine
- Output as per DIN/ISO:
132 HP at 2200 rpm (97 kW/2000min-1)
- Radiator fan is hydraulically driven and is reversible to clean out debris from radiator
- Equipped with engine intercooler
- Dry air filter with cyclone prefilter, safety element and pollution indicator
- Fuel tank capacity: 80 gallons
- Electrical system:
24 volt, 2 x 12 volt high performance batteries



Hydraulic System

- Computer free load-sensing hydraulic system with energy saving flow on demand control and pressure cut off function
- All working functions can be operated simultaneously and be individually controlled very precisely due to the independent and proportional split of the oil feed from the variable displacement pump
- Hydraulic system designed for low pressure losses and heat generation by large diameter piping and hoses as well as large control valves
- Pilot operated joy sticks control all working and auxiliary functions
- Flow rate 1 x 82 gpm
- Working pressure 5076 psi
- Hydraulic tank capacity 66 gallons
- Special ultra fine filtration system (99.95% efficiency at 2 micron) designed to protect the hydraulic system, extending the life of all components and reducing the down time of the machine as well as the maintenance and repair costs
- Full flow return oil filters with extended change intervals
- Oversized hydraulic oil cooler, mounted completely separated from the water radiator, maintaining the oil temperature at an ideal level. The fan is hydraulically driven and thermostatically controlled
- Centralized pressure test ports, easily accessible from ground level, mounted and well protected on the left side of the machine, enable fast trouble shooting of all machine functions without any electronic support



Swing System

- Axial piston motor, spring-loaded hydraulically releasable multiple-disk brake, planetary gear and pinion shaft
- Large dimensioned swing bearing
- Swing speed 0 - 8 rpm, infinitely controllable
- Hydraulic motor with integrated hydraulic brake valves keep wear and tear of braking system to a minimum



Undercarriage

- R25 wide gauge crawler undercarriage as rigid, torsion-free box-type design
 - Maintenance-free crawler B4HD track shoes 2' (600 mm), crawler length 14'6"
- Option:
- Each track is independently driven by an axial piston motor through a compact-planetary gear. The drives are integrated into the track frames
 - Lockable storage compartment
 - Spring-loaded hydraulically releasable multiple disk brakes as safety parking brakes
 - Hydraulic brake valves protect the drive motors on steep gradients

Travel speeds vary infinitely:

- 0 - 1.1 mph
- 0 - 1.5 mph



Uppercarriage

- Torsion-free upper frame with continuous bearing-plates for optimal power introduction, precision machined
- Steel bushings for the boom pivot
- Low noise emission



Working Equipment

- Box-type design with large dimensioned sealed bearings for long working life
- Grapple open-close and rotate circuits installed on the machine
- Working cylinders with hydraulic end position damping
- Optimized design for high lifting capacities
- Equipped standard with safety check valves (load holding valves) for boom and stick cylinders
- The 821 R-HD C Series material handling equipment has been specially designed for the increased demands of high-performance operation, increased productivity and output



Magnet System

- 13 kW generator/controller package, belt driven for easy operation and maintenance



Grapple

- 0.5 and 0.75 cu. yd. scrap grapple with rotation, 4 or 5 time, open, semi-closed or closed, depending on the weight of the grapple and operating reach
- Log grapple available in different sizes and configurations depending on material being handled
- Contact Sennebogen for approval of the attachment before operating the machine
- Always refer to the lifting capacities on the chart before installing any attachment



Operating Weight

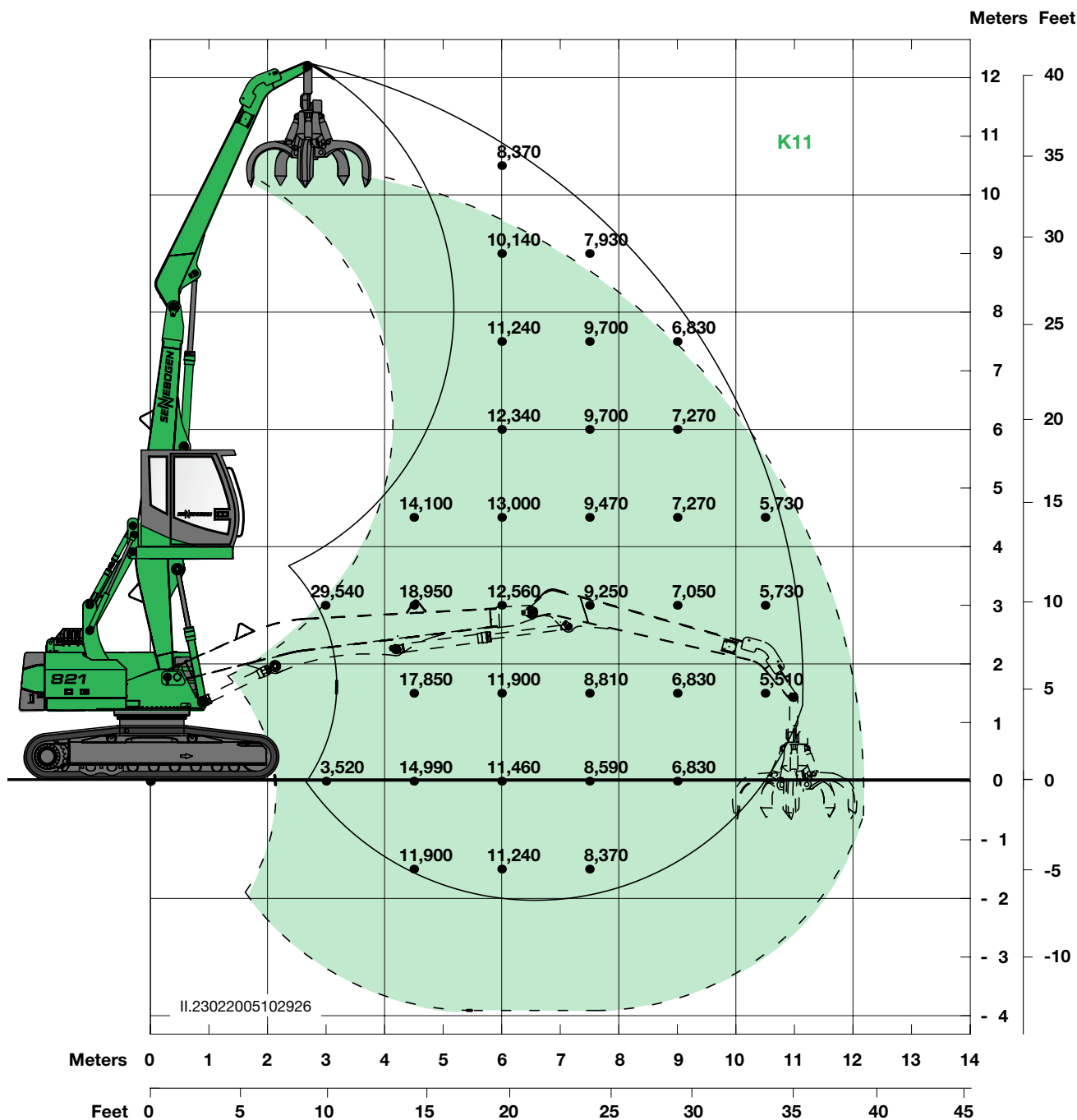
- Basic 821 R-HD with R25 wide gauge crawler undercarriage, material handling boom 21', stick 15'9" and scrap grapple 0.75 cu. yd.

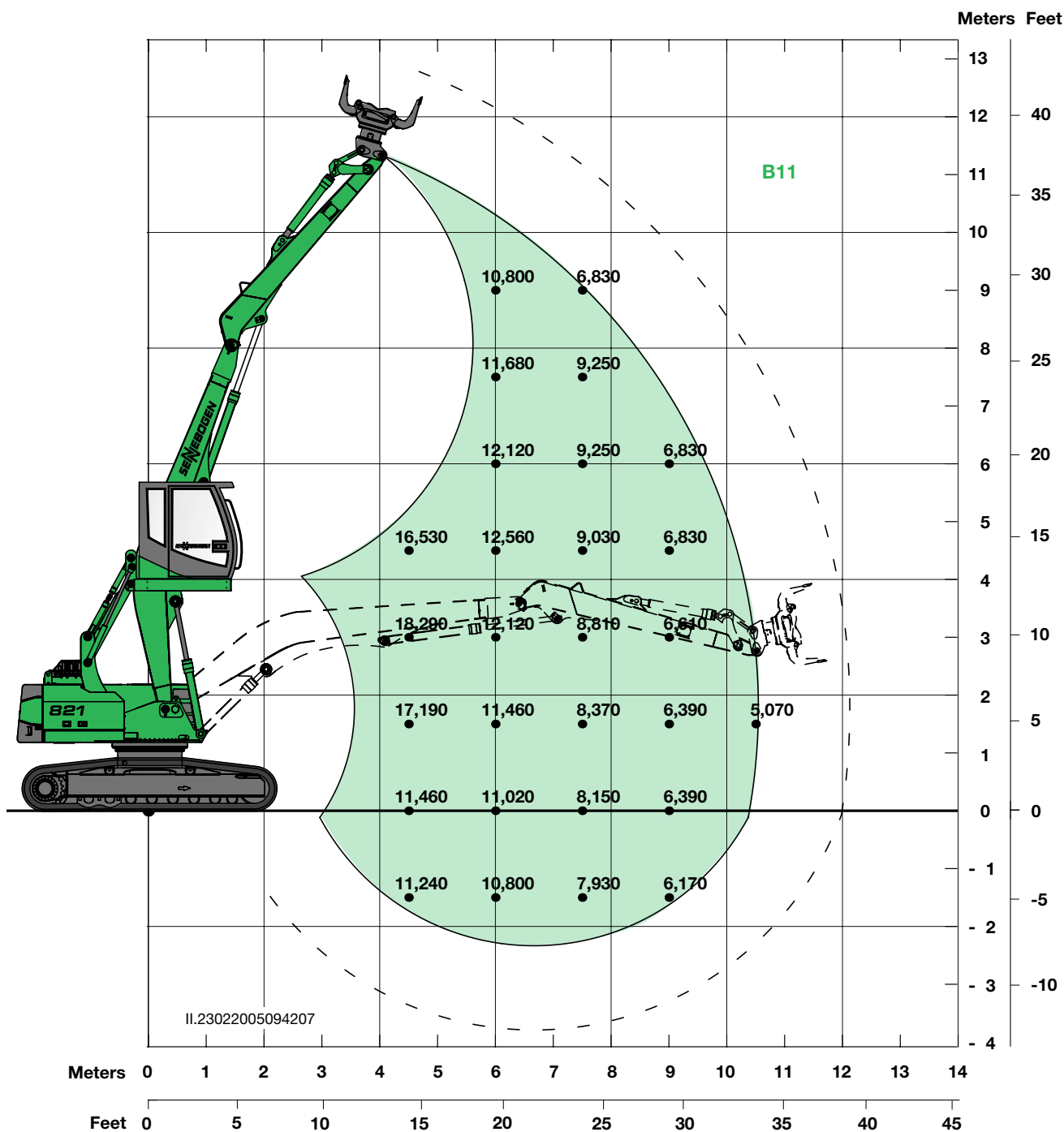
Approximate weight 51,600 lbs.
Given weights may vary with different equipment



Operator's Cab

- Comfortable F2000 operator's cab resiliently mounted
- Sound absorbing insulation
- Roomy compartment with excellent all-round visibility
- All weather design with tinted safety glass
- Door window as sliding window
- Windshield can be pushed up under cab roof
- Large skylight
- Windshield wiper/washer on both windshield and skylight
- Sun visor
- Large capacity storage bin
- Ergonomically designed, air suspension and heated seat with adjustable armrests and lumbar support
- Well laid out instrument panel with ergonomically shaped joy sticks
- Infinitely variable cab heating system, outside air and circulating air stages with particle filter
- Five adjustable air vents for optimum work environment
- New Sennebogen Diagnostic System (SDS) for monitoring all essential machine and engine functions with visual and audible warning system
- 12 and 24 volt power supply
- Air conditioning
- AM/FM radio with CD player

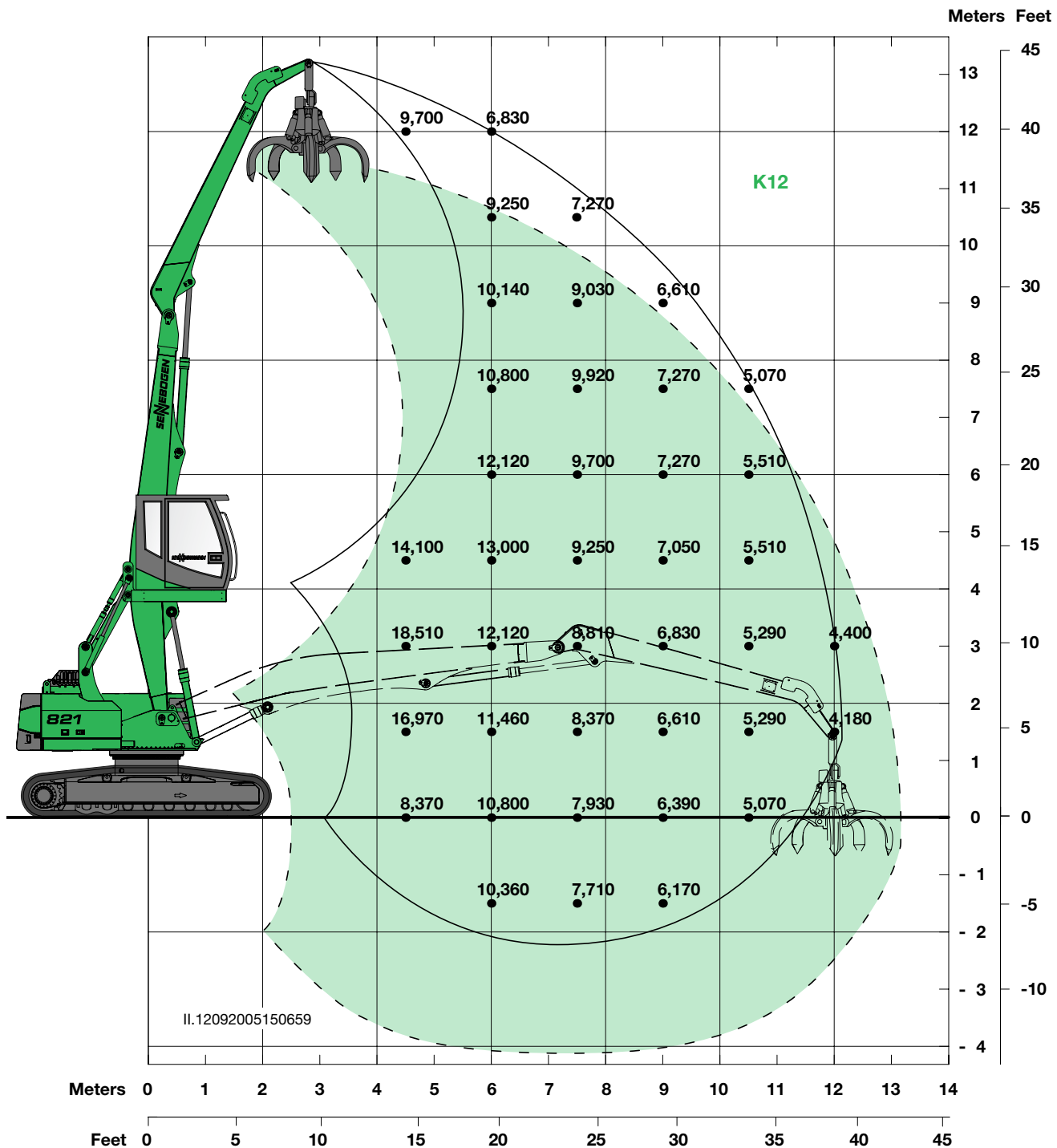




With disassembled reversing mechanism, the rated loads have to be raised by approximately 550 lbs.

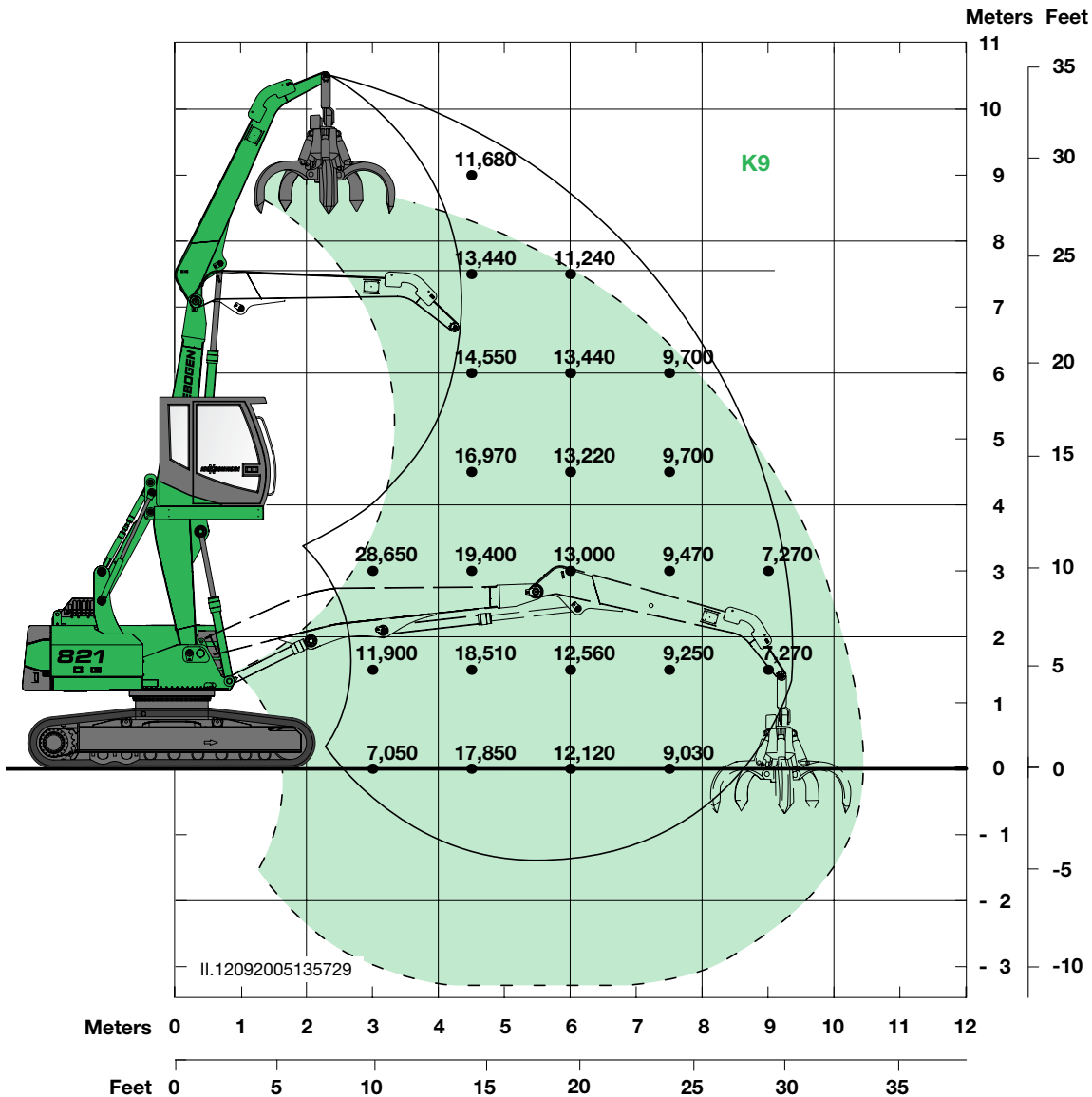
821 R-HD

- Undercarriage: R25 wide gauge crawler undercarriage, crawler length 14'6"
- Boom: 21' banana type
- Stick: 13'9" with reversing mechanism
- Cab: C 270 hydraulic elevating cab with operator's eye level 18'4"



821 R-HD

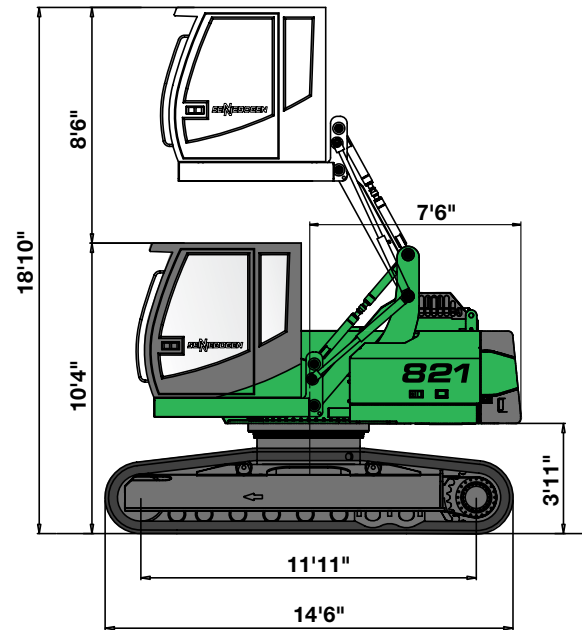
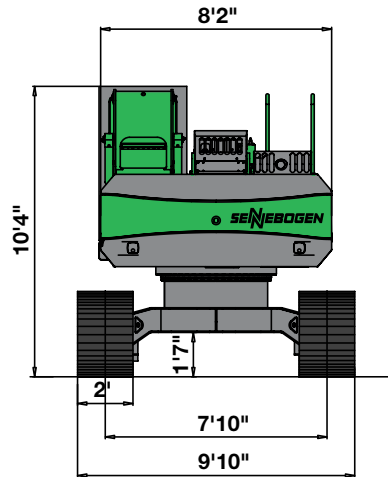
- Undercarriage: R25 wide gauge crawler undercarriage, crawler length 14'6"
- Boom: 23'4"
- Stick: 16'9"
- Cab: C 270 hydraulic elevating cab with operator's eye level 18'4"



821 R-HD

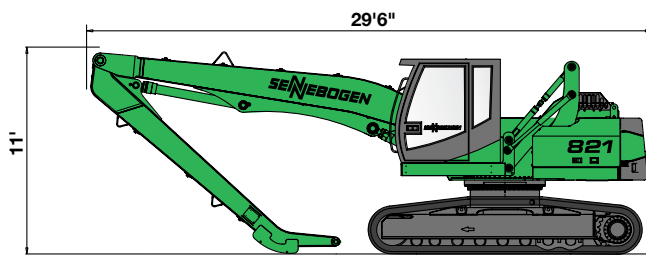
- Undercarriage: R25 wide gauge crawler undercarriage, crawler length 14'6"
- Boom: 17'9"
- Stick: 13'1"
- Cab: C 270 hydraulic elevating cab with operator's eye level 18'4"

Machine Specifications

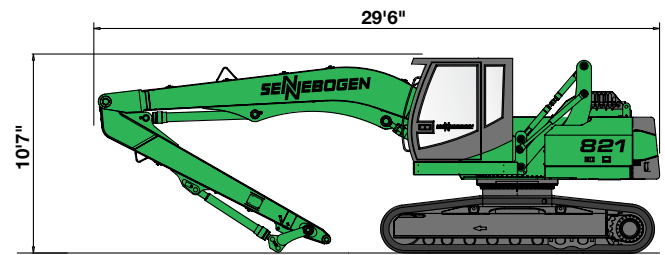


- 821 R-HD with wide gauge crawler undercarriage R25 and with 8'6" hydraulic elevating Cab Type C270
- 821 R-HD available with optional hi-rise cab – height 3'3", 4'11" and 6'7". Hydraulic tilting mechanism is standard on all hi-rise cabs

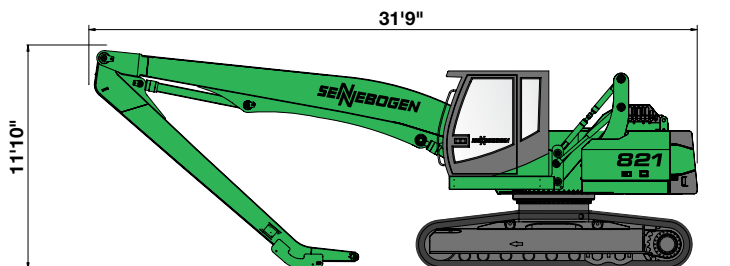
Shipping Specifications



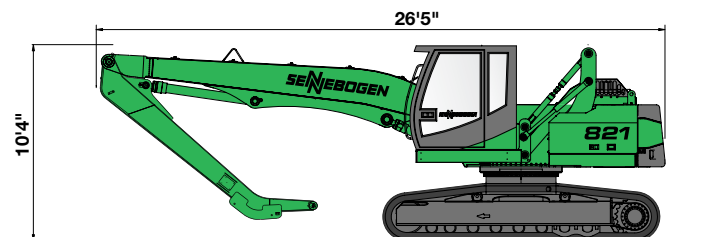
821 R-HD with Boom 21' and Stick 15'9"



821 R-HD with banana Boom 21' and Stick 13'9"



821 R-HD with Boom 23'4" and Stick 16'9"



821 R-HD with Boom 17'9" and Stick 13'1"

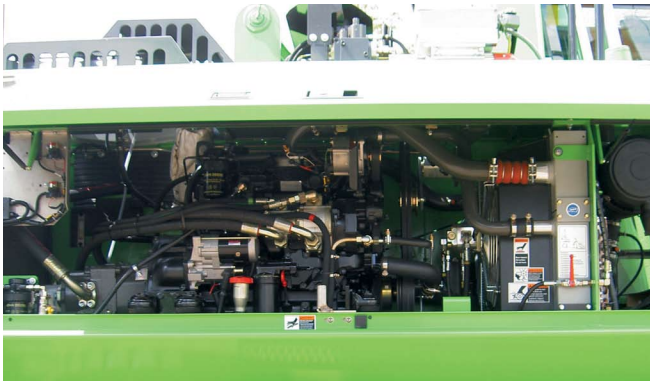


Comfortable F2000 operator's cab

- Advanced design, clear layout
- Low noise and vibration
- Excellent all-round visibility
- Fully adjustable air suspension seat, heated
- Heating and air conditioning with fresh / recirculation airflow and air filter

Serviceability

- The C Series machines offer a coarse particle separator at the front of engine cooler and air filter
- Ease of access for air filter and battery maintenance
- Hydraulic oil cooler separated from radiator, mounted on the left side towards the back of the machine, hydraulically driven and easy to clean
- The radiator fan is reversible and controlled from the cab, allowing the driver to clean out any debris from the radiator compartment



Large engine compartment

- Powerful water-cooled Cummins diesel engine longitudinally mounted for ease of access
- Daily service conveniently and easily performed from ground level
- Large access door with gas shocks provide easy access to engine compartment

Left side compartment holds key components

- Diesel tank
- Electrical box with all fuses and relays for easy access and centralized electrical maintenance
- Central lubrication system
- Centralized pressure test ports for trouble shooting of all working functions



SENNEBOGEN LLC
2835 Jeff Adams Drive
Charlotte, NC 28206

Telephone (Toll Free) 1-877-309-0099

Fax: 704-347-8894

E-Mail: sales@sennbogen-na.com

Under our policy of continuous improvement, we reserve the right to change specifications and design without prior notice. The illustrations shown may include optional equipment.

www.sennbogen-na.com