

**HONDA**  
**MARINE**



**BF outboard Honda marine motors  
SERIAL NUMBER LOCATOR  
TECH SPECIFICATION**

**Technical Library**

**<http://engine.od.ua>**



## SERIAL NUMBER LOCATOR For outboard Honda marine motors

All model names start with "BF" but these two letters do not appear on the engine cover sticker.



"BF2"

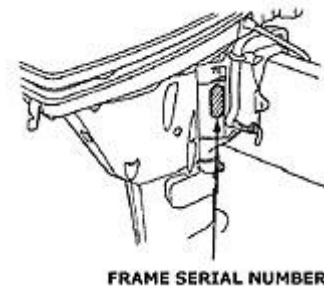
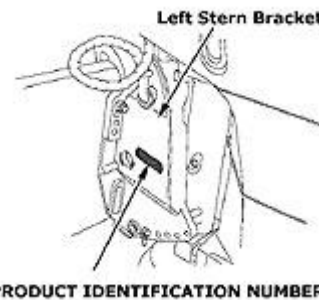


"BF75"



"BF50"

The frame serial number is found on or near the stern bracket, stamped into a metal plate. The number uses the form "BXXX-XXXXXXXX" and may also be referred to as the product identification number.



SPECIFICATION ITEM	MODEL UNIT	BF175/200/225	BF135/150	BF115/130AX	BF 75-90A1	BF 35- 45 / 40-50A4
BORE AND STROKE	MM	89 x 93	87 x 99	86 x 97	75 X 90	70 x 70
CAPACITY	CC	3471	2354	2254	1,590	808
ENGINE OIL CAPACITY -AT DRAINING	LITRE	7.6	6.5	5.6	4	2.0
AT OIL FILTER CHANGE	LITRE	7.8	6.7	6.5	4.5	2.2
OIL FILTER PART NUMBER	PART NUMBER	15400-PR3-004	15400-PLC-003	15400-PR3-004	H1540PR3T01	H1540PR3T01
VALVE CLEARANCE - INTAKE	MM	0.20 - 0.24	0.21 - 0.25	0.24 - 0.28	0.18 - 0.22	0.13 - 0.17
VALVE CLEARANCE - EXHAUST	MM	0.28 - 0.32	0.28 - 0.32	0.28 - 0.32	0.26 - 0.30	0.21 - 0.22
FUEL FILTER (low pressure)	PART NUMBER	16911-ZY3-003	16911-ZY3-003	16900-SR3-004	16900-SA5-004	16900-SA5-004
FUEL FILTER (high pressure)	PART NUMBER	16711-ZY3-000	16911-ZY3-000	16010 -ST5-933	N/A	N/A
CARBURETOR - FLOAT LEVEL	MM	N/A	N/A	N/A	11.5	14
- PILOT ADJUSTMENT	TURNS	N/A	N/A	N/A	1 7/8 - 2 1/4	2 1/8
- IDLE RPM	RPM	600-700	700 - 800	700 - 800	900 - 1000	900 - 1000
IGNITION - SPARK PLUG	NGK	IZF6F-11	IZFR6K11	ZFR7F	DR-7EA	DR-7EA
	ND	VKJ20RZ-M11	SKJ20DR11	N/A	X22ESR-U	X22ESR-U
SPARK PLUG GAP	MM	1.0 - 1.1	1.0 - 1.1	0.7 - 0.8	0.6 - 0.7	0.6 - 0.7
AIR GAP	MM	N/A	N/A	N/A	0.7 - 0.8	N/A
IGNITION TIMING	°BTDC	10o @ 650 RPM	0 +/- 2 @ 750 RPM	N/A	5° - 29°	5° - 32°
PULSE GENERATOR RESISTANCE	Ω	N/A	N/A	950 - 1170	168 - 252	288 - 352
EXCITER COIL RESISTANCE	Ω	N/A	N/A	N/A	N/A	168 - 227
CHARGING COIL RESISTANCE	Ω	N/A	N/A	N/A	0.46 - 0.69	0.20 - 0.26
REG/REC REGULATED VOLTAGE	V	12	12	12	12	12
CHARGE COIL / ALTERNATOR	AMPS	60	40	45	16	10
IGNITION COIL RESISTANCE - PRIMARY	Ω	N/A	N/A	0.60 - 0.72	0.35 - 0.43	0.19 - 0.23
SECONDARY WITH PLUG CAP	KΩ	N/A	N/A	25 - 38	23.1 - 34.7	2.8 - 3.4
GEAR CASE OIL CAPACITY	LITRE	1.17	0.98	0.95	0.95	0.52
COMPRESSION	PSI	198-277	222-250	199 - 228	199 - 226	199 -226

SPECIFICATION ITEM	MODEL UNIT	BF 25-30 D4	BF 25 - 30 A	BF15-20 A4	BF9.9 - 15	BF 8 - 10D
BORE AND STROKE	MM	61x63	58 x 63	59 x 64	58 x 53	58 x 42
CAPACITY	CC	552	499	350	280	222
ENGINE OIL CAPACITY -AT DRAINING	LITRE	1.6	1.6	1.0	1.1	1
AT OIL FILTER CHANGE	LITRE	1.9	1.9	1.3	N/A	1.3
OIL FILTER PART NUMBER	PART NUMBER	15400PFB004	15400PFB004	15400PFB004	N/A	15400-PFB-004
VALVE CLEARANCE - INTAKE	MM	0.10- 0.14	0.10 - 0.14	0.15 - 0.19	0.10 - 0.14	0.15 - 0.19
VALVE CLEARANCE - EXHAUST	MM	0.18 - 0.22	0.18 - 0.22	0.21 - 0.25	0.18 - 0.22	0.21 - 0.25
FUEL FILTER (low pressure)	PART NUMBER	16910-ZV4-015	16910-ZV4-015	16910-ZV4-015	16910-ZV4-015	16910-ZV4-015
FUEL FILTER (high pressure)	PART NUMBER	N/A	N/A	N/A	N/A	N/A
CARBURETOR - FLOAT LEVEL	MM	14	14	13.7	13.0 - 15.0	13.5
- PILOT ADJUSTMENT	TURNS	2 1/4	2	2 1/4	2 3/4	2 3/4
- IDLE RPM	RPM	900-1000	850 - 950	850 - 950	1050 - 1150	850 - 950
IGNITION - SPARK PLUG	NGK	DR-7EA	DR-7EA	CR5EH-9	DR6HS	CR5EH-9
	ND	X22ESR-U	X22ESR-U	U16FER9	X20FSR-U	U16FER9
SPARK PLUG GAP	MM	0.6 - 0.7	0.6 - 0.7	0.8 - 0.9	0.6 - 0.7	6.8 - 0.9
AIR GAP	MM	N/A	N/A	N/A	N/A	N/A
IGNITION TIMING	°BTDC	5° - +/- 2	5° - 26°	0 +/- 2	5° - 35°	0°
PULSE GENERATOR RESISTANCE	Ω	617 - 758	290 - 355	351 - 429	351 - 429	351 - 429
EXCITER COIL RESISTANCE	Ω	6.12 - 7.48	270 - 368	6.1 - 7.5	207 - 253	6.1 - 7.5
CHARGING COIL RESISTANCE	Ω	0.27 - 0.33	0.27 - 0.33	0.2 - 0.3	0.33 - 0.41	0.23 - 0.43
REG/REC REGULATED VOLTAGE	V	12	12	12	12	12
CHARGE COIL / ALTERNATOR	AMPS	4M - 10E	6 -10	6 - 12	6 - 10	6 - 12
IGNITION COIL RESISTANCE - PRIMARY	Ω	0.19 - 0.23	0.19 - 0.23	0.8 - 1.0	0.35 -0.43	0.35 - 0.43
SECONDARY WITH PLUG CAP	KΩ	28.0 - 34.0	10.3 - 15.9	23.0 - 34.8	8.01 - 9.79	23.0 - 34.8
GEAR CASE OIL CAPACITY	LITRE	0.27	0.29	0.28	0.24	0.26
COMPRESSION	PSI	128M - 213E	178 - 206	185 - 213	151	151

SPECIFICATION ITEM	MODEL UNIT	BF 8	BF 7.5 - 10	BF 5	BF 2D	BF 2
BORE AND STROKE	MM	56 x 38	56 x 40	60 x 45	45.0 x 36.0	46 x 46
CAPACITY	CC	197	197	127	57	76
ENGINE OIL CAPACITY -AT DRAINING	LITRE	0.8	0.8	0.55	0.25	0.4
AT OIL FILTER CHANGE	LITRE	N/A	N/A	N/A	N/A	N/A
OIL FILTER PART NUMBER	PART NUMBER	N/A	N/A	N/A	N/A	N/A
VALVE CLEARANCE - INTAKE	MM	0.06 - 0.1	0.06 - 0.1	0.06 - 0.14	0.06 - 0.10	0.08 - 0.16
VALVE CLEARANCE - EXHAUST	MM	0.06 - 0.1	0.06 - 0.1	0.11 - 0.19	0.09 - 0.13	0.08 - 0.16
FUEL FILTER (low pressure)	PART NUMBER	16910-ZV4-015	16910-GB2-005	16910-GB2-005	16952-ZE6-000	16952-ZE6-000
FUEL FILTER (high pressure)	PART NUMBER	N/A	N/A	N/A	N/A	N/A
CARBURETOR - FLOAT LEVEL	MM	9.8 - 10.5	9.8 - 10.5	9.0 - 11.0	12	10.5 - 13.5
- PILOT ADJUSTMENT	TURNS	Highest idle speed	Highest idle speed	2.375	2.5	2.125
- IDLE RPM	RPM	1100 - 1300	1100 - 1300	1200 - 1400	1900 - 2100	1300 - 1500
IGNITION - SPARK PLUG	NGK	DR-5HS	DR - 5HS	BPR5ES	CR5HSB	BMR-4A
	ND	N/A	N/A	W16EPR-U	U16FSR-UB	N/A
SPARK PLUG GAP	MM	0.6 - 0.7	0.6 - 0.7	0.7 - 0.8	0.6 - 0.7	0.6 - 0.7
AIR GAP	MM	N/A	N/A	0.2 - 0.6	0.3 - 0.5	0.2 - 0.6
IGNITION TIMING	°BTDC	15° - 35°	15° - 35°	25°	27°	20°
PULSE GENERATOR RESISTANCE	Ω	108 - 132	108 - 132	N/A	N/A	N/A
EXCITER COIL RESISTANCE	Ω	297 - 363	297 - 363	N/A	N/A	N/A
CHARGING COIL RESISTANCE	Ω	0.13 +/- 10%	0.13 +/- 10%	0.2 - 0.4	N/A	N/A
REG/REC REGULATED VOLTAGE	V	12	12	12	N/A	N/A
CHARGE COIL / ALTERNATOR	AMPS	5	5	3	N/A	N/A
IGNITION COIL RESISTANCE - PRIMARY	Ω	0.56 +/- 10%	0.56 +/- 10%	0.8 - 1.0	0.98 - 1.2	0.7 - 0.9
SECONDARY WITH PLUG CAP	KΩ	0.8 +/- 10%	0.8 +/- 10%	5.9 - 7.1	11 - 12	6.3 - 7.7
GEAR CASE OIL CAPACITY	LITRE	0.23	0.23	0.1	0.41	0.05
COMPRESSION	PSI	151	151	50 - 78	128	92.4