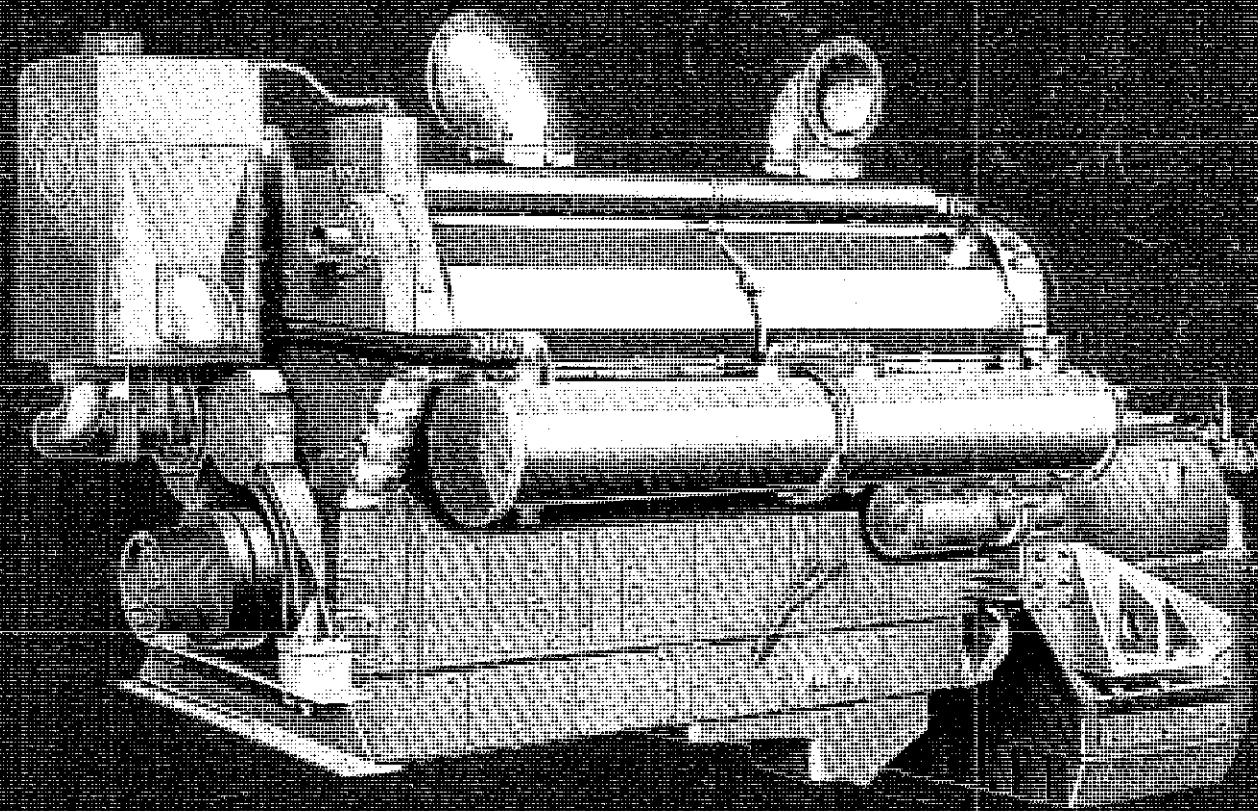


# Detroit Diesel Engines

marine models

12V-149

800 hp



Typical 12V-149  
Marine Model

# specifications

Basic Engine	12V-149 Workboat	12V-149 Crewboat
Model	9122-7000	9122-7000
Engine Type	Two Cycle	Two Cycle
Number of Cylinders	12	12
Bore and Stroke	5.75 in x 5.75 in (146mm x 146mm)	5.75 in x 5.75 in (146mm x 146mm)
Displacement	1792 cu in (29.39 litres)	1792 cu in (29.39 litres)
Rated Gross Power: SAE: 85°F (29.4°C) and 29.00 in Hg (98.19 kPa) Bar. (Dry)		800 BHP (597 kW) @ 1900 RPM
Rated Net Power: SAE: 85°F (29.4°C) and 29.00 in Hg (98.19 kPa) Bar. (Dry)		770 SHP (574 kW) @ 1900 RPM
Continuous Gross Power: SAE: 85°F (29.4°C) and 29.00 in Hg (98.19 kPa) Bar. (Dry)	700 BHP (522 kW) @ 1800 RPM	
Continuous Net Power: SAE: 85°F (29.4°C) and 29.00 in Hg (98.19 kPa) Bar. (Dry)	675 SHP (504 kW) @ 1800 RPM	
Compression Ratio	17 to 1	17 to 1
Net Weight (dry)	12,500 lbs (5670 kg)	12,500 lbs (5670 kg)

# performance

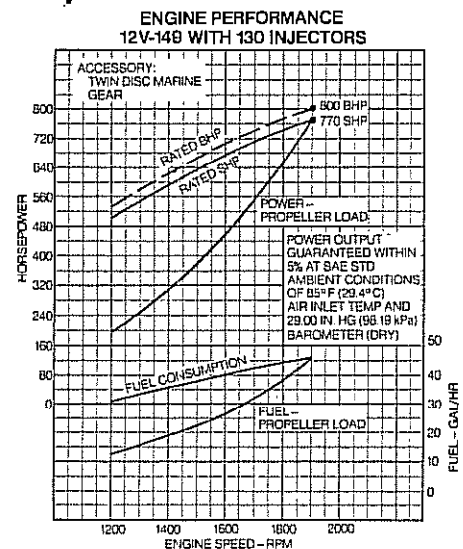
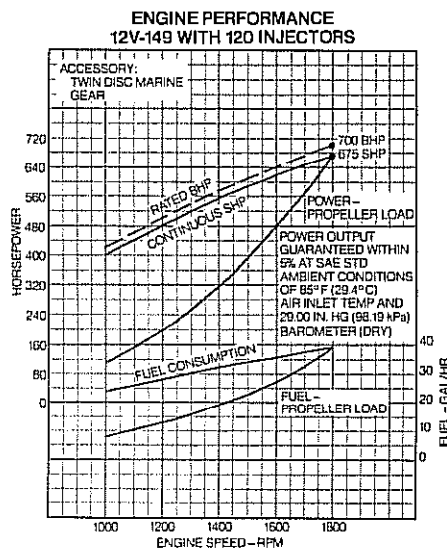
## Rating Explanation

**RATED BHP**—Basic engine gross power.

**RATED SHP**—Net power available at the marine gear output shaft; this rating is recommended for crewboat applications.

**CONTINUOUS SHP**—Net power available at the marine gear output shaft for continuous duty or workboat applications.

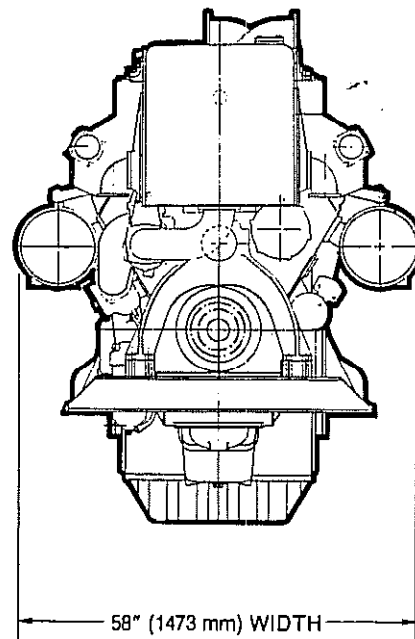
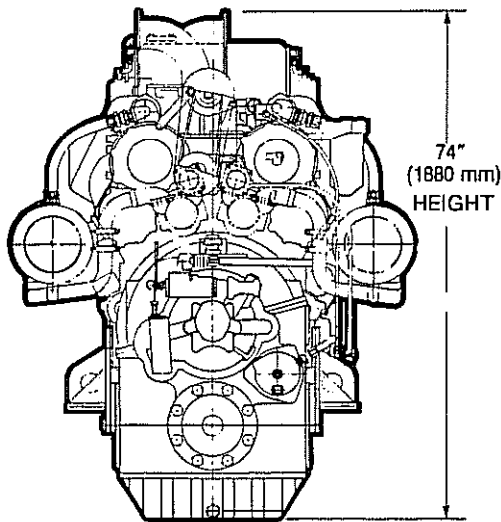
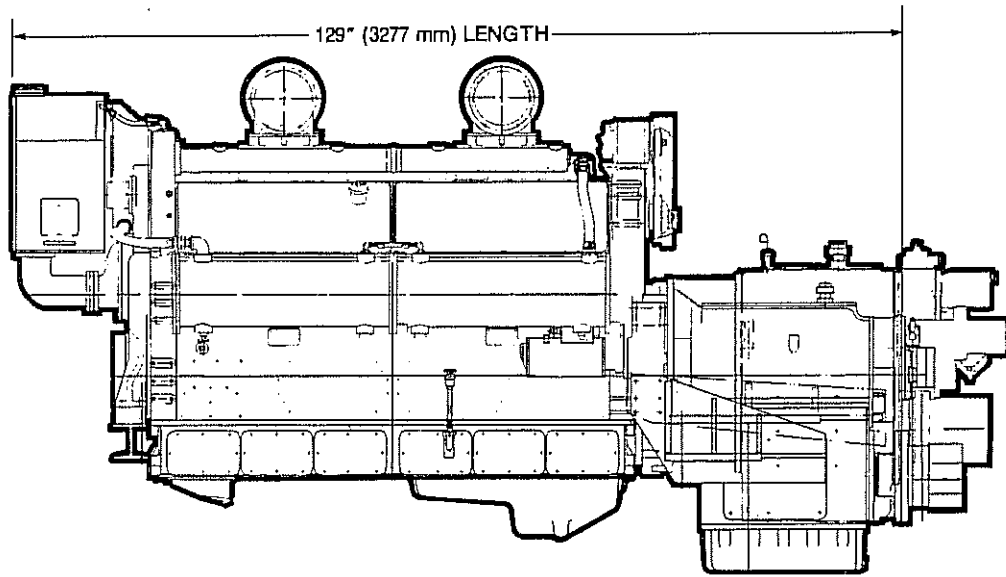
**PROPELLER LOAD**—Indicates horsepower absorbed by a typical propeller and the corresponding fuel consumption throughout the speed range.



12V149 16V149

40 GPH 53 GPH

# principal dimensions



Approximate dimensions shown.  
For complete dimensional information, refer to installation drawing 2SA361.

## standard equipment

---

**Air Cleaner**—Light duty oil bath

**Air Inlet Housing**

**Alternator**—24 volt, 65 amp

**Crankshaft Pulley**

**Engine Mounts**—Front trunnion for engine and marine gear

**Exhaust Manifold**—Water cooled, horizontal end outlet

**Flywheel**—SAE #0

**Flywheel Housing**—SAE #0

**Fuel Filters**

**Governor**—Variable speed

**Injectors**—Cam operated, unit type, clean tip

**Instruments**—Includes tachometer, water temperature gauge, oil pressure gauges for engine and marine gear

**Keel Cooling**

**Lube Oil Cooler**

**Lube Oil Filter**—Full-flow

**Marine Gear**—Twin Disc, reverse and reduction, MG-527, 5.17 to 1 ratio

**Oil Pan**—15° inclination angle, dual sump

**Starting Motor**—Dual, 24 volt

**Vibration Damper**—Double, heavy, viscous

---

For complete specifications and a listing of standard and optional equipment, consult your authorized Detroit Diesel Allison Distributor or Dealer.

---

Specifications subject to change without notice.



**Detroit Diesel Allison**  
Division of General Motors Corporation

13400 West Outer Drive Detroit, Michigan 48228