

Generator Sets

C Power for Prime Power Applications

kWe	Frequency (Hz)	Engine Model	Page
80	50	6B-CP80DM/5	49
99	60	6B-CP99DM/6	49
136	50	6C-CP136DM/5	51
160	60	6C-CP170DM/6	51
170	60	6C-CP170DM/6	51
335	50	K19-CP335DM/5	53
380	50	K19-CP380DM/5	53
390	50	K19-CP380DM/5	53
400	60	K19-CP400DM/6	53
450	60	K19-CP460DM/6	53
460	60	K19-CP460DM/6	53
764	50	K38-CP765DM/5	54
804	50	K38-CP765DM/5	54
832	50	K38-CP765DM/5	54
845	50	K38-CP765DM/5	54
888	60	K38-CP920DM/6	54
920	60	K38-CP920DM/6	54
1050	50	K50-CP1005DM/5	55
1240	60	K50-CP1240DM/6	55

C Safe for Emergency Genset Applications

kWe	Frequency (Hz)	Engine Model	Page
74	50	6B-CS74DM/5	50
92	60	6B-CS92DM/6	50
136	50	6C-CS136DM/5	52
152	60	6C-CS152DM/6	52

CCEC Products

Propulsion Products

kW	BHP	RPM	Engine Model	Rating	Page
179	240	1800	NT855-M CCEC	CON	68
201	270	1800	NT855-M CCEC	CON	68
224	300	1800	NT855-M CCEC	CON	68
261	350	1800	NTA855-M CCEC	CON	69
298	400	1800	NTA855-M CCEC	CON	69
317	425	1800	KT19-M CCEC	CON	70
336	450	1800	NTA855-M CCEC	CON	69
351	470	1800	KTA19-M CCEC	CON	71
373	500	1800	KTA19-M CCEC	CON	71

Auxiliary Products

kWe*	kW	HP	Hz	Engine Model	Page
169	180	241	50	NT855-D(M) CCEC	72
226	240	322	50	NTA855-D(M) CCEC	73
267	284	380	50	NTA855-D(M) CCEC	73
270	287	385	60	NTA855-D(M) CCEC	73
295	313	420	60	NTA855-D(M) CCEC	73
298	317	425	50	NTA855-D(M) CCEC	73
316	336	450	50	KTA19-D(M) CCEC	74
368	392	525	60	KTA19-D(M) CCEC	74

* kWe reflects the approximate amount of power available when used in a keel cooled genset configuration

KTA19-M3

Main Propulsion

General Specifications

Configuration	In-line, 6 cylinder, 4-stroke diesel	
Aspiration	Turbocharged/Aftercooled	
Displacement	19 L	1150 in ³
Bore & Stroke	159 x 159 mm	6.25 x 6.25 in
Fuel System	Pressure Time (PT)	

Commercial Ratings

kW	BHP	RPM	ISO Fuel Cons		Rating	Emissions
			L/hr	Gal/hr		
373	500	1800	67.2	17.8	CON	IMO1
395	530	1800	70.7	18.7	CON	IMO1
447	600	1800	79.8	21.1	CON	IMO1
477	640	1800	84.1	22.2	HD	IMO1

For more information on average fuel consumption, ratings and emissions, see pages 2-7

Product Dimensions

Length	mm (in)	1877	(74)
Width	mm (in)	1003	(40)
Height	mm (in)	1905	(75)
Weight	kg (lb)	2073	(4570)

Dimensions may vary based on selected engine configuration

KTA19-M4

Main Propulsion

General Specifications

Configuration	In-line, 6 cylinder, 4-stroke diesel	
Aspiration	Turbocharged/Aftercooled	
Displacement	19 L	1150 in ³
Bore & Stroke	159 x 159 mm	6.25 x 6.25 in
Fuel System	Pressure Time (PT)	

Commercial Ratings

kW	BHP	RPM	ISO Fuel Cons		Rating	Emissions
			L/hr	Gal/hr		
522	700	2100	94.6	25.0	HD	IMO1

For more information on average fuel consumption, ratings and emissions, see pages 2-7

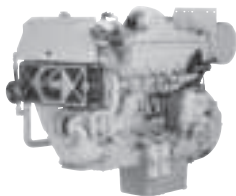
Product Dimensions

Length	mm (in)	1877	(74)
Width	mm (in)	1003	(40)
Height	mm (in)	1905	(75)
Weight	kg (lb)	2073	(4570)

Dimensions may vary based on selected engine configuration

QSK19-M

Main Propulsion



General Specifications

Configuration	In-line, 6 cylinder, 4-stroke diesel	
Aspiration	Turbocharged/Aftercooled	
Displacement	19 L	1150 in ³
Bore & Stroke	159 x 159 mm	6.25 x 6.25 in
Fuel System	Modular Common Rail (MCRS)	

Commercial Ratings

kW	BHP	RPM	ISO Fuel Cons		Rating	Emissions
			L/hr	Gal/hr		
373	500	1800	68.9	18.2	CON	IMO2/EPA2/EC
447	600	1800	77.6	20.5	CON	IMO2/EPA2/EC
492	660	1800	95.0	25.1	CON	IMO2/EPA2/EC
560	750	1800	99.2	26.2	HD	IMO2/EPA2/EC
567	760	2100	102.2	27.0	HD	IMO2/EPA2/EC
597	800	2100	109.8	29.0	MCD	IMO2/EPA2/EC

For more information on average fuel consumption, ratings and emissions, see pages 2-7

Product Dimensions

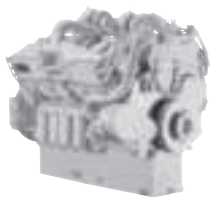
Length	mm (in)	2007	(79)
Width	mm (in)	963	(38)
Height	mm (in)	1880	(74)
Weight	kg (lb)	2189	(4825)

Dimensions may vary based on selected engine configuration

This product is only available in EPA- or EU-regulated areas
Contact your local Cummins professional for more information

KTA38-M0

Main Propulsion



General Specifications

Configuration	V-12 cylinder, 4-stroke diesel	
Aspiration	Turbocharged/Aftercooled	
Displacement	38 L	2300 in ³
Bore & Stroke	159 x 159 mm	6.25 x 6.25 in
Fuel System	Pressure Time (PT)	

Commercial Ratings

kW	BHP	RPM	ISO Fuel Cons		Rating	Emissions
			L/hr	Gal/hr		
559	750	1600	102.6	27.1	CON	IMO1
597	800	1800	106.4	28.1	CON	IMO1
634	850	1800	115.9	30.6	CON	IMO1

For more information on average fuel consumption, ratings and emissions, see pages 2-7

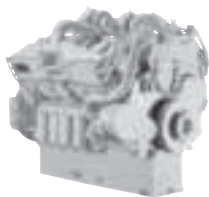
Product Dimensions

Length	mm (in)	2152	(84)
Width	mm (in)	1462	(58)
Height	mm (in)	2083	(82)
Weight	kg (lb)	4218	(9300)

Dimensions may vary based on selected engine configuration

KTA38-M1

Main Propulsion



General Specifications

Configuration	V-12 cylinder, 4-stroke diesel	
Aspiration	Turbocharged/Aftercooled	
Displacement	38 L	2300 in ³
Bore & Stroke	159 x 159 mm	6.25 x 6.25 in
Fuel System	Pressure Time (PT)	

Commercial Ratings

kW	BHP	RPM	ISO Fuel Cons		Rating	Emissions
			L/hr	Gal/hr		
671	900	1600	120.0	31.7	CON	IMO1
746	1000	1800	132.3	34.9	CON	IMO1
821	1100	1800	144.8	38.3	HD	IMO1

For more information on average fuel consumption, ratings and emissions, see pages 2-7

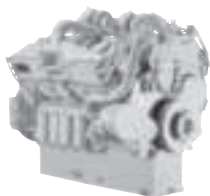
Product Dimensions

Length	mm (in)	2152	(84)
Width	mm (in)	1462	(58)
Height	mm (in)	2083	(82)
Weight	kg (lb)	4218	(9300)

Dimensions may vary based on selected engine configuration

KTA38-M2

Main Propulsion



General Specifications

Configuration	V-12 cylinder, 4-stroke diesel	
Aspiration	Turbocharged/Aftercooled	
Displacement	38 L	2300 in ³
Bore & Stroke	159 x 159 mm	6.25 x 6.25 in
Fuel System	Pressure Time (PT)	

Commercial Ratings

kW	BHP	RPM	ISO Fuel Cons		Rating	Emissions
			L/hr	Gal/hr		
783	1050	1600	138.0	36.5	CON	IMO1
895	1200	1800	155.2	41.0	CON	IMO1
969	1300	1800	158.2	41.8	HD	IMO1
1007	1350	1900	172.6	45.6	HD	IMO1
1007	1350	1950	174.1	46.0	HD	IMO1
1044	1400	1950	179.0	47.3	MCD	IMO1
1119	1500	2050	197.6	52.2	INT	IMO1

For more information on average fuel consumption, ratings and emissions, see pages 2-7

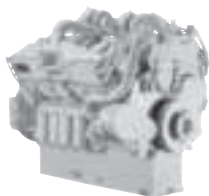
Product Dimensions

Length	mm (in)	2152	(84)
Width	mm (in)	1462	(58)
Height	mm (in)	2083	(82)
Weight	kg (lb)	4218	(9300)

Dimensions may vary based on selected engine configuration

K38-M

Main Propulsion



General Specifications

Configuration	V-12 cylinder, 4-stroke diesel	
Aspiration	Turbocharged/Aftercooled	
Displacement	38 L	2300 in ³
Bore & Stroke	159 x 159 mm	6.25 x 6.25 in
Fuel System	Pressure Time (PT)	

Commercial Ratings

kW	BHP	RPM	ISO Fuel Cons		Rating	Emissions
			L/hr	Gal/hr		
634	850	1800	117.5	31.0	CON	IMO1/EPA2/EC
746	1000	1800	132.9	35.1	CON	IMO1/EPA2/EC

For more information on average fuel consumption, ratings and emissions, see pages 2-7

Product Dimensions

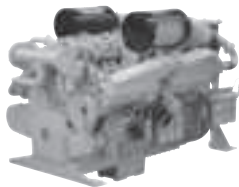
Length	mm (in)	2152	(84)
Width	mm (in)	1462	(58)
Height	mm (in)	2083	(82)
Weight	kg (lb)	4218	(9300)

Dimensions may vary based on selected engine configuration

This product is only available in EPA- or EU-regulated areas
Contact your local Cummins professional for more information

QSK38-M

Main Propulsion



General Specifications

Configuration	V-12 cylinder, 4-stroke diesel	
Aspiration	Turbocharged/Aftercooled	
Displacement	38 L	2300 in ³
Bore & Stroke	159 x 159 mm	6.25 x 6.25 in
Fuel System	Modular Common Rail (MCRS)	

Commercial Ratings

kW	BHP	RPM	ISO Fuel Cons		Rating	Emissions
			L/hr	Gal/hr		
895	1200	1800	164.2	43.4	CON	IMO2/EPA2/EC
970	1300	1800	176.8	46.7	CON	IMO2/EPA2/EC
1007	1350	1900	188.0	49.7	HD	IMO2/EPA2/EC
1044	1400	1800	188.0	49.7	HD	IMO2/EPA2/EC

For more information on average fuel consumption, ratings and emissions, see pages 2-7

Product Dimensions

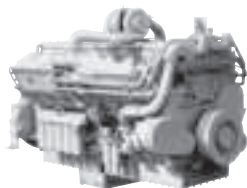
Length	mm (in)	2688	(106)
Width	mm (in)	1642	(65)
Height	mm (in)	2108	(83)
Weight	kg (lb)	4640	(10230)

Dimensions may vary based on selected engine configuration

This product is only available in EPA- or EU-regulated areas
Contact your local Cummins professional for more information

KTA50-M2

Main Propulsion



General Specifications

Configuration	V-16 cylinder, 4-stroke diesel	
Aspiration	Turbocharged/Aftercooled	
Displacement	50 L	3067 in ³
Bore & Stroke	159 x 159 mm	6.25 x 6.25 in
Fuel System	Pressure Time (PT)	

Commercial Ratings

kW	BHP	RPM	ISO Fuel Cons		Rating	Emissions
			L/hr	Gal/hr		
1044	1400	1600	179.0	47.3	CON	IMO1
1193	1600	1800	209.1	55.2	CON	IMO1
1193	1600	1900	208.5	55.1	HD	IMO1
1268	1700	1800	221.2	58.4	HD	IMO1
1342	1800	1900	232.8	61.5	HD	IMO1
1398	1875	1950	248.7	65.7	MCD	IMO1

For more information on average fuel consumption, ratings and emissions, see pages 2-7

Product Dimensions

Length	mm (in)	2694	(106)
Width	mm (in)	1564	(62)
Height	mm (in)	2260	(89)
Weight	kg (lb)	5166	(11389)

Dimensions may vary based on selected engine configuration

QSK50-M

Main Propulsion



General Specifications

Configuration	V-16 cylinder, 4-stroke diesel		
Aspiration	Turbocharged/Aftercooled		
Displacement	50 L	3068 in ³	
Bore & Stroke	159 x 159 mm	6.25 x 6.25 in	
Fuel System	Modular Common Rail (MCRS)		

Commercial Ratings

kW	BHP	RPM	ISO Fuel Cons		Rating	Emissions
			L/hr	Gal/hr		
1193	1600	1800	228.2	60.3	CON	IMO2/EPA2/EC
1268	1700	1800	238.2	62.9	CON	IMO2/EPA2/EC
1342	1800	1800	253.2	66.9	HD	IMO2/EPA2/EC
1342	1800	1900	258.0	68.1	HD	IMO2/EPA2/EC

For more information on average fuel consumption, ratings and emissions, see pages 2-7

Product Dimensions

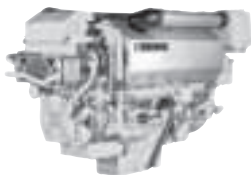
Length	mm (in)	3186	(125)
Width	mm (in)	1642	(65)
Height	mm (in)	2108	(83)
Weight	kg (lb)	6615	(14584)

Dimensions may vary based on selected engine configuration

This product is only available in EPA- or EU-regulated areas
Contact your local Cummins professional for more information

QSK60-M HPI

Main Propulsion



General Specifications

Configuration	V-16 cylinder, 4-stroke diesel	
Aspiration	Turbocharged/Aftercooled	
Displacement	60.2 L	3672 in ³
Bore & Stroke	159 x 190 mm	6.25 x 7.48 in
Fuel System	High Pressure Injection - Pressure Time (HPI-PT)	

Commercial Ratings

kW	BHP	RPM	ISO Fuel Cons		Rating	Emissions
			L/hr	Gal/hr		
1491	2000	1600	252.0	66.6	CON	IMO1
1491	2000	1800	256.4	67.7	CON	IMO1
1641	2200	1800	278.6	73.6	CON	IMO1
1715	2300	1900	294.1	77.7	HD	IMO1
1864	2500	1900	313.9	82.9	MCD	IMO1

For more information on average fuel consumption, ratings and emissions, see pages 2-7

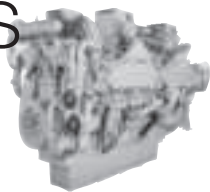
Product Dimensions

Length	mm (in)	3357	(132)
Width	mm (in)	1760	(69)
Height	mm (in)	2409	(95)
Weight	kg (lb)	8754	(19300)

Dimensions may vary based on selected engine configuration

QSK60-M MCRS

Main Propulsion



General Specifications

Configuration	V-16 cylinder, 4-stroke diesel	
Aspiration	Turbocharged/Aftercooled	
Displacement	60.2 L	3672 in ³
Bore & Stroke	159 x 190 mm	6.25 x 7.48 in
Fuel System	Modular Common Rail (MCRS)	

Commercial Ratings

kW	BHP	RPM	ISO Fuel Cons		Rating	Emissions
			L/hr	Gal/hr		
1491	2000	1600	255.6	67.5	CON	IMO2/EPA2/EC
1491	2000	1800	257.5	68.1	CON	IMO2/EPA2/EC
1641	2200	1800	281.1	74.3	CON	IMO2/EPA2/EC
1715	2300	1900	296.3	78.3	HD	IMO2/EPA2/EC
1864	2500	1900	322.6	85.2	MCD	IMO2/EPA2/EC
2013	2700	1900	348.4	92	INT	IMO2/EPA2/EC

For more information on average fuel consumption, ratings and emissions, see pages 2-7

Product Dimensions

Length	mm (in)	3290	(130)
Width	mm (in)	1757	(69)
Height	mm (in)	2415	(95)
Weight	kg (lb)	8754	(19300)

Dimensions may vary based on selected engine configuration

This product is only available in EPA- or EU-regulated areas
Contact your local Cummins professional for more information

6BT5.9-D(M)

Marine Auxiliary

General Specifications

Configuration	In-line, 6 cylinder, 4-stroke diesel		
Aspiration	Turbocharged		
Displacement	5.9 L	359 in ³	
Bore & Stroke	102 x 120 mm	4.02 x 4.75 in	
Fuel System	Inline Injection Pump		

Prime Power Ratings

Output Power			Hz	ISO Fuel Cons		Emissions
kW	BHP	kWe*		L/hr	Gal/hr	
78	104	71	50	10.7	2.8	N/A
91	122	80	50	11.3	3.0	N/A
91	122	83	60	12.7	3.3	N/A
112	150	99	60	14.0	3.7	N/A

* kWe reflects the approximate amount of power available when used in a keel cooled genset configuration

For more information on average fuel consumption, ratings and emissions, see pages 2-7

Product Dimensions

Length	mm (in)	1020	(40)
Width	mm (in)	601	(24)
Height	mm (in)	1201	(47)
Weight	kg (lb)	426	(940)

Dimensions may vary based on selected engine configuration

6BTA5.9-D(M)

Marine Auxiliary

General Specifications

Configuration	In-line, 6 cylinder, 4-stroke diesel	
Aspiration	Turbocharged/Aftercooled	
Displacement	5.9 L	359 in ³
Bore & Stroke	102 x 120 mm	4.02 x 4.75 in
Fuel System	Inline Injection Pump	

Prime Power Ratings

Output Power			Hz	ISO Fuel Cons		Emissions**
kW	BHP	kWe*		L/hr	Gal/hr	
75	100	72	60	12.1	3.2	EPA2
93	125	90	60	14.1	3.7	EPA2

* kWe reflects the approximate amount of power available when used in a keel cooled genset configuration

** Products below 130 kW do not require IMO compliance

For more information on average fuel consumption, ratings and emissions, see pages 2-7

Product Dimensions

Length	mm (in)	1051	(41)
Width	mm (in)	681	(27)
Height	mm (in)	1201	(47)
Weight	kg (lb)	426	(940)

Dimensions may vary based on selected engine configuration

6CT8.3-D(M)

Marine Auxiliary

General Specifications

Configuration	In-line, 6 cylinder, 4-stroke diesel		
Aspiration	Turbocharged		
Displacement	8.3 L	504.5 in ³	
Bore & Stroke	114 x 135 mm	4.49 x 5.32 in	
Fuel System	Inline Injection Pump		

Prime Power Ratings

Output Power			Hz	ISO Fuel Cons		Emissions
kW	BHP	kWe*		L/hr	Gal/hr	
122	164	113	50	14.9	3.9	IMO1
140	188	129	60	18.7	4.9	IMO1

* kWe reflects the approximate amount of power available when used in a keel cooled genset configuration

For more information on average fuel consumption, ratings and emissions, see pages 2-7

Product Dimensions

Length	mm (in)	1182	(47)
Width	mm (in)	710	(28)
Height	mm (in)	1137	(45)
Weight	kg (lb)	684	(1505)

Dimensions may vary based on selected engine configuration

6CTA8.3-D(M)

Marine Auxiliary

General Specifications

Configuration	In-line, 6 cylinder, 4-stroke diesel		
Aspiration	Turbocharged/Aftercooled		
Displacement	8.3 L	504.5 in ³	
Bore & Stroke	114 x 135 mm	4.49 x 5.32 in	
Fuel System	Inline Injection Pump		

Prime Power Ratings

Output Power			Hz	ISO Fuel Cons		Emissions
kW	BHP	kWe*		L/hr	Gal/hr	
163	219	152	50	19.3	5.1	IMO1
164	220	153	50	20.5	5.4	IMO1
181	242	170	60	23.4	6.2	IMO1
188	252	173	60	23.0	6.1	IMO1

* kWe reflects the approximate amount of power available when used in a keel cooled genset configuration

For more information on average fuel consumption, ratings and emissions, see pages 2-7

Product Dimensions

Length	mm (in)	1182	(47)
Width	mm (in)	710	(28)
Height	mm (in)	1137	(45)
Weight	kg (lb)	702	(1545)

Dimensions may vary based on selected engine configuration

6CTA8.3-DM

Marine Auxiliary

General Specifications

Configuration	In-line, 6 cylinder, 4-stroke diesel		
Aspiration	Turbocharged/Aftercooled		
Displacement	8.3 L	504.5 in ³	
Bore & Stroke	114 x 135 mm	4.49 x 5.32 in	
Fuel System	Inline Injection Pump		

Prime Power Ratings

Output Power			Hz	ISO Fuel Cons		Emissions
kW	BHP	kWe*		L/hr	Gal/hr	
201	270	185	60	27.1	7.2	IMO1/EPA2

* kWe reflects the approximate amount of power available when used in a keel cooled genset configuration

For more information on average fuel consumption, ratings and emissions, see pages 2-7

Product Dimensions

Length	mm (in)	1182	(47)
Width	mm (in)	710	(28)
Height	mm (in)	1137	(45)
Weight	kg (lb)	702	(1545)

Dimensions may vary based on selected engine configuration

QSM11-DM

Marine Auxiliary

General Specifications

Configuration	In-line, 6 cylinder, 4-stroke diesel		
Aspiration	Turbocharged/Aftercooled		
Displacement	10.8 L	661 in ³	
Bore & Stroke	125 x 147 mm	4.92 x 5.79 in	
Fuel System	CELECT		

Prime Power Ratings

Output Power			Hz	ISO Fuel Cons		Emissions
kW	BHP	kWe*		L/hr	Gal/hr	
265	355	250	50	32.1	8.5	IMO2/EPA2
265	355	250	60	33.7	8.9	IMO2/EPA2
317	425	300	60	39.2	10.4	IMO2/EPA2

* kWe reflects the approximate amount of power available when used in a keel cooled genset configuration

For more information on average fuel consumption, ratings and emissions, see pages 2-7

Product Dimensions

Length	mm (in)	1475	(58)
Width	mm (in)	1081	(43)
Height	mm (in)	1039	(41)
Weight	kg (lb)	1118	(2464)

Dimensions may vary based on selected engine configuration

NT855-D(M)

Marine Auxiliary

General Specifications

Configuration	In-line, 6 cylinder, 4-stroke diesel	
Aspiration	Turbocharged	
Displacement	14 L	855 in ³
Bore & Stroke	140 x 152 mm	5.50 x 6.00 in
Fuel System	Pressure Time (PT)	

Prime Power Ratings

Output Power			Hz	ISO Fuel Cons		Emissions
kW	BHP	kWe*		L/hr	Gal/hr	
209	280	194	50	N/A	N/A	N/A
231	310	215	50	N/A	N/A	N/A
242	325	225	50	N/A	N/A	N/A
254	340	236	60	N/A	N/A	N/A
265	355	246	60	N/A	N/A	N/A
295	395	274	60	N/A	N/A	N/A

* kWe reflects the approximate amount of power available when used in a keel cooled genset configuration

For more information on average fuel consumption, ratings and emissions, see pages 2-7

Product Dimensions

Length	mm (in)	1298	(61)
Width	mm (in)	817	(32)
Height	mm (in)	1367	(53)
Weight	kg (lb)	1388	(3060)

Dimensions may vary based on selected engine configuration

NTA855-D(M)

Marine Auxiliary

General Specifications

Configuration	In-line, 6 cylinder, 4-stroke diesel		
Aspiration	Turbocharged/Aftercooled		
Displacement	14 L	855 in ³	
Bore & Stroke	140 x 152 mm	5.50 x 6.00 in	
Fuel System	Pressure Time (PT)		

Prime Power Ratings

Output Power			Hz	ISO Fuel Cons		Emissions
kW	BHP	kWe*		L/hr	Gal/hr	
280	375	260	50	N/A	N/A	N/A
306	410	284	50	N/A	N/A	N/A
313	420	295	60	N/A	N/A	N/A
358	480	337	60	N/A	N/A	N/A

* kWe reflects the approximate amount of power available when used in a keel cooled genset configuration

For more information on average fuel consumption, ratings and emissions, see pages 2-7

Product Dimensions

Length	mm (in)	1298	(61)
Width	mm (in)	817	(32)
Height	mm (in)	1367	(53)
Weight	kg (lb)	1433	(3160)

Dimensions may vary based on selected engine configuration

KTA19-D(M)

Marine Auxiliary

General Specifications

Configuration	In-line, 6 cylinder, 4-stroke diesel	
Aspiration	Turbocharged/Aftercooled	
Displacement	19 L	1150 in ³
Bore & Stroke	159 x 159 mm	6.25 x 6.25 in
Fuel System	Pressure Time (PT)	

Prime Power Ratings

Output Power			Hz	ISO Fuel Cons		Emissions
kW	BHP	kWe*		L/hr	Gal/hr	
336	450	316	50	44.8	11.8	N/A
392	525	368	60	53.6	14.2	N/A
403	540	379	50	49.5	13.1	IMO1
448	600	421	50	54.2	14.3	N/A
463	620	435	60	59.3	15.7	IMO1
507	680	477	60	62.5	16.5	N/A

* kWe reflects the approximate amount of power available when used in a keel cooled genset configuration

For more information on average fuel consumption, ratings and emissions, see pages 2-7

Product Dimensions

Length	mm (in)	1877	(74)
Width	mm (in)	1003	(40)
Height	mm (in)	1905	(75)
Weight	kg (lb)	2073	(4570)

Dimensions may vary based on selected engine configuration

KTA19-D(M1)

Marine Auxiliary

General Specifications

Configuration	In-line, 6 cylinder, 4-stroke diesel		
Aspiration	Turbocharged/Aftercooled		
Displacement	19 L	1150 in ³	
Bore & Stroke	159 x 159 mm	6.25 x 6.25 in	
Fuel System	Pressure Time (PT)		

Prime Power Ratings

Output Power			Hz	ISO Fuel Cons		Emissions
kW	BHP	kWe*		L/hr	Gal/hr	
358	480	335	50	47.1	12.5	IMO1
410	550	390	50	52.5	13.9	IMO1
425	570	400	60	58.8	15.5	IMO1
485	650	450	60	64.7	17.1	IMO1

* kWe reflects the approximate amount of power available when used in a keel cooled genset configuration

For more information on average fuel consumption, ratings and emissions, see pages 2-7

Product Dimensions

Length	mm (in)	1877	(74)
Width	mm (in)	1003	(40)
Height	mm (in)	1905	(75)
Weight	kg (lb)	2073	(4570)

Dimensions may vary based on selected engine configuration

K19-DM

Marine Auxiliary

General Specifications

Configuration	In-line, 6 cylinder, 4-stroke diesel	
Aspiration	Turbocharged/Aftercooled	
Displacement	19 L	1150 in ³
Bore & Stroke	159 x 159 mm	6.25 x 6.25 in
Fuel System	Pressure Time (PT)	

Prime Power Ratings

Output Power			Hz	ISO Fuel Cons		Emissions
kW	BHP	kWe*		L/hr	Gal/hr	
425	570	400	60	58.8	15.5	IMO2
485	650	450	60	64.7	17.1	IMO2

* kWe reflects the approximate amount of power available when used in a keel cooled genset configuration

For more information on average fuel consumption, ratings and emissions, see pages 2-7

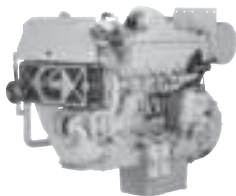
Product Dimensions

Length	mm (in)	1877	(74)
Width	mm (in)	1003	(40)
Height	mm (in)	1905	(75)
Weight	kg (lb)	2073	(4570)

Dimensions may vary based on selected engine configuration

QSK19-DM

Marine Auxiliary



General Specifications

Configuration	In-line, 6 cylinder, 4-stroke diesel	
Aspiration	Turbocharged/Aftercooled	
Displacement	19 L	1150 in ³
Bore & Stroke	159 x 159 mm	6.25 x 6.25 in
Fuel System	Modular Common Rail (MCRS)	

Prime Power Ratings

Output Power			Hz	ISO Fuel Cons		Emissions
kW	BHP	kWe*		L/hr	Gal/hr	
433	580	400	50	111.1	29.3	IMO2/EPA2/EC
563	755	541	60	73.4	19.1	IMO2/EPA2/EC

* kWe reflects the approximate amount of power available when used in a keel cooled genset configuration

For more information on average fuel consumption, ratings and emissions, see pages 2-7

Product Dimensions

Length	mm (in)	2007	(79)
Width	mm (in)	963	(38)
Height	mm (in)	1880	(74)
Weight	kg (lb)	2189	(4825)

Dimensions may vary based on selected engine configuration

This product is only available in EPA- or EU-regulated areas
Contact your local Cummins professional for more information

VTA28-D(M)

Marine Auxiliary

General Specifications

Configuration	V-12 cylinder, 4-stroke diesel		
Aspiration	Turbocharged/Aftercooled		
Displacement	28 L	1710 in ³	
Bore & Stroke	140 x 152 mm	5.50 x 6.00 in	
Fuel System	Pressure Time (PT)		

Prime Power Ratings

Output Power			Hz	ISO Fuel Cons		Emissions
kW	BHP	kWe*		L/hr	Gal/hr	
515	690	484	60	N/A	N/A	N/A
560	750	526	50	N/A	N/A	IMO1
560	750	526	60	N/A	N/A	N/A
608	815	572	60	N/A	N/A	IMO1

* kWe reflects the approximate amount of power available when used in a keel cooled genset configuration

For more information on average fuel consumption, ratings and emissions, see pages 2-7

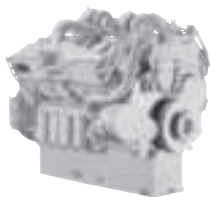
Product Dimensions

Length	mm (in)	1900	(75)
Width	mm (in)	995	(39)
Height	mm (in)	1641	(65)
Weight	kg (lb)	2901	(6395)

Dimensions may vary based on selected engine configuration

KTA38-D(M)

Marine Auxiliary



General Specifications

Configuration	V-12 cylinder, 4-stroke diesel	
Aspiration	Turbocharged/Aftercooled	
Displacement	38 L	2300 in ³
Bore & Stroke	159 x 159 mm	6.25 x 6.25 in
Fuel System	Pressure Time (PT)	

Prime Power Ratings

Output Power			Hz	ISO Fuel Cons		Emissions
kW	BHP	kWe*		L/hr	Gal/hr	
634	850	609	50	84.3	22.3	N/A
664	890	637	50	87.5	23.1	N/A
768	1030	738	60	104.4	27.6	N/A
806	1080	782	50	103.7	27.4	N/A
809	1085	777	60	108.6	28.7	N/A
880	1180	845	50	109.4	28.9	N/A
910	1220	874	60	116.8	30.9	N/A
1007	1350	967	60	131.6	34.8	N/A

* kWe reflects the approximate amount of power available when used in a keel cooled genset configuration

For more information on average fuel consumption, ratings and emissions, see pages 2-7

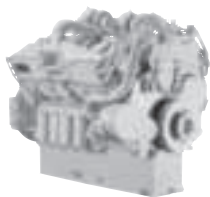
Product Dimensions

Length	mm (in)	2152	(84)
Width	mm (in)	1462	(58)
Height	mm (in)	2083	(82)
Weight	kg (lb)	4218	(9300)

Dimensions may vary based on selected engine configuration

KTA38-D(M1)

Marine Auxiliary



General Specifications

Configuration	V-12 cylinder, 4-stroke diesel	
Aspiration	Turbocharged/Aftercooled	
Displacement	38 L	2300 in ³
Bore & Stroke	159 x 159 mm	6.25 x 6.25 in
Fuel System	Pressure Time (PT)	

Prime Power Ratings

Output Power			Hz	ISO Fuel Cons		Emissions
kW	BHP	kWe*		L/hr	Gal/hr	
746	1000	716	50	91.7	24.2	IMO1
821	1100	788	60	104.0	27.5	IMO1
880	1180	845	50	104.1	27.5	IMO1
970	1300	920	60	122.2	32.3	IMO1

* kWe reflects the approximate amount of power available when used in a keel cooled genset configuration

For more information on average fuel consumption, ratings and emissions, see pages 2-7

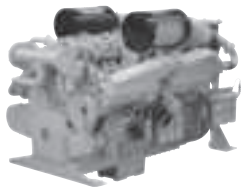
Product Dimensions

Length	mm (in)	2152	(84)
Width	mm (in)	1462	(58)
Height	mm (in)	2083	(82)
Weight	kg (lb)	4218	(9300)

Dimensions may vary based on selected engine configuration

QSK38-DM

Marine Auxiliary



General Specifications

Configuration	V-12 cylinder, 4-stroke diesel	
Aspiration	Turbocharged/Aftercooled	
Displacement	38 L	2300 in ³
Bore & Stroke	159 x 159 mm	6.25 x 6.25 in
Fuel System	Modular Common Rail (MCRS)	

Prime Power Ratings

Output Power			Hz	ISO Fuel Cons		Emissions
kW	BHP	kWe*		L/hr	Gal/hr	
984	1320	950	50	128.9	34.0	IMO2/EPA2/EC
1044	1400	1010	60	141.7	37.4	IMO2/EPA2/EC

* kWe reflects the approximate amount of power available when used in a keel cooled genset configuration

For more information on average fuel consumption, ratings and emissions, see pages 2-7

Product Dimensions

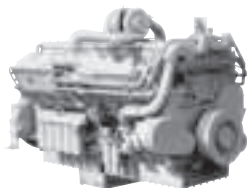
Length	mm (in)	2688	(106)
Width	mm (in)	1642	(65)
Height	mm (in)	2108	(79)
Weight	kg (lb)	4640	(10230)

Dimensions may vary based on selected engine configuration

This product is only available in EPA- or EU-regulated areas
Contact your local Cummins professional for more information

KTA50-D(M)

Marine Auxiliary



General Specifications

Configuration	V-16 cylinder, 4-stroke diesel	
Aspiration	Turbocharged/Aftercooled	
Displacement	50 L	3067 in ³
Bore & Stroke	159 x 159 mm	6.25 x 6.25 in
Fuel System	Pressure Time (PT)	

Prime Power Ratings

Output Power			Hz	ISO Fuel Cons		Emissions
kW	BHP	kWe*		L/hr	Gal/hr	
880	1180	845	50	116.8	30.9	N/A
900	1206	864	50	N/A	N/A	N/A
1000	1340	960	60	N/A	N/A	N/A
1007	1350	967	60	138.1	36.5	N/A
1097	1470	1053	50	134.1	35.4	N/A
1220	1635	1171	60	153.7	40.1	N/A

* kWe reflects the approximate amount of power available when used in a keel cooled genset configuration

For more information on average fuel consumption, ratings and emissions, see pages 2-7

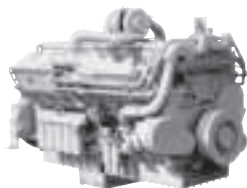
Product Dimensions

Length	mm (in)	2694	(106)
Width	mm (in)	1564	(62)
Height	mm (in)	2260	(89)
Weight	kg (lb)	5431	(11973)

Dimensions may vary based on selected engine configuration

KTA50-D(M1)

Marine Auxiliary



General Specifications

Configuration	V-16 cylinder, 4-stroke diesel	
Aspiration	Turbocharged/Aftercooled	
Displacement	50 L	3067 in ³
Bore & Stroke	159 x 159 mm	6.25 x 6.25 in
Fuel System	Pressure Time (PT)	

Prime Power Ratings

Output Power			Hz	ISO Fuel Cons		Emissions
kW	BHP	kWe*		L/hr	Gal/hr	
1007	1350	967	50	118.9	31.4	IMO1
1097	1470	1050	50	129.5	34.2	IMO1
1141	1530	1096	60	138.6	36.6	IMO1
1291	1730	1240	60	152.8	40.4	IMO1

* kWe reflects the approximate amount of power available when used in a keel cooled genset configuration

For more information on average fuel consumption, ratings and emissions, see pages 2-7

Product Dimensions

Length	mm (in)	2694	(106)
Width	mm (in)	1564	(62)
Height	mm (in)	2260	(89)
Weight	kg (lb)	5431	(11973)

Dimensions may vary based on selected engine configuration

QSK50-DM

Marine Auxiliary



General Specifications

Configuration	V-16 cylinder, 4-stroke diesel		
Aspiration	Turbocharged/Aftercooled		
Displacement	50 L	3068 in ³	
Bore & Stroke	159 x 159 mm	6.25 x 6.25 in	
Fuel System	Modular Common Rail (MCRS)		

Prime Power Ratings

Output Power			Hz	ISO Fuel Cons		Emissions
kW	BHP	kWe*		L/hr	Gal/hr	
1216	1630	1180	50	166.4	44.0	IMO2/EPA2/EC
1343	1800	1300	60	184.3	48.7	IMO2/EPA2/EC

* kWe reflects the approximate amount of power available when used in a keel cooled genset configuration

For more information on average fuel consumption, ratings and emissions, see pages 2-7

Product Dimensions

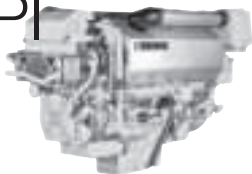
Length	mm (in)	3186	(125)
Width	mm (in)	1642	(65)
Height	mm (in)	2108	(83)
Weight	kg (lb)	6615	(14584)

Dimensions may vary based on selected engine configuration

This product is only available in EPA- or EU-regulated areas
Contact your local Cummins professional for more information

QSK60-D(M) HPI

Marine Auxiliary



General Specifications

Configuration	V-16 cylinder, 4-stroke diesel		
Aspiration	Turbocharged/Aftercooled		
Displacement	60.2 L	3672 in ³	
Bore & Stroke	159 x 190 mm	6.25 x 7.48 in	
Fuel System	High Pressure Injection - Pressure Time (HPI-PT)		

Prime Power Ratings

Output Power			Hz	ISO Fuel Cons		Emissions
kW	BHP	kWe*		L/hr	Gal/hr	
1563	2095	1500	50	185.8	49.1	IMO1
1900	2547	1825	60	237.7	62.8	IMO1

* kWe reflects the approximate amount of power available when used in a keel cooled genset configuration

For more information on average fuel consumption, ratings and emissions, see pages 2-7

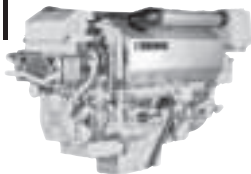
Product Dimensions

Length	mm (in)	3357	(132)
Width	mm (in)	1760	(69)
Height	mm (in)	2409	(95)
Weight	kg (lb)	8754	(19300)

Dimensions may vary based on selected engine configuration

QSK60-DM HPI

Marine Auxiliary



General Specifications

Configuration	V-16 cylinder, 4-stroke diesel		
Aspiration	Turbocharged/Aftercooled		
Displacement	60.2 L	3672 in ³	
Bore & Stroke	159 x 190 mm	6.25 x 7.48 in	
Fuel System	High Pressure Injection - Pressure Time (HPI-PT)		

Prime Power Ratings

Output Power			Hz	ISO Fuel Cons		Emissions
kW	BHP	kWe*		L/hr	Gal/hr	
1563	2095	1500	50	193.6	51.2	IMO2
1900	2547	1825	60	245.3	64.8	IMO2

* kWe reflects the approximate amount of power available when used in a keel cooled genset configuration

For more information on average fuel consumption, ratings and emissions, see pages 2-7

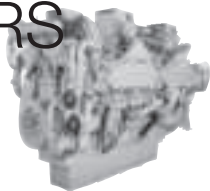
Product Dimensions

Length	mm (in)	3357	(132)
Width	mm (in)	1760	(69)
Height	mm (in)	2409	(95)
Weight	kg (lb)	8754	(19300)

Dimensions may vary based on selected engine configuration

QSK60-DM MCRS

Marine Auxiliary



General Specifications

Configuration	V-16 cylinder, 4-stroke diesel		
Aspiration	Turbocharged/Aftercooled		
Displacement	60.2 L	3672 in ³	
Bore & Stroke	159 x 190 mm	6.25 x 7.48 in	
Fuel System	Modular Common Rail (MCRS)		

Prime Power Ratings

Output Power			Hz	ISO Fuel Cons		Emissions
kW	BHP	kWe*		L/hr	Gal/hr	
1563	2095	1500	50	192.1	50.7	IMO2/EPA2/EC
1900	2547	1825	60	239.8	63.4	IMO2/EPA2/EC

* kWe reflects the approximate amount of power available when used in a keel cooled genset configuration

For more information on average fuel consumption, ratings and emissions, see pages 2-7

Product Dimensions

Length	mm (in)	3290	(130)
Width	mm (in)	1757	(69)
Height	mm (in)	2415	(95)
Weight	kg (lb)	8754	(19300)

Dimensions may vary based on selected engine configuration

This product is only available in EPA- or EU-regulated areas
Contact your local Cummins professional for more information

6B-CP

C Power Marine Genset



General Specifications

Engine Model	6BT5.9-D(M)
Alternator	Newage UCM274E

Prime Power Ratings

kWe	Hz	ISO Fuel Cons		Voltage	Emissions
		L/hr	Gal/hr		
80	50	11.3	3.0	380	N/A
				400	
				415	
99	60	14.0	3.7	416	N/A
				440	
				460	
				480	

For more information on average fuel consumption, ratings and emissions, see pages 2-7

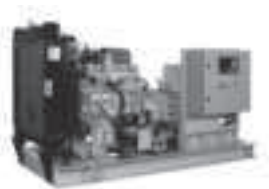
Product Dimensions

Length	mm (in)	2240	(88)
Width	mm (in)	1250	(49)
Height	mm (in)	1270	(50)
Weight	kg (lb)	1270	(2800)

Dimensions may vary based on selected engine configuration

6B-CS

C Safe Marine Genset



General Specifications

Engine Model	6BT5.9-D(M)
Alternator	Newage UCM274E

Prime Power Ratings

kWe	Hz	ISO Fuel Cons		Voltage	Emissions
		L/hr	Gal/hr		
74	50	11.3	3.0	380	N/A
				400	
				415	
92	60	14.0	3.7	416	N/A
				440	
				460	
				480	

For more information on average fuel consumption, ratings and emissions, see pages 2-7

Product Dimensions

Length	mm (in)	2320	(91)
Width	mm (in)	1250	(49)
Height	mm (in)	1280	(50)
Weight	kg (lb)	1370	(3020)

Dimensions may vary based on selected engine configuration

6C-CP

C Power Marine Genset



General Specifications

Engine Model	6CTA8.3-D(M)
Alternator	Newage UCM274H

Prime Power Ratings

kWe	Hz	ISO Fuel Cons		Voltage	Emissions
		L/hr	Gal/hr		
136	50	20.5	5.4	380	IMO1
				400	
				415	
160	60	23.4	6.2	416	IMO1
170	60	23.4	6.2	440	IMO1
				460	
				480	

For more information on average fuel consumption, ratings and emissions, see pages 2-7

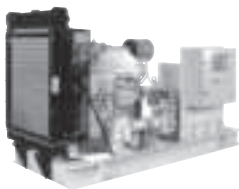
Product Dimensions

Length	mm (in)	2400	(94)
Width	mm (in)	1250	(49)
Height	mm (in)	1270	(50)
Weight	kg (lb)	1720	(3792)

Dimensions may vary based on selected engine configuration

6C-CS

C Safe Marine Genset



General Specifications

Engine Model	6CTA8.3-D(M)
Alternator	Newage UCM274H

Prime Power Ratings

kWe	Hz	ISO Fuel Cons		Voltage	Emissions
		L/hr	Gal/hr		
136	50	20.5	5.4	380	IMO1
				400	
				415	
152	60	23.4	6.2	416	IMO1
				440	
				460	
				480	

For more information on average fuel consumption, ratings and emissions, see pages 2-7

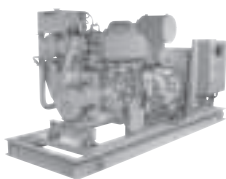
Product Dimensions

Length	mm (in)	2550	(100)
Width	mm (in)	1250	(49)
Height	mm (in)	1480	(58)
Weight	kg (lb)	1850	(4079)

Dimensions may vary based on selected engine configuration

K19-CP

C Power Marine Genset



General Specifications

Engine Model	KTA19-D(M1)
Alternator	Newage HCM534E

Prime Power Ratings

kWe	Hz	ISO Fuel Cons		Voltage	Emissions
		L/hr	Gal/hr		
335	50	47.1	12.4	380	IMO1
				400	
				415	
				440	
380	50	52.5	13.9	380	IMO1
390	50	52.5	13.9	400	IMO1
				415	
				440	
400	60	58.8	15.5	416	IMO1/IMO2
				440	
				460	
				480	
450	60	64.7	17.1	416	IMO1/IMO2
460	60	64.7	17.1	440	IMO1/IMO2
				460	
				480	

For more information on average fuel consumption, ratings and emissions, see pages 2-7

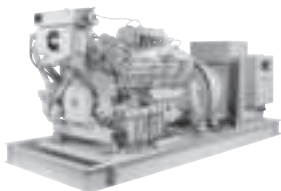
Product Dimensions

Length	mm (in)	3500	(137)
Width	mm (in)	1540	(60)
Height	mm (in)	2100	(82)
Weight	kg (lb)	4100	(9039)

Dimensions may vary based on selected engine configuration

K38-CP

C Power Marine Genset



General Specifications

Engine Model	KTA38-D(M1)
Alternator	Newage PM734B

Prime Power Ratings

kWe	Hz	ISO Fuel Cons		Voltage	Emissions
		L/hr	Gal/hr		
764	50	104.1	27.5	380	IMO1
804	50	104.1	27.5	400	IMO1
832	50	104.1	27.5	415	IMO1
845	50	104.1	27.5	440	IMO1
888	60	122.2	32.3	416	IMO1
920	60	122.2	32.3	440 460 480	IMO1

For more information on average fuel consumption, ratings and emissions, see pages 2-7

Product Dimensions

Length	mm (in)	4500	(177)
Width	mm (in)	1900	(74)
Height	mm (in)	2100	(82)
Weight	kg (lb)	8200	(18078)

Dimensions may vary based on selected engine configuration

K50-CP

C Power Marine Genset



General Specifications

Engine Model	KTA50-D(M1)
Alternator	Newage PM734E

Prime Power Ratings

kWe	Hz	ISO Fuel Cons		Voltage	Emissions
		L/hr	Gal/hr		
1050	50	129.5	34.2	380	IMO1
				400	
				415	
				440	
1240	60	152.8	40.4	416	IMO1
				440	
				460	
				480	

For more information on average fuel consumption, ratings and emissions, see pages 2-7

Product Dimensions

Length	mm (in)	5150	(203)
Width	mm (in)	1900	(75)
Height	mm (in)	2100	(83)
Weight	kg (lb)	9700	(21384)

Dimensions may vary based on selected engine configuration

Centinel

Features and Benefits

- Aftermarket kit available for the K-Series engines; installed as a factory option on the QSK MCRS engines
- Eliminates or extends oil change intervals by automatically draining used oil to the fuel tank and replacing it with clean oil
- Reduces downtime and the cost of oil change service
- Reduces the risk of engine damage due to poor oil change maintenance practice



Eliminator



Features and Benefits

- Available on the KTA38, KTA50 and all QSK MCRS engine models
- The Eliminator is a combination self-cleaning stacked disk filter and centrifuge housed in a single engine mounted assembly
- Lowers the cost of operation by:
 - Eliminating the recurring cost and maintenance of spin-on filters
 - Reducing downtime for filter changes
 - Eliminating disposal cost of used filter elements
 - Improving filtration and reducing component wear which can extend overhaul periods
 - Extending oil change intervals when used concurrently with oil sampling and Centinel
- Satisfies Marine Classification Society requirements for duplex filters (except Lloyd's Register, which only approves for multi-engine vessels)

Pre-Lube with Quik Evac

Features and Benefits

- Available on the QSK38 and QSK50 engines
- Engine-mounted pump with off-engine mounted controls
- Controlled by the Customer Interface Box (CIB)
- Pre-lube reduces engine wear by providing lubrication prior to engine start
- Quik Evac reduces oil change time by quickly removing oil from the engine oil pan
- Available in 24 volt DC only

ED-3

Electronic Digital Display



System Features

- Remote engine information display
- Displays engine parameter information
- Engine alarm indication (full text)
- Data trending
- Internal buzzer
- Graphical high resolution FSTN displays
- ABS / polycarbonate case ensures display will work properly in marine environment
- IP67 marine rating
- -40 to +75°C operating temperature range
- J1708 & J1939 databus communication capable
- 500 mA external output driver
- NMEA 0183 interface capable
- CE approved design
- Low power consumption (< 200 mA @ 12 V DC)
- Superior visibility even in direct sunlight

Compatibility

- QSM11-DM
- QSK19-M/DM
- QSK38-M/DM
- QSK50-M/DM
- QSK60
- KTA19, KTA38 and KTA50 with CENTRY

C Command

Electronic Information System

System Features

- Modular design
- Simplified installation
- Durable/proven hardware
- Cost-effective for basic monitoring

Component Features

Customer Interface Box (CIB) - Required



- Central engine-to-vessel interface point
- Eliminates randomly located wiring harness connections
- Standard with all QSK MCRS engine systems
- NEMA rated enclosure
- Contains:
 - All necessary ECM connections
 - All communication connections
 - Ignition, start and stop connections
 - Two fault monitored power inputs available
 - Engine stop button mounted on face of CIB
 - All connections for OEM buttons and lights

Engine Room Panel (ERP) - Optional



- Local interface for engine controls
- NEMA rated enclosure with sealed connections
- Contains:
 - Button panel
 - Rotary keyswitch
 - Start/stop buttons
 - Alarm acknowledge button
 - Red alarm indication (with buzzer)
 - Local/remote control button
 - Digital display
 - Service tool connection

C Command

Electronic Information System

Control Panel (CP)* - Optional



- Remote interface for engine controls
- Contains:
 - Start/stop buttons
 - Alarm acknowledge button
 - Red alarm indication (with buzzer)
 - Local/remote control indication

Electronic Digital Display (ED-3)* - Optional



- Remote engine information display
- Displays:
 - Engine parameter information (text and graphics)
 - Engine alarm indication (full text)
 - Data trending
 - Internal buzzer
 - External alarm contact
- Service tool connection port included

Gauge Instrument Panel (GP)* - Optional



- Remote engine information display
- Included gauges:
 - Tachometer
 - Coolant temperature
 - Engine oil pressure
 - System voltage
 - Exhaust stack temperature
 - Gear oil pressure (if applicable)
- Mini-display in tachometer displays engine data and fault codes
- Service tool connection port included

* Also compatible with Elite and Elite Plus systems

C Command Elite

Electronic Information System

System Features

- Modular design
- Simplified installation
- Compatible with C Command remote options
- Digital access to all ECM engine data
- Connection for 6 customer inputs (2 temperature, 2 pressure and 2 switch)

Component Features

Customer Interface Box (CIB) - Required



- Central engine-to-vessel interface point
- Same features as C Command CIB
- Plus:
 - Digital microprocessor controller
 - 6.5" TFT color display
 - Menu-driven user interface
 - Ignition/start/stop control
 - Alarm indication and management
 - Local/remote control selection
 - Ethernet/modbus communication to vessel
 - All ECM connections
 - Individual cylinder exhaust temperature display

Remote Control Panel (RP) - Optional



- Remote digital interface to engine control
- Digital microprocessor controlled
- Features:
 - 8.4" TFT color touch-screen display
 - Menu-driven user interface
 - Ethernet communication
 - Self-diagnostic
 - Start/stop control
 - Alarm indication
 - Station transfer control
 - Multiple engine monitoring capability

C Command Elite Plus

Electronic Information System

System Features

- Complies with Marine Classification Society rules
- Compatible with the C Command Elite system
- Remote I/O Module (RIO) included for alarm system sensors
- Shut-Down Unit (SDU) included for safety system sensors
- Alarm and safety system data available at all digital stations

Component Features

Customer Interface Box (CIB) - Required



- Central engine-to-vessel interface point
- Same features as C Command Elite CIB
- Plus:
 - RIO for alarm system sensors
 - SDU for safety system sensors
 - Requires two (2) independent power supplies
 - Compatible with all remote panel options
 - Additional I/O available for Marine Societies not covered by the default system

C Command HD

Electronic Information System

System Features

- Available for use with QSM11 propulsion and auxiliary engines
- Modular design
- Simplified installation
- Durable/proven hardware
- Cost-effective for basic monitoring

Component Features

Engine Room Panel (ERP) - Required



- Local interface for engine controls
- Central engine-to-vessel integration point
- Eliminates randomly located wiring harness connections
- NEMA rated enclosure
- Contains:
 - All necessary ECM connections
 - All communication connections
 - Two fault monitored power inputs available
 - Engine stop button mounted on face of ERP
 - All connections for OEM buttons and lights
 - Button Panel
 - Rotary keyswitch
 - Start/stop buttons
 - Alarm acknowledge button
 - Alarm indication (with buzzer)
 - Local/remote control button
 - Digital display
 - Service tool connection

Control Panel (CP)* - Optional



- Remote interface for engine controls
- Contains:
 - Start/stop buttons
 - Alarm acknowledge button
 - Red alarm indication (with buzzer)
 - Local/remote control indication

* Also compatible with HD Elite Plus system

C Command HD

Electronic Information System

Electronic Digital Display (ED-3)* - Optional



- Remote engine information display
- Displays:
 - Engine parameter information (text and graphics)
 - Engine alarm indication (full text)
 - Data trending
 - Internal buzzer
 - External alarm contact

* Also compatible with HD Elite Plus system

C Command HD Elite Plus

Electronic Information System

System Features

- Available for use with QSM11 propulsion and auxiliary engines
- Complies with Marine Classification Society rules
- Modular design
- Simplified installation
- Compatible with C Command HD remote options
- Digital access to all ECM engine data
- Shut Down Unit (SDU) included for safety system sensors
- Alarm and safety system data available at all digital stations

Component Features

Engine Room Panel (ERP) - Required



- Central engine-to-vessel integration point
- Plus:
 - Digital microprocessor controller
 - 6.5" TFT color display
 - Menu-driven user interface
 - Ignition/start/stop control
 - Alarm indication and management
 - Local/remote control selection
 - Ethernet/modbus communication to vessel
 - All ECM connections
 - SDU for safety system sensors
 - Requires two (2) independent power supplies
 - Additional I/O available for Marine Societies not covered by the default system

Remote Control Panel (RP)* - Optional



- Remote digital interface to engine control
- Digital microprocessor controlled
- Features:
 - 8.4" TFT color touch-screen display
 - Menu-driven user interface
 - Ethernet communication
 - Self diagnostic
 - Start/stop control
 - Alarm indication
 - Station transfer control
 - Multiple engine monitoring capability

CCEC Products

The N855 and K19 CCEC products are derived from the Cummins N855 and K19 engines. These models are manufactured by Chongqing Cummins Engine Company (CCEC). CCEC is certified by China Classification Society (CCS), as well as ISO9001 and ISO16949.

The N855 and K19 CCEC products are suitable for small workboats and fishing vessels that do not require type approval, custom options or complex packaging. These engines are only available as a fixed specification.

Key Engine Features

- Mechanical PT fuel system
- Heat exchanger cooling
- Water cooled exhaust manifold and turbocharger
- Fleetguard branded filters
- IMO emissions certification from CCS

Each CCEC engine carries a full Cummins one year warranty and is sold exclusively through the Cummins distributor network. All parts carry a Cummins part number and are available to order from Regional Parts Distribution Centers.

The CCEC product line is not available for sale in all areas. Contact your local Cummins representative for additional information on pricing, availability, appropriate applications and service.

NT855-M CCEC

Main Propulsion



General Specifications

Configuration	In-line, 6 cylinder, 4-stroke diesel	
Aspiration	Turbocharged	
Displacement	14 L	855 in ³
Bore & Stroke	140 x 152 mm	5.50 x 6.00 in
Fuel System	Pressure Time (PT)	

Commercial Ratings

kW	BHP	RPM	ISO Fuel Cons		Rating	Emissions
			L/hr	Gal/hr		
179	240	1800	N/A	N/A	CON	IMO1
201	270	1800	N/A	N/A	CON	IMO1
224	300	1800	N/A	N/A	CON	IMO1

For more information on average fuel consumption, ratings and emissions, see pages 2-7

Product Dimensions

Length	mm (in)	1809	(71)
Width	mm (in)	881	(35)
Height	mm (in)	1598	(63)
Weight	kg (lb)	1270	(2800)

Dimensions may vary based on selected engine configuration

This product is not available in all areas

Contact your local Cummins professional for more information

NTA855-M CCEC

Main Propulsion



General Specifications

Configuration	In-line, 6 cylinder, 4-stroke diesel	
Aspiration	Turbocharged/Aftercooled	
Displacement	14 L	855 in ³
Bore & Stroke	140 x 152 mm	5.50 x 6.00 in
Fuel System	Pressure Time (PT)	

Commercial Ratings

kW	BHP	RPM	ISO Fuel Cons		Rating	Emissions
			L/hr	Gal/hr		
261	350	1800	N/A	N/A	CON	IMO1
298	400	1800	N/A	N/A	CON	IMO1
336	450	1800	N/A	N/A	CON	IMO1

For more information on average fuel consumption, ratings and emissions, see pages 2-7

Product Dimensions

Length	mm (in)	1809	(71)
Width	mm (in)	881	(35)
Height	mm (in)	1598	(63)
Weight	kg (lb)	1300	(2870)

Dimensions may vary based on selected engine configuration

This product is not available in all areas

Contact your local Cummins professional for more information

KT19-M CCEC

Main Propulsion



General Specifications

Configuration	In-line, 6 cylinder, 4-stroke diesel	
Aspiration	Turbocharged	
Displacement	18.9 L	1150 in ³
Bore & Stroke	159 x 159 mm	6.25 x 6.25 in
Fuel System	Pressure Time (PT)	

Commercial Ratings

kW	BHP	RPM	ISO Fuel Cons		Rating	Emissions
			L/hr	Gal/hr		
317	425	1800	N/A	N/A	CON	IMO1

For more information on average fuel consumption, ratings and emissions, see pages 2-7

Product Dimensions

Length	mm (in)	2162	(85)
Width	mm (in)	965	(38)
Height	mm (in)	1761	(70)
Weight	kg (lb)	2073	(4570)

Dimensions may vary based on selected engine configuration

This product is not available in all areas

Contact your local Cummins professional for more information

KTA19-M CCEC

Main Propulsion



General Specifications

Configuration	In-line, 6 cylinder, 4-stroke diesel	
Aspiration	Turbocharged/Aftercooled	
Displacement	18.9 L	1150 in ³
Bore & Stroke	159 x 159 mm	6.25 x 6.25 in
Fuel System	Pressure Time (PT)	

Commercial Ratings

kW	BHP	RPM	ISO Fuel Cons		Rating	Emissions
			L/hr	Gal/hr		
351	470	1800	N/A	N/A	CON	IMO1
373	500	1800	N/A	N/A	CON	IMO1

For more information on average fuel consumption, ratings and emissions, see pages 2-7

Product Dimensions

Length	mm (in)	2162	(85)
Width	mm (in)	965	(38)
Height	mm (in)	1761	(70)
Weight	kg (lb)	2073	(4570)

Dimensions may vary based on selected engine configuration

This product is not available in all areas

Contact your local Cummins professional for more information

NT855-D(M) CCEC

Marine Auxiliary



General Specifications

Configuration	In-line, 6 cylinder, 4-stroke diesel	
Aspiration	Turbocharged	
Displacement	14 L	855 in ³
Bore & Stroke	140 x 152 mm	5.50 x 6.00 in
Fuel System	Pressure Time (PT)	

Prime Power Ratings

Output Power			Hz	ISO Fuel Cons		Emissions
kW	BHP	kWe*		L/hr	Gal/hr	
180	241	169	50	N/A	N/A	IMO1

* kWe reflects the approximate amount of power available when used in a keel cooled genset configuration

For more information on average fuel consumption, ratings and emissions, see pages 2-7

Product Dimensions

Length	mm (in)	1806	(71)
Width	mm (in)	881	(35)
Height	mm (in)	1598	(63)
Weight	kg (lb)	1270	(2800)

Dimensions may vary based on selected engine configuration

This product is not available in all areas

Contact your local Cummins professional for more information

NTA855-D(M) CCEC

Marine Auxiliary



General Specifications

Configuration	In-line, 6 cylinder, 4-stroke diesel	
Aspiration	Turbocharged/Aftercooled	
Displacement	14 L	855 in ³
Bore & Stroke	140 x 152 mm	5.50 x 6.00 in
Fuel System	Pressure Time (PT)	

Prime Power Ratings

Output Power			Hz	ISO Fuel Cons		Emissions
kW	BHP	kWe*		L/hr	Gal/hr	
240	322	226	50	N/A	N/A	IMO1
284	380	267	50	N/A	N/A	IMO1
287	385	270	60	N/A	N/A	IMO1
313	420	295	60	N/A	N/A	IMO1
317	425	298	50	N/A	N/A	IMO1

* kWe reflects the approximate amount of power available when used in a keel cooled genset configuration

For more information on average fuel consumption, ratings and emissions, see pages 2-7

Product Dimensions

Length	mm (in)	1806	(71)
Width	mm (in)	881	(35)
Height	mm (in)	1598	(63)
Weight	kg (lb)	1300	(2870)

Dimensions may vary based on selected engine configuration

This product is not available in all areas

Contact your local Cummins professional for more information

KTA19-D(M) CCEC

Marine Auxiliary



General Specifications

Configuration	In-line, 6 cylinder, 4-stroke diesel	
Aspiration	Turbocharged/Aftercooled	
Displacement	18.9 L	1150 in ³
Bore & Stroke	159 x 159 mm	6.25 x 6.25 in
Fuel System	Pressure Time (PT)	

Prime Power Ratings

Output Power			Hz	ISO Fuel Cons		Emissions
kW	BHP	kWe*		L/hr	Gal/hr	
336	450	316	50	N/A	N/A	IMO1
392	525	368	60	N/A	N/A	IMO1

* kWe reflects the approximate amount of power available when used in a keel cooled genset configuration

For more information on average fuel consumption, ratings and emissions, see pages 2-7

Product Dimensions

Length	mm (in)	2162	(85)
Width	mm (in)	965	(38)
Height	mm (in)	1761	(70)
Weight	kg (lb)	2073	(4570)

Dimensions may vary based on selected engine configuration

This product is not available in all areas

Contact your local Cummins professional for more information

Other Marine Products

Cummins Filtration designs, manufactures and distributes heavy-duty air, fuel, hydraulic and lube filtration, chemicals and exhaust system technology products for diesel and gas-powered equipment.

Cummins Generator Technologies is the world's broadest range manufacturer of generators 0.6 kVA to nearly 30,000 kVA, covering many important applications for worldwide power requirements including offshore and marine.

Cummins MerCruiser Diesel, a joint venture between Cummins Inc. and Mercury Marine, is the industry's premier "prop to helm" performance source for boaters around the world with diesel marine engines from 76-715 hp for commercial and recreational applications.

Cummins Onan branded products, designed, manufactured and distributed by Cummins Power Generation, are available for recreational vehicle, marine, commercial mobile, residential and portable applications. Onan manufactures marine generator sets between 4-99 kW for military and recreational applications around the world.

For more information on these products, visit marine.cummins.com or contact your local Cummins professional.

Service Resources

Marine Web Site (marine.cummins.com) - Offers product specifications, installation drawings and technical information, as well as answers to frequently asked questions.

QuickServe® Online (quickserve.cummins.com) - Gives easy access to parts and service information for all Cummins engines. Find the information you need with our high-speed search function and your engine's serial number.

Cummins Online Product Registration - Register your Cummins engine quickly and easily at marine.cummins.com to ensure quality parts and service.

Distributor Expertise - The best source for service, parts and application assistance. To find your nearest Cummins distributor, go to the Worldwide Service Locator (click on Service Locator at wsl.cummins.com). If you need assistance beyond what your local Cummins professional has offered, contact the Regional Office for your area or send an e-mail to wave.master@cummins.com.

Global Support Network - Backed by the strength of Cummins distribution network with marine service locations in 160 countries, Cummins engines include a comprehensive, worldwide warranty.

Common Conversions

Length

1 mm	=	0.03937 in
1 m	=	3.28 ft
1 km	=	0.539 nautical mile
1 km	=	0.62 statute mile

Mass

1 g	=	0.035 oz
1 kg	=	2.2 lb
1 metric ton	=	1.1 ton (short)

Torque

1 Nm	=	0.74 lb ft
------	---	------------

Power

1 kW	=	1.36 metric HP
1 kW	=	1.341 BHP
1 BHP	=	1.014 metric HP

Volume

1 L	=	61.02 in ³
-----	---	-----------------------

Temperature

1°C	=	$\frac{°F-32}{1.8}$
-----	---	---------------------

Horsepower/Torque

Torque	=	$\frac{\text{BHP} \times 5252}{\text{RPM}}$
BHP	=	$\frac{\text{Torque} \times \text{RPM}}{5252}$

BFSC

BSFC (g/kWh)	=	$\frac{\text{L/hr} \times 838.9 \text{ g/L}}{\text{kW}}$
BSFC (lb/HPh)	=	$\frac{\text{Gal/hr} \times 7.001 \text{ lb/US Gal}}{\text{HP}}$

Worldwide Offices

Headquarters

Cummins Inc.
4500 Leeds Avenue - Suite 301
Charleston, SC 29405 U.S.A.
wave.master@cummins.com

Americas

4500 Leeds Avenue - Suite 301
Charleston, SC 29405 U.S.A.
Phone: 1-800-DIESELS

China, Hong Kong, Taiwan

Cummins Shanghai Rep. Office
1103 Metro Tower
30 Tian Yao Qiao Road
Shanghai, 200030
China
Phone: 86-21-64268000
Fax: 86-21-64268666

Europe, Middle East, Africa

Royal Oak Way South
Daventry, Northants
NN11 5NU England
Phone: 00800 02866467
Fax: 0870 2413180
cabo.customerassistance@
cummins.com

India

Kothrud, Pune 411029
Phone: 091-20-336680
Fax: 091-20-345916
powermaster@kcl.cummins.com

Korea

25th Floor, ASEM Tower, 159-1
Samsung-dong
Kangnam-ku, Seoul, South Korea
135-798
Phone: 82-2-3452-4313
Fax: 82-2-3452-4113

Latin America

Rua Jati, 310
Cumbica - Guarulhos/SP
CEP 07180-900
Brazil
Phone: 5511 2186-4778
Fax: 5511 2186-4121

South Pacific

2 Caribbean Drive
Scoresby
Victoria 3179
Australia
Phone: 1-800-351-004
sthpac.enquiries@cummins.com

Southeast Asia

8 Tanjong Penjuru
Jurong Industrial Estate
Singapore 609019
Phone: 65-6265-0155
Fax: 65-6266-0432

For more information, please visit:
<http://marine.cummins.com>



Cummins Inc.
4500 Leeds Avenue - Suite 301
Charleston, SC 29405-8539
U.S.A.

Internet: marine.cummins.com
Email: wave.master@cummins.com

Bulletin 3381946 Printed in U.S.A. REV 4/10
©2010 Cummins Inc.