

#### CoCoS Database

An exclusive feature of CoCoS Maintenance, which is unique compared to similar application software, is that it is supplied with comprehensive data about your particular diesel engine plant.

By taking advantage of the extensive database supplied by MAN B&W Diesel, you are saving the time and resources normally needed to correctly input the engine data required by other maintenance software.

#### CoCoS Maintenance and CoCoS-EDS

The CoCoS-EDS program is recommended by MAN B&W Diesel as a valuable support tool, which has been specifically designed for diesel engine surveillance, performance evaluation and to aid fault diagnosis on single and multiple engine plants. Together, the CoCoS-EDS and CoCoS Maintenance programs serve as an ideal partner and diesel engine monitoring system that offers expert assistance in keeping your engine plant in peak operating condition at all times.



**MAN B&W Diesel A/S**  
Teglhøjmsgade 41  
DK-2450 Copenhagen SV  
Denmark  
Telephone: +45 33 85 11 00  
Telefax: +45 33 85 10 30  
E-mail: manbw@manbw.dk  
www.manbw.com

**MAN B&W Diesel A/S**  
**Holeby**  
Østervej 2  
DK-4900 Holeby  
Denmark  
Telephone: +45 54 69 31 00  
Telefax: +45 54 69 30 31  
E-mail: holeby@manbw.dk  
www.manbw.com

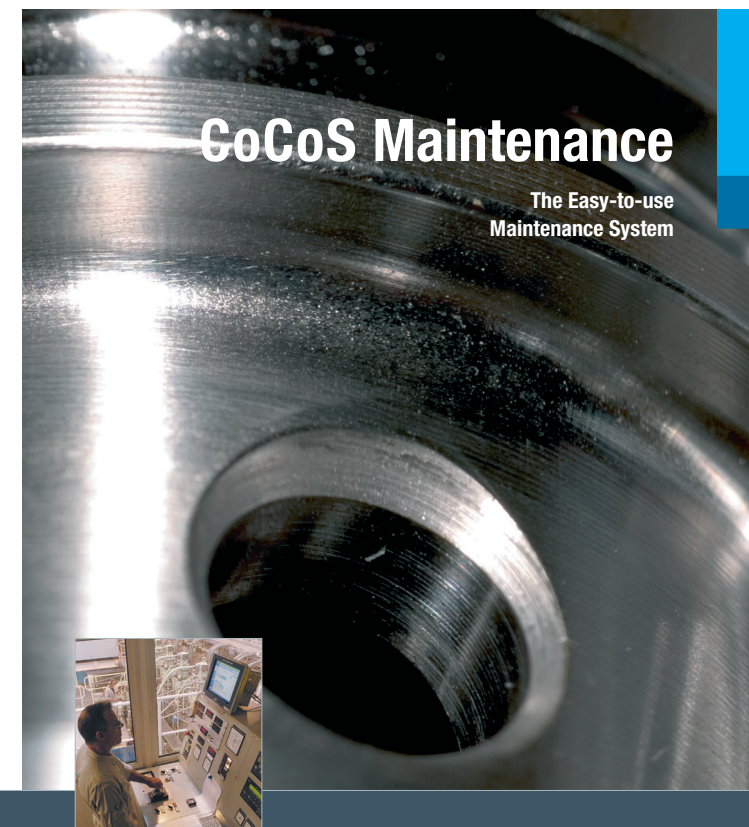
**MAN B&W Diesel A/S**  
**Alpha**  
Niels Juels Vej 15  
DK-9900 Frederikshavn  
Denmark  
Telephone: +45 96 20 41 00  
Telefax: +45 96 20 40 30  
E-mail: alpha@manbw.dk  
www.manbw.com

**MAN B&W Diesel AG**  
**Germany**  
Stadtbachstrasse 1  
D-86224 Augsburg  
Germany  
Telephone: +49 (821) 322-0  
Telefax: +49 (821) 322 3382

**MAN B&W Diesel Ltd**  
Bramhall Moor Lane  
Hazel Grove  
Stockport SK7 5AH  
United Kingdom  
Telephone: +44 (0)161 483 1000  
Telefax: +44 (0)161 487 1465

Copyright © MAN B&W Diesel A/S  
Reproduction permitted provided source is given.  
Subject to modification in the interest of technical progress.  
Reg. No. 39 66 13 14  
908311-D-GB, Sep 04

MAN B&W Diesel — a member of the MAN Group



MAN B&W Diesel



## CoCoS MAINTENANCE

The easy-to-use maintenance system

### Introduction

This user-friendly maintenance management system has been designed to keep you better informed about the condition of the engine, giving you the ability to make better decisions concerning the management of the engine. As all necessary data for your particular engine is included with the CoCoS Maintenance software, the system is available for use immediately.

The information enables you to reduce the costs of operating today's diesel engines by improved planning and optimised maintenance procedures. CoCoS Maintenance is a multiple user system, permitting different users to plan, perform and report on various maintenance tasks.

### CoCoS Maintenance Objectives

- Effectively plan preventive and corrective maintenance work
- Perform condition-based maintenance
- Easy to use
- Create comprehensive work orders
- Report resource allocation and use
- Handle stock control and ordering
- Process documentation as required by classification societies.

### CoCoS Maintenance work areas

#### Maintenance Planning System

Contains a comprehensive list of maintenance programs for all MAN B&W Diesel engines. A set of dedicated tools has been created for extensive planning of engine maintenance. The program forecasts the consumption of spare parts and work hours. A thorough history of maintenance and experience is logged to aid future work.

#### Requisitioning and Purchasing

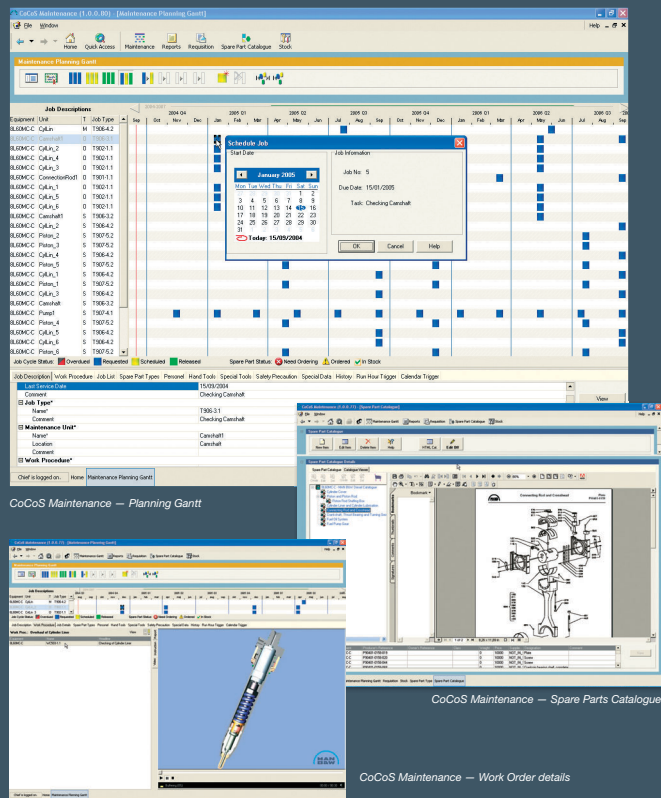
Orders can be made and monitored at any time. The detailed status of each order is always available. Orders can be sent by e-mail, fax or printed out on demand. The orders can be made by accepting the automatically generated proposal from the Maintenance Planning Module report or an edited version of the automatic report can be made.

#### Stock Handling

Savings created by the appropriate administration of spare parts cannot be underestimated. Extensive reports generated mean that you are always in full control of your stock. The automatic generation of ordering proposals saves you valuable time. Orders are easily created and follow-ups quicker.

#### Spare Part Catalogue

Contains multilevel part lists to help with overall planning. The identification of parts is helped by the inclusion of detailed graphics. Each part has accompanying in-depth information. A user-defined minimum stock level results in a proposed order for required spare parts. A search facility is available to get further information. Spare parts can be ordered directly from the catalogue.



### Features

- Easy to use system for multiple users
- It provides web-like, scrollable application areas that facilitate on-site, mouse-click activation of utilities
- Comprehensive graphics interface for the easy interpretation of engine and maintenance data
- Application areas focus on key parameters
- Inbuilt extensive database with information about your particular MAN B&W Diesel engine plant
- Off-line and on-line support from MAN B&W Diesel concerning maintenance instructions, spare part catalogues, spare part ordering, engine hardware, program software and technical support.

