

# AKASAKA 4-STROKE ENGINE

TYPE AX

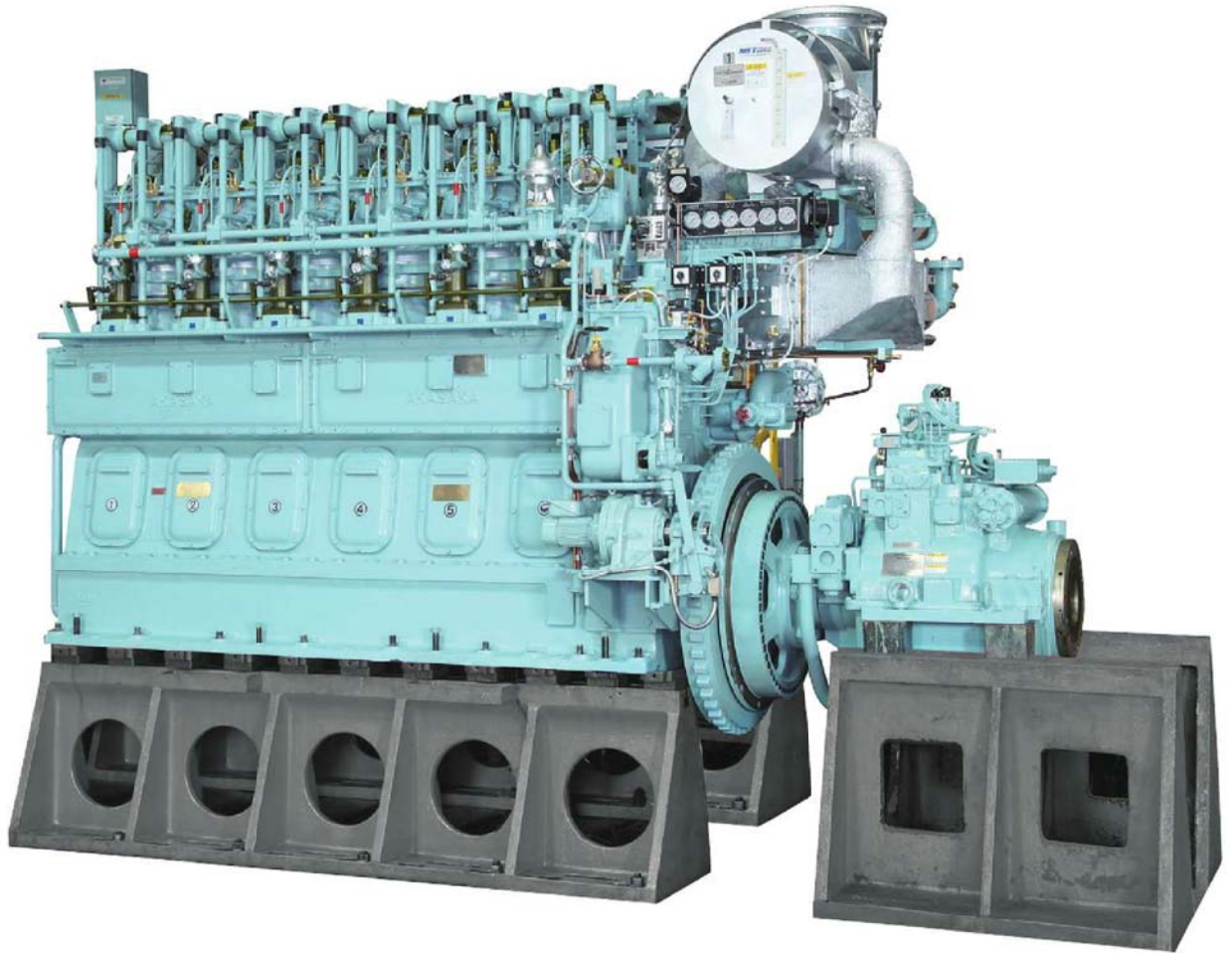
TYPE A

TYPE K

TYPE E

TYPE AH

TYPE U



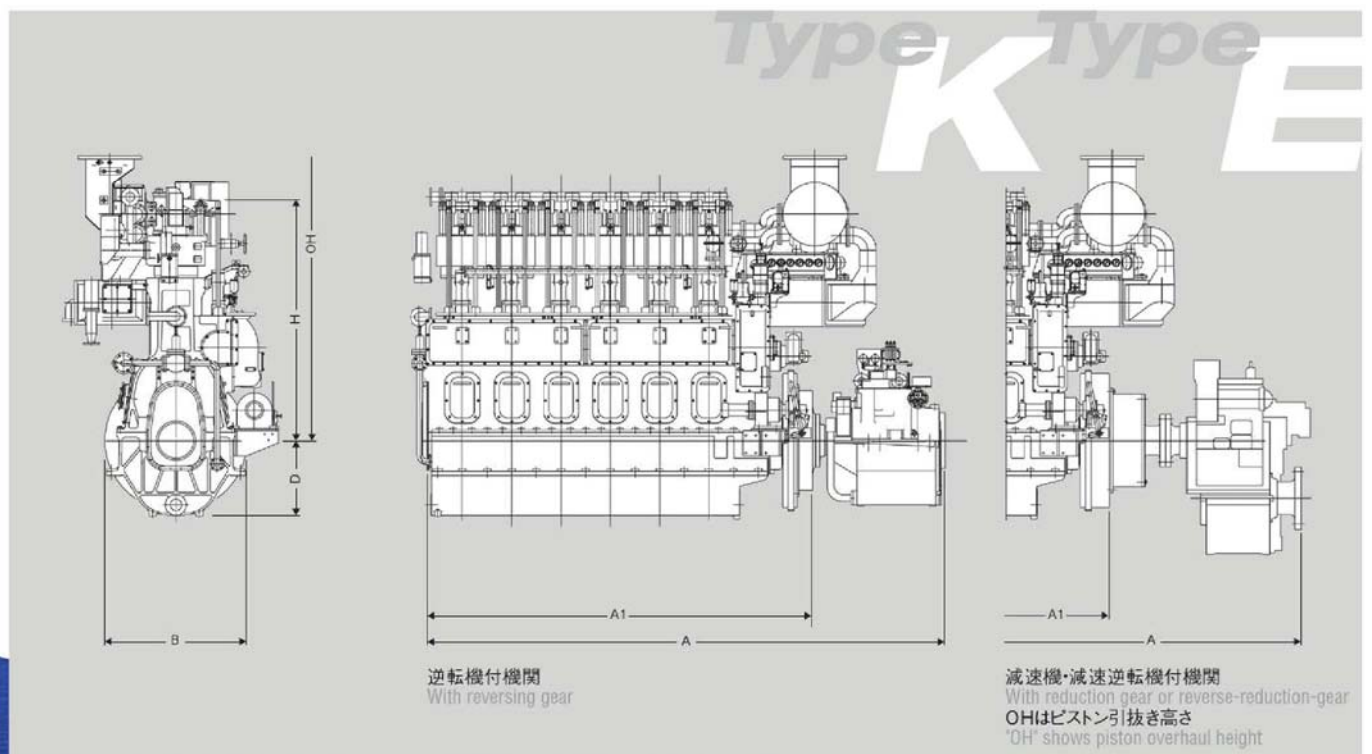
**Type K**  
**Type E**

特徴 Features

アンチポリッシングリング  
Anti Polishing Ring

ボアクーリングシステム  
Bore cooling system

K31FD



## Type K Type E

形式Type	連続最大出力 Max. continuous output kW(PS)	連続最大回転速度 Eng. speed min <sup>-1</sup>	シリンダ径 Bore mm	行程 Stroke mm	仕様 Application	A mm	A1 mm	B mm	D mm	H mm	OH mm	質量 Weight kg
<b>K26S</b>	956 (1,300)	410	260	480	逆転機付 With reversing gear	4,459	3,200	1,150	565	2,050	2,495	16,600
					減速逆転機付 With reverse-reduction gear	4,957	3,200	1,150	565	2,050	2,495	18,700
					減速機付 With reduction gear	5,007	3,200	1,150	565	2,050	2,495	18,100
<b>K26SK</b>	1,029 (1,400)	420	260	480	逆転機付 With reversing gear	4,459	3,200	1,150	565	2,050	2,495	16,600
					減速逆転機付 With reverse-reduction gear	4,957	3,200	1,150	565	2,050	2,495	18,700
					減速機付 With reduction gear	5,007	3,200	1,150	565	2,050	2,495	18,100
<b>K28B</b>	1,029 (1,400)	380	280	480	逆転機付 With reversing gear	4,459	3,200	1,180	640	2,075	2,535	18,100
		減速逆転機付 With reverse-reduction gear			4,957	3,330	1,180	640	2,075	2,535	20,200	
		400			減速機付 With reduction gear	5,007	3,330	1,180	640	2,075	2,535	19,600
<b>K28S</b>	1,176 (1,600)	410	280	500	逆転機付 With reversing gear	4,459	3,200	1,180	640	2,070	2,520	18,600
					減速逆転機付 With reverse-reduction gear	4,987	3,330	1,180	640	2,070	2,520	21,100
					減速機付 With reduction gear	5,037	3,330	1,180	640	2,070	2,520	20,500
<b>K31</b>	1,325 (1,800)	370	310	530	逆転機付 With reversing gear	5,004	3,600	1,300	720	2,266	2,730	24,500
					減速逆転機付 With reverse-reduction gear	5,467	3,600	1,300	720	2,266	2,730	27,100
					減速機付 With reduction gear	5,527	3,600	1,300	720	2,266	2,730	27,000
<b>K31S</b>	1,471 (2,000)	380	310	550	逆転機付 With reversing gear	5,244	3,600	1,300	720	2,266	2,720	26,300
					減速逆転機付 With reverse-reduction gear	5,707	3,600	1,300	720	2,266	2,720	28,100
					減速機付 With reduction gear	5,737	3,600	1,300	720	2,266	2,720	28,100

形式Type	連続最大出力 Max. continuous output kW(PS)	連続最大回転速度 Eng. speed min <sup>-1</sup>	シリンダ径 Bore mm	行程 Stroke mm	仕様 Application	A mm	A1 mm	B mm	D mm	H mm	OH mm	質量 Weight kg
<b>E28B</b>	1,323 (1,800)	420	280	480	逆転機付 With reversing gear	4,880	3,570	1,250	620	2,050	2,385	22,900
		450			減速逆転機付 With reverse-reduction gear	5,227	3,570	1,250	620	2,050	2,385	24,400
		減速機付 With reduction gear			5,227	3,570	1,250	620	2,050	2,385	23,800	
<b>E28BS</b>	1,618 (2,200)	470	280	500	減速逆転機付 With reverse-reduction gear	5,347	3,570	1,250	620	2,150	2,415	26,000
					減速機付 With reduction gear	5,407	3,570	1,250	620	2,150	2,415	25,000

※逆転機付の場合は形式名の最後に“R”が付きます。

“R” will be added at the end of type name for the engines with reversing gear.

※減速機及び減速逆転機付の場合は形式名の最後に“D”または“FD”が付きます。

“D” or “FD” will be added at the end of type name for the engines with reduction gear or reverse/reduction gear.